



**B A I L E Y**

Bailey  
*Caravans*  
1996 RANGE





# Bailey

*Caravans*

1996 RANGE

BEACHCOMBER

DISCOVERY

PAGEANT

SENATOR



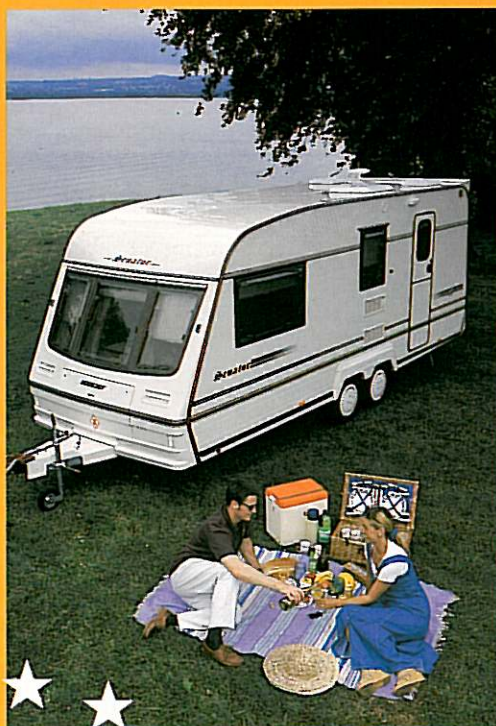
The 1996 season beckons and yet again Bailey have geared up to bring you a range of touring caravans that will provide value, quality, affordability and lasting memorable holidays.

Whether taking weekend breaks, pursuing a sporting hobby or caravanning in the traditional fashion, all Bailey caravans are designed using a wealth of practical and first hand experience. In partnership with our network of approved retailers we have also re-aligned our retail prices for the new season, so the cost to change to a Bailey is as competitive as ever.

Thanks to our flexible production facilities we can normally effect delivery of your caravan, through your local retailer within three to four weeks. Alternatively you may be fortunate to find the Bailey of your choice from stock. Whichever route you take ultimately the supply of Bailey caravans is limited - so don't delay, talk to your local Bailey retailer now.







As ever, the back-up you can expect to receive from your Bailey retailer will be of the very highest order. To improve our 'down the line support' to Bailey owners we have extended our warranty against body de-lamination and water ingress to a full five years from date of purchase. This additional cover is provided within the retail price of the 1996 Bailey product, and as it is factory backed claims can be dealt with speedily and efficiently. In addition to this cover we also offer our normal two year warranty covering the chassis structure and other major components.

Whichever way you look at it no other caravan boasts this level of manufacturer support from new and remember it is provided at no extra charge.

If you need any further advice about your choice of Bailey caravan then talk to your local Bailey retailer who will help to explain why more and more people are turning to Bailey for the answer to their caravanning needs.



# B e a c h c o m b e r

All the qualities and value normally associated with Bailey can be found in each of the four Beachcomber models.

Faithful towing characteristics are standard, whilst the stylish graphics will turn heads wherever you travel.

Internally the uprated upholstery provides comfortable accommodation by both day and night. The high level of equipment which is included in all Beachcombers is carefully chosen to extend the limits of comfort and convenience available to the most ardent of users.

Ample storage is provided by a vast array of facilities, each in itself a superb example of how Bailey designers are able to maximise available space without encroaching on occupant comfort.

Whether you are new to caravanning or simply updating your existing tourer, the Beachcomber range is a superb way to purchase real value for money at a competitive and fair price.

Beachcomber - make a fresh start this year.







## Beachcomber

(Main Picture) Looking forward in the main saloon of the Beachcomber 380/2. All models feature upholstery covered in 'Palm Springs' fabric which comes with matching green lined curtains and scatter cushions.

(Top Left) The spacious end kitchen arrangement of the Beachcomber 380/2.

(Middle Left) The view to aft in the flexible and spacious Beachcomber 470/4.

(Bottom Left) Unrivalled accommodation for five is provided by the Beachcomber 500/5.

(Right) This rear looking view features the evergreen Beachcomber 440/4 - note the generous kitchen facilities.

(Far Right) All models in the Beachcomber range feature fully equipped washrooms, this one shown here is in the Beachcomber 470/4.





# D i s c o v e r y

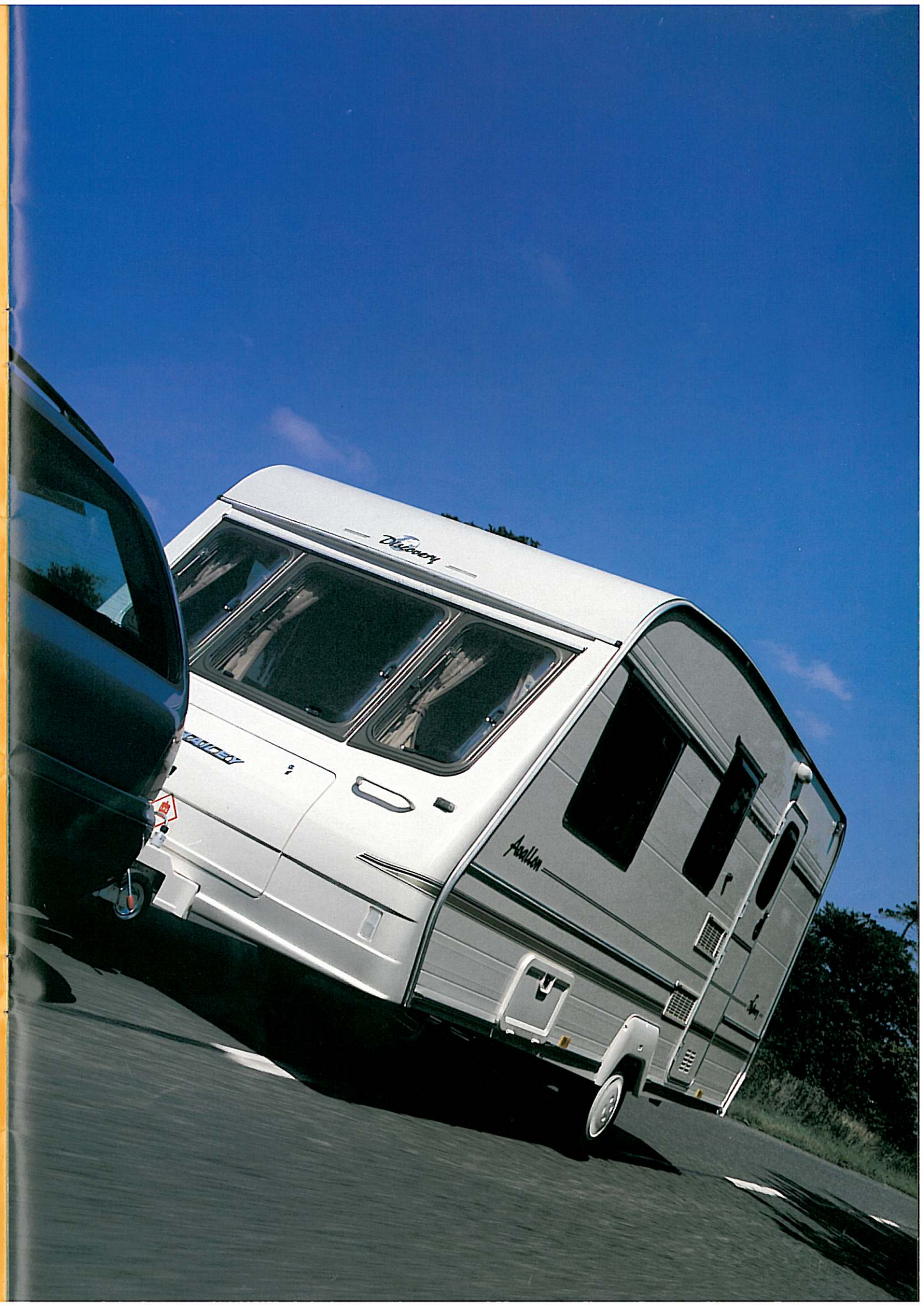
A desirable commodity by any measure, the new Discovery range for the 1996 season has been designed to offer its occupants comfort, convenience and enjoyable caravanning throughout the year.

With pleasing and distinctive styling each of the new models is guaranteed to attract admiring looks wherever your travels take you. But beauty is only skin deep and Discovery delivers in other areas as well, especially those that really matter.

As with all Bailey products the fully insulated Discovery bodyshell gives unrivalled strength and rigidity the result of which is outstanding durability, thus you have the re-assurance that your investment will continue to perform throughout your ownership.

Inside, Discovery is bristling with an array of standard equipment selected to match your expectations and to ensure the maximum benefit from the space available. Certain layouts in the range can now be specified at time of ordering with a choice of rear washroom layouts. Additionally it is now possible to purchase an additional set of curtains and scatter cushions in an alternative colour to the standard.

This flexibility is representative of the way in which Discovery has been evolved to offer a perfect blend of performance and practicality. For the new season Discovery is the perfect reason to change.







## Discovery

(Main Picture) The main saloon of the Discovery Manta in 'New World' velour upholstery. The pink curtains and scatter cushions shown here are available at an additional cost (see retail price list for details).

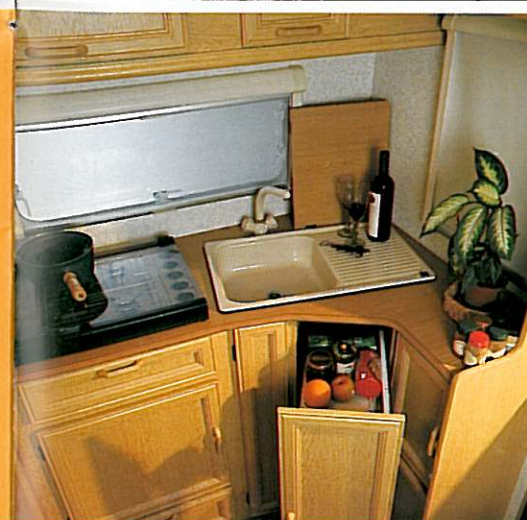
(Top Left) A practical dresser unit adorns the Discovery Manta shown here with optional pink curtains.

(Above) The view aft of the Discovery Avallon, shown here in optional pink curtains, which features our convertible rear dressing room. Details of the layout options available can be found in the information section at the rear of this brochure.

(Right) The new 'friendly' kitchen of the Discovery Maru which features space saving design with generous storage facilities.

(Middle Right) A rear looking view of the larger Discovery Bordeaux shown here with a separate shower, rear washroom. The picture also shows the standard curtain and scatter cushions in green velour.

(Far Right) Another view of the Discovery Manta with convertible rear dressing room. The pink curtain material and scatter cushions shown are available at extra cost.





# Pageant

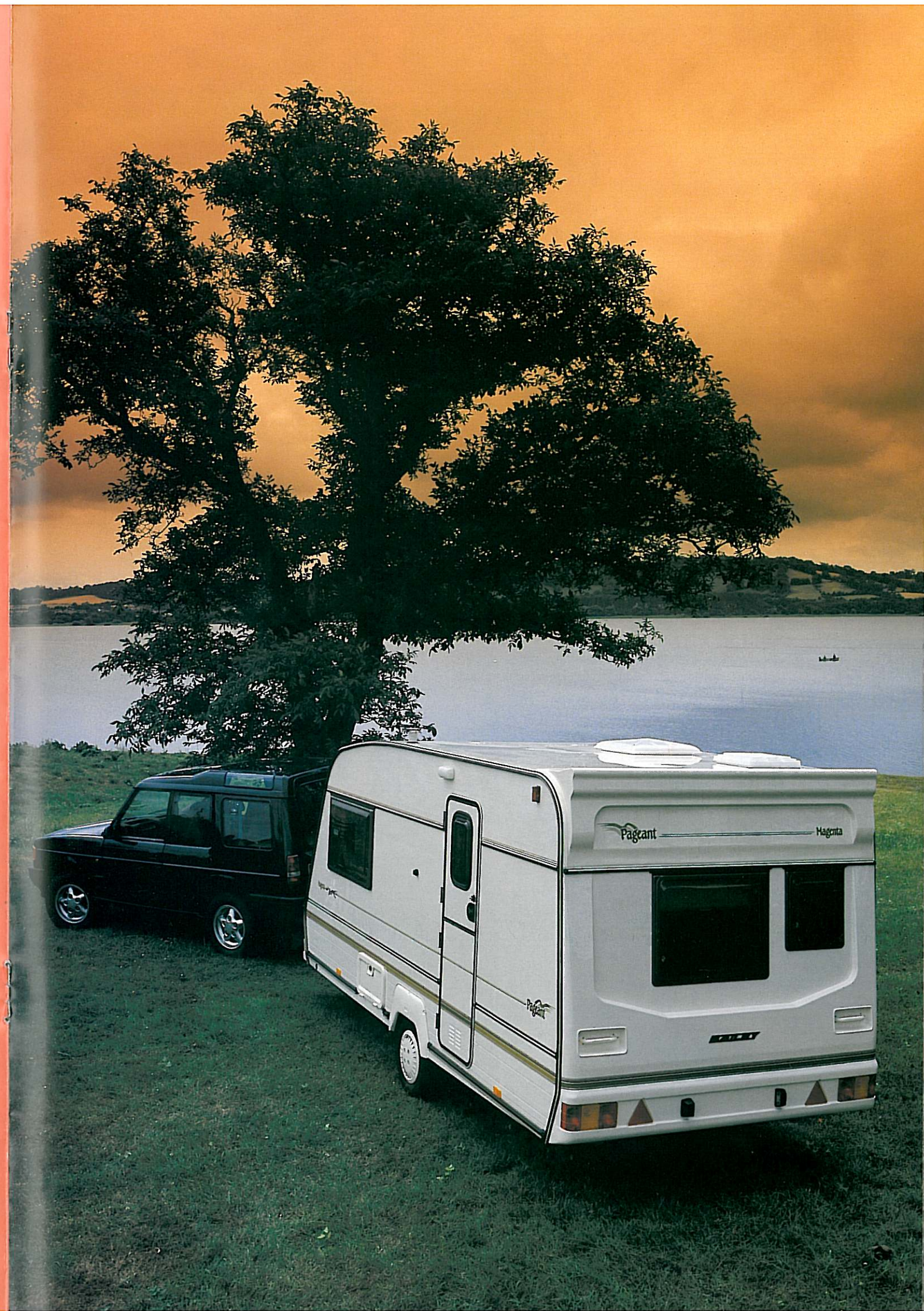
Probably the most highly respected range of club class caravans ever produced, Pageant continues to provide high quality, reliable solutions to the requirements of the most committed caravanners.

In line with the policy of keeping Pageant ahead of the field, we have given this evergreen award winning range a whole new look for the latest season. A fresh new front panel with recessed grab handles is balanced by the aesthetic appeal of the roof mounted rear spoiler. Pageant also has the finest of road manners and exceptional towing characteristics.

However, this is but one half of the Pageant success story. Inside the range the designers at Bailey have been given a free hand to create interiors with comprehensive specifications and the highest levels of comfort. Sprung upholstery, thicker than ever, pleasing matching fabrics and rich wood lustres make living in a Pageant a real delight. A sensible range of layouts feature models that benefit from a choice of front saloon options and another Bailey first, most rear washrooms can be specified with your choice of showering arrangements.

Offering the consumer the ability to choose is what Pageant has done so well for more than a decade - no wonder then that hundreds of satisfied Pageant owners come back year after year.

Pageant - the undisputed club class champion.





## Pageant

(Main Picture) Shown here in standard 'Palace' upholstery and pink curtains and scatter cushions, this is the spacious front lounge in the Pageant Majestic.

(Top Left) The re-designed kitchen unit of the new Pageant Moselle shown with optional 'Mia' fabric and matching curtains/scatter cushions.

(Middle Left) The Pageant Auvergne offers family accommodation for five. This rear view shows the sliding doors which partition the back dinette.

(Bottom Left) A close up view of the Pageant Moselle in optional 'Mia' upholstery - note the new integral kitchen equipment.

(Right) Both Pageant Cabriolet and Pageant Majestic feature this stylish, 'friendly' kitchen unit.

(Far Right) The Pageant Magenta with convertible rear dressing room is shown here in the standard 'Palace' upholstery, but with the optional green velour curtains and scatter cushions.





# Senator

The simplest way to express your achievements in life, the new four model Senator range represents the ultimate choice of twin-axled endurance tourers.

Each Senator possesses exemplary road manners and towing characteristics making trans-continental holidaying a reality, not just a distant dream and to back up this unique ability is a level of interior comfort, equipment and accommodation the equal of any five star establishment.

Link this unashamed opulence to the highest degrees of practicality displayed within each Senator and it becomes obvious why so many aspire to own one of these sought after and very special vehicles.

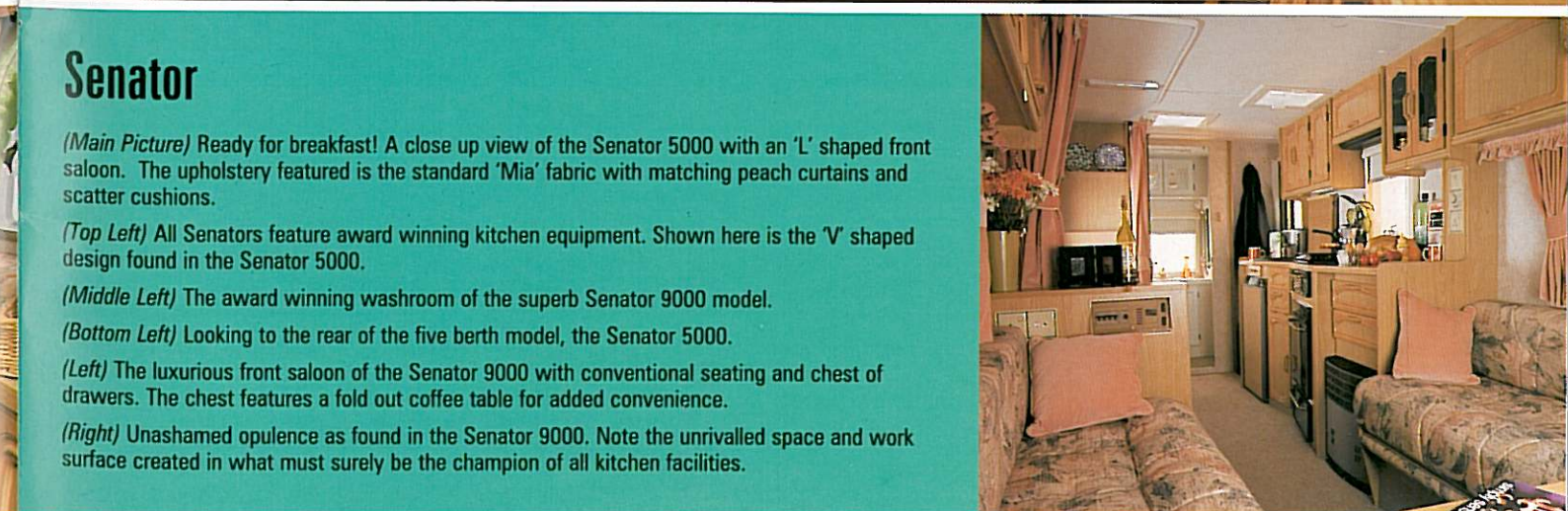
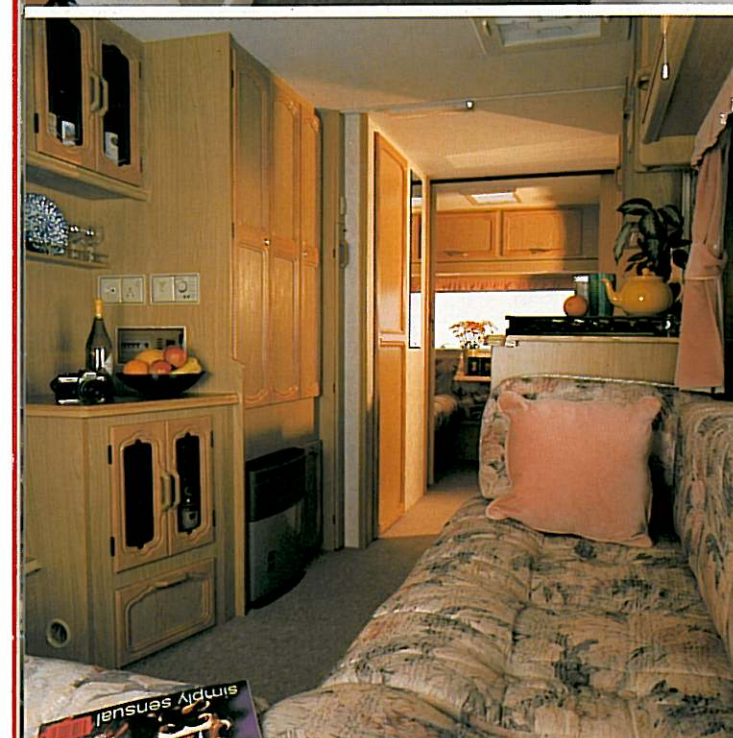
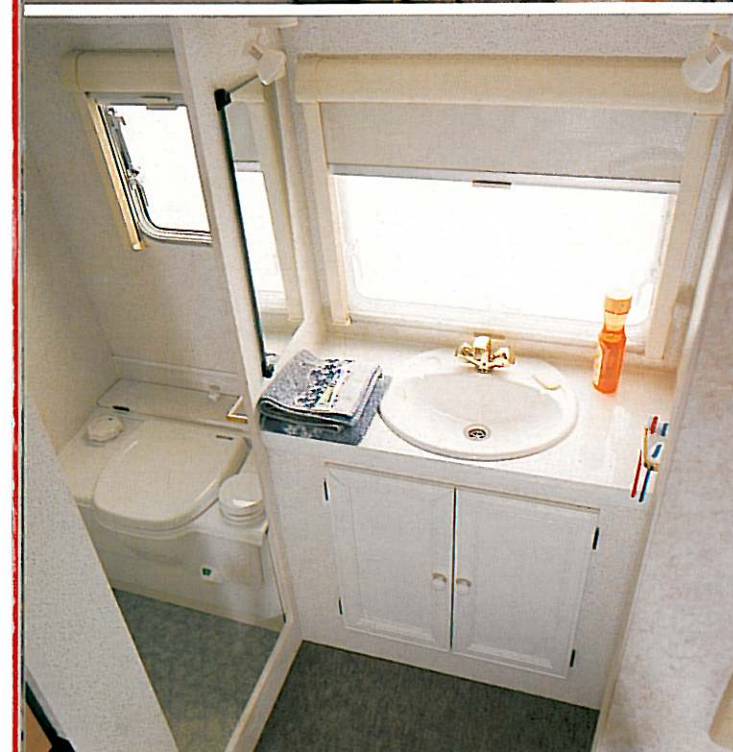
Because of our policy of carefully limiting the numbers available each year, Senator owners will enjoy a high level of exclusivity as well as rejoicing in the knowledge that retained values of used Senators are amongst the best. This makes the investment even more worthwhile, a fact borne out by the high percentage of owners who are repeat purchasers.

The cherished Senator range offers a choice of four different multi-berth layouts providing ample living accommodation for between two and five persons. As you would expect, the standard equipment listing is very comprehensive, allowing you to enjoy the finer things in life whilst making full use of your valuable leisure time.

If you are interested in the best, then Senator should go to the top of your list - the ultimate caravan for techno-crafted excellence.







## Senator

(Main Picture) Ready for breakfast! A close up view of the Senator 5000 with an 'L' shaped front saloon. The upholstery featured is the standard 'Mia' fabric with matching peach curtains and scatter cushions.

(Top Left) All Senators feature award winning kitchen equipment. Shown here is the 'V' shaped design found in the Senator 5000.

(Middle Left) The award winning washroom of the superb Senator 9000 model.

(Bottom Left) Looking to the rear of the five berth model, the Senator 5000.

(Left) The luxurious front saloon of the Senator 9000 with conventional seating and chest of drawers. The chest features a fold out coffee table for added convenience.

(Right) Unashamed opulence as found in the Senator 9000. Note the unrivalled space and work surface created in what must surely be the champion of all kitchen facilities.



## RAVANS RANGE

### SPECIFICATIONS

The equipment listed on page one of the specification pages. The interior soft furnishings are in green velour. A whole range of optional extras can be specified, details of which are given on the accompanying retail price list. For further information please consult your local Bailey retailer.

#### About Discovery...

Discovery models feature an extremely comprehensive specification, details of which are given on pages two and three. All Discovery models now have interior sprung base and backrest seat cushions. This does not apply to cushions used for bunk make up or those in the rear dinette of the Limousin model. Cushions are covered in 'New World' velour fabric. To complement this, lined curtains and pelmets are finished in a green velour fabric. If you so wish, it is possible to purchase an additional set of lined curtains and pelmet covers in a complementing pink colour, thus giving you a choice of interior colour schemes. Pricing details can be found on our retail price listing.

**Discovery SE Pack...** Should you wish to increase the specification of your chosen model then you may opt for the Special Equipment (SE) pack. This consists of a glass fronted oven, Carver Fanmaster 'blown air' heating, 2 x mains lights, Status TV aerial and booster and 'SE' badging. Price details of this pack and other optional extras can be found on our retail price list.

#### About Pageant...

To offer even greater flexibility the new Pageant range features a choice of layout options, see pages four and five. With the exception of the Moselle all Pageants can be ordered at no extra cost with the choice of either a conventional front dinette, or an 'L' shaped saloon. In the rear washroom models Magenta and Champagne, a choice between a washroom with separate shower compartment or the convertible rear dressing room arrangement can be specified at time of ordering. Again this is a no cost option.

The interior soft furnishings in Pageant models feature 'Palace' velour interior sprung upholstery with complementing pink velour lined curtains and pelmets. For an extra charge additional matching green velour lined curtains, pelmet covers and scatter cushions can be ordered. Also available at extra cost is the choice of interior sprung upholstery covered in the 'Mia' fabric. This scheme is only available with matching peach lined curtains and pelmet covers. Full details of the optional extras available on all Pageant models can be found on the accompanying retail price list.

#### About Senator...

As you would expect from this Champion of Champions, the list of standard equipment leaves very little need to consider optional extras, see page six. In the 4000, 5000 and 9000 models it is possible to order the choice of either a conventional front dinette or an 'L' shaped saloon at no additional cost. We normally require at least 25 working days to satisfy this requirement although we always endeavour to do better than this.

Other optional extras are detailed on our retail price list which accompanys this brochure. The interior soft furnishing scheme features interior sprung upholstery covered in 'Mia' fabric with matching peach lined curtains and pelmet covers. At no additional cost interior sprung upholstery covered in 'Palace' velour fabric with matching pink lined curtains and pelmet covers can be specified. With all colour schemes, two scatter cushions finished in the matching curtain material are supplied.

#### EXTERIOR FEATURES

- Al-Ko, galvanised steel, one piece chassis with "Euro-Axle"
- Overrun braking system with auto reversing mechanism
- Steel wheel rims, with full bead retention and bolt on wheel trim
- Front one piece panel in G.R.P.
- Rear full height panel in acrylic capped A.B.S.
- Wrap around rear light cluster
- Gas bottle box with removable lid, featuring storage facility for 2 x gas cylinders and spare wheel/tyre
- NEW Full Beachcomber graphics
- One key operation for all exterior locks
- Battery box with mains electrics input, battery terminals and restraint strap

#### STRUCTURAL SPECIFICATION

- 44mm bonded floor with U.H.D. polystyrene insulation core
- 31mm bonded ceiling with H.D. polystyrene insulation core
- 29mm bonded sidewalls with H.D. polystyrene insulation core
- Full width double glazed acrylic windows (all opening except fixed door window)

#### SOFT FURNISHINGS

- NEW Sumptuous 'Palm Springs' velour upholstery with scatter cushions
- NEW Generous lined curtains
- Curtain pelmets finished in curtain material
- Front shelf padded pelmet finished in curtain material
- NEW Deep pile carpet

#### ELECTRICAL SYSTEM

- Comprehensive 240 volt, mains electric system, with R.C.C.B. protection
- 2 x 240 volt mains sockets
- 20 metre mains connection lead
- Battery charger (fully protected) with full 7 amps output
- 12 volt fused electrical system with control panel (with battery condition meter)
- 12 volt fluorescent light fittings

#### KITCHEN EQUIPMENT

- NEW Domestic style taps
- Combined sink and drainer in vitreous enamel (beige finish)
- NEW 3 burner hob and grill, with flame failure device finished in beige vitreous enamel
- Fold up worktops with finished edges
- NEW Cutlery storage tray
- Crockery storage provision
- Provision for fitting of optional oven
- Electrolux RM 4206 fridge (60 litre) with three way operation (240v, 12v and gas) and crystal ignition

#### WATER SYSTEM

- NEW Fully pressurised system with Carver Crystal filtered inlet, submersible pump, in line pressure switch and surge damper
- NEW Carver Cascade GE Plus water heater (gas and 240v operation)
- Hot and cold mixer taps
- Fully inboard plumbing
- Convuluted waste hose system routed to underfloor socket(s) at rear of caravan
- Large waste outlets in kitchen and washroom

#### WASHROOM FEATURES

- Moulded shower tray
- Full shower fittings
- Vanity unit
- Manual flush Thetford cassette toilet
- Shower curtain
- Hot and cold mixer tap
- 4 way rooflight with flyscreen
- NEW Towel rail
- NEW Toilet roll holder

#### HEATING EQUIPMENT

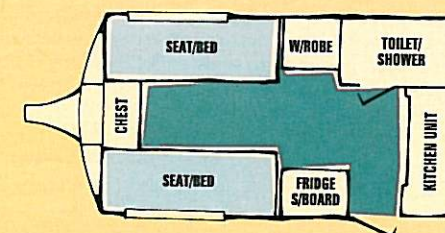
- Carver 1800 space heater
- Optional blown air kit available

#### GENERAL FEATURES

- NEW Additional shelving in larger overhead lockers
- 4 way rooflight with flyscreen in main saloon
- NEW Fitted doorwell mat
- NEW Flyscreen/blind to kitchen window
- NEW Cassette style blind to door window
- Chest of drawers on 6' front saloons
- Pull out slats on main double bed make ups
- NEW Framed furniture doors
- Restraint catches on key storage facilities for safety whilst towing
- Slatted bed box tops

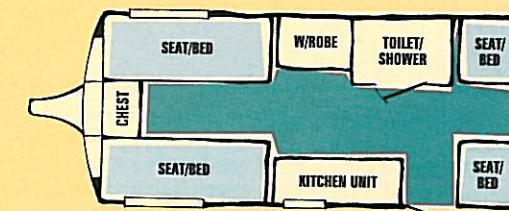
### 380/2

The new 380/2, whilst being the 'baby' of the Bailey Range offers generous accommodation and storage in a conventional end kitchen two berth layout.



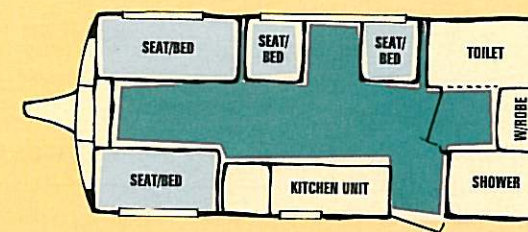
### 440/4

This is the original '2 plus 2' layout, with the choice of two single, or one double bed in the front saloon and to the rear is a single dinette which converts to provide two single bunks for sleeping accommodation.



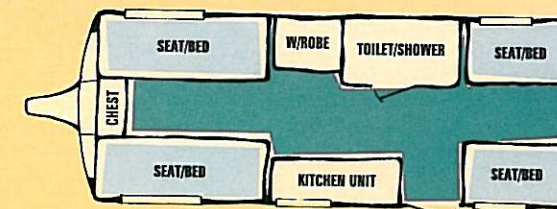
### 470/4

Not only does this ingenious layout provide generous kitchen facilities and a rear washroom with separate shower, but there is also four berth accommodation with a double bed and two single bunks.



### 500/5

Another classic layout. Family accommodation for five with two saloons (one at either end of the caravan). Each converts to provide a double bed although the larger front lounge also has the option of two single beds. A drop down bunk makes the fifth berth above the rear dinette.



#### 2 BERTH

Internal Body Length	3.759m	12'4"
Shipping Length	5.249m	17'3"
Overall Width	2.19m	7'2"
Maximum Headroom	1.90m	6'3"
Overall Height	2.54m	8'4"
Ex Works Weight $\pm 3\%$	685kg	13.5cwt
Caravan Allowable Payload	194kg	3.8cwt
Maximum Auth. Weight	900kg	17.7cwt

#### 4 BERTH

Internal Body Length	4.435m	14'7"
Shipping Length	5.925m	19'5"
Overall Width	2.19m	7'2"
Maximum Headroom	1.90m	6'3"
Overall Height	2.54m	8'4"
Ex Works Weight $\pm 3\%$	780kg	15.3cwt
Caravan Allowable Payload	197kg	3.9cwt
Maximum Auth. Weight	1000kg	19.7cwt

#### 4 BERTH

Internal Body Length	4.731m	15'6"
Shipping Length	6.221m	20'5"
Overall Width	2.19m	7'2"
Maximum Headroom	1.90m	6'3"
Overall Height	2.54m	8'4"
Ex Works Weight $\pm 3\%$	814kg	16.0cwt
Caravan Allowable Payload	219kg	4.3cwt
Maximum Auth. Weight	1057kg	20.8cwt

#### 5 BERTH

Internal Body Length	5.032m	16'6"
Shipping Length	6.522m	21'5"
Overall Width	2.19m	7'2"
Maximum Headroom	1.90m	6'3"
Overall Height	2.54m	8'4"
Ex Works Weight $\pm 3\%$	840kg	16.5cwt
Caravan Allowable Payload	223kg	4.4cwt
Maximum Auth. Weight	1088kg	21.4cwt

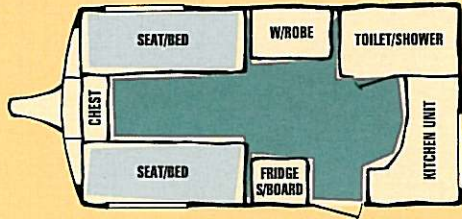


MARU

This two berth caravan has a quite stunning 'L' shaped rear kitchen which makes maximum use of space available. The front saloon converts to offer either two single beds, or one large double.

2 BERTH

Internal Body Length	4.115m	13'6"
Shipping Length	5.605m	18.5"
Overall Width	2.19m	7'2"
Maximum Headroom	1.90m	6'3"
Overall Height	2.54m	8'4"
Ex Works Weight ±3%	780kg	15.3cwt
Caravan Allowable Payload	197kg	3.9cwt
Maximum Auth. Weight	1000kg	19.7cwt



EXTERIOR FEATURES

- Al-Ko, galvanised steel, one piece chassis with "Euro-Axle"
- Overrun braking system with auto reversing mechanism
- Steel wheel rims, with full bead retention and bolt on wheel trim
- Front one piece panel in G.R.P.
- Rear full height panel in acrylic capped A.B.S.
- Wrap around rear light cluster
- Gas bottle box with removable lid, featuring storage facility for 2 x gas cylinders and spare wheel/tyre
- NEW Full Discovery graphics
- One key operation for all exterior locks
- Battery box with mains electrics input, battery terminals and restraint strap
- Awning light

STRUCTURAL SPECIFICATION

- 44mm bonded floor with U.H.D. polystyrene insulation core
- 31mm bonded ceiling with H.D. polystyrene insulation core
- 29mm bonded sidewalls with H.D. polystyrene insulation core
- Full width double glazed acrylic windows (all opening except fixed door window)

SOFT FURNISHINGS

- NEW Sumptuous interior sprung 'New World' velour upholstery with bolster cushions
- NEW Generous curtains
- Curtain pelmets finished in curtain material
- NEW Deep pile carpet
- NEW Alternative choice of curtain material at extra cost

ELECTRICAL SYSTEM

- Comprehensive 240 volt, mains electric system, with R.C.C.B. protection
- 2 x 240 volt mains sockets
- 20 metre mains connection lead
- Battery charger (fully protected) with full 7 amps output
- 12 volt fused electrical system with control panel (with battery condition meter)
- 12 volt fluorescent light fittings
- 12 volt "eyeball" reading lights
- 12 volt plug and socket

KITCHEN EQUIPMENT

- Combined sink and drainer in vitreous enamel (beige finish)
- NEW 4 burner hob and grill, with flame failure device finished in beige vitreous enamel
- Fold up worktops with finished edges
- NEW Cutlery storage tray
- Crockery storage provision
- Provision for fitting of optional oven
- NEW Electrolux RM 4236 fridge (70 litre) with three way operation (240v, 12v and gas) and crystal ignition

WATER SYSTEM

- NEW Domestic style taps
- Fully pressurised system with Carver Crystal filtered inlet and submersible pump, in line pressure switch and surge damper
- NEW Carver Cascade GE Plus water heater (gas and 240v operation)
- Hot and cold mixer taps
- Fully inboard plumbing
- Convoluted waste hose system routed to underfloor socket(s) at rear of caravan
- Large size waste outlets

WASHROOM FEATURES

- Moulded shower tray
- Full shower fittings
- Vanity unit
- Manual flush Thetford cassette toilet
- Shower curtain
- Hot and cold mixer tap
- Towel rail
- Toilet roll holder
- 4 way rooflight with flyscreen

HEATING EQUIPMENT

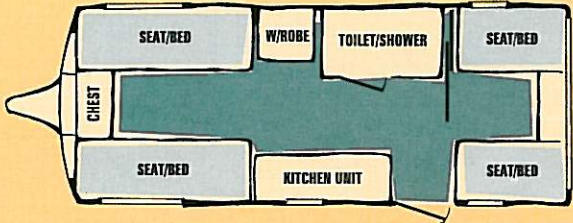
- Carver 1800 space heater
- NEW Carver 3000 space heater in Limousin and Bordeaux
- Optional blown air kit available

GENERAL FEATURES

- NEW Additional shelving in larger o/head lockers
- 4 way rooflight with flyscreen in main saloon
- Chest of drawers on 6' front saloons
- Pull out slats on main double bed make ups
- NEW Framed furniture doors
- Restraint catches on key storage facilities for safety whilst towing
- NEW Blinds/flyscreens fitted to all principal windows
- NEW Fitted clock
- NEW Drop down flaps on large bed box fronts
- Slatted tops to all bed boxes
- Dedicated table stowage facility
- Free standing table
- NEW Fitted doorwell mat

LIMOUSIN

Sliding doors enable the rear dinette to be partitioned off as a separate bedroom with room for three (double bed with single bunk above). To the front of the caravan a king size double can be made up, or the choice of two single beds can be yours.

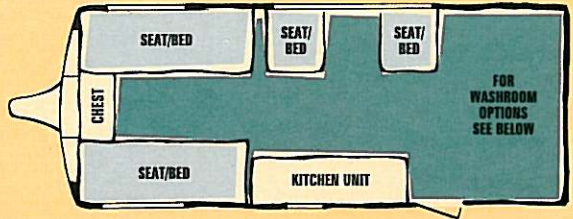


5 BERTH

Internal Body Length	5.159m	16'11"
Shipping Length	6.649m	21'10"
Overall Width	2.19m	7'2"
Maximum Headroom	1.90m	6'3"
Overall Height	2.54m	8'4"
Ex Works Weight ±3%	922kg	18.1cwt
Caravan Allowable Payload	238kg	4.7cwt
Maximum Auth. Weight	1188kg	23.4cwt

BORDEAUX

A large four berth end washroom model which offers flexible and appealing accommodation. As with other Discovery models the end washroom can be ordered in one of two layouts. The large dinette provides either single or double beds and a side dinette converts into two single bunks.

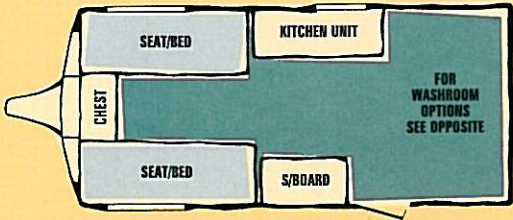


4 BERTH

Internal Body Length	5.159m	16'11"
Shipping Length	6.649m	21'10"
Overall Width	2.19m	7'2"
Maximum Headroom	1.90m	6'3"
Overall Height	2.54m	8'4"
Ex Works Weight ±3%	900kg	17.7cwt
Caravan Allowable Payload	234kg	4.6cwt
Maximum Auth. Weight	1161kg	22.8cwt

MANTA

Conventional two berth accommodation to the fore, this model can be specified with a choice of rear washroom layouts. Our convertible rear dressing room offers see through vision whilst towing but quickly converts to a sealed room, whilst the alternative 'separate shower' arrangement is ideal for providing a real 'go anywhere' ability for the rallying enthusiast.

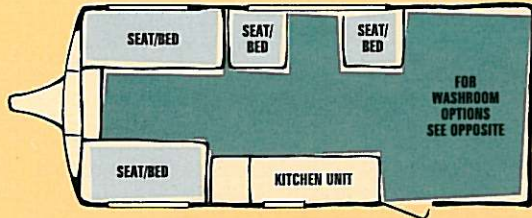


2 BERTH

Internal Body Length	4.547m	14'11"
Shipping Length	6.037m	19'10"
Overall Width	2.19m	7'2"
Maximum Headroom	1.90m	6'3"
Overall Height	2.54m	8'4"
Ex Works Weight ±3%	819kg	16.1cwt
Caravan Allowable Payload	219kg	4.3cwt
Maximum Auth. Weight	1063kg	20.9cwt

AVALLON

As with the 'Manta', this four berth caravan can be ordered with your choice of rear washroom layout. The sleeping accommodation consists of a large double bed at the front of the caravan with a side dinette converting into two single bunks.



4 BERTH

Internal Body Length	4.731m	15'6"
Shipping Length	6.221m	20'5"
Overall Width	2.19m	7'2"
Maximum Headroom	1.90m	6'3"
Overall Height	2.54m	8'4"
Ex Works Weight ±3%	853kg	16.8cwt
Caravan Allowable Payload	221kg	4.3cwt
Maximum Auth. Weight	1100kg	21.6cwt



'S' Washroom



'V' Washroom

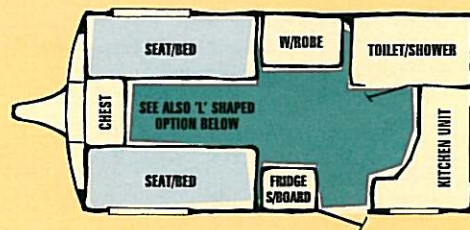
Rear end washroom options for the Manta, Avallon and Bordeaux

Discovery Layout Options



## MAJESTIC

A stylish new kitchen to the rear of the caravan, and now this popular model comes with a choice of front saloon layouts, either the fashionable 'L' shaped arrangement or the traditional lounge seating with central chest of drawers.



### EXTERIOR FEATURES

■ Al-Ko, galvanised steel, one piece chassis with "Euro-Axle" and long 'A' frame ■ Overrun braking system with auto reversing mechanism ■ Steel wheel rims, with full bead retention and bolt on wheel trim ■ **NEW** Front one piece panel in G.R.P. ■ Rear full height panel in acrylic capped A.B.S. ■ **NEW** Rear roof mounted spoiler ■ Wrap around rear light cluster ■ **NEW** Gas bottle box with swing up lid, featuring storage facility for 2 x gas cylinders and spare wheel/tyre ■ **NEW** Full Pageant graphics ■ One key operation for all exterior locks ■ Battery box with mains electric input, battery terminals and restraint strap ■ Awning light ■ Full length rubbing strakes

### STRUCTURAL SPECIFICATION

■ 44mm bonded floor with "styrofoam" insulation core ■ 31mm bonded ceiling with H.D. polystyrene insulation core ■ 29mm bonded sidewalls with H.D. polystyrene insulation core ■ Full width double glazed acrylic windows (all opening except fixed door window)

### SOFT FURNISHINGS

■ **NEW** Sumptuous velour interior sprung 'Palace' upholstery ■ **NEW** Optional 'Mia' interior sprung upholstery ■ **NEW** Generous curtains ■ Curtain pelmets finished in curtain material ■ **NEW** Deep pile carpet ■ **NEW** Alternative choice of curtain material at extra cost

### ELECTRICAL SYSTEM

■ **NEW** Comprehensive 240 volt, mains electric system, with R.C.C.B. protection ■ 3 x 240 volt mains sockets ■ **NEW** Mains lights in front saloon ■ 20 metre mains connection lead ■ Battery charger (fully protected) with full 10 amps output ■ **NEW** 12 volt fused electrical system with control panel (with battery condition meter) ■ 12 volt fluorescent light fittings ■ 12 volt "eyeball" reading lights ■ 12 volt plug and socket ■ **NEW** Independent courtesy switches for saloon lighting and washroom lighting

### KITCHEN EQUIPMENT

■ **NEW** Domestic style taps ■ Combined sink and drainer in vitreous enamel (brown finish) ■ **NEW** Fitted Stoves Vanette oven ■ **NEW** 4 burner hob and grill (with flame failure device) and saucepan storage facility ■ **NEW** Fold up worktops with finished edges ■ **NEW** Cutlery storage tray ■ Crockery storage provision ■ Electrolux RM 4237 fridge (70 litre) with three way operation (240v, 12v and gas) and electronic ignition

### WATER SYSTEM

■ **NEW** Carver 'Mainsline' water connector ■ Fully pressurised system with Carver Crystal filtered inlet and submersible pump, in line pressure switch and surge damper ■ **NEW** Carver Cascade GE Plus water heater (gas and 240v operation) ■ Hot and cold mixer taps ■ Fully inboard plumbing ■ Convulsed waste hose system routed to underfloor socket(s) at rear of caravan ■ Large size waste outlets

### WASHROOM FEATURES

■ Moulded shower tray ■ Full shower compartment fittings ■ Vanity unit with undersink storage cabinet ■ Electric flush Thetford cassette toilet ■ **NEW** Shower curtain (glazed shower door in certain models) ■ Hot and cold mixer tap ■ Towel rail ■ Toilet roll holder ■ 4 way rooflight with flyscreen

### HEATING EQUIPMENT

■ Carver 3000 space heater ■ **NEW** Carver "Fanmaster" mains 2kw. heater ■ Ducted blown air central heating

### GENERAL FEATURES

■ **NEW** Additional shelving in larger o/head lockers ■ 4 way rooflight with flyscreen in main saloon ■ **NEW** Deluxe chest of drawers on 6' front saloons with fold out table ■ Pull out slats on main double bed make ups ■ Restraint catches on key storage facilities for safety whilst towing ■ **NEW** Blinds/ flyscreens fitted to all principal windows ■ Cassette blind to door window ■ **NEW** Fitted clock ■ **NEW** Drop down flaps on large bed box fronts ■ Slatted tops to all bed boxes ■ Dedicated table stowage facility ■ Free standing table ■ Fitted doorwell mat ■ **NEW** Status TV aerial and signal booster ■ **NEW** Full length door flyscreen

## AUVERGNE

A conventional five berth caravan, but one which you can specify with either 'L' shaped front seating or lounge seating with chest of drawers. The rear double dinette has sliding doors to enable separation from the main saloon at night time.

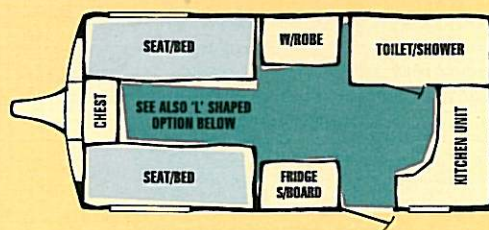


## 5 BERTH

Internal Body Length	5.159m	16'11"
Shipping Length	6.825m	22'5"
Overall Width	2.19m	7'2"
Maximum Headroom	1.90m	6'3"
Overall Height	2.71m	8'10"
Ex Works Weight ±3%	999kg	19.7cwt
Caravan Allowable Payload	234kg	4.6cwt
Maximum Auth. Weight	1263kg	24.9cwt

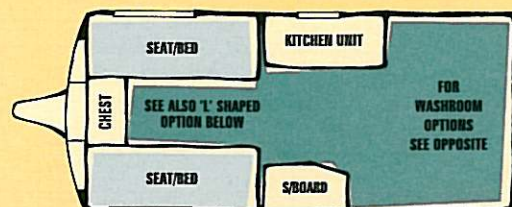
## CABRIOLET

The new Cabriolet continues to boast an 'L' shaped kitchen and a larger than average washroom with built in hand basin. The two berth accommodation is provided in the front saloon which can be ordered in a choice of layouts.



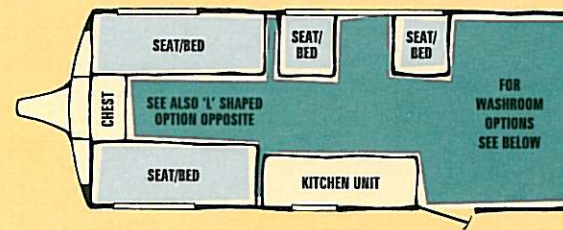
## MAGENTA

Not only does this centre kitchen two berth have a choice of layouts in its front saloon, but it can also be ordered with one of two alternative rear washroom layouts - no wonder then, that the Magenta is one of the most popular choices available.



## CHAMPAGNE

Ideal either as an optional four berth or a spacious two/three berth the Champagne offers a choice of both rear washroom layouts and front lounge layouts. This flexibility comes with generous kitchen and storage facilities throughout.

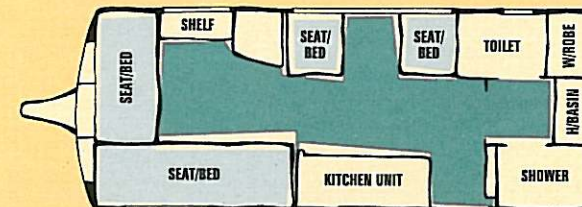


## 3/4 BERTH

Internal Body Length	5.159m	16'11"
Shipping Length	6.825m	22'5"
Overall Width	2.19m	7'2"
Maximum Headroom	1.90m	6'3"
Overall Height	2.71m	8'10"
Ex Works Weight ±3%	985kg	19.4cwt
Caravan Allowable Payload	232kg	4.6cwt
Maximum Auth. Weight	1247kg	24.5cwt

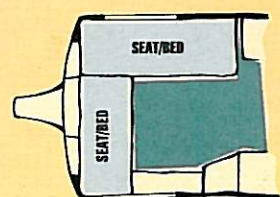
## MOSELLE

A dedicated layout, Moselle has 'L' shaped front seating, a single side dinette and a special new washroom which separates the three components of the facility, toilet, hand basin and shower into separate compartments. At only 17'3" interior length the use of space is startling.

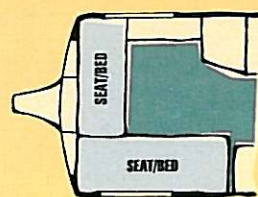


## 4 BERTH

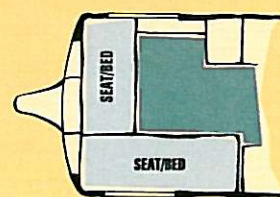
Internal Body Length	5.258m	17'3"
Shipping Length	6.924m	22'9"
Overall Width	2.19m	7'2"
Maximum Headroom	1.90m	6'3"
Overall Height	2.71m	8'10"
Ex Works Weight ±3%	973kg	19.1cwt
Caravan Allowable Payload	230kg	4.5cwt
Maximum Auth. Weight	1232kg	24.2cwt



'L' shaped option for the Majestic, Cabriolet and Magenta



'L' shaped option for the Champagne



'L' shaped option for the Auvergne



'S' Washroom

Rear end washroom options for the Manta, Avallon and Bordeaux



'V' Washroom

## Pageant Layout Options

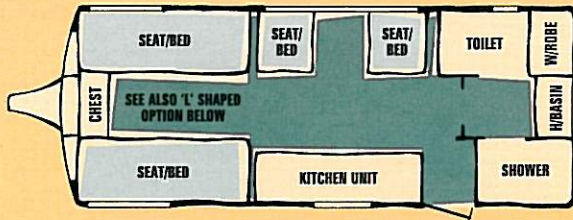


# Senator

## 3/4 BERTH

Internal Body Length	5.258m	17'3"
Shipping Length	6.924m	22'9"
Overall Width	2.19m	7'2"
Maximum Headroom	1.90m	6'3"
Overall Height	2.71m	8'10"
Ex Works Weight ±3%	1096kg	21.6cwt
Caravan Allowable Payload	217kg	4.3cwt
Maximum Auth. Weight	1346kg	26.5cwt

The super new 4000 comes with three berth accommodation in the finest style. Lounge seating in the front saloon, a side dinette to provide a single bunk and a generous kitchen area go hand in hand with the unique new rear washroom with individual areas for toilet, hand basin and shower.

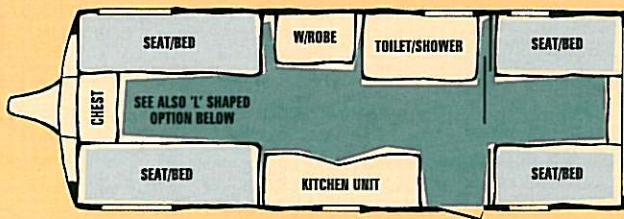


## SENATOR 5000

## 5 BERTH

Internal Body Length	5.753m	18'10"
Shipping Length	7.419m	24'4"
Overall Width	2.19m	7'2"
Maximum Headroom	1.90m	6'3"
Overall Height	2.71m	8'10"
Ex Works Weight ±3%	1158kg	22.8cwt
Caravan Allowable Payload	228kg	4.5cwt
Maximum Auth. Weight	1421kg	28.0cwt

Angled kitchen work surfaces help to create maximum space in the five berth Senator model. The rear dinette converts to a double bed with a single bunk above whilst the front saloon can be ordered with either 'L' shaped or conventional lounge seating.

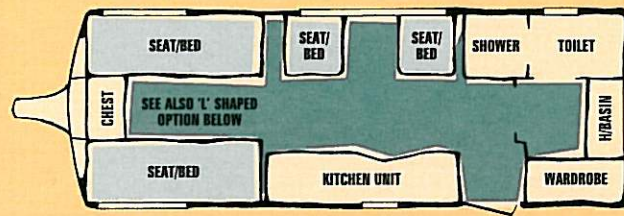


## SENATOR 9000

## 4 BERTH

Internal Body Length	5.753m	18'10"
Shipping Length	7.419m	24'4"
Overall Width	2.19m	7'2"
Maximum Headroom	1.90m	6'3"
Overall Height	2.71m	8'10"
Ex Works Weight ±3%	1152kg	22.7cwt
Caravan Allowable Payload	227kg	4.5cwt
Maximum Auth. Weight	1414kg	27.8cwt

Winner of the Thetford Washroom Of The Year, the 9000 maintains this facility in all its glory with enhanced towel and cupboard storage. As with the Senator 5000, the front saloon can be ordered in a choice of layouts. Opposite the side dinette is probably the finest kitchen available in a touring caravan.

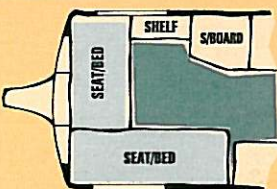
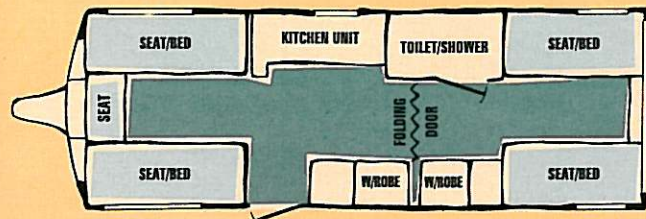


## SENATOR CAMARGUE

## 4/5 BERTH

Internal Body Length	5.944m	19'6"
Shipping Length	7.610m	25'0"
Overall Width	2.19m	7'2"
Maximum Headroom	1.90m	6'3"
Overall Height	2.71m	8'10"
Ex Works Weight ±3%	1170kg	23.0cwt
Caravan Allowable Payload	230kg	4.5cwt
Maximum Auth. Weight	1435kg	28.2cwt

The new Senator flagship with 19'6" of interior length. With a large double dinette at either end accommodation is extremely generous. A dividing door amidships allows a rear bedroom with en suite facilities to be created. Double wardrobes ensure that clothing storage is ample for all occupants and a stylish kitchen completes the layout.



'L' shaped option for the 4000, 5000 and 9000

## SENATOR 4000

### EXTERIOR FEATURES

- Al-Ko, galvanised steel, twin axle chassis with "Euro-Axles" and long "A" frame
- Overrun braking system with auto reversing mechanism
- Steel wheel rims, with full bead retention and bolt on wheel trim
- **NEW** Front one piece panel in G.R.P.
- Rear full height panel in acrylic capped A.B.S.
- **NEW** Rear roof mounted spoiler
- Wrap around rear light cluster
- **NEW** Gas bottle box with swing up lid, featuring storage facility for 2 x gas cylinders and spare wheel/tyre (standard equipment)
- **NEW** Full Senator graphics
- One key operation for all exterior locks
- Battery box with mains electrics input, battery terminals and restraint strap
- Awning light
- Full length rubbing strakes

### STRUCTURAL SPECIFICATION

- 44mm bonded floor with "styrofoam" insulation core
- 31mm bonded ceiling with H.D. polystyrene insulation core
- 29mm bonded sidewalls with H.D. polystyrene insulation core
- Full width double glazed acrylic windows (all opening except fixed door window)

### SOFT FURNISHINGS

- **NEW** Sumptuous 'Mia' chenille interior sprung upholstery
- **NEW** Optional 'Palace' velour interior sprung upholstery
- **NEW** Generous curtains
- Curtain pelmets finished in curtain material
- **NEW** Deep pile carpet

### ELECTRICAL SYSTEM

- **NEW** Comprehensive 240 volt, mains electric system, with R.C.C.B. protection
- 3 x 240 volt mains sockets
- **NEW** Mains lights in front saloon
- 20 metre mains connection lead
- Battery charger (fully protected) with full 10 amps output
- **NEW** 12 volt fused electrical system with control panel (with battery condition meter)
- 12 volt fluorescent light fittings
- **NEW** 12 volt "eyeball" reading lights
- 12 volt plug and sockets
- Exterior 12 volt sockets for optional pump filling of cassette toilet and inboard water tank
- **NEW** Independent courtesy switches for saloon and washroom lighting

### KITCHEN EQUIPMENT

- **NEW** Domestic style taps
- Combined sink and drainer in vitreous enamel
- **NEW** Fitted Stoves Vanette oven, 4 burner hob/grill with spark ignition, flame failure device and saucepan storage facility
- **NEW** Fold up worktops with finished edges
- **NEW** Cutlery storage tray
- Crockery storage provision
- **NEW** Electrolux RM 4271 fridge (77 litre) with three way operation (240v, 12v and gas) full width freezer compartment and electronic ignition

### WATER SYSTEM

- Fully pressurised system with Carver Crystal filtered inlet and submersible pump, in line pressure switch and surge damper
- Inboard water tank with dedicated pump and exterior fill facility
- **NEW** Carver Cascade GE Plus water heater (gas and 240v operation)
- Carver mains water hook up facility
- Hot and cold mixer taps
- Fully inboard plumbing
- Convoluted waste hose system routed to underfloor socket(s) at rear of caravan
- Large size waste outlets

### WASHROOM FEATURES

- Moulded shower tray
- Full shower fittings
- Vanitory unit
- Electric flush Thetford cassette toilet
- Shower curtain (glazed shower door in certain models)
- Hot and cold mixer tap
- Towel rail
- Toilet roll holder
- 4 way rooflight with flyscreen

### HEATING EQUIPMENT

- Carver 3000 space heater
- **NEW** Carver "Fanmaster" mains 2kw. heater
- Ducted blown air central heating

### GENERAL FEATURES

- **NEW** Additional shelving in larger overhead lockers
- **NEW** Comprehensive security system (premium discount from Caravan Club Insurance Services available)
- 4 way rooflight with flyscreen in main saloon
- **NEW** Deluxe chest of drawers on 6' front saloons with fold out table
- Pull out slats on main double bed make ups
- **NEW** Solid wood framed furniture doors
- Restraint catches on key storage facilities for safety whilst towing
- Status TV aerial with signal booster
- Blinds/flyscreens fitted to all opening windows
- Full length door flyscreen
- Cassette blind to door window
- Fitted clock
- Drop down flaps on large bed box fronts
- Slatted tops to all bed boxes
- Dedicated table stowage facility
- Free standing table
- Fitted doorwell mat

Whilst every attempt is made within this brochure to accurately reflect and describe our 1996 model home market caravans (those purchased, stored and used on the Mainland for leisure purposes) our policy of continued improvement and changes in market and supply conditions mean that we reserve the right to alter specifications without further notice. In this brochure some of the photographs feature items which are not included in the caravan specification – your Bailey retailer will confirm these and all specification details prior to you making your purchasing decision. Bailey retailers sell our products of their own choice and not as agents of Bailey. They are therefore unable to bind Bailey or make any representation or undertaking whatsoever on behalf of Bailey Caravans Ltd. Some materials used in the production of our caravans can result in a variation to the figures quoted in respect of measurements and weights. All datum is calculated using metric weights and measurements. The imperial figures quoted are conversions thereof. The caravans in this brochure conform to the British Standard for Touring Caravans BS 4626 and BS 6765, E & D.E.

With thanks to Bristol Water and Land Rover for their help in producing this brochure.

Designed by TRM Graphic Design & Advertising, Bristol. Photography by Simon M. Dodd. Print arranged by Fosse Print Management.

# Senator Layout Options





***BAILEY***

THE MARQUE  
OF EXCELLENCE

YOUR LOCAL BAILEY RETAILER

Bailey Caravans Limited, South Liberty Lane, Bristol BS3 2SS