

Swift Caravans 2002



**YOUR 1<sup>ST</sup> CHOICE FOR  
MORE CHOICE**

- OVER 300 CARAVANS ON SHOW
- INDOOR & SEASONAL OUTDOOR CAMPING DISPLAY
- AWNING DISCOUNT CENTRE
- ACCESSORIES SUPERMARKET
- 5 STAR SERVICE CENTRE & REPAIR WORKSHOPS
- FINANCE & INSURANCE (SUBJECT TO STATUS)

**GUARANTEED A  
WARM WELCOME**

**HIGHBRIDGE**

Caravan and Camping Centre

**OPEN 7 DAYS  
A WEEK**

 **01278 782725**

A38, BRISTOL RD, HIGHBRIDGE, SOMERSET, TA9 4EX  
[www.highbridge-caravans.co.uk](http://www.highbridge-caravans.co.uk)



SWIFT CARAVANS are the result of more than three decades of quality and innovation that has earned Swift the distinction of being revered as the thoroughbred of the touring caravan world.

Swift designers and craftsmen constantly explore new ways to upgrade existing models and develop exciting new layouts, resulting in an enviable collection of 28 desirable tourers.

The Corniche, Conqueror, Challenger and Charisma ranges all display the loving care and attention to detail that makes Swift the setter of standards and winner of countless awards.

Quality with style has been Swift's motto for many years. Investment in advanced computer technology ensures that all models are produced to the same uncompromising quality, whilst computer aided design (CAD) allows designers to consider every improvement possible before a prototype is even produced.

Such technology automatically checks safety and stability variances at blueprint stage. Even so, Swift engineers conduct over 200 stringent manual tests in their drive for perfection. This commitment ensures all models comply with the latest European legislation and has earned Swift the prestigious ISO 9001 certificate in recognition of their quality systems.

An ultra-modern manufacturing facility, involving computer numerically controlled (CNC) machines, state-of-the-art CAD (computer aided design) and CAM (computer aided manufacture) facilities enables Swift to produce engineering standards of accuracy in furniture construction, a unique system giving dual benefits of the finest quality finish and rigid construction.

Total customer satisfaction is top priority at Swift, and the quality ethos extends to the Supercare aftersales service and SuperSure manufacturer's 3 year warranty that come with every new Swift tourer. Everything is provided to ensure you have a relaxing holiday - the Swift way.

Swift Caravans are the result of more than three decades of quality and innovation that has earned Swift the distinction of being revered as the thoroughbred of the touring caravan world. Swift designers and craftsmen constantly explore new...

# CORNICHE

is a tourer for the discerning. Flush fitting windows and subtle graphics give this desirable collection distinctive style whilst its streamlined shape, created through the skilled use of GRP, enjoys combined qualities of strength and durability in addition to aesthetic advantages of distinctive good looks and a high-gloss finish.

Interior refinement takes touring to a new dimension; stylish swan-neck mains lighting in silver sand sets off the warm, luxurious interior whilst Italian designer furniture in Korsika apple is beautifully complemented with sumptuous new upholstery in a choice of Porto chenille or Amble Blue cotton offering unparalleled levels of comfort and style.

Downlighters provide soft lighting to illuminate the well-equipped kitchen and washroom, highlighting the slot-in Stoves oven and matching recessed stainless steel sink, generous 86-litre Electrolux fridge and luxury vanity units with handcrafted cabinets.



Corniche 17/3



Corniche 17/3



collection distinctive style whilst its streamlined shape, created through the skilled use of GRP, enjoys combined qualities of strength and...

# CORNICHE

finishing touches are all important and Corniche gives every detail careful consideration

FINISHING TOUCHES are all important and Corniche gives every detail careful consideration ensuring a successful blend of inspired design and functionality. Sockets, handles and electrical fittings are carefully colour co-ordinated in stylish silver sand. The new easy-glide twin-track curtain rail, designed to improve overall curtain presentation, and the ingenious flush fitting Seitz window unit, complete with integral blind and fly screen, add further practicality to innovative style. The new moulded exterior door liner serves to enhance internal appearance whilst providing integral magazine storage.

For those with an eye for quality and a quest to tour in uncompromising luxury and style, the Corniche will be a pleasure to own and enjoy.



CORNICHE 17/35B



Corniche 15/2NT



Corniche 17/35B



Corniche 17/35B

ensuring a successful blend of inspired design and functionality. Sockets, handles and electrical fittings are carefully colour co-ordinated in stylish...

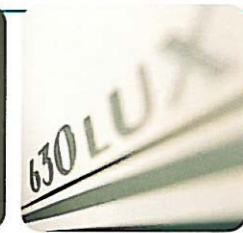
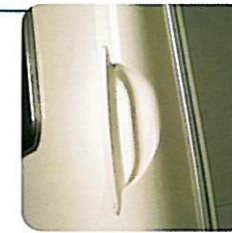
# CONQUEROR

synonymous with impressive style and high standards, the twin-axle Conqueror enjoys an enviable combination of comfort, practicality and design innovation.

SYNONYMOUS with impressive style and high standards, the twin-axle Conqueror enjoys an enviable combination of comfort, practicality and design innovation.

New graphics give artistic flair to the desirable exterior featuring the prominent Swift family emblem, the mark of renowned quality and style. Alloy wheels and heavy duty corner steadies enhance the up market appeal, whilst a new flush fitting awning light and hitch cover courtesy light add further detail to an already impressive specification.

Joining this remarkable six-model collection is the new 645, featuring a separate double bedroom, with island bed and centre shower room.



... New graphics give artistic flair to the desirable exterior featuring the...

Conqueror 630

COMFORTABLE and relaxed, professional designers have carefully co-ordinated spacious interiors to present optimum style and quality with meticulous attention to detail. New Arabesque wall lining gives a warmer domestic feel whilst curvaceous locker doors finished in Korsica Apple are perfectly set off by contrasting mouldings in rich Cherry Wave. The contemporary cocktail cabinet, illuminated with back-lighting and impeccably finished with a curved acrylic door, makes a welcome addition to the lounge and is just one of many new and exciting features available for 2002.

Packed with features including an omnivent extractor fan, 86 litre fridge, built in water tank, 2 Heki rooflights in fixed bed models, an external BBQ point and the latest security alarm, the Conqueror is more than a match for the competition.



Conqueror 650



Conqueror 650



CONQUEROR - comfortable and relaxed, professional designers have carefully co-ordinated spacious interiors to present optimum style and quality with meticulous attention to detail. New Arabesque wall lining gives a warmer domestic feel...

# CONQUEROR

- the new 645 offers the ultimate combination of luxury and practicality. The privacy and luxury of a permanent rear double bedroom is combined with the convenience of centrally located separate toilet-washroom and sealed shower room independently accessible from either end of the caravan.

THE NEW 645 offers the ultimate combination of luxury and practicality. The privacy and luxury of a permanent rear double bedroom is combined with the convenience of a centrally located separate toilet-washroom and sealed shower room independently accessible from either end of the caravan.

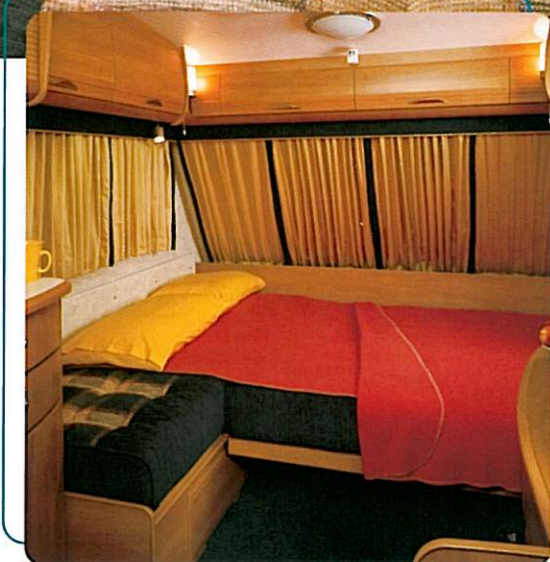
Conqueror 645



Conqueror 645



Conqueror 580



Conqueror 580

privacy and luxury of a permanent rear double bedroom is combined with the convenience of centrally located separate toilet-washroom and sealed...

# CHALLENGER

— where luxury meets affordability, the best selling Challenger models offer a perfect

WHERE LUXURY meets affordability, the best selling Challenger models offer a perfect combination of style and specification. Enjoying a totally new look, improved storage and equipment level this award-winning favourite offers an inspired range of 9 models, including three new layouts, to suit couples and families alike.

Contemporary graphics reflect Swift style to perfection whilst alloy wheels, silver window edges and new flush fitting awning light update exterior style and specification.

All models offer the ultimate blend of advanced design and comfort. Italian designer Tecnoform furniture, enhanced with contemporary curves, hardwood edges and contrasting mouldings in warm Cherry Wave, complements the deluxe two-tone Vivaldi upholstery creating a relaxed and comfortable environment.

A new preformed exterior door liner, with built in magazine storage and window blind, add further style and practicality.



Challenger 520



Challenger 520



combination of style and specification. Enjoying a totally new look, improved storage and equipment level this award-winning favourite offers an...



# CHALLENGER

Interiors enjoy all the fruits that quality, design and attention to detail can bring.

CHALLENGER interiors enjoy all the fruits that quality, design and attention to detail can bring.

New wall covering gives greater domestic appeal whilst new mains and 12v halogen lighting provides the ideal ambience by night. Details such as electrical sockets, contemporary handles, spotlights, coat hooks and bathroom fittings are perfectly co-ordinated in satin silver whilst little extras, like the upholstered magazine rack (model specific) provide that finishing touch.

Kitchen layouts are enhanced with larger work surfaces, complete with attractive new laminate in quarry finish, improved pull-out chopping board, new moulded cutlery drawer on smooth steel runners, utensil rack, towel rail and pan stand.



Challenger 520



Challenger 530



Challenger 550



Challenger 400

New wall covering gives greater domestic appeal whilst new mains and 12v halogen lighting provides the ideal ambience by night. Details such as...

# CHARISMA

- attracting attention with its stylish body shell incorporating curved panels, a high level

ATTRACTING ATTENTION with its stylish body shell incorporating curved panels, a high level brake light and exclusive wheel trims is the 2002 Charisma, complete with the distinctive new Swift 'family' graphics design.

Seven models present a diverse range of layouts including a fixed bed with optional wrap-round front seating.

Inside, designers have carefully combined rich colour and luxurious fabric to create warm, inviting interiors. Deluxe Panache chenille is perfectly complemented with matching chenille curtains and tiebacks, new Arabesque wall covering, rich Island Spice carpet and designer Italian Tecnoform furniture in stylish Korsica apple - all well illuminated by new modern 230v mains lights.



Charisma 550



Charisma 550



brake light and exclusive wheel trims is the 2002 Charisma, complete with the distinctive new Swift 'family' graphics design. Seven models present a...

# CHARISMA

- deep hardwood edged worktops, attractive new kitchen laminates and increased work surfaces (model specific) enhance the flush fitting kitchen whilst new

DEEP HARDWOOD edged worktops, attractive new kitchen laminates and increased work surfaces (model specific) enhance the flush fitting kitchen whilst new patterned wall coverings in Graphique Lagon aqua or buttermilk New Kimpton Stripe (model specific) give washrooms a fresh new look.

The Charisma is as practical as it is stylish, enjoying an impressive specification including Truma gas and mains electric heating and hot water system. Comfortable beech sprung bed slats benefit from cantilever-hinged action providing easy access to storage. Cassette flyscreens to all windows, door and panoramic Heki rooflight allow good ventilation for the hottest of continental nights.

The Charisma - outstanding value for money designed to appeal.



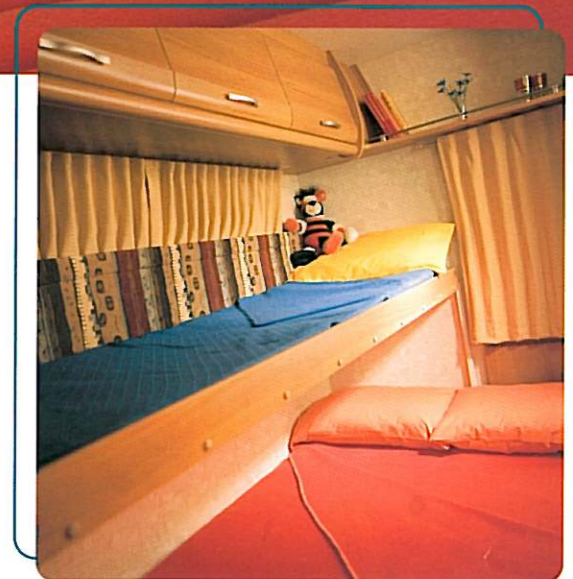
Charisma 550



Charisma 560



Charisma 220



Charisma 540

work surfaces (model specific) enhance the flush-fitting kitchen whilst new patterned wall coverings in Graphique Lagon aqua or buttermilk...

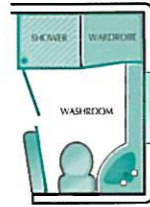
# WASHROOM OPTIONS

constant development of washrooms and changing areas in all four Swift ranges provides practical layouts that offer the greatest possible

## NT Washroom

Available on the following models:

- Corniche 15/2E NT
- Corniche 17/3 NT



## SB Washroom

Available on the following models:

- Charisma 230
- Charisma 235
- Charisma 560
- Challenger 460
- Challenger 480
- Challenger 520
- Challenger 530
- Corniche 15/2E SB
- Corniche 17/3 SB
- Conqueror 580 SB
- SAL/LUX



## Centre Layout Washroom

Available on the following models:

- Charisma 540
- Charisma 545
- Challenger 490
- Challenger 490L
- Conqueror 640
- SAL/LUX
- Conqueror 650 LUX



## End Corner Washroom

Available on the following models:

- Charisma 220
- Challenger 400



## Centre Luxury Washroom

Available on the following models:

- Conqueror 610 LUX
- Challenger 550



## End Luxury Washroom

Available on the following model:

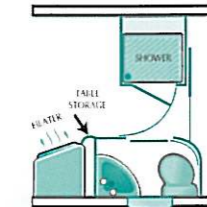
- Conqueror 630 LUX



## Luxury Washroom & Sealed Shower

Available on the following model:

- Conqueror 645



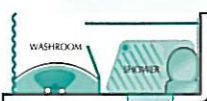
## En-suite washroom

Available on the following models:

- Charisma 550



- Challenger 500



Corniche 15/2NT



Challenger 520



Conqueror 645



Charisma 560

choice in this key area

# Corniche features



## EXTERIOR

New for 2002

- Seitz framed flush fitting windows
- Redesigned graphics
- Heavy duty corner steadies
- External wet locker with integrated mains socket

- Heki 2 rooflight with flyscreen and blind
- Exterior quick release door retainer
- 'A' frame cover light
- Al-Ko galvanised steel chassis with Euro-Axle
- GRP front and rear panel with high level brake light
- Exterior access battery box with mains inlet and aerial socket (battery not included)
- External barbecue point
- Easy access gas bottle storage with gas strut support
- Awning light
- Light clusters incorporating stop/tail, indicator and reverse lights
- Side direction repeater lights
- TV aerial and amplifier
- 14" alloy wheels

- Electrolux fridge vents for ease of maintenance



## LOUNGE/DINING AREA

New for 2002

- 2 new soft furnishing schemes for selected models constructed to reflect domestic style in chenille or cotton

- Curtains in twin track make up for improved hanging and presentation
- New design wall covering in Arabesque
- Lift up easy access beech sprung bed slats
- Furniture with 'Korsica Apple' colour and Italian designer hardwood framed furniture doors
- Curved drawer unit with occasional table
- Free standing hardwood edged table with dedicated storage location
- Domestic quality interior sprung seats and back rests
- Removable bound edged carpet over easy clean vinyl cushion floor



## KITCHEN

New for 2002

- New laminate to kitchen work surface in Formica with quarry finish

- Brushed aluminium panel with halogen downlighters
- Laminate panels behind kitchen with utensil rack and pan stand
- 86 litre Electrolux power fridge
- Recessed stainless steel sink and drainer incorporating flush fitting glass hinged worktop
- Concealed microswitch tap within sink unit
- Pull out sink unit basket storage
- Pull out work top extension/chopping board
- Stoves oven with flush fitting top, 4 burner hob and grill with spark ignition, pan storage and flame failure device
- Safety hob lid with gas cut out feature

## WASHROOM

New for 2002

- New wall coverings in Graphique Lagon aqua or buttermilk New Kimpton Stripe (model specific)
- Sealed shower cubicle
- Electric flush Thetford cassette swivel toilet with independent tank

## HEATING & PLUMBING

- 9 gallon water tank with integral water level sensor
- Truma 3002 3kw space heater with Ultraheat ducted blown air system
- Truma Ultrastore gas and mains electric water heater
- Waste water tank
- Microswitched water system
- Inboard semi-rigid plumbing with push fit connections
- Large bore underslung rigid waste water system

## ELECTRICAL

New for 2002

- New stylish halogen 12v lighting
- New stylish 240v mains lighting and shades
- Colour co-ordinated electrical sockets in silver sand
- Key fob operation to 12v isolation and entry light
- Electrical control panel over exterior door featuring 12v isolation, interior entry switch, alarm, battery and water level indicators
- Dimmer switch to mains lights
- 12v down lighters over kitchen

- 12v down lighters over welsch dresser (15/2 only)
- Philips radio/CD player
- 12 amp switch mode charger/transformer
- Mains electrics with four 230v sockets (one exterior)
- TV station with 230v/12v and aerial connections
- 230v and 12v reading lights
- 25m electric hook up cable



## FITTINGS & EQUIPMENT

New for 2002

- Seitz polyurethane framed windows (except front) with integral blinds and fly screens
- Exclusive preformed moulded interior door liner with integral magazine storage and window blind
- Co-ordinated satin steel locker handles
- Curved worktops in matching woodgrain or quarry effect laminate
- Caravan entrance step
- Double glazing with night latch ventilation
- Full height cassette flyscreen to exterior doorway
- Multi-directional roof lights with blind and flyscreen
- Pull out roller slatted beds
- Ventilation boards to back rests
- Quartz clock
- Concealed metal wall plates for secure furniture fixing
- Spare wheel and tyre
- Side operated jack
- External barbecue point
- Heavy duty door mat with embroidered logo
- Door mat tray with brush out facility
- Omnivent two way 3 speed fan
- Removable garment rail in shower compartment
- Smoke alarm



## SECURITY & SAFETY

- Concealed security data chip within caravan construction
- Passive infra-red security alarm
- Single key high security locks
- Identity number etched to windows and stamped on chassis
- Lockable corner steadies (locks not supplied)
- All models comply with European standards



# Conqueror features



## EXTERIOR

New for 2002

- All new graphics reflecting Swift family lifestyle emblem
- New flush fitting awning light
- Hitch courtesy light
- Alloy wheels
- Salon layouts now feature off side larger picture window and day seat

- Fixed bed models have two Heki sunroofs (one in others)
- Heavy duty corner steadies
- Wet locker incorporating 13 amp socket
- Exterior quick release door retainer
- Aerodynamically efficient styled GRP front panel and back panel incorporating a high level spoiler with brake light and light clusters with stop, tail, side, fog and reversing lights
- Al-Ko galvanised steel chassis with Euro-Axle
- Exterior door with moulded inner liner, window and window blind
- Exterior access battery box with mains inlet and aerial socket (battery not included)
- Easy access gas bottle storage with gas strut to door
- External gas barbecue point
- Electrolux fridge vents for ease of maintenance

- Side direction indicator repeater lights
- TV aerial and amplifier system
- Fixing points for rear mounted cycle rack



## LOUNGE/DINING AREA

New for 2002

- New coloured Arabesque wall covering for warmer domestic feel
- New style Tecnoform curved locker doors in Korsica Apple finish
- Improved new design locker handles in silver satin finish
- Contrasting mouldings in rich Cherry Wave woodgrain finish
- New feature cocktail cabinet with smoked curved acrylic door and back lighting
- All new soft furnishings in deep green and contrasting rich cream Ellington chenille fabric
- Domestic style armrests and two-tone scatter cushions
- New curtain tracks for improved hanging presentation and ease of use
- Improved fixed bed with strong birch plywood frame which allows increased free storage space

increased free storage space

- Centre dinette curtain storage (580)
- Lift up easy access beech sprung bed slats
- Freestanding hardwood edged table with dedicated storage area
- Drawer unit with occasional table (not available in Salon models)



- Domestic quality interior sprung seats and backrests
- Optional 6 berth layout in 650

## KITCHEN

New for 2002

- Improved layouts with increased surface and relocated mains socket in new design
- New kitchen work surface laminates
- Deep hardwood edged worktops
- Matching towel rail on fridge door
- Laminate panels behind kitchen with utensil rack and pan stand
- Improved moulded cutlery drawer on smooth steel runners
- Improved pull-out chopping board (model specific)
- Multi-purpose tambour door locker with provision for microwave (model specific)
- 86 litre Electrolux power fridge
- Recessed enamelled steel sink and drainer incorporating flush fitting glass hinged worktop
- Concealed microswitch tap within sink unit
- Stoves oven with flush fitting top, 4 burner hob and grill with spark ignition, pan storage and flame failure device
- Safety hob lid with gas cut out feature

## WASHROOM

New for 2002

- New wall coverings in Graphique Lagon aqua or buttermilk New Kimpton Stripe (model specific)
- Improved washroom fittings
- New easy access to wardrobe shelving from vanity mirror door (end washroom models)
- Increased vanity bowl size
- New sealed shower cubicle in 610 and 645 models
- One-piece sealed shower cubicle with sliding door in all end washrooms
- Electric flush Thetford cassette toilet with independent tank
- Luxury washrooms with built in wall mirrors, matching shower and vanity unit and integral storage (640 and 650 models)
- Airing cupboard in 630 model

## HEATING & PLUMBING

New for 2002

- 9 gallon internal fresh water tank with level sensor
- Truma 3002 3kw space heater with Ultraheat ducted blown air system
- Truma Ultrastore gas and mains electric water heater
- Wheeled waste water container
- Large bore underslung rigid waste water system
- Inboard semi-rigid piped fresh water system with micro-switch taps

## ELECTRICAL

New for 2002

- New mains and 12v lights colour co-ordinated in silver sand
- New switches and 13 amp sockets colour co-ordinated
- Fitted speakers, wiring, housing and aerial for easy fitting of a sound system
- Electrical control panel over entrance door featuring 12v isolation, interior entry switch, alarm, battery and water level indicator
- Mains electrics with four 230v sockets (one external)
- 25m mains hook up cable
- TV station with 230v/12v/aerial connection (two for 610, 640 and 650 models)
- 12 amp switch mode charger/transformer
- All halogen 12v ceiling lights, reading lights and down lighters
- Omnivent 3 speed fan and skylight
- 12 amp switchmode charger/transformer



## FITTINGS & EQUIPMENT

New for 2002

- Exclusive preformed moulded interior door liner with integral magazine storage and window blind
- Improved bunk access ladder storage in wardrobes
- Curved worktops in matching woodgrain or quarry finish laminate
- Caravan entrance step
- Bunk ladder (where bunks supplied)
- Double glazing with night latch ventilation
- Full blinds and flyscreens to all opening windows
- Full height cassette flyscreen to exterior doorway
- Multi-directional roof vents with sliding blinds and flyscreen (to main compartment)
- Pull out roller slatted beds
- Ventilation boards to back rests
- Concealed metal wall plates for secure furniture fixing
- Quartz clock
- Spare wheel and tyre
- Jack system using scissor jack and dedicated mount
- Door mat with embroidered logo in brush out tray
- Removable hanging rail in showers (model specific)
- Smoke alarm



## SECURITY & SAFETY

- Passive infra-red security alarm
- Single key high security locks
- Identity numbers etched to windows and stamped on chassis
- Lockable rear corner steadies (lock not supplied)
- Concealed security data chip within caravan construction
- All models comply with European standards



# Challenger features



## EXTERIOR

New for 2002

- All new graphics with Swift family lifestyle emblem
- New flush fitting integral awning light
- New exclusive 14" alloy wheels
- Hitch courtesy light

- Wet locker incorporating 13 amp socket
- Heki 2 rooflight with flyscreen and blind
- Aerodynamically efficient styled GRP front panel and back panel incorporating a high level spoiler with brake light and light clusters with stop, tail, side, fog and reversing lights
- Al-Ko galvanised steel chassis with Euro-Axle
- Exterior quick release door retainer
- Exterior door with moulded inner liner, window and window blind
- Full height exterior door cassette flyscreen
- Exterior access battery box with mains inlet and aerial socket (battery not included)
- Electrolux fridge vents for easy maintenance and inspection
- Easy access gas bottle storage with gas strut supported door
- Heated external access locker (end washroom models only)

- All windows opening and double glazed
- Side direction indicator repeater lights
- Status TV aerial and amplifier system
- Fixing points for rear mounted cycle rack



## LOUNGE/DINING AREA

New for 2002

- All new soft furnishings in Vivaldi green and contrasting cream chenille fabrics
- New curtain tracks for improved hanging presentation and ease of use
- New Arabesque wall covering for warmer domestic feel
- New furniture styling incorporating:
  - ▶ New style Tecnoform curved locker doors in Korsica Apple finish
  - ▶ New design steel locker handles
  - ▶ Contrasting new mouldings in Cherry Wave woodgrain finish
- New feature cocktail cabinet with smoked acrylic curved door and back lighting
- Birch plywood framed bed tops giving improved strength

- Large 'L' shaped front lounge in 460 and 520 models
- Dedicated storage for centre dinette curtain in 520/530 models
- Lift up easy access beech sprung bed slats
- Sculptured corner and armrest cushions
- Front beds 1920mm (6'3½") in most models



- Freestanding hardwood edged table with dedicated storage area
- Drawer unit with occasional table (parallel front layouts only)
- Domestic quality interior sprung seats and backrests
- Two scatter cushions

## BEDROOM

New for 2002

- Improved fixed bed providing increased storage and styled padded headboards (model specific)

## KITCHEN

New for 2002

- Improved kitchen layouts with increased surface (model specific)
- New kitchen worktop laminates with warm cream finish
- Utensil rack and pan stand on kitchen feature panels
- Improved moulded cutlery drawer on smooth steel runners
- Improved pull out chopping board
- Towel rail on fridge door
- 77 litre Electrolux power fridge
- Recessed enamelled steel sink and drainer incorporating flush fitting glass hinged worktop
- Concealed microswitch tap within kitchen sink unit
- Pull out sink unit basket storage
- Stoves oven with flush fitting top, 4 burner hob, oven and grill with spark ignition, pan storage and flame failure device
- Safety hob lid with gas cut out feature
- L shaped kitchen in 500 with swivel TV facility and sliding room divider storage unit

## WASHROOM

New for 2002

- New access to wardrobe shelving from vanity mirror door (model specific)
- Increased size vanity bowl
- Improved washroom fittings
- Improved bunk ladder storage in wardrobes
- New wall coverings in Graphique Lagon aqua or buttermilk New Kimpton Stripe (model specific)
- New sealed shower cubicle in 550 model
- One-piece sealed shower cubicle with sliding door in all end washrooms
- Electric flush Thetford toilet with independent tank
- Luxury washroom suite with built in wall mirrors and matching vanity unit with integral storage (490/490L and 400)

## HEATING & PLUMBING

- Truma 3002 3kw space heater with Ultraheat ducted blown air system
- Truma Ultrastore gas and mains electric water heater
- Meets grade 2 classification for thermal heating and insulation

- Inboard semi-rigid piped fresh water system with micro switch taps
- Large bore rigid waste and backrests pipes



## ELECTRICAL

New for 2002

- New mains and 12v halogen lights colour co-ordinated in silver sand
- New colour co-ordinated switches and sockets
- Fitted speakers, wiring, housing and aerial as standard for easy fitting of a sound system
- Electrical control panel mounted over entrance door featuring 12v isolation, interior entry switch and battery condition
- Mains electrics with three 230v sockets
- 12v socket
- All halogen 12v ceiling lights, reading lights and down lighters
- 12 amp switchmode charger/transformer
- 25m mains hook up cable connection
- TV station with 230v/12v/aerial connection

## FITTINGS & EQUIPMENT

New for 2002

- Preformed moulded interior door liner with integral magazine storage and window blind
- Curved worktops in matching woodgrain or quarry finish laminate
- Bunk ladder (where bunks supplied)
- Caravan entrance step
- Double glazing with night latch ventilation and concealed fasteners
- Full window blinds and flyscreens to all opening windows
- Multi-directional roof lights with sliding blind and flyscreen to main compartment
- Ventilation boards to back rests (except mid-beds)
- Concealed metal wall plates for secure furniture fixing
- Removable hanging rail in showers (model specific)
- Doormat with embroidered logo and brush out tray
- Quartz clock
- Smoke alarm

## SECURITY & SAFETY

- Concealed security data chip within the caravan construction
- Single key high security locks
- Identity number etched to windows and stamped on chassis
- All models comply with European standards



# Charisma features



## EXTERIOR

New for 2002

- New graphics in distinctive Swift family style
- Smooth finished side panels
- Full GRP front panel

- Lower ABS back panel with Hella Caraluna light clusters including reversing/fog light
- High level brake light
- 14" wheels
- Exterior access locker door
- All windows opening and double glazed
- Heki 2 rooflight with flyscreen and blind
- Exterior quick release door retainer
- Lightweight Al-Ko galvanised steel chassis with Euro-Axle
- Exterior door with window and blind
- Exterior access battery box with mains inlet (battery not included)
- Easy access gas bottle storage area with gas strut support



- Awning light
- High level side marker lights
- TV aerial with amplifier
- Electrolux fridge vents for easy maintenance and inspection
- Fixing points for rear mounted cycle rack

## LOUNGE/DINING AREA

New for 2002

- New look chenille soft furnishings in patterned Panache upholstery
- Chenille fabric curtains with tie-backs
- New coloured Arabesque wall covering in main salon
- Birch plywood framed bed tops giving improved strength
- Tecnoform curved aircraft style locker doors
- Beech sprung bed slat construction with cantilever hinged action for easy access
- Dedicated curtain storage location in the 560 layout
- Deep hardwood edges to worktops
- Furniture in 'Korsica Apple' colour
- Cocktail cabinet in front locker



- Shaped backrests and corner cushions
- Drawer unit with occasional table on parallel layout
- Superior quality domestic style 'reflex' foam seats and backrests
- Freestanding table with dedicated storage area
- Split front base cushions for easy bed make up

## KITCHEN

New for 2002

- Extended work surface in kitchen (model specific)
- Deep hardwood edged worktops
- New kitchen laminates
- Stoves one piece domestic style cooker with four ring hob, grill and flush glass lid
- Automatic gas cut off to cooker lid
- Recessed sink in matching enamel with flush glass over top
- Concealed micro switch tap
- Electrolux 77 litre fridge with full width freezer

## WASHROOM

New for 2002

- New patterned wall covering in Graphique Lagon aqua or buttermilk New Kimpton Stripe (model specific)
- One-piece sealed circular shower cubicle in SB end washrooms (230, 235, 560)
- Shower mixer and dividing curtain in other washrooms (220, 540, 545, 550)
- Large window in centre washrooms
- Fully fitted vanity units with mixer tap
- Thetford cassette toilet

## HEATING & PLUMBING

- Truma 3002 3kw space heater with Ultraheat ducted blown air system
- Truma Ultrastore gas and mains electric water heater
- Meets grade 2 classification for thermal heating and insulation
- Microswitch plumbing system
- Inboard semi-rigid piped water system
- Large bore underslung waste pipes

## ELECTRICAL

New for 2002

- New modern 230v mains lights
- 12v distribution panel by exterior door
- Silver sand circular halogen ceiling lights
- Silver sand adjustable reading lights under front lockers
- Fluorescent light under china locker
- Full mains electrics with two 230v sockets
- TV station with 230v/12v and aerial connection
- Vanity light and mirror to SB compartment shelves
- 12 amp switch mode charger/transformer
- 25m mains hook up facility



## FITTINGS & EQUIPMENT

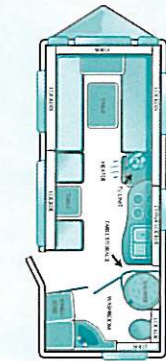
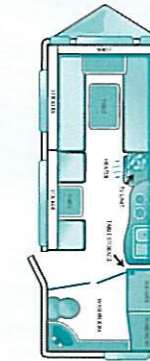
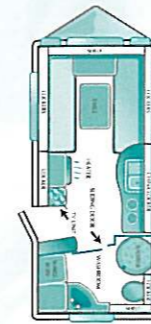
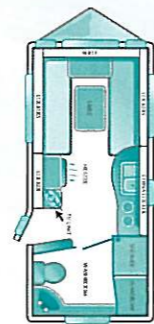
- Domestic style cabinet hinges
- Caravan entrance step
- Bunk ladder (where bunks provided)
- Double glazing with night latch ventilation
- Full window blinds and flyscreens to all opening windows
- Roof lights with night blinds and flyscreens (main compartment)
- Full height exterior door flyscreen
- Pull out roller slatted beds
- Fitted doormat
- Concealed metal wall plates for secure furniture fixing
- Wooden partition doors to rear bedroom models (excluding 550)
- Smoke alarm



## SECURITY & SAFETY

- Concealed security data chip within caravan construction
- Identity number etched to window and chassis stamped
- High security single key operation
- All models comply with European standards



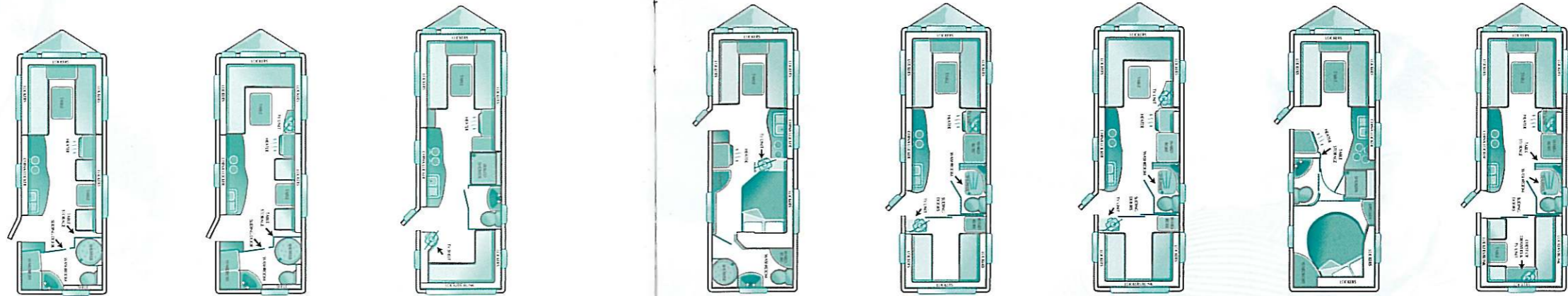


Model	15/2 NT	15/2 SB	17/3 NT	17/3 SB
Berths	2	2	3 opt 4	3 opt 4
Internal Length (At bed box height)	4.70m/15'5"	4.70m/15'5"	5.36m/17'7"	5.36m/17'7"
Overall Width	2.16m/7'1"	2.16m/7'1"	2.16m/7'1"	2.16m/7'1"
Overall Height (Including TV aerial)	2.76m/9'1"	2.76m/9'1"	2.76m/9'1"	2.76m/9'1"
Overall Length	6.40m/21'0"	6.40m/21'0"	7.06m/23'2"	7.06m/23'2"
Mass in Running Order (Inc. 3% tolerance)	1165kg/22.9cwt	1165kg/22.9cwt	1273kg/25.1cwt	1273kg/25.1cwt
Essential Habitation Equipment Payload	115kg/2.3cwt	115kg/2.3cwt	115kg/2.3cwt	115kg/2.3cwt
Personal Effects Payload	105kg/2.1cwt	105kg/2.1cwt	131kg/2.6cwt	131kg/2.6cwt
Optional Equipment Payload	30kg/0.6cwt	30kg/0.6cwt	31kg/0.6cwt	31kg/0.6cwt
Maximum Technical Permissible Laden Mass	1415kg/27.9cwt	1415kg/27.9cwt	1550kg/30.5cwt	1550kg/30.5cwt
Awning A/A Dimension	8.84m/29'0"	8.84m/29'0"	9.50m/31'2"	9.50m/31'2"
Tyre Size	175R14 99	175R14 99	175R14 99	175R14 99

## bed sizes

Front Double† or One Single and One Single	201cm x 190cm/6'7" x 6'3"	201cm x 190cm/6'7" x 6'3"	201cm x 183cm/6'7" x 6'0"	201cm x 183cm/6'7" x 6'0"
Side Single (o/s)	190cm x 66cm/6'3" x 2'2"	190cm x 66cm/6'3" x 2'2"	190cm x 66cm/6'3" x 2'2"	190cm x 66cm/6'3" x 2'2"
Side Bunk	190cm x 66cm/6'3" x 2'2"	190cm x 66cm/6'3" x 2'2"	183cm x 66cm/6'0" x 2'2"	183cm x 66cm/6'0" x 2'2"
			180cm x 66cm/5'11" x 2'2"	180cm x 66cm/5'11" x 2'2"
			172cm x 56cm/5'8" x 1'10"	172cm x 56cm/5'8" x 1'10"

Note: A tolerance of 3% in the Mass in Running Order has been allowed for in the calculation of payload margins.  
†Double bed size is quoted with wrap round seating.



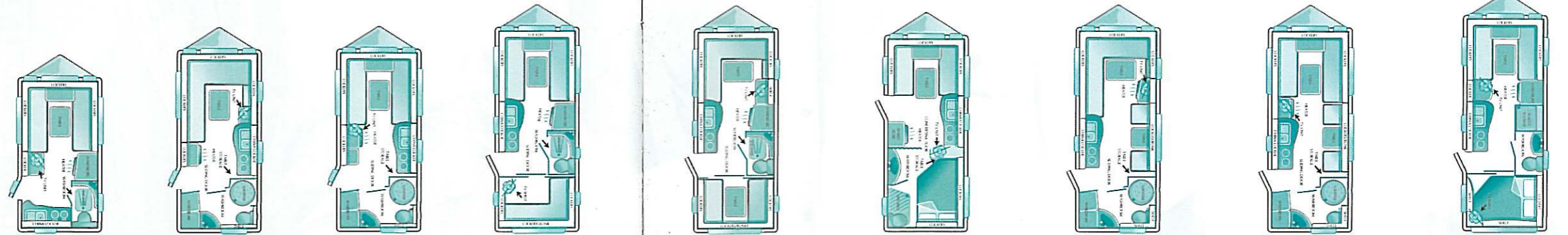
Model	580 LUX	580 SAL	610 LUX	630 LUX	640 LUX	640 SAL	645 LUX	650 LUX
Berths	4	4	5	4	5	5	4	5 opt 6
Axles	2	2	2	2	2	2	2	2
Internal Length (At bed box height)	5.85m/19'2"	5.85m/19'2"	6.35m/20'10"	6.35m/20'10"	6.35m/20'10"	6.35m/20'10"	6.35m/20'10"	6.35m/20'10"
Overall Width	2.23m/7'4"	2.23m/7'4"	2.23m/7'4"	2.23m/7'4"	2.23m/7'4"	2.23m/7'4"	2.23m/7'4"	2.23m/7'4"
Overall Height (Including TV aerial)	2.75m/9'0"	2.75m/9'0"	2.75m/9'0"	2.75m/9'0"	2.75m/9'0"	2.75m/9'0"	2.75m/9'0"	2.75m/9'0"
Overall Length	7.45m/24'5"	7.45m/24'5"	7.95m/26'1"	7.95m/26'1"	7.95m/26'1"	7.95m/26'1"	7.95m/26'1"	7.95m/26'1"
Mass in Running Order (Inc. 3% tolerance)	1339kg/26.4cwt	1339kg/26.4cwt	1423kg/28.0cwt	1442kg/28.4cwt	1434kg/28.2cwt	1425kg/28.1cwt	1456kg/28.7cwt	1444kg/28.4cwt
Essential Habitation Equipment Payload	115kg/2.3cwt	115kg/2.3cwt	115kg/2.3cwt	115kg/2.3cwt	123kg/2.4cwt	123kg/2.4cwt	115kg/2.3cwt	123kg/2.4cwt
Personal Effects Payload	135kg/2.7cwt	135kg/2.7cwt	150kg/3.0cwt	140kg/2.8cwt	150kg/3.0cwt	150kg/3.0cwt	140kg/2.8cwt	160kg/3.2cwt
Optional Equipment Payload	31kg/0.6cwt	31kg/0.6cwt	32kg/0.6cwt	33kg/0.6cwt	33kg/0.6cwt	32kg/0.6cwt	34kg/0.7cwt	48kg/0.9cwt
Maximum Technical Permissible Laden Mass	1620kg/31.9cwt	1620kg/31.9cwt	1720kg/33.9cwt	1730kg/34.1cwt	1740kg/34.3cwt	1730kg/34.1cwt	1745kg/34.3cwt	1775kg/34.9cwt
Awning A/A Dimension	10.00m/32'10"	10.00m/32'10"	10.50m/34'5"	10.50m/34'5"	10.50m/34'5"	10.50m/34'5"	10.50m/34'5"	10.50m/34'5"
Tyre Size	155R13 78	155R13 78	165R13 82	165R13 82	165R13 82	165R13 82	165R13 82	165R13 82

## bed sizes

Front Double† or One Single and One Single	208cm x 190cm/6'8" x 6'3" 190cm x 71cm/6'3" x 2'4" 190cm x 71cm/6'3" x 2'4"	208cm x 137cm/6'8" x 4'6"	208cm x 190cm/6'8" x 6'3" 190cm x 71cm/6'3" x 2'4" 190cm x 71cm/6'3" x 2'4"	208cm x 182cm/6'8" x 5'11" 190cm x 71cm/6'3" x 2'4" 182cm x 71cm/6'0" x 2'4"	208cm x 190cm/6'8" x 6'3" 190cm x 71cm/6'3" x 2'4" 190cm x 71cm/6'3" x 2'4"	208cm x 137cm/6'8" x 4'6" 190cm x 71cm/6'3" x 2'4" 190cm x 71cm/6'3" x 2'4"	208cm x 180cm/6'8" x 5'11" 180cm x 71cm/5'11" x 2'4" 190cm x 71cm/6'3" x 2'4"	208cm x 190cm/6'8" x 6'3" 190cm x 71cm/6'3" x 2'4" 190cm x 71cm/6'3" x 2'4"
Rear Double			192cm x 138cm/6'4" x 4'6"	192cm x 138cm/6'4" x 4'6"	208cm x 137cm/6'8" x 4'6"	208cm x 137cm/6'8" x 4'6"	202cm x 145cm/6'6" x 4'9"	205cm x 137cm/6'9" x 4'6"
Rear Bunk			192cm x 58cm/6'4" x 1'11"		192cm x 56cm/6'4" x 1'10"	192cm x 56cm/6'4" x 1'10"		
Side Single (o/s)	180cm x 66cm/5'11" x 2'2"	180cm x 66cm/5'11" x 2'2"						177cm x 68cm/5'10" x 2'3"
Side Single (n/s)								177cm x 68cm/5'10" x 2'3"
Side Bunk	178cm x 56cm/5'10" x 1'10"	178cm x 56cm/5'10" x 1'10"						172cm x 56cm/5'8" x 1'10"
Optional Bunk								172cm x 56cm/5'8" x 1'10"

Note: A tolerance of 3% in the Mass in Running Order has been allowed for in the calculation of payload margins. \*Estimated weight. †Double bed size is quoted with wrap round seating.



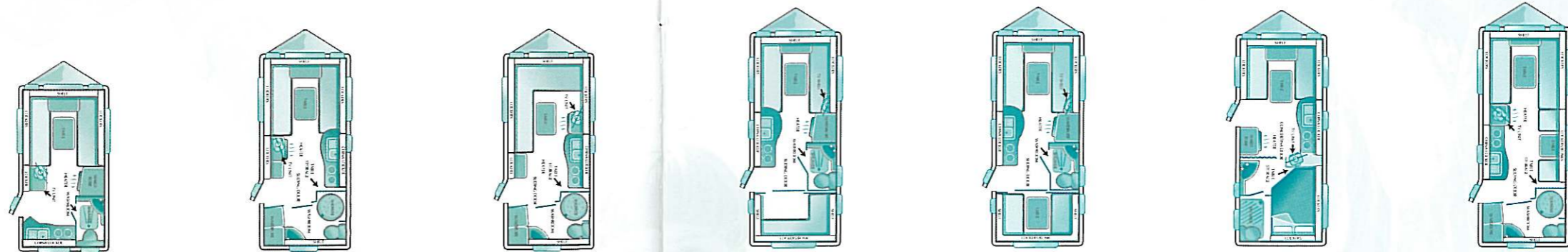


Model	400	460	480	490L	490	500	520	530	550
<b>Berths</b>	2	2	2	5	5	4	4	4	4
<b>Internal Length (At bed box height)</b>	3.94m/12'11"	4.61m/15'2"	4.61m/15'2"	5.23m/17'2"	5.23m/17'2"	5.09m/16'8"	5.23m/17'2"	5.23m/17'2"	5.50m/18'1"
<b>Overall Width</b>	2.16m/7'1"	2.16m/7'1"	2.16m/7'1"	2.16m/7'1"	2.16m/7'1"	2.23m/7'4"	2.16m/7'1"	2.16m/7'1"	2.23m/7'4"
<b>Overall Height (Including TV aerial)</b>	2.76m/9'1"	2.76m/9'1"	2.76m/9'1"	2.76m/9'1"	2.76m/9'1"	2.76m/9'1"	2.76m/9'1"	2.76m/9'1"	2.76m/9'1"
<b>Overall Length</b>	5.52m/18'1"	6.20m/20'4"	6.20m/20'4"	6.81m/22'4"	6.81m/22'4"	6.67m/21'11"	6.81m/22'4"	6.81m/22'4"	7.09m/23'3"
<b>Mass in Running Order (Inc. 3% tolerance)</b>	952kg/18.7cwt	1046kg/20.6cwt	1051kg/20.7cwt	1164kg/22.9cwt	1159kg/22.8cwt	1123kg/22.1cwt	1167kg/23.0cwt	1167kg/23.0cwt	1229kg/24.2cwt
<b>Essential Habitation Equipment Payload</b>	90kg/1.8cwt	82kg/1.6cwt	82kg/1.6cwt	90kg/1.8cwt	90kg/1.8cwt	82kg/1.6cwt	82kg/1.6cwt	82kg/1.6cwt	82kg/1.6cwt
<b>Personal Effects Payload</b>	96kg/1.9cwt	103kg/2.0cwt	103kg/2.0cwt	139kg/2.7cwt	139kg/2.7cwt	128kg/2.5cwt	129kg/2.5cwt	129kg/2.5cwt	132kg/2.6cwt
<b>Optional Equipment Payload</b>	26kg/0.5cwt	26kg/0.5cwt	26kg/0.5cwt	26kg/0.5cwt	26kg/0.5cwt	17kg/0.3cwt	26kg/0.5cwt	26kg/0.5cwt	26kg/0.5cwt
<b>Maximum Technical Permissible Laden Mass</b>	1164kg/22.9cwt	1257kg/24.7cwt	1262kg/24.8cwt	1419kg/27.9cwt	1414kg/27.8cwt	1350kg/26.6cwt	1404kg/27.6cwt	1404kg/27.6cwt	1468kg/28.9cwt
<b>Awning A/A Dimension</b>	8.17m/26'9"	8.84m/29'0"	8.84m/29'0"	9.46m/31'0"	9.46m/31'0"	9.32m/30'7"	9.46m/31'0"	9.46m/31'0"	9.73m/31'11"
<b>Tyre Size</b>	195/70R14 91	195/70R14 95	195/70R14 95	175R14 99	175R14 99	195/70R14 95	175R14 99	175R14 99	175R14 99

## bed sizes

<b>Front Double†</b>	204cm x 190cm/6'8" x 6'3"	204cm x 139cm/6'8" x 4'7"	204cm x 190cm/6'8" x 6'3"	204cm x 190cm/6'8" x 6'3"	204cm x 137cm/6'8" x 4'6"	208cm x 151cm/6'10" x 4'11"	204cm x 139cm/6'8" x 4'7"	204cm x 180cm/6'8" x 5'11"	208cm x 158cm/6'10" x 5'2"
<b>or One Single</b>	190cm x 67cm/6'3" x 2'2"	190cm x 67cm/6'3" x 2'2"	190cm x 67cm/6'3" x 2'2"	190cm x 67cm/6'3" x 2'2"			190cm x 67cm/6'3" x 2'2"	190cm x 67cm/6'3" x 2'2"	
<b>and One Single</b>	190cm x 67cm/6'3" x 2'2"	190cm x 71cm/6'3" x 2'4"	190cm x 67cm/6'3" x 2'2"	190cm x 67cm/6'3" x 2'2"			190cm x 71cm/6'3" x 2'4"	180cm x 67cm/5'11" x 2'2"	
<b>Rear Double</b>				188cm x 132cm/6'2" x 4'4"	204cm x 132cm/6'8" x 4'4"	198cm x 138cm/6'6" x 4'6"			197cm x 137cm/6'6" x 4'6"
<b>Rear Bunk</b>				188cm x 58cm/6'2" x 1'11"	204cm x 58cm/6'8" x 1'11"				
<b>Side Single</b>							180cm x 66cm/5'11" x 2'2"	180cm x 66cm/5'11" x 2'2"	
<b>Side Bunk</b>							178cm x 56cm/5'10" x 1'10"	178cm x 56cm/5'10" x 1'10"	

Note: A tolerance of 3% in the Mass in Running Order has been allowed for in the calculation of payload margins. \*Estimated weights.  
 †Double bed size is quoted with wrap round seating.



Model	220	230	235	540	545	550	560
<b>Berths</b>	2	2	2	5	5	4	4
<b>Internal Length (At bed box height)</b>	3.94m/12'11"	4.61m/15'2"	4.61m/15'2"	5.03m/16'6"	5.03m/16'6"	5.09m/16'8"	5.23m/17'2"
<b>Overall Width</b>	2.16m/7'1"	2.16m/7'1"	2.16m/7'1"	2.16m/7'1"	2.16m/7'1"	2.23m/7'4"	2.16m/7'1"
<b>Overall Height (Including TV aerial)</b>	2.76m/9'1"	2.76m/9'1"	2.76m/9'1"	2.76m/9'1"	2.76m/9'1"	2.76m/9'1"	2.76m/9'1"
<b>Overall Length</b>	5.53m/18'2"	6.21m/20'4"	6.21m/20'4"	6.62m/21'9"	6.62m/21'9"	6.68m/21'11"	6.83m/22'5"
<b>Mass in Running Order (Inc. 3% tolerance)</b>	897kg/17.7cwt	981kg/19.3cwt	972kg/19.1cwt	1061kg/20.9cwt	1056kg/20.8cwt	1064kg/20.9cwt	1090kg/21.4cwt
<b>Essential Habitation Equipment Payload</b>	90kg/1.8cwt	82kg/1.6cwt	82kg/1.6cwt	90kg/1.8cwt	90kg/1.8cwt	82kg/1.6cwt	82kg/1.6cwt
<b>Personal Effects Payload</b>	96kg/1.9cwt	103kg/2.0cwt	103kg/2.0cwt	137kg/2.7cwt	137kg/2.7cwt	128kg/2.5cwt	129kg/2.5cwt
<b>Optional Equipment Payload</b>	22kg/0.4cwt	22kg/0.4cwt	22kg/0.4cwt	47kg/0.9cwt	47kg/0.9cwt	51kg/1.0cwt	49kg/1.0cwt
<b>Maximum Technical Permissible Laden Mass</b>	1105kg/21.8cwt	1188kg/23.4cwt	1179kg/23.2cwt	1335kg/26.3cwt	1330kg/26.2cwt	1325kg/26.1cwt	1350kg/26.6cwt
<b>Awning A/A Dimension</b>	8.17m/26'9"	8.84m/29'0"	8.84m/29'0"	9.26m/30'4"	9.26m/30'4"	9.32m/30'7"	9.46m/31'0"
<b>Tyre Size</b>	195/70R14 91	195/70R14 91	195/70R14 91	195/70R14 95	195/70R14 95	195/70R14 95	175R14 99

## bed sizes

<b>Front Double†</b>	204cm x 190cm/6'8" x 6'3"	204cm x 180cm/6'8" x 5'11"	204cm x 139cm/6'8" x 4'7"	204cm x 190cm/6'8" x 6'3"	204cm x 190cm/6'8" x 6'3"	211cm x 155cm/6'11" x 5'1"	204cm x 180cm/6'8" x 5'11"
<b>or One Single</b>	190cm x 69cm/6'3" x 2'3"	190cm x 69cm/6'3" x 2'3"	190cm x 69cm/6'3" x 2'3"	190cm x 69cm/6'3" x 2'3"	190cm x 69cm/6'3" x 2'3"		190cm x 69cm/6'3" x 2'3"
<b>and One Single</b>	190cm x 69cm/6'3" x 2'3"	180cm x 69cm/5'11" x 2'3"	190cm x 71cm/6'3" x 2'4"	190cm x 69cm/6'3" x 2'3"	190cm x 69cm/6'3" x 2'3"		180cm x 69cm/5'11" x 2'3"
<b>Rear Double</b>				204cm x 116cm/6'8" x 3'10"	204cm x 116cm/6'8" x 3'10"	187cm x 137cm/6'2" x 4'6"	
<b>Rear Bunk</b>				198cm x 56cm/6'6" x 1'10"	198cm x 56cm/6'6" x 1'10"		
<b>Side Single</b>							180cm x 66cm/5'11" x 2'2"
<b>Side Bunk</b>							172cm x 58cm/5'8" x 1'11"

Note: A tolerance of 3% in the Mass in Running Order has been allowed for in the calculation of payload margins.

†Double bed size is quoted with wrap round seating.

Your Local Dealer



Quality with Style



INVESTOR IN PEOPLE



ISO 9001  
TRADE CERTIFICATION  
APPROVED QUALITY SYSTEM



NATIONAL  
CARAVAN COUNCIL  
MEMBER

SWIFT CARAVANS, DUNSWELL ROAD, COTTINGHAM, EAST YORKSHIRE HU16 4JX.

TEL: 01482 847332 FAX: 01482 841042

e-mail: [enquiry@swiftleisure.co.uk](mailto:enquiry@swiftleisure.co.uk) web site: [www.swiftcaravans.co.uk](http://www.swiftcaravans.co.uk)

This brochure does not constitute an offer by Swift Group Limited (Swift). Swift reserves the right to alter specifications and prices at any time as materials and conditions demand. Distributors and dealers sell Swift products on their own account and not as agents of Swift. Accordingly, they have no authority to bind Swift or to make any representation or undertaking whatsoever on behalf of Swift.

The touring caravans described in this brochure are designated by their model year. The model year runs from 1 September to 31 August and the despatch of 2002 models will have commenced on or after 1 September 2001.

Issued September 2001

Volvo cars courtesy of Volvo Cars UK Limited.

Exterior photographs taken at Dalemain Estate, Ullswater, Cumbria