



**YOUR 1ST CHOICE FOR
MORE CHOICE**

- ✓ OVER 300 CARAVANS ON SHOW
- ✓ INDOOR & SEASONAL OUTDOOR CAMPING DISPLAY
- ✓ AWNING DISCOUNT CENTRE
- ✓ ACCESSORIES SUPERMARKET
- ✓ 5 STAR SERVICE CENTRE & REPAIR WORKSHOPS
- ✓ FINANCE & INSURANCE (SUBJECT TO STATUS)

**GUARANTEED A
WARM WELCOME**

HIGHBRIDGE

Caravan and Camping Centre

**OPEN 7 DAYS
A WEEK**



01278 782725

A38, BRISTOL RD, HIGHBRIDGE, SOMERSET, TA9 4EX
www.highbridgecaravans.co.uk



The new Avondale Range 2003

Home from home... ...with the new Avondale 2003 Range!

Thank you for your interest in the Avondale 2003 tourer collection.

The 2003 Avondale range offers more choice than ever before! Whether you are looking for a luxury two-berth or entry-level family tourer we have a model designed to meet your requirements. With twenty-five value for money models in five separate ranges there is a tourer to satisfy all tastes and budgets.

All our 2003 models are designed with Avondale's experience of producing market leading tourers for over thirty years. Our designs combine modern aesthetics and experienced practicality to ensure every model offers the best possible living environment. (Caravan Industry voted the new Dart 470-2 the best two-berth tourer under £10,000 in 2002.)

Avondale are committed to producing tourers that offer you the best possible value for money. We do this by investing in a programme of continuous product improvement. Last year we made over 1,500 changes to our product range, all designed to improve use-ability and reliability. The changes ranged from the obvious, such as the brand new Argente range and the introduction of our unique twin bowl kitchen sink with it's space saving drainer, through to the less obvious, such as the use of new lighter, more durable materials and the addition of extra locker shelves to enable you to make better use of the available storage space. This year's products contain a

whole host of refinements, designed to help make your holidays even more special!

Which range should you choose from? The Dart - Avondale's award winning entry-level range, designed to offer exceptional value for money. The mid priced Rialto - inspired by the best in Italian design. The Argente - modern contemporary design in a wide-bodied tourer. The Avondale - pure club class luxury. The Land-Ranger - the ultimate twin axle tourer.

Please remember that whichever model you choose it will share these unique Avondale features:

- A side mounted gas bottle locker, to make loading easy and concentrate the weight closer to the axle, so whether you've one or two 7kg cylinders nose weight is hardly affected.
- An under-floor storage locker for the spare wheel, keeping it clean, secure and accessible - with its weight sensibly close to the axle ensuring nose weight is hardly affected.
- Avondale's unique rebated side to floor joint, for additional body strength.
- Produced within a company wide quality system that complies to International ISO9001:BS5750 requirements, ensuring its quality.
- Meets or exceeds the new European Design Standard EN1645-1 for tourers, ensuring both your comfort and safety.
- The confidence of a five-year factory backed anti-water ingress warranty, coupled with a general three-year factory backed warranty.

Ask your local distributor to give you a full demonstration of the models that interest you. (Our distributor network is one of the largest in the country). They will also be pleased to discuss the full range of after sales service available when you've purchased your new Avondale.

All new Avondale owners receive our 'Feedback' questionnaire shortly after taking delivery of their new tourer. 'Feedback' is an essential part of our customer care package helping to assure our future customers' satisfaction. Please take a few moments to complete it, as many of our new developments come from customers' comments.

Avondale - your new home from home!

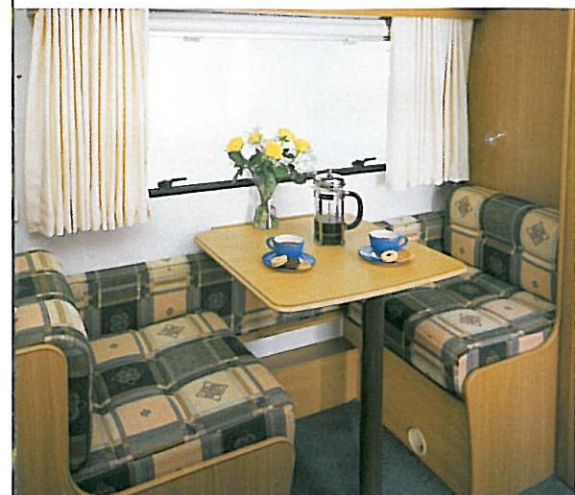
Contents

Dart	4
Rialto	8
Argente	12
Avondale	16
Land-Ranger	20
Features	24
Internal Layouts	25
Specifications	25

- The award winners from Avondale!
- | | |
|---|---|
| Dart 470-2 Caravan Industry - Best 2 berth (up to £10,000) 2002 | Caravan Writers' Guild - Handbook Award 2nd place 2001 |
| Rialto 480-2 Caravan Club - 2nd place Best 2 berth (under £13,000) 2002 | Sewells Distributor Survey - Top UK Volume Manufacturer 2000 |
| Dart 556-6 Practical Caravan - Tourer Of The Year 2001 | Rialto 550-4 Caravan Club - Best Family Tourer 2000 |
| Osprey Caravan Industry - Best Tourer over £15,000 2001 | Avocet Practical Caravan - Best 2 berth (£12.5- £15,000) 2000 |
| Avocet Practical Caravan - Best 2 berth (£12.5- £15,000) 2001 | Dart 515-5 Practical Caravan - Best family tourer (£10-12,500) 2000 |
| Dart 556-6 Practical Caravan - Best family tourer (£10-12,500) 2001 | Avondale Practical Caravan - Best Consumer Initiative 2000 |
| Aqua 2000 Practical Caravan - Best Technical Innovation 2001 | Avondale Caravan Industry - Award for Innovation 1999 |
| | Rialto 550-4 Caravan Club - Best Family Tourer 1999 |
| | Dart 510-5 Practical Caravan - Best family Tourer (£10-12,500) 1998 |



Dart 510-5 L in Willow upholstery



Dart 515-4 side dinette in Willow upholstery



Dart 510-5 washroom



The Dart

Award winning value for money! Following the 556-6's Tourer of The Year Award from Practical Caravan Magazine, last year the new 470-2 won The Caravan Industry's Award for best two-berth under £10,000.

From two to six berths, the entry level Darts are superbly equipped to offer exceptional value for money.

The award winning Dart features include:

- Blown air heating
- Domestic style cooker
- Large refrigerator with full width freezer
- Hot and cold water system
- Remi tilt and slide sunroof
- Lounge illuminated by round 'D' light
- Fly screens and blinds
- Spare wheel as standard

Dart - Exceptional value for money!

The Dart

Everything you need in a modern tourer!

A choice of six models offers you the ideal layout to meet your holiday requirements. The 380-2 is a compact two-berth end kitchen model. The award winning 470-2 two berth features a large side dresser, kitchen and spacious end washroom in an optimum length. The 515-4 four berth is an ideal family tourer, combining the popular features of a side dinette and end washroom. The 510-5 five berth maximises living space with a front and rear lounge area, the latter converting into an end bedroom. Finally, the six berth 556-6, a former Practical Caravan Magazine Tourer of the Year has the benefit of two rear fixed bunks and a side dinette - ideal for children who love their own space!

The popular Willow upholstery completes the Dart specification for 2003. Alternatively, upholstery options from other ranges are available for a small premium.



Dart 515-4 kitchen

The Rialto

The award winners go from strength to strength! Last year the Rialto range added to its list of triumphs with the 480-2 coming second (under £13,000) in the Caravan Club's Tourer of the Year Awards - its second consecutive year in the top three!

Inspired by the best in Italian design, the Rialtos have new windows and completely restyled fronts and rears for 2003. The latter incorporates a high-level brake light for greater safety. Internally, the new front self-supporting hinged bed locker top makes accessing the bed locker storage 'a piece of cake'.

We've also improved the water system with a powerful new onboard, in-line water pump. As you would expect from a tourer of this class, a warm cherry wood interior finish combines with a choice of Orchid or Maple upholstery to give affordable luxury.

Rialto - Award winning style!



Equipped with optional stabiliser

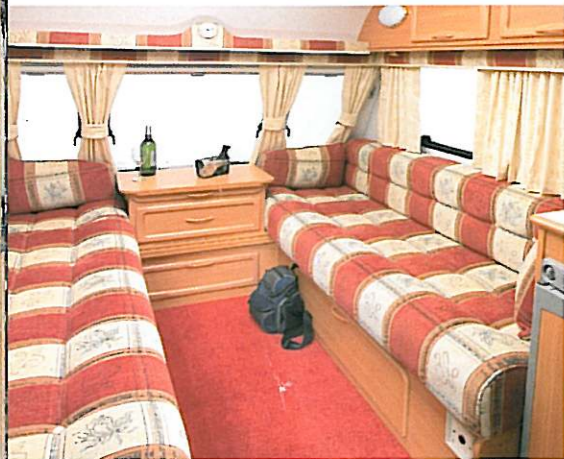
The Rialto

Compact two-berth to twin axle six-berth; the choice is yours!

The 390-2 offers a compact end kitchen layout. Three Rialto models now feature end washrooms with luxury shower compartments. The 480-2 two berth also features a stylish and practical side kitchen, whilst the 550-4 with its side dinette is the ideal family tourer. The four-berth fixed bed 555-4 presents ideal accommodation for two to four people, for those requiring even more space the twin axle 640-6 has two fixed bunks, a side dinette and new, fully lined shower cubicle.

The brand new five-berth 535-5 is a new concept in family touring. Its end bedroom space is designed especially for children and contains three Japanese style fixed bunks.

Rialto 550-4 S in Maple upholstery



Rialto 550-4 S in Orchid upholstery



Rialto 550-4 shower cubicle

Argente - strictly for the young at heart!

The Argente

The brand new Argente range was launched last year to critical acclaim as the first range of wide-bodied tourers to offer the latest in modern design. The Argentes combine Scandinavian style with simple Shaker furniture in a light contemporary Calvados beech finish.

Avondale's new easy access front bed locker system and the powerful new onboard in-line water pump are also incorporated into this stylish range of tourers.

Following its launch year success the Argente range has been extended for 2003 and now offers a range of tourers from two to six berths. All models are available with an option of modern Bergen or Malmo upholstery schemes.



Pictured with optional stabiliser.

The Argente

Brand new for 2003 the 460-2 introduces a two-berth end kitchen model to the Argente range. The ideal model for those requiring a fixed bed layout is the new twin axle four-berth 642-4. Its central bedroom adjoins a beautiful en-suite rear washroom. The 650-6 family six-berth has been cleverly redesigned for 2003. It's night time layout is now more versatile, with the rear train dinette compartment converting to sleep up to four singly or two in an exceptional double!

Argente 650-6 in Malmo upholstery



Argente 650-6 in Bergen upholstery



Argente 650-6 kitchen

Pictured with optional omnivent

The Avondale

Club class in style! The stylish one-piece GRP roof has always set the Avondale range apart from other club class tourers.

The luxury Avondale specification includes everything you could want from a club class tourer. Outside they feature a tilt and slide sun-roof,

Omnivent extractor, AKS stabiliser, alloy wheels, removable hinged front locker lid and external gas and 230 volt electric outlets.

Inside simply sink into the luxury of fully sprung upholstery, listen to the FM radio/CD player and admire! Today's Avondales contain everything

you need to ensure your holiday comfort, from fully equipped kitchens with Electrolux power-fridges and domestic style cookers, through to the award winning Aqua 2000 onboard water system. As you would expect all Avondale models feature the new, easy access bed box system and end washroom models have fully lined

shower cubicles complete with riser bars and mixer taps. All Avondale models are fitted with an integral four-point alarm system for comprehensive security protection.

Specifying your new Avondale couldn't be easier. Simply decide on your

preferred lounge layout, 'L' or 'S' and then choose your upholstery from either the traditional Buckingham or modern Sandringham schemes!



Avondale - Pure Club Class!

The Avondale

The 2003 Avondale range of tourers has three class leading models, the Avocet 'DW', Eagle and Osprey. Each model is available with a choice of traditional straight 'S' or contemporary 'L' shaped lounge seating.

The two-berth Avocet DW with its extra large double wardrobe is ideal for long tours or extended holidays. The fixed bed Eagle provides wonderful accommodation for four people or for couples, who prefer an easy hassle free life, with the luxury of a fixed bed. The award winning Osprey is the definitive family tourer. A spacious end washroom, fabulous kitchen with 'acres' of work surface and a family friendly side dinette all combine to make this the ultimate family tourer!

Avondale Eagle L in Sandringham upholstery



Avondale Avocet DWS in Buckingham upholstery



Avocet washroom

*Land-Ranger - the ultimate
twin axle tourer!*

The Land-Ranger

No other tourer turns heads like the Land-Ranger with its unique body colour and one piece GRP roof. Externally the combination of Moonraker Blue side stripes on Barley White panelling over alloy wheels sets the Land-Ranger apart from the crowd, creating the definitive twin axle tourer.

Internally the Land-Ranger models boast comfort and luxury. Generally equipped to the same high standards as the club class Avondales with features that include an Electrolux power fridge, thermostatically controlled Truma space heater with blown air circulation, front and rear 12v and TV aerial sockets, they also benefit from a unique mini hi-fi stereo system. Security is provided by a remote controlled integral security alarm system complete with awning and lounge light switching feature. On board water is provided by Avondale's award winning Aqua 2000 system.



The Land-Ranger

We have selected the most popular Land-Ranger layout to feature in the 2003 collection. The 6400ES is available with a choice of traditional 'S' or contemporary 'L' lounge layout. Its versatile centre washroom/rear dinette layout makes it ideal for families, friends or couples. The 6400ES can comfortably accommodate up to 5 people. Whilst the rear dinette compartment can be closed off to give total privacy, the mid toilet/shower area makes clever use of space by transforming from a rear access corridor, into an en-suite washroom and dressing area.

To reflect the values of today's Land-Ranger owners a choice of upholstery is available from either the traditional Concerto or modern Eden schemes.



Land-Ranger 6400 ESS in Concerto upholstery

2003 Features

	Model	Dart	Rialto	Argente	Avondale	Land-Ranger
Kitchen	Cooker - New Domestic style with 4 burner hob, separate grill & oven	•	•E	•E	•E	•E
	Down lights - halogen	•	•	•	•	•
	Fridge - 77 litre fridge with full width freezer	•	•	•	•E	•
	Fridge - 77 litre New 'Power' with full width freezer	•	•	•	•E	•
	Fridge - 86 litre New 'Power' with full width freezer	•	•	•	•	•E
	Tap - Domestic style mixer (NEW)	•	•	•	•	•
	Traditional bowl & drainer with cover	•	•	•	•	•
	Twin bowl and space saver drainer (NEW)	•	•	•	•	•
	Water pipes - semi rigid	•	•	•	•	•
	Bed basket, large front	•	•	•	•	•
Interior	Bed - fixed doubles slatted mechanism (NEW)	•	•	•	•	•
	Bed locker tops slatted	•	•	•	•	•
	Front bed locker tops-lift & stay (NEW)	•	•	•	•	•
	Bunk bed ladder (where applicable)	•	•	•	•	•
	Chest-top extending ('S' lounge models only)	•	•	•	•	•
	Clock	•	•	•	•	•
	Cocktail cabinet	•	•	•	•	•
	Door mat & tray	•	•	•	•	•
	Doorway flyscreen	•	•	•	•	•
	First aid kit	•	•	•	•	•
Washroom	Flyscreens and blinds (where possible)	•	•	•	•	•
	Heating Truma blown air system	3002	3002 E	3002 E	3002 E	3002 E
	Locker doors ash framed	•	•	•	•	•
	Omnivent roof light fan	•	•	•	•	•
	Super sun roof	Sliding	Sliding	Sliding	Sliding	Tilting
	Table stowage	•	•	•	•	•
	Upholstery sprung (except bunks)	Front bases	•	•	•	•
	Upholstery wrap round ('S' lounge models only)	•	•	•	•	•
	Fixed hand basin	•	•	•	•	•
	Onboard water tank	•	•	•	•	•
Electrical	Pedestal cassette toilet with header tank	•	•	•	•E	•E
	Shower	•	•	•	•	•
	Shower door (separate cubicle models)	•	•	•	•	•
	Shower cubicle fully lined	•	480-2/550-4/640-6	•	Except Eagle	•
	Water heater (gas & electric)	•	•	•	•	•
	Air conditioning Electrolux Blizzard 1500 (1)	•	•	•	•	•
	Awning light (R=Remote Control)	•	•	•	R	R
	Courtesy entry light switch	•	•	•	•	•
	Lighting - ceiling	•	•	•	•	•
	Lighting - front reading	4	4	4	4	4
Exterior	Low level night light	•	•	•	•	•
	Mains connection lead	•	•	•	•	•
	Mains sockets	2	3	3	3	3+Double
	Reading lights	•	•	•	•	•
	Stereo Mini hi-fi system	•	•	•	•	•
	Stereo radio/cassette (1)	•	•	•	•	•
	Stereo radio/CD player (1)	•	•	•	•	•
	Under bunk lamp	•	•	•	•	•
	12v charger/transformer	•	•	•	•	•
	12v/TV aerial socket	1	2 (555-4 1)	2	2 (Eagle 1)	2
Security	230v mains inlet with ELCB unit	•	•	•	•	•
	230v exterior mains socket	•	•	•	•	•
	Battery locker	•	•	•	•	•
	Chassis - Alko galvanised with Euro axle	•	•	•	•	•
	Gas locker - side mounted	•	•	•	•	•
	Gas point - exterior BBQ	•	•	•	•	•
	High level tail light	•	• Brake	• Brake	• Brake	• Brake
	Jockey wheel - soft foam filled	•	•	•	•	•
	Outdoor equipment locker	•	•	•	•	•
	Roof one piece GRP	•	•	•	•	•
Other	Stabiliser AKS	•	•	•	•	with safety & ball
	Step - entrance	•	•	•	•	•
	TV aerial and booster	•	•	•	•	•
	Wheels - alloy	•	• Silver 2/4	• Silver 2/4	• Silver 2	• Silver 4
	Wheels - stylish trims	•	•	•	•	•
	Alarm with remote control (2 key fobs) (1)	•	•	•	•	•
	Alarm - additional key fob (1)	•	•	•	•	•
	Locks - single key for all	•	•	•	•	•
	Identity number on windows & chassis	•	•	•	•	•
	Security tag - hidden electronic	•	•	•	•	•
Other	Spare wheel (Steel)	•	•	•	•	•
	Spare wheel well (under floor)	•	•	•	•	•
Warranty - 5yrs water ingress, 3yrs general (2)	•	•	•	•	•	

SECURITY - An electronic tag card is fitted to every caravan, in addition all new Avondales are marked with a 17 character vehicle identification number (VIN), die stamped onto the chassis and etched on up to 10 windows. The VIN is recorded on a registration declaration form to be completed by the supplying dealer and sent to CRIS for registration entirely free of charge.

KEY: • Fitted as standard ○ Optional E=Electronic
 Note (1) = Option must be fitted at time of original manufacture.
 Options may only be fitted provided the MTPLM is not exceeded.
 Note (2) = Warranty is offered subject to annual services.

2003 Features

Note: Individual model range features vary, see page 24 for details. Electrolux refrigerators are fitted as standard in all Avondale caravans.



2003 Specifications & Internal Layouts

The Dart

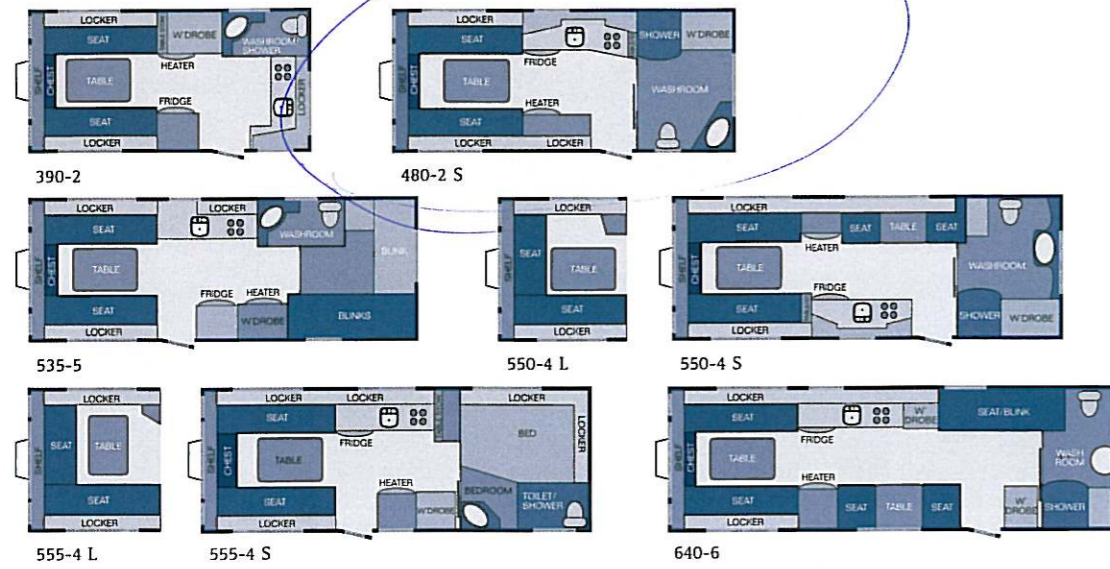


Model	Berths	Internal Length	Internal Headroom	External Length	External Width	External Height	Kitchen	Tyres	Awning Guide
380-2	2	3.80m 12'5 1/2"	1.90m 6'2 1/4"	5.14m 16'10 1/2"	2.13m 6'11 1/4"	2.67m 8'9"	END	165/R13 94N	7.75m
470-2	2	4.75m 15'7"	1.90m 6'2 1/4"	6.09m 19'11 1/2"	2.13m 6'11 1/4"	2.67m 8'9"	CENTRE	165/R13 94N	8.70m
510-5 S/L	5	5.12m 16'9 1/2"	1.90m 6'2 1/4"	6.46m 21'2 1/4"	2.13m 6'11 1/4"	2.67m 8'9"	CENTRE	165/R13 94N	9.07m
515-4	4	5.12m 16'9 1/2"	1.90m 6'2 1/4"	6.46m 21'2 1/4"	2.13m 6'11 1/4"	2.67m 8'9"	CENTRE	165/R13 94N	9.07m
556-6	6	5.50m 18'1 1/2"	1.90m 6'2 1/4"	6.84m 22'7 1/2"	2.13m 6'11 1/4"	2.67m 8'9"	CENTRE	165/R13 94N	9.42m

Model	Bed sizes
380-2	2 singles 1830 x 675 (72" x 27") or 1 double 1980 x 1830 (78" x 72")
470-2	2 singles 1830 x 675 (72" x 27") or 1 double 1980 x 1830 (78" x 72")
510-5 S	2 singles 1830 x 675 (72" x 27") or 1 double 1980 x 1830 (78" x 72") + 1 rear double 1980 x 1140 (78" x 45") + 1 single bunk 1900 x 500 (75" x 20")
510-5 L	2 singles 1830 x 675 (72" x 27") or 1 double 1980 x 1830 (78" x 72") + 1 rear double 1780 x 1120 (70" x 44") + 1 single bunk 1900 x 500 (75" x 20")
515-4	2 singles 1830 x 675 (72" x 27") or 1 double 1980 x 1830 (78" x 72") + 1 single 1830 x 630 (72" x 25") + 1 single bunk 1780 x 530 (70" x 21")
556-6	2 singles 1830 x 675 (72" x 27") or 1 double 1980 x 1830 (78" x 72") + 1 single 1830 x 630 (72" x 25") + 1 single bunk 1730 x 530 (70" x 21") + 2 fixed bunks lower 1980 x 630 (78" x 25") upper 1980 x 600 (78" x 24")

For weight information please see separate sheet. Tabular information - please see footnote on page 27.

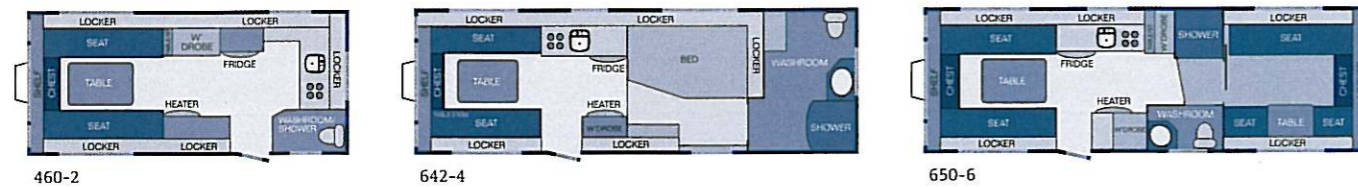
The Rialto



Model	Berths	Internal Length	Internal Headroom	External Length	External Width	External Height	Kitchen	Tyres	Awning Guide
390-2	2	3.95m 12'11 1/2"	1.90m 6'2 3/4"	5.45m 17'10 1/2"	2.18m 7'2"	2.67m 8'9"	END	165/R13 94N	7.87m
480-2 S	2	4.80m 15'9"	1.90m 6'2 3/4"	6.30m 20'8"	2.18m 7'2"	2.67m 8'9"	CENTRE	165/R13 94N	8.72m
535-5	5	5.35m 17'6 1/2"	1.90m 6'2 3/4"	6.85m 22'5 1/4"	2.18m 7'2"	2.67m 8'9"	CENTRE	165/R13 94N	9.27m
550-4 S/L	4	5.50m 18'1 1/2"	1.90m 6'2 3/4"	7.00m 22'11 1/2"	2.18m 7'2"	2.67m 8'9"	CENTRE	165/R13 94N	9.42m
555-4 S/L	4	5.50m 18'1 1/2"	1.90m 6'2 3/4"	7.00m 22'11 1/2"	2.18m 7'2"	2.67m 8'9"	CENTRE	165/R13 94N	9.42m
640-6	6	6.39m 20'11 1/2"	1.90m 6'2 3/4"	7.90m 25'11"	2.18m 7'2"	2.67m 8'9"	CENTRE	165/R13 94N	10.34m

Model	Bed sizes
390-2	2 singles 1830 x 700 (72" x 28") or 1 double 2030 x 1830 (80" x 72")
480-2 S	2 singles 1830 x 700 (72" x 28") or 1 double 2030 x 1830 (80" x 72")
535-5	1 single 1830 x 700 (72" x 28") + 1 single 1770 x 700 (70" x 28") or 1 double 2030 x 1770 (80" x 70") + rear: lower 1820 x 590 (72" x 23"), middle 2030 x 590 (80" x 23"), upper 1780 x 590 (71" x 23")
550-4 S	2 singles 1830 x 700 (72" x 28") or 1 double 2030 x 1830 (80" x 72") + 1 single 1830 x 635 (72" x 25") + 1 single bunk 1720 x 540 (68" x 21")
550-4 L	1 double 2030 x 1400 (80" x 55") + 1 single 1830 x 635 (72" x 25") + 1 single bunk 1720 x 540 (68" x 21")
555-4 S	1 fixed double 1840 x 1330 (73" x 53") at widest point + 2 singles 1830 x 700 (72" x 28") or 1 double 2030 x 1830 (80" x 72")
555-4 L	1 fixed double 1840 x 1330 (73" x 53") at widest point + 1 double 2030 x 1400 (80" x 55")
640-6	2 singles 1830 x 700 (72" x 28") or 1 double 2030 x 1830 (80" x 72") + 1 single 1830 x 625 (72" x 25") + 1 single bunk 1735 x 540 (68" x 21") + 2 fixed bunks 1780 x 620 (70" x 24")

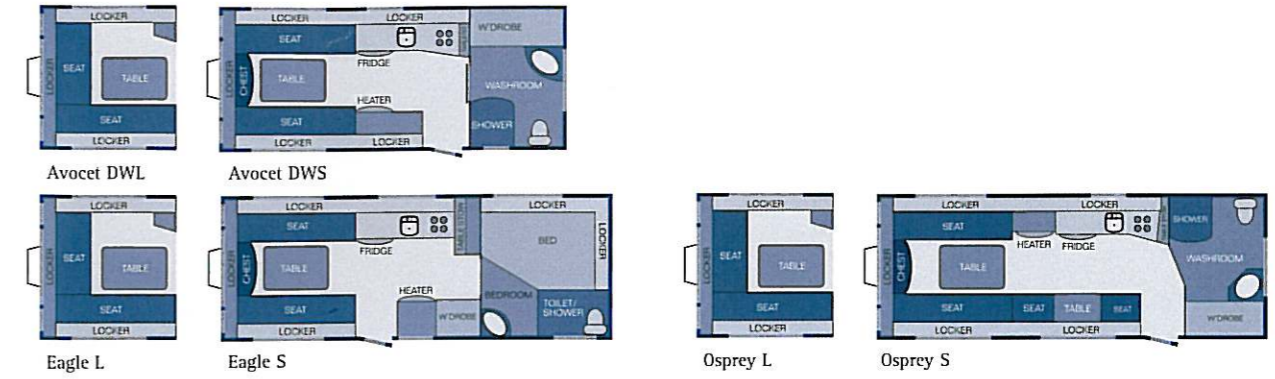
The Argente



Model	Berths	Internal Length	Internal Headroom	External Length	External Width	External Height	Kitchen	Tyres	Awning Guide
460-2	2	4.60m 15'1"	1.90m 6'2 3/4"	6.03m 19'9 1/2"	2.28m 7'6"	2.67m 8'9"	END	165/R13 94N	8.52m
642-4	4	6.42m 21'3 1/4"	1.90m 6'2 3/4"	7.92m 25'11 1/4"	2.28m 7'6"	2.67m 8'9"	CENTRE	165/R13 94N	10.34m
650-6	6	6.42m 21'3 1/4"	1.90m 6'2 3/4"	7.92m 25'11 1/4"	2.28m 7'6"	2.67m 8'9"	CENTRE	165/R13 94N	10.34m

Model	Bed sizes
460-2	1 double 2125 x 1830 (84" x 72") or 2 singles 1830 x 760 (72" x 30")
642-4	1 fixed double 1920 x 1300 (76" x 52") + 1 double 2125 x 1830 (84" x 72") or 2 singles 1830 x 760 (72" x 30")
650-6	1 double 2125 x 1830 (84" x 72") or 2 singles 1830 x 760 (72" x 30") + 2 singles 1840 x 650 (72" x 26") + 2 bunks 1720 x 530 (68" x 21") or 1 double 2125 x 1720 (84" x 68")

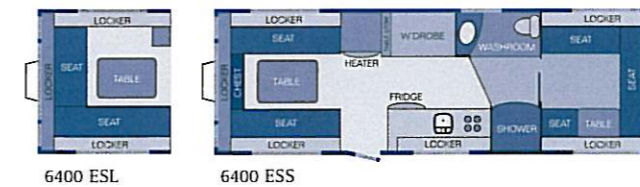
The Avondale



Model	Berths	Internal Length	Internal Headroom	External Length	External Width	External Height	Kitchen	Tyres	Awning Guide
Avocet DWS/DWL	2	4.82m 15'9 3/4"	1.90m 6'2 3/4"	6.23m 20'5 1/4"	2.17m 7'1 1/2"	2.62m 8'7"	CENTRE	175/R14 99N	8.52m
Eagle S/L	4	5.50m 18'1 1/2"	1.90m 6'2 3/4"	6.91m 22'8"	2.17m 7'1 1/2"	2.62m 8'7"	CENTRE	175/R14 99N	9.20m
Osprey S/L	4	5.50m 18'1 1/2"	1.90m 6'2 3/4"	6.91m 22'8"	2.17m 7'1 1/2"	2.62m 8'7"	CENTRE	175/R14 99N	9.20m

Model	Bed sizes
Avocet DWS	2 singles 1900 x 700 (75" x 28") or 1 double 2030 x 1900 (80" x 75")
Avocet DWL	1 double 2030 x 1400 (80" x 55")
Eagle S	1 fixed double 1870 x 1340 (74" x 53") at widest point + 2 singles 1830 x 700 (72" x 28") or 1 double 2030 x 1900 (80" x 75")
Eagle L	1 fixed double 1870 x 1340 (74" x 53") at widest point + 1 double 2030 x 1400 (80" x 55")
Osprey S	2 singles 1900 x 700 (75" x 28") or 1 double 2030 x 1900 (80" x 75") + 1 single 1830 x 630 (72" x 25") + 1 single bunk 1720 x 540 (68" x 21")
Osprey L	1 double 2030 x 1400 (80" x 55") + 1 single 1830 x 630 (72" x 25") + 1 single bunk 1720 x 540 (68" x 21")

The Land-Ranger



Model	Berths	Internal Length	Internal Headroom	External Length	External Width	External Height	Kitchen	Tyres	Awning Guide
6400 ESS/ESL	5	6.44m 21'3 1/2"	1.96m 6'4"	7.94m 26'7"	2.22m 7'3"	2.63m 8'7 1/2"	CENTRE	165/R13 94N	9.95m

Model	Bed sizes
6400 ESS	2 singles 1905 x 700 (75" x 28") or 1 double 2080 x 1905 (82" x 75") + 1 rear double 2080 x 1375 (82" x 54") + 1 single bunk 2010 x 540 (79" x 21")
6400 ESL	1 double 2080 x 1375 (82" x 54") + 1 rear double 2080 x 1375 (82" x 54") + 1 single bunk 2010 x 540 (79" x 21")

Awning sizes are approximate ground measurements and are only a guide. Approximate bed sizes in millimetres at mattress height. Imperial equivalents are to the nearest inch. Metric Dimensions, imperial equivalents shown for information.

Your Avondale authorised distributor is:



Avondale Coachcraft Ltd.
Carlyon Road, Atherstone, Warwickshire, CV9 1JE
Telephone: 01827 715231 Facsimile: 01827 716446
Website: www.avondalecaravans.co.uk

We would like to thank the following for their assistance in the production of the 2003 Avondale brochure:
All photographic models. Mythe Farm, Atherstone and The Inn on the Lake Hotel Ullswater for their co-operation with location photography.

Avondale Coachcraft Limited is constantly seeking ways by which its range of caravans may be further improved. The company reserves the right to alter specifications of its caravans at any time without notice. The illustrations and descriptions given in this brochure are intended as a general guide only and must not be taken as binding. Avondale Coachcraft Limited does not accept liability and shall not be liable for injury or consequential loss or damage, however caused arising from the illustrations and descriptions in this brochure.

Nothing in this brochure shall be deemed to constitute a contract by Avondale Coachcraft Limited.