



LUNAR

WE PUT YOU FIRST

2003

**YOUR 1ST CHOICE FOR
MORE CHOICE**

- OVER 300 CARAVANS ON SHOW
- INDOOR & SEASONAL OUTDOOR CAMPING DISPLAY
- AWNING DISCOUNT CENTRE
- ACCESSORIES SUPERMARKET
- 5 STAR SERVICE CENTRE & REPAIR WORKSHOPS
- FINANCE & INSURANCE (SUBJECT TO STATUS)

**GUARANTEED A
WARM WELCOME**

HIGHBRIDGE

Caravan and Camping Centre

**OPEN 7 DAYS
A WEEK**

 **01278 782725**

A38, BRISTOL RD, HIGHBRIDGE, SOMERSET, TA9 4EX
www.highbridgecaravans.co.uk



The translation of the Lunar crest is 'Our product - our pride'... A personal statement made by our founding directors over thirty years ago and still at the core of Lunar's philosophy today. Since that time, Lunar has built a healthy reputation for its designs and innovation - a reputation complemented by the fact that all Lunar caravans weigh considerably less, caravan for caravan, than any of our rivals.

New layouts, clever and practical improvements, improved specifications... all these are apparent and the unique lightness of all Lunar products gives them a broad appeal to old and new caravanners alike. No other manufacturer offers such a selection of lighter caravans. Check out Lunar's 2003 range...

You will be impressed



More caravan, less weight

Designed to answer the demands of today's touring, Lunar's 2003 range sees the introduction of brand new models and features a host of improvements to our existing range.

Three new models appear for 2003. The Delta 640EW is based on the fantastically successful Lexon EW with a host of added extras such as the 86 litre powerfridge from Electrolux, the CD/Radio, inboard water tank, Omnivent extractor fan over the kitchen, Concept 'Kel' security system and the external sealed locker compartment.

All model ranges (except the Ariva GTS) feature long single seats (6'2"/1.88m) to further enhance the already comfortable lounge area.

The Clubman 400-2 is a traditional end kitchen 2 berth caravan offering superb comfort and facilities, as does the new Clubman 470-2, a very special and very unique luxury caravan that combines the popular washroom facility with the concept of an end kitchen. Remarkable!

Setting future standards

At Lunar we are caravanners too, and our own special understanding of your needs has resulted in many practical advantages. The quality of our cabinet work is something we are particularly proud of. Note how all of our ranges have undergone significant changes in, for example, the roof locker designs. The use of angles and curves creates an enormously satisfying vista and a feeling of openness and space which does not compromise on the practicalities of lots of storage.

Then there's the slide-to-side easy access into the bed box storage. Built into many kitchens is the pull-out chopping board and for added safety there is the low level courtesy light. There are so many more features where Lunar quality shines through... All designed to make caravanning a real pleasure.

Relaxation and pleasure

With the high level of standard equipment fitted throughout the different ranges, we are sure there's a Lunar caravan that will meet your needs perfectly...

The automatic ignition fridge and external 230v mains socket are new features in the Astara and Lexon ranges, whilst all Delta models have the remote access Concept 'Kel' security system as standard.

The tilt and slide sunroof brings extra light to the living area and assists airflow on those warm summer days. The stereo CD player in Clubman and Delta models creates the right mood for relaxing in the extremely comfortable lounge, and the new lighting creates a special ambiance as you settle down for the evening.

As a caravanner you are bound to be weight conscious, so you will appreciate the many years of experience and development which give Lunar the edge in saving every last kilogram. By utilising materials which are light in weight yet strong in use, and by paying meticulous attention to manufacturing methods, we build caravans that are lighter than any comparable product, without sacrificing either strength or quality.

Check out Lunar's 2003 range at your dealer now!

Ariva GTS



Narrower and lighter than any of its rivals, the luxurious Ariva GTS is totally unique in its class, offering real caravanning luxury in an easy to handle, lightweight body.

The design of the Ariva GTS with its traditional rear-end kitchen layout gives it a surprisingly roomy and spacious feel, without compromising on storage facilities or the high specification.

The new washroom with swivel toilet is light and spacious, as is the lounge area with the 'Heki' tilt and slide rooflight.

New curved, integrated roof lockers provide ample storage space without affecting the light and roomy opulence that is so uniquely the Ariva GTS.

Ideal for year round caravanning, the gas/electric room heater has ducted blown air for total comfort, and the large fridge with full width freezer is ideal for those little indulgences!

◀ *Compact, lightweight luxury - despite its size the Ariva GTS combines a high level of specification with ingenious use of space to create a comfortable year-round tourer that is truly unique in its class.*



Stellar



Created in response to the need for comfortable, roomy caravans that are of an easily manageable, compact size the unique layout of Lunar's award winning Stellar provides unrivalled space within a small caravan.

Boasting masses of floor and locker space in the slightly wider 2.28m body and an attractive rear-offside kitchen, the Stellar's interior is complemented by beautifully styled natural wood framed roof locker doors. With an extremely high level of specification including blown air heating to the shower room, the Lunar Stellar is the ideal choice for discerning couples.

◀ *The wide-bodied Stellar has a spacious air of luxury, combining big caravan specification with the ease of towing. Its compact design has proven to be a real winner with experienced tourers.*



Solar



The brightly coloured soft furnishings of the Solar are a perfect match for the newly re-styled furniture with its curved natural wood framed doors, creating a pleasing and relaxing environment in which to spend your holidays.

Allied to the soft curves and numerous roof lockers is a comprehensive list of features that will ensure the utmost comfort and enjoyment... including a large fridge with full width freezer, a tilt and slide rooflight and deep, hard-wearing upholstery.

The Solar 615 provides a unique family layout, whilst the bunk and side dinette of the 524 are separated from the lounge by an attractive dresser. The Solar 462 boasts an especially large shower room, whilst the Solar 525 has its large rear dinette afforded privacy by the substantial sliding doors.

◀ *With four models in the range, from two to five berths, Solar is the value for money choice in family touring. Shown here is the Solar 524*



Astara



Astara is a truly outstanding caravan offering exceptional value for money and for 2003 models the specification has been upgraded to include an automatic ignition fridge and external 13 amp socket.

The re-designed roof lockers, complemented by new mains lights and bold soft furnishings have helped create a range of caravans that are very competitive and very weight conscious.

Astara's high level of specification includes everything you would expect from a year round tourer, including gas and electric room and water heaters and a large fridge with full width freezer.

The large tilt and slide sunroof, circular ceiling lights, attractive furniture fabrics and soft furnishings, plus colour co-ordinated equipment, all help to make the Astara as complete a package as any caravanner could wish for.

▲ *The Astara 525 illustrating the large rear dinette area*



Lexon



This new Lexon series is destined to be the best ever, with curved natural wood framed roof locker doors that are gloriously complemented by the new wood finishes.

Now even better value with automatic ignition fridge and external mains socket, the Lexon range offers a superb selection of unrivalled caravanning luxury.

Wider than most other models, the additional space has enabled us to design and build a range of truly unique touring caravans.

The Lexon CD is ideal for family caravanning with its 'end kitchen' layout, the Lexon EW has proved to be a real winner with its fixed bed and large, rear washroom, while the ultimate in spacious touring luxury has to be the Lexon 640. It's large walk-round bed provides a sense of comfortable permanence. The soaraway success however, is the Lexon EB which has a fixed bed as well as a capacious lounge area. Ideal for those lazy summer days or social gatherings.

◀ *An original approach to caravan design, the luxurious wide-bodied Lexon EB*



Clubman



The ever popular Clubman has an indefinable mix of quality and traditional appeal that has proved to be so elusive to others, yet has remained the basis for the Clubman's continuing success over many years.

The new models feature beautifully matched interiors with the newly introduced curved, wrap-around, roof lockers and their distinctive pelmeted effect.

The provision of an independent locker box on the nearside, along with the gas barbecue point and mains 13 amp socket are practical and worthy new features.

A new addition, the 470-2 is a totally unique layout, combining all the benefits of an end washroom with those of an end kitchen. The effect created by the 2.28m body is startling, using the extra space to its best advantage and creating an exciting and new caravanning experience.

This extra dimension has become so successful that the ever popular 475 CK layout is now available in a wider bodied version, the Clubman 475 CKW.

- ▲ Unique Clubman 470-2 rear end kitchen with rear washroom
- ◀ Clubman 475 CK lounge



Delta



The Lunar Delta is a stunningly designed range of models with the fixed bed Delta 640 EW offering that extra touch of luxury in what has become a very popular layout.

The newly designed furniture makes the most of soft curves to enhance the stylish interior layout, but as with every Lunar there is, of course, so much more...

Delta's high level of specification is designed to match the roomy interiors that result from a 2.28m wide body and includes a Status multi-directional television aerial and 'Concept Kel' remote security system – just two of the features which make the Lunar Delta a very special caravan indeed.

All Delta models are equipped with a colour co-ordinated, built-in microwave oven, complementing the stereo CD/Radio, the latest Electrolux 86 litre Powerfridge, the large built-in freshwater tank and numerous other quality features.

▲ Delta 520 - 2

▲ The new Delta 640 EW



Lunar Features 2003

● Fitted ○ Optional – Not available

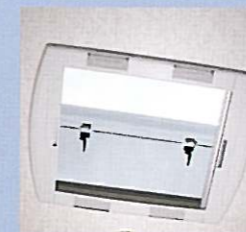
	Ariva GTS	Stellar	Solar	Astara	Lexon	Clubman	Delta
New Curved 2 drawer chest with pull-out coffee table	●	●	●	●	●	●	●
Quartz clock	●	●	●	●	●	●	●
Cocktail cabinet with glass and bottle retainers	●	●	●	●	●	●	●
Lunar entrance doormat and tray	●	●	●	●	●	●	●
Roll-out slats for double bed make-up	●	●	●	●	●	●	●
Armrest (A), scatter cushions (S) and bolster cushions (B)	2xS, 2xB	2xS, 4xA	2xB	2xS, 4xA	2xS, 4xA	2xS, 4xA	2xS, 4xA
Truma gas and electric flued room heater with ducted blown air	●	●	●	●	●	●	●
Truma gas and electric water heater, plumbed to both kitchen and washroom	●	●	●	●	●	●	●
Smoke alarm	●	●	●	●	●	●	●
One key number to suit all locks	●	●	●	●	●	●	●
CRIS identity etched onto windows	●	●	●	●	●	●	●
Hidden identity tag	●	●	●	●	●	●	●
Isolation taps for gas appliances	●	●	●	●	●	●	●
Rugged furniture hinges and handles	●	●	●	●	●	●	●
Low-level 'night time' courtesy light	●	●	●	●	●	●	●
Quality CD/radio, two speakers and CD storage rack	○	○	○	○	○	●	●
Status TV aerial	●	●	●	●	●	–	–
Fully adjustable and directable Status 530 TV aerial	–	–	–	–	–	●	●
Courtesy entry light switch	●	●	●	●	●	●	●
Awning light	●	●	●	●	●	●	●
Colour co-ordinated mains sockets (minimum of 2)	●	●	●	●	●	●	●
20 metre mains connection lead	●	●	●	●	●	●	●
New 230v mains reading lights	●	●	●	●	●	●	●
Adjustable 12v spot reading lights	●	●	●	●	●	●	●
External mains socket	–	–	–	●	●	●	●
External barbecue point	–	–	–	–	–	●	●
12v charger/mains transformer	●	●	●	●	●	●	●
Mains inlet with ELCB protection	●	●	●	●	●	●	●
Omnivent 3 speed, 2 way extractor/rooflight	○	○	○	○	○	●	●
Blinds and flyscreens to all windows	●	●	●	●	●	●	●
Two part exterior door with window and blind	●	●	●	●	●	●	●
Exterior door featuring sturdy, easy grip handle	●	●	●	●	●	●	●
Flyscreen to exterior door	●	●	●	●	●	●	●
Tilt and slide sunroof	●	●	●	●	●	●	●
Al-Ko galvanised steel chassis	●	●	●	●	●	●	●
Separate entrance step	●	●	●	●	●	●	●
External battery locker with easy-fit connectors	●	●	●	●	●	●	●
External near side locker compartment	○	○	○	○	○	●	●
Stylish wheel trims	●	●	●	●	●	●	●
High gloss aluminium	●	●	●	●	●	●	●
Pressurised water system with semi-rigid piping	●	●	●	●	●	●	●
Mud flaps	–	–	–	●	●	●	●
New Attractive redesigned front panel with wide storage access	–	–	●	●	–	–	–
Rear roof spoiler featuring high level brake light	–	–	–	●	●	●	●
Fully insulated walls, floor and ceiling to Grade II classification	●	●	●	●	●	●	●
Upgrade for larger payload	–	○	○	○	○	○	○
Maximum body width	6'7"	7'6"	7'1"	7'1"	7'6"	7'1"/7'6"	7'6"
New Improved interior layouts and brand new models	●	–	–	–	–	400/470	640EW
Shower with dedicated controls	●	●	●	●	●	●	●
On-board 60 litre water tank	–	–	–	–	–	●	●
Fitted cassette toilet with own header tank	●	●	●	●	●	●	●
Large window in washroom	●	●	●	●	●	●	●
Silver blue 'Monaco' bathroom wallboard	●	●	●	●	●	●	●
4 burner hob, grill and oven with flame failure device	●	●	●	–	–	–	–

● Fitted ○ Optional – Not available

	Ariva GTS	Stellar	Solar	Astara	Lexon	Clubman	Delta
4 burner hob, grill and oven with spark ignition and flame failure device	–	–	–	●	●	●	●
Substantial, easy to use lever action tap	●	●	●	●	●	●	●
Electrolux fridge with full width freezer	M	M	M	E	E	–	–
Electrolux 86 litre Powerfridge with full width freezer	–	–	–	–	–	●	●
Halogen downlighters over kitchen	●	●	–	●	●	●	●
Fitted eye level microwave oven	–	–	–	–	–	470/475	●
Bed ventilation boards to improve airflow and reduce condensation	●	●	●	●	●	●	●
New Drop-flap access to front bed box storage	●	●	–	●	●	●	●
Slide-to-side bed slats, allowing unobstructed storage access	●	●	●	●	●	●	●
New 'Apfel' cherry furniture board	–	–	–	–	●	–	–
New Roof locker door design	●	●	●	●	●	●	●
New Stylish rear light clusters	●	●	●	●	●	●	●
New Colour matched worktop laminates	●	●	●	●	●	●	●
New Intergrated, curved roof locker designs	●	●	●	●	●	●	●
New Remote controlled 'Concept Kel' alarm system	–	–	–	–	–	–	●
Dedicated table storage locker	–	●	●	●	●	●	●
Colour co-ordinated fittings, including ceiling lights, switches etc.	●	●	●	●	●	●	●
Fixed bed models with colour co-ordinated mattress, two pillows and cases	–	–	–	–	●	–	●
New Easily erected bunk arrangement for side-berth models	–	–	●	●	–	●	–
Long front lounge seats (6'2"/1.88m)	–	●	●	●	●	●	●



New rear light cluster



'Haki' slide and tilt rooflight



Luxury shower has ample space for toiletries



Eye level microwave oven, a feature of all Delta models and the Clubman 470/475



Delta & Clubman have a fully adjustable TV aerial, others have a standard aerial



A feature of some Lexon models, the external access locker



Substantial bed supports



Spoiler with high level brake light featured on many models



Slide-to-side easy bed box access



Slide out occasional table



CD/Radio in Clubman and Delta



BBQ point in Clubman and Delta



Large drop flap access for under bed storage



Cocktail cabinet



Fitted in Clubmans and Deltas, the Omnivent 3 speed, 2 way extractor



Nearside locker in Clubman and Delta



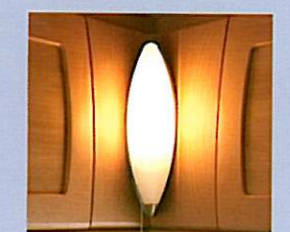
'Concept Kel' key security system in Delta



Robust hinges



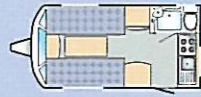
External mains socket in Astara, Lexon, Clubman and Delta



Stylish corner light

Ariva GTS

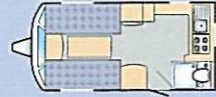
Model	Ariva GTS	
Internal body length	3.63m/11'11"	
Overall length	5.17m/16'11"	
Internal body width	1.90m/6'3"	
Overall width	2.02m/6'7"	
Maximum internal height	1.90m/6'3"	
Overall height	2.65m/8'8"	
Tyre size	155 R13 84N	
Coupling height	440mm/17"	
Mass in running order	790 kg	
Total user payload	210 kg	
MTPLM	1000 kg	
Bed sizes	Double	1.90m x 1.43m 6'3" x 4'8"
	or	
	2 x Single	1.83m x 0.66m 6'0" x 2'2"
Awning guide	804 cm	
	<i>(check with supplier)</i>	



Ariva GTS, 2 berth

Stellar

Model	Stellar	
Internal body length	4.20m/13'9"	
Overall length	5.71m/18'9"	
Internal body width	2.16m/7'1"	
Overall width	2.28m/7'6"	
Maximum internal height	1.90m/6'3"	
Overall height	2.65m/8'8"	
Tyre size	175 R13 94	
Coupling height	440mm/17"	
Mass in running order	915 kg	
Total user payload	210 kg	
MTPLM*	1125 kg*	
Bed sizes	Double	2.10m x 1.48m 6'11" x 4'10"
	or	
	2 x Single	1.88m x 0.74m 6'2" x 2'5"
Awning guide	851 cm	
	<i>(check with supplier)</i>	



Stellar, 2 berth

Astara

Model	Astara 462	Astara 524	Astara 525
Internal body length	4.69m/15'5"	5.30m/17'5"	5.30m/17'5"
Overall length	6.20m/20'4"	6.82m/22'4"	6.82m/22'4"
Internal body width	2.04m/6'8"	2.04m/6'8"	2.04m/6'8"
Overall width	2.16m/7'1"	2.16m/7'1"	2.16m/7'1"
Maximum internal height	1.90m/6'3"	1.90m/6'3"	1.90m/6'3"
Overall height	2.65m/8'8"	2.65m/8'8"	2.65m/8'8"
Tyre size	175 R13 94	175 R13 94	175 R13 94
Coupling height	440mm/17"	440mm/17"	440mm/17"
Mass in running order	970 kg	1080 kg*	1075 kg
Total user payload	220 kg	220 kg	225 kg
MTPLM*	1190 kg*	1300 kg	1300 kg
Bed sizes	Double	2.01m x 1.48m 6'7" x 4'10"	2.01m x 1.48m 6'7" x 4'10"
	or		or
	2 x Single	1.88m x 0.69m 6'2" x 2'3"	1.88m x 0.69m 6'2" x 2'3"
	Single	1.83m x 0.60m 6'0" x 2'0"	
	Double	2.01m x 1.29m 6'7" x 4'3"	
	Bunk	1.76m x 0.56m 5'10" x 1'10"	1.98m x 0.56m 6'6" x 1'10"
Awning guide	900 cm	965 cm	965 cm
	<i>(check with supplier)</i>		



Astara 462, 2 berth



Astara 524, 4 berth



Astara 525, 5 berth

Solar

Model	Solar 462	Solar 524	Solar 525	Twin Axle Solar 615
Internal body length	4.69m/15'5"	5.30m/17'5"	5.30m/17'5"	6.13m/20'1"
Overall length	6.20m/20'4"	6.82m/22'4"	6.82m/22'4"	7.64m/25'1"
Internal body width	2.04m/6'8"	2.04m/6'8"	2.04m/6'8"	2.04m/6'8"
Overall width	2.16m/7'1"	2.16m/7'1"	2.16m/7'1"	2.16m/7'1"
Maximum internal height	1.90m/6'3"	1.90m/6'3"	1.90m/6'3"	1.90m/6'3"
Overall height	2.65m/8'8"	2.65m/8'8"	2.65m/8'8"	2.65m/8'8"
Tyre size	175 R13 94	175 R13 94	175 R13 94	155 R13 78
Coupling height	440mm/17"	440mm/17"	440mm/17"	440mm/17"
Mass in running order	895 kg*	995 kg	995 kg*	1140 kg*
Total user payload	220 kg	240 kg	240 kg	260 kg
MTPLM*	1115 kg*	1235 kg*	1235 kg*	1400 kg*
Bed sizes	Double	2.01m x 1.48m 6'7" x 4'10"	2.01m x 1.48m 6'7" x 4'10"	2.01m x 1.48m 6'7" x 4'10"
	or			
	2 x Single	1.88m x 0.69m 6'2" x 2'3"	1.88m x 0.69m 6'2" x 2'3"	1.88m x 0.69m 6'2" x 2'3"
	Single	1.83m x 0.60m 6'0" x 2'0"		1.83m x 0.69m 6'0" x 2'3"
	Double	2.01m x 1.29m 6'7" x 4'3"		
	Bunk	1.76m x 0.56m 5'10" x 1'10"	1.98m x 0.56m 6'6" x 1'10"	1.70m x 0.56m 5'7" x 1'10"
Awning guide	900 cm	965 cm	965 cm	1050 cm
	<i>(check with supplier)</i>			



Solar 462, 2 berth



Solar 524, 4 berth



Solar 525, 5 berth



Solar 615, 5 berth

Lexon

Model	Lexon EB	Lexon ES	Lexon CD	Lexon EW	Lexon 640
Internal body length	5.56m/18'2"	5.56m/18'2"	6.44m/21'1"	6.44m/21'1"	6.44m/21'1"
Overall length	7.06m/23'2"	7.06m/23'2"	7.96m/26'1"	7.96m/26'1"	7.96m/26'1"
Internal body width	2.16m/7'1"	2.16m/7'1"	2.16m/7'1"	2.16m/7'1"	2.16m/7'1"
Overall width	2.28m/7'6"	2.28m/7'6"	2.28m/7'6"	2.28m/7'6"	2.28m/7'6"
Maximum internal height	1.90m/6'3"	1.90m/6'3"	1.90m/6'3"	1.90m/6'3"	1.90m/6'3"
Overall height	2.65m/8'8"	2.65m/8'8"	2.65m/8'8"	2.65m/8'8"	2.65m/8'8"
Tyre size	175 R13 94	175 R13 94	155 R13 78	155 R13 78	155 R13 78
Coupling height	440mm/17"	440mm/17"	440mm/17"	440mm/17"	440mm/17"
Mass in running order	1140 kg	1140 kg*	1325 kg*	1315 kg	1300 kg*
Total user payload	210 kg	210 kg	275 kg	285 kg	300 kg
MTPLM	1350 kg	1350 kg	1600 kg	1600 kg	1600 kg
Bed sizes	Double	2.10m x 1.48m 6'11" x 4'10"	2.10m x 1.48m 6'11" x 4'10"	2.10m x 1.48m 6'11" x 4'10"	2.10m x 1.48m 6'11" x 4'10"
	or		or	or	or
	2 x Single	1.88m x 0.74m 6'2" x 2'5"	1.88m x 0.74m 6'2" x 2'5"	1.88m x 0.74m 6'2" x 2'5"	1.88m x 0.74m 6'2" x 2'5"
	Double	1.93m x 1.47m 6'4" x 4'10"	1.93m x 1.30m 6'4" x 4'3"	1.83m x 1.19m 6'0" x 3'11"	1.88m x 1.47m 6'2" x 4'10"
Awning guide	985 cm	985 cm	1070 cm	1070 cm	1070 cm
	<i>(check with supplier)</i>				



Lexon EB, 4 berth



Lexon ES, 4 berth



Lexon CD, 4 berth



Lexon EW, 4 berth



Lexon 640, 4 berth

Clubman

Model	Clubman 400-2	Clubman 470-2	Clubman 475CK	Clubman 475CKW	Clubman 530-4	
Internal body length	3.93m/12'11"	4.80m/15'9"	4.80m/15'9"	4.80m/15'9"	5.30m/17'5"	
Overall length	5.40m/17'9"	6.31m/20'8"	6.31m/20'8"	6.31m/20'8"	6.82m/22'4"	
Internal body width	2.04m/6'8"	2.16m/7'1"	2.04m/6'8"	2.16m/7'1"	2.04m/6'8"	
Overall width	2.16m/7'1"	2.28m/7'6"	2.16m/7'1"	2.28m/7'6"	2.16m/7'1"	
Maximum internal height	1.90m/6'3"	1.90m/6'3"	1.90m/6'3"	1.90m/6'3"	1.90m/6'3"	
Overall height	2.59m/8'6"	2.59m/8'6"	2.59m/8'6"	2.59m/8'6"	2.59m/8'6"	
Tyre size	175 R13 94	175 R13 94	175 R13 94	175 R13 94	175 R13 94	
Coupling height	440mm/17"	440mm/17"	440mm/17"	440mm/17"	440mm/17"	
Mass in running order	885 kg	1065 kg	1020 kg	1045 kg	1080 kg*	
Total user payload	220 kg	220 kg	220 kg	220 kg	220 kg	
MTPLM*	1105 kg*	1285 kg*	1240 kg*	1265 kg*	1300 kg	
Bed sizes	Double	2.01m x 1.48m 6'7" x 4'10"	2.10m x 1.48m 6'11" x 4'10"	2.01m x 1.48m 6'7" x 4'10"	2.10m x 1.48m 6'11" x 4'10"	2.01m x 1.48m 6'7" x 4'10"
	or	or	or	or	or	or
	2 x Single	1.88m x 0.69m 6'2" x 2'3"	1.88m x 0.74m 6'2" x 2'5"	1.88m x 0.69m 6'2" x 2'3"	1.88m x 0.74m 6'2" x 2'5"	1.88m x 0.69m 6'2" x 2'3"
	Single					1.83m x 0.60m 6'0" x 2'0"
	Bunk					1.76m x 0.56m 5'10" x 1'10"
Awning guide <i>(check with supplier)</i>	820 cm	915 cm	915 cm	915 cm	960 cm	



Clubman 400-2, 2 berth



Clubman 470-2, 2 berth



Clubman 475 CK, 2 berth



Clubman 475 CKW, 2 berth



Clubman 530-4, 4 berth

Delta

Model	Delta 520-2	Delta 610-3	Delta 640-EW	
Internal body length	5.44m/17'10"	6.26m/20'6"	6.44m/21'1"	
Overall length	6.90m/22'8"	7.76m/25'5"	7.96m/26'1"	
Internal body width	2.16m/7'1"	2.16m/7'1"	2.16m/7'1"	
Overall width	2.28m/7'6"	2.28m/7'6"	2.28m/7'6"	
Maximum internal height	1.90m/6'3"	1.90m/6'3"	1.90m/6'3"	
Overall height	2.59m/8'6"	2.59m/8'6"	2.59m/8'6"	
Tyre size	175 R13 94	155 R13 78	155 R13 82	
Coupling height	440mm/17"	440mm/17"	440mm/17"	
Mass in running order	1135 kg	1310 kg*	1370 kg	
Total user payload	215 kg	290 kg	330 kg	
MTPLM*	1350 kg	1600 kg	1700 kg*	
Bed sizes	Double	2.10m x 1.48m 6'11" x 4'10"	2.10m x 1.48m 6'11" x 4'10"	2.10m x 1.48m 6'11" x 4'10"
	or	or	or	or
	2 x Single	1.88m x 0.74m 6'2" x 2'5"	1.88m x 0.74m 6'2" x 2'5"	1.88m x 0.74m 6'2" x 2'5"
	Single		1.83m x 0.74m 6'0" x 2'5"	
	Double			1.88m x 1.47m 6'2" x 4'10"
Awning guide <i>(check with supplier)</i>	970 cm	1055 cm	1070 cm	



Delta 520-2, 2 berth



Delta 610-3, 3 berth



Delta 640-EW, 4 berth

Important

* These MRO weights are estimated. As the weights are confirmed an addendum will be published. Check with your authorised Lunar dealer.

MRO includes a manufacturing tolerance to reflect changes in the weights of the component materials. It is anticipated that this figure will never be exceeded in the standard ex-works specification.

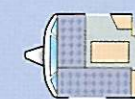
* MTPLM increase option

Most models can have the MTPLM (maximum technical permissible laden mass) increased with minimal disruption. Contact your Lunar Caravans dealer for further information.

Alternative interior Formats

An 'L' front seat option is available for all models except the Ariva GTS, the Lexon CD and the Delta 610-3. This option gives an offside, long picture window and a floor cabinet. The double bed size is 2.01 x 1.23m (6'7" x 4'0").

In addition the Astara 525 is also available with a rear bed 'L' option with a bed size of 1.80 x 1.29m (5'11" x 4'3").



Front 'L' layout option.



Rear 'L' layout option.

Soft Furnishing Selection

We have carefully selected the soft furnishings for each model range. However for a small charge, and subject to availability, selecting the soft furnishings you prefer is no problem with Lunar. Simply ask your dealer to show you the sample swatches of carpet, upholstery and curtain fabrics.

Extended Warranty for touring peace of mind

All Lunar caravans receive a full twelve month's warranty from the date of purchase - for no extra charge, but subject to an annual service and inspection, an extended warranty will cover the following major items, but not items subject to ordinary wear and tear.

Second year of warranty

Body and floor

Against water ingress and delamination.

Head, shaft and damper of the coupling

The entire axle assembly and all aspects of the chassis, including corner steadies.

Third year of warranty

Body and floor

Against water ingress and delamination.

LUNAR
WE PUT YOU FIRST



The now famous Lunar crest carrying the Latin for "Our product - Our pride", sums up a philosophy that has consistently produced award winning touring caravans with new innovative features that are the envy of our competitors, particularly as our caravans are markedly lighter than any comparable caravan.

Lunar Owner's Club

When you choose a Lunar caravan you also have the opportunity to join the growing band of enthusiasts who enjoy all the benefits of the Lunar Owner's Club. As a club member you will be sent regular newsletters containing all the latest information on upcoming events, reviews, letters from fellow members and news from Lunar Caravans itself.

You'll be made very welcome at all the numerous rallies which take place across the country by people sharing a common interest in Lunar caravanning. They can also offer you a wealth of knowledge and expertise to help you enjoy your future touring even more.

There are a wide variety of activities on offer to Owner's Club members including fruit picking, summer fairs, trips to major caravan and leisure shows, country walks, wine making, photography and a host of games and competitions for all the family.

Perhaps more importantly however, when you become a Lunar Owner's Club member you join a big happy family made up of new friends just like you who share a real interest in the freedom of luxurious, lightweight touring at its very best.

LUNAR
WE PUT YOU FIRST

Lunar Caravans Limited

Sherdley Road • Lostock Hall
Preston • Lancashire • PR5 5JF

Telephone: 01772 337628

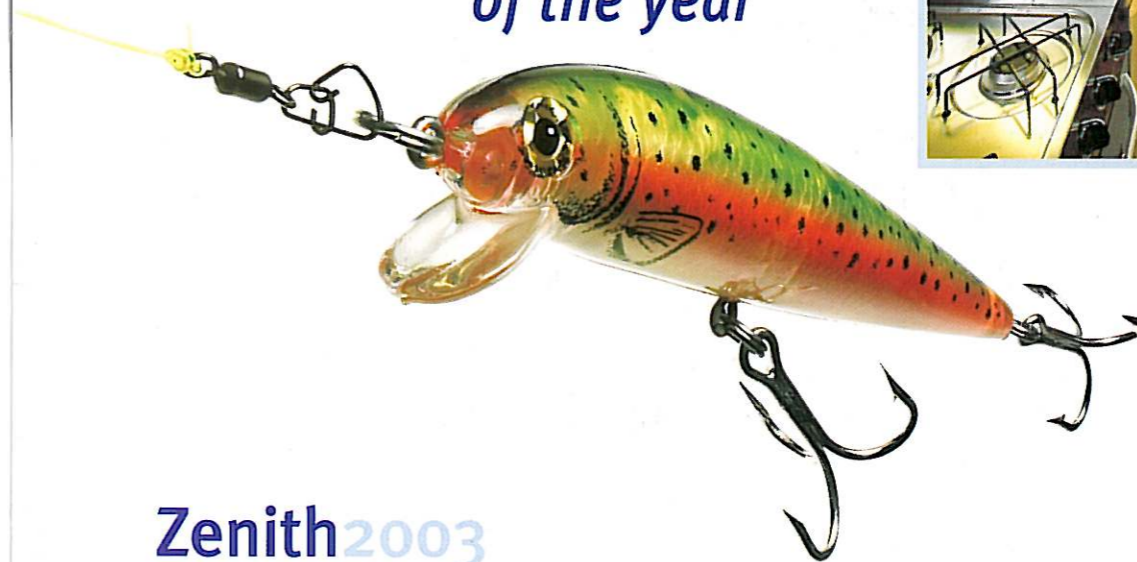
Facsimile: 01772 627722

Website: www.lunarcaravans.com

The contents of this brochure are as accurate as possible at the time of going to print (August 2002). Lunar Caravans Ltd reserve the right to alter materials, specifications, price and model ranges as conditions demand. This brochure does not constitute an offer. ©2002 Lunar Caravans Ltd.



The best
CATCH
of the year



Zenith2003

Renowned for their exceptional build quality and attention to detail, the question was clear... Could Lunar build a quality caravan that would sell for significantly less than any of its rivals?

The Zenith is the superb result of this simple question. Offering fantastic value for the whole family, these three great looking models have an excellent specification, are

on single axles for ease of towing, and come in four, five or six berth layouts.

So the answer is yes! In fact the Zenith costs several hundred pounds less than similar competitor's designs, representing fantastic family value.

But, you'll have to hurry to hook one – before they get away.

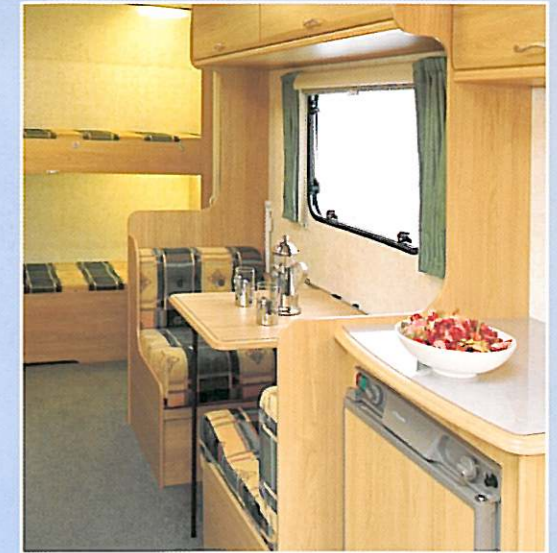
LUNAR
WE PUT YOU FIRST

Zenith Features

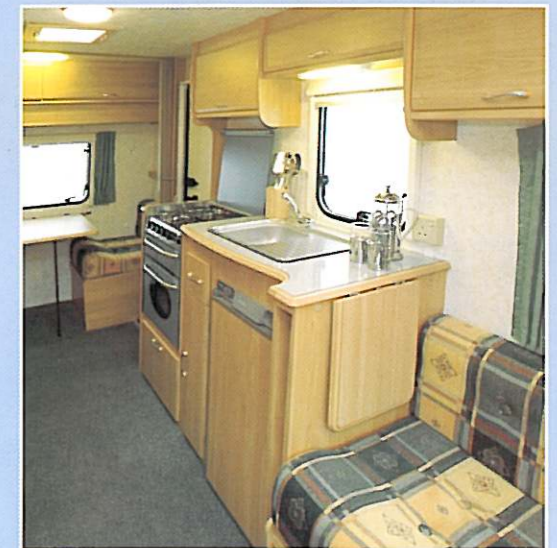
- Roll-out slats for double bed make-up
- 2 bolster cushions
- Truma gas room heater
- Truma gas and electric water heater, plumbed to both kitchen and washroom
- Smoke alarm
- One key number to suit all locks
- CRIS identity etched onto windows
- Hidden identity tag
- Isolation taps for gas appliances
- Rugged furniture hinges and handles
- Colour co-ordinated mains sockets (minimum of 2)
- 20 metre mains connection lead
- Adjustable 12v spot reading lights
- 12v charger/mains transformer
- Mains inlet with ELCB protection
- Aircraft style roof lockers
- Table storage
- Colour co-ordinated fittings, including ceiling lights, switches etc.
- Easily erected bunk arrangement for side and end berth models
- Long front lounge seats (6'2"/1.88m)
- Al-Ko galvanised steel chassis
- Separate entrance step
- External battery locker with easy-fit connectors
- High gloss aluminium
- Gas bottle storage with wheel brace and steady winder
- Pressurised water system with semi-rigid piping
- Colour matched 'Marcus' embossed ceiling and wall board
- Fully insulated walls, floor and ceiling to Grade II classification
- Upgrade for larger payload in the Zenith Four and Five (up to 1300kg MTPLM)
- Fitted cassette toilet
- Large window in washroom
- Silver blue 'Monaco' bathroom wallboard
- Blinds and flyscreens to all windows
- Two-part exterior door with top half flyscreen
- 4 burner hob, grill and oven with flame failure device
- Electrolux fridge with freezer compartment

Optional Value package

- Large Remis tilt and slide sunroof
- Mains electric and ducted blown air heating
- Full length flyscreen to door
- Spare Wheel
- Awning Light



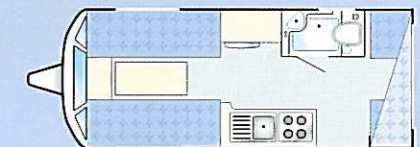
Zenith Six



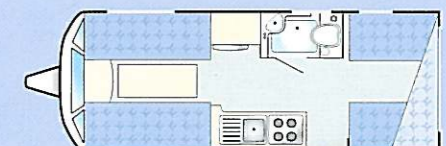
Zenith Four

Zenith Specifications

Model	Zenith Four	Zenith Five	Zenith Six	
Internal body length	4.63m/15'3"	5.30m/17'5"	5.79m/19'0"	
Overall length	6.10m/20'0"	6.82m/22'4"	7.26m/23'9"	
Internal body width	2.04m/6'8"	2.04m/6'8"	2.04m/6'8"	
Overall width	2.16m/7'1"	2.16m/7'1"	2.16m/7'1"	
Maximum internal height	1.90m/6'3"	1.90m/6'3"	1.90m/6'3"	
Overall height	2.48m/8'1"	2.48m/8'1"	2.48m/8'1"	
Tyre size	175 R13 94	175 R13 94	175 R13 94	
Coupling height	440mm/17"	440mm/17"	440mm/17"	
Mass in running order	880 kg	940 kg (est.)	990 kg	
Total user payload	220 kg	240 kg	310 kg	
MTPLM	1100 kg	1180 kg	1300 kg	
Bed sizes	Double	2.01m x 1.48m 6'7" x 4'10"	2.01m x 1.48m 6'7" x 4'10"	2.01m x 1.48m 6'7" x 4'10"
	or	or	or	
	2x Single	1.88m x 0.69m 6'2" x 2'3"	1.88m x 0.69m 6'2" x 2'3"	2x 1.88m x 0.69m 6'2" x 2'3"
	Side Single			1.83m x 0.65m 6'0" x 2'1"
	Side Bunk (Top)			1.76m x 0.57m 5'10" x 1'11"
	Rear Single/Double	2.01m x 0.62m 6'7" x 2'0"	2.01m x 1.29m 6'7" x 4'3"	2.04m x 0.61m 6'8" x 2'0"
	Rear Bunk (Top)	1.98m x 0.53m 6'6" x 1'9"	1.98m x 0.56m 6'6" x 1'10"	2.04m x 0.58m 6'8" x 1'11"
Awning guide (check with supplier)	875 cm	950 cm	1000 cm	



Zenith Four, 4 berth



Zenith Five, 5 berth



Zenith Six, 6 berth

LUNAR

WE PUT YOU FIRST

Lunar Caravans Ltd • Sherdley Road • Lostock Hall • Preston • Lancashire • PR5 5JF • Tel: 01772 337628 • www.lunarcaravans.com

The contents of this brochure are as accurate as possible at the time of going to print. Lunar Caravans Limited reserve the right to alter materials, specifications, price and model ranges as conditions demand. This brochure does not constitute an offer.
©2003 Lunar Caravans Limited. □ Designed and produced by Creative Marketing Solutions T 015242 63820.