

Swift Caravans



Swift Caravans

Swift Caravans are the result of more than three decades of quality and innovation that has earned Swift the distinction of being revered as the thoroughbred of the touring caravan world.



Swift designers and craftsmen constantly explore new ways to upgrade existing models and develop exciting new layouts, resulting in an enviable collection of desirable tourers.

The Conqueror, Challenger and redesigned Charisma range all display the loving care and attention to detail that makes Swift the setter of standards and winner of countless awards. For 2003, all models come with an AKS 2004 AL-KO stabiliser as standard, which ensures balanced driving dynamics for safe, comfortable towing.

Quality with style has been Swift's motto for many years.

Investment in advanced computer technology ensures that all models are produced to the same uncompromising quality, whilst computer aided design (CAD) allows designers to consider every improvement possible before a prototype is even produced.

Such technology automatically checks safety and stability variances at blueprint stage. Even so, Swift engineers conduct countless rigorous manual tests in their search for perfection. This commitment ensures that all models comply with the latest European legislation and has earned Swift the prestigious ISO 9001 certificate in recognition of their quality systems.

An ultra modern manufacturing facility, involving computer numerically controlled (CNC) machines, state-of-the-art CAD (computer aided design) and CAM (computer aided manufacture) facilities enables Swift to produce engineering standards of accuracy in furniture construction, a unique system giving dual benefits of the finest quality finish and rigid build quality.

Total customer satisfaction is top priority at Swift, and the quality ethos extends to the Supercare aftersales service, and SuperSure's manufacturer's 3 year warranty that come with every new Swift tourer. Everything is provided to ensure you have a relaxing holiday - the Swift way.

Swift has an active Owners Club open to all purchasers of a Swift tourer. Full details can be found by logging on to www.swift-owners-club.co.uk

Swift Charisma

The Charisma range enjoys a totally new look with eight inspiring models including an exciting new layout - the 4-berth 565 - with a spacious end washroom and comfortable L-shaped front seating.

Every aspect has been thoughtfully designed and planned. New interior front lockers add to the storage facilities, whilst a redesigned washroom offers easy access fitted shelving, neatly tucked behind a hinged mirror. The 550 layout also benefits from longer front seating and an additional Heki rooflight over the fixed bed.

The latest modern appliances, including an electronic ignition fridge and dual fuel hob with 800 watt electric hotplate for clean, instant heating on site, complete the kitchen's smart new look.

With the finishing touch of vibrant soft furnishings in patterned burgundy chenille combined with gold twin track curtains for improved hang and Italian designed furniture in Korsica apple the Charisma is designed to appeal at a very attractive price.



Charisma 565



Charisma 550



Charisma 550



Charisma 220







Challenger 520

Swift Challenger

Luxury meets affordability in the best selling Challenger range. Swift have retained the simple, classic style of the Challenger and created a range of 9 models that are literally brimming with innovation and useful features.

A new barbecue point, polished alloy wheels and flush fitting awning light heighten the exterior specification. Inside a powerful Omnivent three speed fan and skylight adds superior ventilation whilst a new dual fuel hob featuring an 800w electric hotplate provides instant clean cooking heat.

Airy, light and spacious the revised 4-berth 500 model boasts longer front beds and an additional panoramic Heki roof light over the fixed bed to watch the stars at night.

Italian designer furniture, with contemporary curves, hardwood edges and contrasting mouldings in warm Cherry Wave, complements the deluxe two-tone 'Vivaldi' upholstery. Silver sand detail running through the locker handles, coat hooks, spotlights, switch fascias and luxury washrooms, finishes the carefully co-ordinated look.



Challenger 550



Challenger 480



Challenger 530





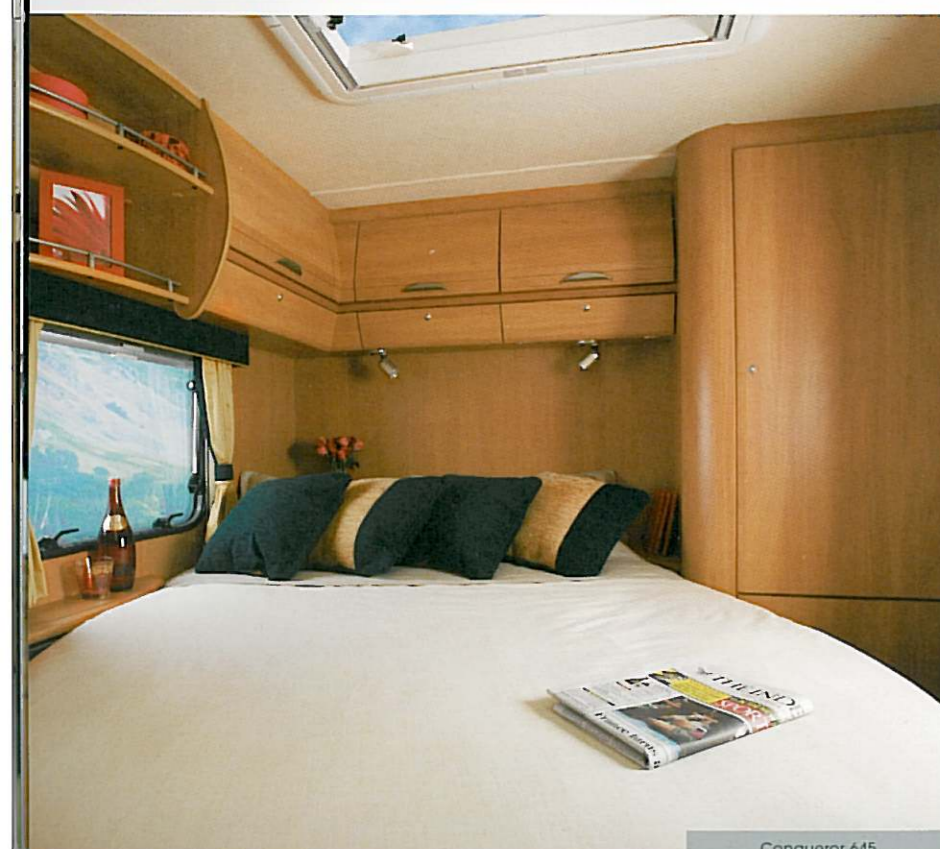
Swift Conqueror

Synonymous with impressive style and high standards, the twin-axle Conqueror abounds in luxury features and benefits from innovative design features to maximise the vast interior space.

Comfortable and relaxed, carefully co-ordinated interiors present optimum style and quality with meticulous attention to detail. Fixed end rear bed, front L-shaped seating, exceptionally spacious side dinette, luxury end washroom - there is a layout to suit you.

Packed with features including a new dual fuel hob, 86 litre fridge, Omnivent extractor fan, 12v halogen ceiling lights, built in water tank, 2 Heki roof lights in fixed bed models and an external barbecue point for alfresco cooking, the Conqueror leads the way in twin axle comfort.

To keep your investment safe and secure a sophisticated new remote control alarm system with passive infra-red and tilt sensors is activated by a simple key fob and offers added protection against theft.





Swift washrooms



Challenger 530



Charisma 560



SB washroom

Charisma 230, 235, 560, 565
Challenger 460, 480, 520, 530
Conqueror 580 SAL, 580 LUX

Standard washroom/ shower room

Charisma 220, 540, 545

Luxury washroom/ shower room

Challenger 400, 490, 490L
Conqueror 640 LUX, 640 SAL, 650 LUX

En Suite washroom

(Layout may vary slightly)
Charisma 550
Challenger 500

Luxury washroom and separate sealed shower

Conqueror 645 LUX

Washroom with separate shower

Challenger 550
Conqueror 610LUX

End luxury washroom

Conqueror 630 LUX

Note: See individual floor plans for exact layout



Charisma 540

Swift seating options

Parallel front

Available in:
Charisma 220, 230, 540, 545, 550, 560
Challenger 400, 480, 490L, 500, 530, 550
Conqueror 580 LUX, 610 LUX, 630 LUX,
640 LUX, 645 LUX, 650 LUX

L Shape front with larger offside picture window

Available in:
Charisma 235, 565
Challenger 460, 490, 520
Conqueror 580 SAL, 640 SAL

Parallel rear

Available in:
Charisma 545
Challenger 490
Conqueror 640 LUX, 640 SAL

L Shape rear

Available in:
Charisma 540
Challenger 490L
Conqueror 610 LUX

Fixed bed

Available in:
Charisma 550
Challenger 500, 550
Conqueror 630 LUX, 645 LUX

Note: See individual floor plans for exact layout



Challenger 520



Charisma 550



Challenger 550

Charisma features

EXTERIOR

New for 2003

- New exterior graphics scheme
- Lined external access locker (model specific)
- Removable fridge vents with integral fly mesh for easy maintenance and inspection
- 14" wheels with trims
- ABS rear lower panel with wrap round rear light clusters
- AL-KO lightweight galvanised steel chassis with Euro-Axle
- Awning channel on both sides of caravan
- Awning light
- Double glazed opening windows with concealed fixings

- Spare wheel and gas bottle storage with gas strut supported door
- Exterior access battery box with mains inlet (battery not included)
- Exterior door with window and blind
- Fixing points for rear mounted cycle rack (model specific)
- GRP front panel with 3 opening windows
- Heki large tilting panoramic roof window with flynet and blind (2 in 550)
- High level brake light
- High level side marker lights
- Quick release door retainer
- Smooth aluminium single joint side panels
- Reversing light
- Status TV/FM aerial and booster
- Gas strut assisted handbrake

LOUNGE/DINING AREA

New for 2003

- Cantilever hinged bed tops resized for easier access
- Clock
- Curtains with tie-backs and contrasting pelmets
- 'Masai' chenille upholstery fabric
- Drop down front side bed flaps
- Rolled edged ash/hardwood mouldings to worktops and tables
- Italian designed lightweight aircraft style upper locker doors
- Super quality domestic style sprung seats and backrests
- Front roof lockers
- Front ventilation boards
- Improved side dinette table (560 & 565)
- Twin curtain tracks for improved hanging presentation and ease of use
- Chest of drawers with occasional table (model specific)
- Cocktail cabinet
- Curtain storage for centre dinette curtain (model specific)
- Freestanding table with dedicated storage location
- Long front beds 1920mm (6'3"½") (model specific)
- Split front base cushions for easy bed make up

- Scatter cushions
- Korsica Apple colour furniture with co-ordinated handles
- Large 'L' shaped front lounge (model specific)
- Luxury fitted carpet
- Worktop laminate in Maple woodgrain

BODY STRUCTURE

- 25mm bonded side walls with polystyrene insulation core
- 32mm semi bonded roof with polystyrene core
- 44mm bonded floor with styrofoam insulation core

FITTINGS AND EQUIPMENT

New for 2003

- Removable entrance mat
- Smooth operation steel drawer runners
- Bunk ladder (where bunks provided)
- Caravan entrance step
- Cassette flyscreen & blinds to all windows
- Concealed metal wall plates for secure furniture fixing
- Domestic style cabinet hinges
- Full height exterior door flyscreen
- Isolation taps to all gas appliances
- Multi directional roof lights with sliding blind and flynet
- Night latch ventilation to all windows
- Pull out roller slatted beds
- Smoke alarm
- Wooden partition doors to rear bedroom models (model specific)

KITCHEN

New for 2003

- Chrome finish concealed micro switch tap
- L shape kitchen with swivel TV facility incorporating drop down extendable work surface (550)
- Dual fuel hob with 800w electric hot plate and three gas burners incorporating flame failure protection
- Improved kitchen locker storage with new landscape window (model specific)
- Moulded cutlery drawer on smooth steel runners
- 77 litre fridge with full width freezer and electronic ignition
- Extended work surface in kitchen (model specific)
- Flush fitting Champagne bowl and drainer with toughened glass lid
- Heat resistant work surface
- Safety hob lid with cut out feature
- Flush fitting Champagne thermostatic oven with grill and pan storage

WASHROOM

New for 2003

- Access to wardrobe shelving from vanity mirror door (model specific)
- Improved design hinged door to allow see through vision (model specific)

- Large vanity bowl (model specific)
- Pelmet with light and shelf (model specific)
- Microswitched chrome finish lever mixer tap
- Chrome finish shower equipment
- Fully fitted luxury washroom with sealed shower cubicle (model specific)
- Fully fitted luxury washroom with vanity unit and curtained shower area (model specific)
- Large window in centre washrooms (model specific)
- Theford cassette toilet with independent tank and manual flush

HEATING AND PLUMBING

- Dual fuel 3kw gas space heater complete with 2kw electric ducted blown air heating
- Dual fuel gas and mains electric storage water heater (model specific)
- Grade 2 classification for thermal heating and insulation
- Inboard semi-rigid piped fresh water system
- Large bore underslung rigid waste pipes

ELECTRICAL

New for 2003

- Colour co-ordinated Ellipse kitchen light
- 12 amp switchmode charger/transformer
- 12v electrical system with one 12v socket and plug
- Colour co-ordinated 12v halogen ceiling lights
- 25 metre mains hook-up lead
- Colour co-ordinated adjustable 12v halogen reading lights
- Colour co-ordinated halogen lighting in washroom
- Colour co-ordinated mains lights
- Electrical 12v distribution panel
- Fully protected mains electric system with two 230v mains sockets
- TV station with 230v/12v sockets and coax/aerial connection

SECURITY & SAFETY

New for 2003

- AKS 2004 AL-KO stabiliser
- All models comply with European standards
- Concealed security data chip within caravan construction
- Single key operated locks
- Identity number etched to windows and caravan chassis



Challenger features

EXTERIOR

New for 2003

- 14" polished alloy wheels
- Barbecue point
- GRP back panel incorporating high level spoiler, high level brake light and wrap round rear light cluster
- AL-KO lightweight galvanised steel chassis with Euro-Axle
- Awning channel on both sides of caravan
- Flush fitting awning light
- Double glazed opening windows with concealed fixings
- Spare wheel and gas bottle storage with gas strut supported door
- Exterior access battery box with mains inlet and aerial input socket (battery not included)
- External access door under fixed bed (500 & 550)
- External access heated locker (model specific)
- External gas bottle compartment light
- Exterior door with window, blind and moulded interior door liner with integral magazine storage
- Fixing points for rear mounted cycle rack (model specific)
- GRP front panel with 3 opening windows
- Heki large tilting panoramic roof window with flynet and blind (2 in 500)
- High level side marker lights
- Lined external access locker with 230v external socket
- Quick release door retainer
- Removable fridge vents for easy maintenance and inspection
- Smooth aluminium single joint side panels
- Reversing light
- Side direction indicator repeater lights
- Status TV/FM aerial and booster
- Gas strut assisted handbrake

LOUNGE/DINING AREA

New for 2003

- Cantilever hinged bed tops re-sized for easier access
- Chest of drawers with occasional table (model specific)
- Backrest ventilation boards
- Clock
- Cocktail cabinet with courtesy light
- Curtain storage for centre dinette curtain (model specific)
- Curtains with tie-backs and contrasting pelmets
- Scatter cushions
- Split front base cushions for easy bed make up
- 'Vivaldi' upholstery fabric
- Drop down front side bed flaps
- Rolled edged ash/hardwood mouldings to worktops and tables
- Italian designed aircraft style upper locker doors
- Super quality domestic style sprung seats and backrests
- Freestanding table with dedicated storage location
- Long front beds 1920mm (6'3½") (model specific)

- Front roof lockers
- Korsica Apple colour furniture with co-ordinated handles
- Large 'L' shaped front lounge (model specific)
- Luxury fitted carpet
- Twin curtain tracks for improved hanging presentation and ease of use
- Worktop laminate in Maple woodgrain

BODY STRUCTURE

- 25mm bonded side walls with polystyrene insulation core
- 32mm semi bonded roof with polystyrene core
- 44mm bonded floor with styrofoam insulation core

FITTINGS AND EQUIPMENT

- Bunk ladder (where bunks provided)
- Caravan entrance step
- Cassette flyscreen & blinds to all windows
- Concealed metal wall plates for secure furniture fixing
- Domestic style cabinet hinges
- Entrance mat with embroidered logo in brush out tray
- Full height exterior door flyscreen
- Isolation taps to all gas appliances
- Multi directional roof lights with sliding blind and flynet
- Night latch ventilation to all windows
- Pull out roller slatted beds
- Removable hanging rail in shower (model specific)
- Smoke alarm
- Smooth operation steel drawer runners
- Wooden partition doors to rear bedroom models (model specific)

KITCHEN

New for 2003

- Dual fuel hob with 800w electric hot plate, three gas burners and electronic ignition incorporating flame failure protection
- Flush fitting Champagne thermostatic oven with grill and pan storage
- Chrome finish concealed micro switch tap
- 77 litre electronic power fridge
- Extended work surface in kitchen (model specific)
- Utensil rack and pan stand (model specific)
- Flush fitting Champagne bowl and drainer with integral bowl, strainer compartment
- L shaped kitchen with swivel TV facility and sliding room divider storage unit (500)
- Heat resistant work surface
- Moulded cutlery drawer on smooth steel runners
- Pull out chopping board (model specific)
- Pull out storage baskets (model specific)
- Safety hob lid with cut out feature
- Towel rail on fridge door

WASHROOM

- Access to wardrobe shelving from vanity mirror door (model specific)
- Chrome finish shower equipment
- Fully fitted luxury washroom with sealed shower cubicle (model specific)
- Fully fitted luxury washroom with vanity unit and curtained shower area (model specific)
- Large vanity bowl (model specific)
- Large window in centre washrooms (model specific)
- Microswitched chrome finish lever mixer tap
- Theford cassette toilet with independent tank and electric flush

HEATING AND PLUMBING

- Dual fuel 3kw gas space heater complete with 2kw electric ducted blown air heating
- Dual fuel gas and mains electric storage water heater
- Grade 2 classification for thermal heating and insulation
- Inboard semi-rigid piped fresh water system
- Large bore underslung rigid waste pipes

ELECTRICAL

New for 2003

- Colour co-ordinated 12v halogen ceiling lights
- Omnivent 3 speed fan and skylight
- 12v electrical system with one 12v socket and plug
- 25 metre mains hook-up lead
- Colour co-ordinated adjustable 12v halogen reading lights
- Colour co-ordinated halogen lighting in washroom
- Colour co-ordinated downlighters in kitchen
- Colour co-ordinated mains lights
- Colour co-ordinated electrical sockets, switches and light fittings
- Electrical control panel over exterior door
- ESM 2000 power supply unit
- Fitted speakers, wiring, housing and aerial for easy fitting of a sound system
- Fully protected mains electric system with three 230v mains sockets
- TV station with 230v/12v sockets and coax/aerial connection

SECURITY & SAFETY

New for 2003

- AKS 2004 AL-KO stabiliser
- All models comply with European standards
- Concealed security data chip within caravan construction
- Single key operated locks
- Identity number etched to windows and caravan chassis

Conqueror features

EXTERIOR

- 13" alloy wheels
- GRP back panel incorporating high level spoiler, high level brake light and wrap round rear light cluster
- AL-KO lightweight galvanised steel chassis with Euro-Axle
- Awning channel on both sides of caravan
- Barbecue point
- Flush fitting awning light
- Double glazed opening windows with silver edges and concealed fixings
- Spare wheel and gas bottle storage with gas strut supported door
- Exterior access battery box with mains inlet and aerial input socket (battery not included)
- External access door under fixed bed (630 & 645)
- External access heated locker (model specific)
- External gas bottle compartment light
- Exterior door with window, blind and moulded interior door liner with integral magazine storage
- Fixing points for rear mounted cycle rack (model specific)
- GRP front panel with 3 opening windows
- Heki large tilting panoramic roof window with flynet and blind (2 in 630 & 645)
- High level side marker lights
- Heavy duty corner steadies
- Lined external access locker with 230v external socket
- Quick release door retainer
- Removable fridge vents for easy maintenance and inspection
- Smooth aluminium single joint side panels
- Reversing light
- Side direction indicator repeater lights
- Status TV/FM aerial and booster
- Gas strut assisted handbrake

Lounge and Dining Room

- Cantilever hinged action bed top with beech sprung slats
- Chest of drawers with occasional table (model specific)
- Backrest ventilation boards
- Clock
- Cocktail cabinet with courtesy light
- Curtain storage for centre dinette curtain (MS)
- Curtains with tie-backs and contrasting pelmets
- Scatter cushions
- Split front base cushions for easy bed make up
- 'Ellington' chenille upholstery fabric
- Drop down front side bed flaps
- Rolled edged ash/hardwood mouldings to worktops and tables
- Italian designed aircraft style upper locker doors
- Super quality domestic style sprung seats and backrests
- Freestanding table with dedicated storage location
- Long front beds 1920mm (6'3½") (model specific)
- Front roof lockers

- Korsica Apple colour furniture with co-ordinated handles
- Large 'L' shaped front lounge (model specific)
- Luxury fitted carpet
- Optional 6 berth layout (650)
- Twin curtain tracks for improved hanging presentation and ease of use
- Worktop laminate in Maple woodgrain

Body Structure

- 25mm bonded side walls with polystyrene insulation core
- 32mm semi bonded roof with polystyrene core
- 44mm bonded floor with styrofoam insulation core

Fittings and Equipment

- AL-KO side mounted scissor jack
- Bunk ladder (where bunks provided)
- Caravan entrance step
- Cassette flyscreen and blinds to all windows
- Concealed metal wall plates for secure furniture fixing
- Domestic style cabinet hinges
- Entrance mat with embroidered logo in brush out tray
- Full height exterior door flyscreen
- Isolation taps to all gas appliances
- Multi directional roof lights with sliding blind and flynet
- Night latch ventilation to all windows
- Portable wheeled waste water container
- Pull out roller slatted beds
- Removable hanging rail in shower (model specific)
- Smoke alarm
- Smooth operation steel drawer runners
- Spare wheel and tyre
- Wooden partition doors to rear bedroom models (model specific)

Kitchen

New for 2003

- Dual fuel hob with 800w electric hot plate, three gas burners and electronic ignition incorporating flame failure protection
- Flush fitting Champagne thermostatic oven with grill and pan storage
- Chrome finish concealed micro switch tap
- 86 litre electronic power fridge
- Extended work surface in kitchen
- Utensil rack and pan stand (model specific)
- Flush fitting Champagne bowl and drainer with integral bowl, strainer compartment
- L shaped kitchen with swivel TV facility and sliding room divider storage unit (630)
- Heat resistant work surface
- Moulded cutlery drawer on smooth steel runners
- Multi purpose tambour door locker with provision for microwave (model specific)
- Pull out chopping board (model specific)
- Pull out storage baskets (model specific)
- Safety hob lid with cut out feature
- Towel rail on fridge door

Washroom

- Access to wardrobe shelving from vanity mirror door (580)
- Airing cupboard (630)
- Chrome finish shower equipment
- Fully fitted luxury washroom with sealed shower cubicle (model specific)
- Fully fitted luxury washroom with vanity unit and curtained shower area (model specific)
- Large vanity bowl (model specific)
- Large window in centre washrooms (model specific)
- Microswitched chrome finish lever mixer tap
- Theford cassette toilet with independent tank and electric flush

Heating and Plumbing

- Dual fuel 3kw gas space heater complete with 2kw electric ducted blown air heating
- Dual fuel gas and mains electric storage water heater
- Grade 2 classification for thermal heating and insulation
- Inboard semi-rigid piped fresh water system
- Internal 9 gallon water tank with filling pump and level gauge
- Large bore underslung rigid waste pipes

Electrical

New for 2003

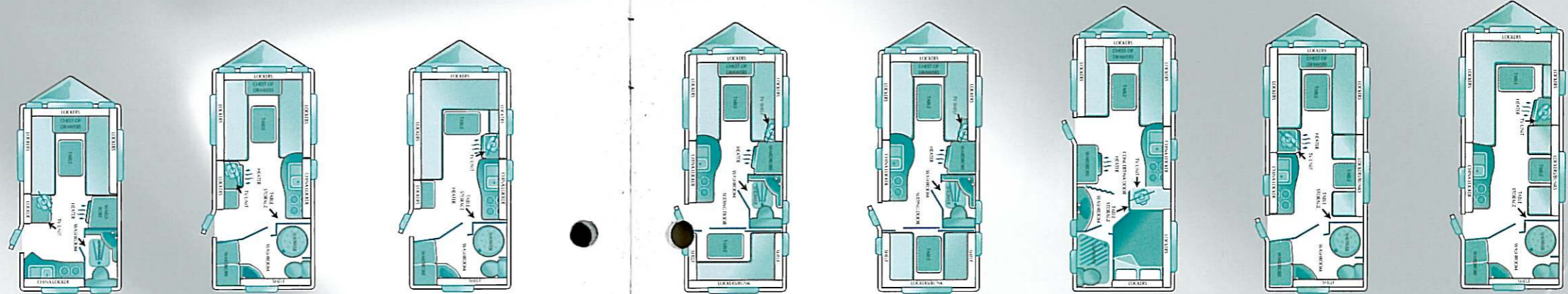
- Colour co-ordinated 12v halogen ceiling lights
- 12v electrical system with one 12v socket and plug (2 in 610, 640 & 650)
- 25 metre mains hook-up lead
- Colour co-ordinated adjustable 12v halogen reading lights
- Colour co-ordinated halogen lighting in washroom
- Colour co-ordinated downlighters in kitchen
- Colour co-ordinated mains lights
- Colour co-ordinated electrical sockets, switches and light fittings
- Electrical control panel over exterior door
- ESM 2000 power supply unit incorporating 12 amp switchmode charger/transformer
- Fitted speakers, wiring, housing and aerial for easy fitting of a sound system
- Fully protected mains electric system with four 230v mains sockets and 1 external
- Omnivent 3 speed fan and skylight
- TV station with 230v/12v sockets and coax/aerial connection (2 in 610, 640 & 650)

Security & Safety

New for 2003

- AKS 2004 AL-KO stabiliser
- Alarm system with passive infra red tilt sensor and easy to use key fob operation
- All models comply with European standards
- Concealed security data chip within caravan construction
- Single key operated locks
- Identity number etched to windows and caravan chassis
- Lockable rear corner steadies (lock not supplied)

Charisma specifications



Model	220	230	235	540	545	550	560	565
Berths	2	2	2	5	5	4	4	4
Internal Length (At bed box height)	3.94m/12'11"	4.61m/15'2"	4.61m/15'2"	5.03m/16'6"	5.03m/16'6"	5.39m/17'8"	5.23m/17'2"	5.23m/17'2"
Overall Width	2.16m/7'1"	2.16m/7'1"	2.16m/7'1"	2.16m/7'1"	2.16m/7'1"	2.23m/7'4"	2.16m/7'1"	2.16m/7'1"
Overall Height (Including TV aerial)	2.76m/9'1"	2.76m/9'1"	2.76m/9'1"	2.76m/9'1"	2.76m/9'1"	2.76m/9'1"	2.76m/9'1"	2.76m/9'1"
Overall Length	5.53m/18'2"	6.21m/20'4"	6.21m/20'4"	6.62m/21'9"	6.62m/21'9"	6.99m/22'11"	6.83m/22'5"	6.83m/22'5"
Awning A/A Dimension	8.17m/26'9"	8.84m/29'0"	8.84m/29'0"	9.26m/30'4"	9.26m/30'4"	9.62m/31'7"	9.46m/31'0"	9.46m/31'0"
Tyre Size	195/70 r14 91	195/70 r14 91	195/70 r14 91	195/70r14 95	195/70r14 95	175r14 99	175r14 99	175r14 99

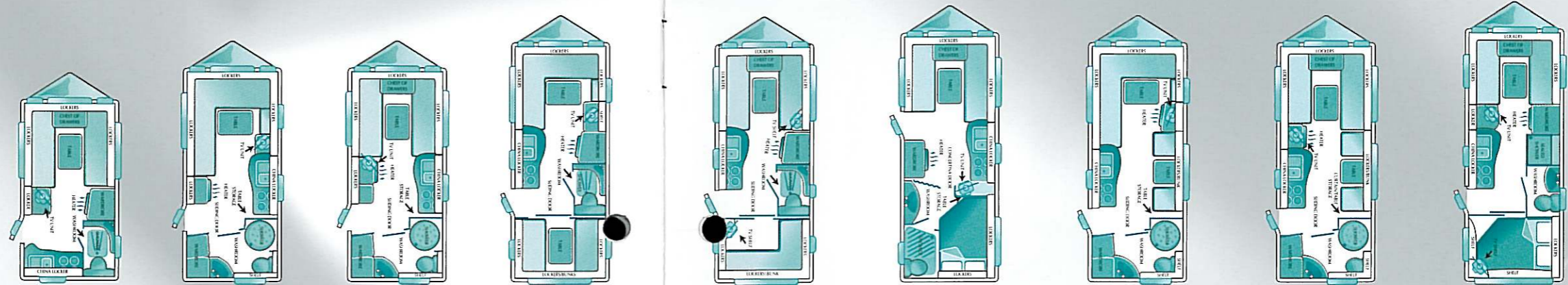
bed sizes

Front Double†	204cm x 190cm/6'8" x 6'3"	204cm x 190cm/6'8" x 6'3"	204cm x 139cm/6'8" x 4'7"	204cm x 190cm/6'8" x 6'3"	204cm x 190cm/6'8" x 6'3"	208cm x 167cm/6'10" x 5'6"	204cm x 180cm/6'8" x 5'11"	204cm x 139cm/6'8" x 4'7"
or One Single	190cm x 67cm/6'3" x 2'2"	190cm x 67cm/6'3" x 2'2"	190cm x 67cm/6'3" x 2'2"	190cm x 67cm/6'3" x 2'2"	190cm x 67cm/6'3" x 2'2"	190cm x 71cm/6'3" x 2'4"	190cm x 67cm/6'3" x 2'2"	190cm x 67cm/6'3" x 2'2"
and One Single	190cm x 67cm/6'3" x 2'2"	190cm x 67cm/6'3" x 2'2"	190cm x 71cm/6'3" x 2'4"	190cm x 67cm/6'3" x 2'2"	190cm x 67cm/6'3" x 2'2"	167cm x 71cm/5'6" x 2'4"	180cm x 67cm/5'11" x 2'2"	190cm x 71cm/6'3" x 2'4"
Rear Double				204cm x 119cm/6'8" x 3'11"	204cm x 119cm/6'8" x 3'11"	198cm x 138cm/6'6" x 4'6"		
Rear Bunk				198cm x 56cm/6'6" x 1'10"	198cm x 56cm/6'6" x 1'10"			
Side Single							180cm x 66cm/5'11" x 2'2"	180cm x 66cm/5'11" x 2'2"
Side Bunk							178cm x 56cm/5'10" x 1'10"	178cm x 56cm/5'10" x 1'10"

†Double bed size is quoted with wrap round seating.

Note: Please see separate loose insert for caravan weights.

Challenger specifications



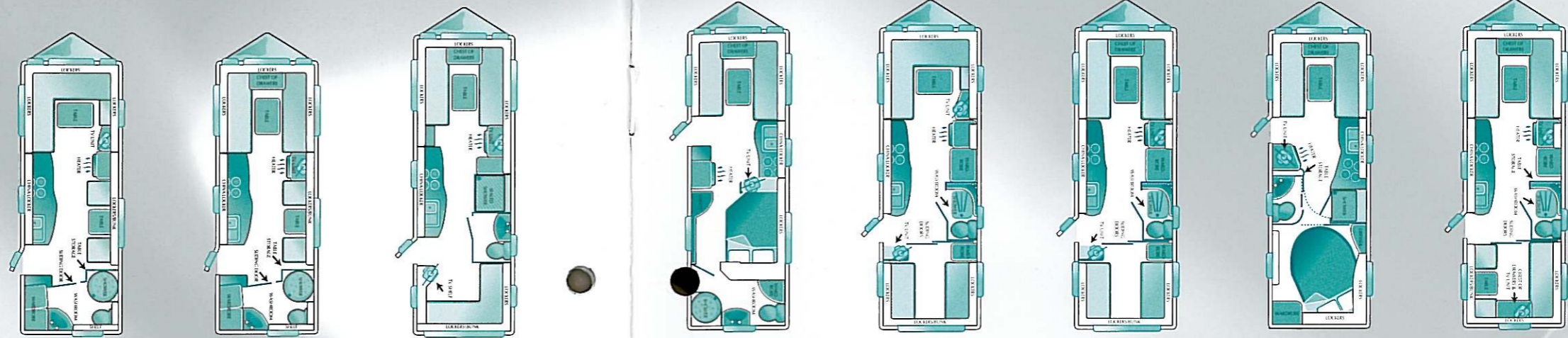
Model	400	460	480	490	490L	500	520	530	550
Berths	2	2	2	5	5	4	4	4	4
Internal Length (At bed box height)	3.94m/12'11"	4.61m/15'2"	4.61m/15'2"	5.23m/17'2"	5.23m/17'2"	5.39m/17'8"	5.23m/17'2"	5.23m/17'2"	5.50m/18'1"
Overall Width	2.16m/7'1"	2.16m/7'1"	2.16m/7'1"	2.16m/7'1"	2.16m/7'1"	2.23m/7'4"	2.16m/7'1"	2.16m/7'1"	2.23m/7'4"
Overall Height (Including TV aerial)	2.76m/9'1"	2.76m/9'1"	2.76m/9'1"	2.76m/9'1"	2.76m/9'1"	2.76m/9'1"	2.76m/9'1"	2.76m/9'1"	2.76m/9'1"
Overall Length	5.52m/18'1"	6.20m/20'4"	6.20m/20'4"	6.81m/22'4"	6.81m/22'4"	6.98m/22'11"	6.81m/22'4"	6.81m/22'4"	7.09m/23'3"
Awning A/A Dimension	8.17m/26'9"	8.84m/29'0"	8.84m/29'0"	9.46m/31'0"	9.46m/31'0"	9.62m/31'7"	9.46m/31'0"	9.46m/31'0"	9.73m/31'11"
Tyre Size	195/70r14 91	195/70r14 95	195/70r14 95	175r14 99	175r14 99	175r14 99	175r14 99	175r14 99	175r14 99

bed sizes

Front Double†	204cm x 190cm/6'8" x 6'3"	204cm x 139cm/6'8" x 4'7"	204cm x 190cm/6'8" x 6'3"	204cm x 137cm/6'8" x 4'6"	204cm x 190cm/6'8" x 6'3"	208cm x 167cm/6'10" x 5'6"	204cm x 139cm/6'8" x 4'7"	204cm x 180cm/6'8" x 5'11"	208cm x 158cm/6'10" x 5'2"
or One Single	190cm x 67cm/6'3" x 2'2"	190cm x 67cm/6'3" x 2'2"	190cm x 67cm/6'3" x 2'2"		190cm x 67cm/6'3" x 2'2"	190cm x 71cm/6'3" x 2'4"	190cm x 67cm/6'3" x 2'2"	190cm x 67cm/6'3" x 2'2"	
and One Single	190cm x 67cm/6'3" x 2'2"	190cm x 71cm/6'3" x 2'4"	190cm x 67cm/6'3" x 2'2"		190cm x 67cm/6'3" x 2'2"	167cm x 71cm/5'6" x 2'4"	190cm x 71cm/6'3" x 2'4"	180cm x 67cm/5'11" x 2'2"	
Rear Double				204cm x 132cm/6'8" x 4'4"	188cm x 132cm/6'2" x 4'4"	198cm x 138cm/6'6" x 4'6"			197cm x 137cm/6'6" x 4'6"
Rear Bunk				204cm x 58cm/6'8" x 1'11"	188cm x 58cm/6'2" x 1'11"				
Side Single							180cm x 66cm/5'11" x 2'2"	180cm x 66cm/5'11" x 2'2"	
Side Bunk							178cm x 56cm/5'10" x 1'10"	178cm x 56cm/5'10" x 1'10"	

†Double bed size is quoted with wrap round seating.
Note: Please see separate loose insert for caravan weights.

Conqueror specifications



Model	580 SAL	580 LUX	610 LUX	630 LUX	640 SAL	640 LUX	645 LUX	650 LUX
Berths	4	4	5	4	5	5	4	5 Opt 6
Axles	2	2	2	2	2	2	2	2
Internal Length (At bed box height)	5.85m/19'2"	5.85m/19'2"	6.35m/20'10"	6.35m/20'10"	6.35m/20'10"	6.35m/20'10"	6.35m/20'10"	6.35m/20'10"
Overall Width	2.23m/7'4"	2.23m/7'4"	2.23m/7'4"	2.23m/7'4"	2.23m/7'4"	2.23m/7'4"	2.23m/7'4"	2.23m/7'4"
Overall Height (Including TV aerial)	2.75m/9'0"	2.75m/9'0"	2.75m/9'0"	2.75m/9'0"	2.75m/9'0"	2.75m/9'0"	2.75m/9'0"	2.75m/9'0"
Overall Length	7.45m/24'5"	7.45m/24'5"	7.95m/26'1"	7.95m/26'1"	7.95m/26'1"	7.95m/26'1"	7.95m/26'1"	7.95m/26'1"
Awning A/A Dimension	10.00m/32'10"	10.00m/32'10"	10.50m/34'5"	10.50m/34'5"	10.50m/34'5"	10.50m/34'5"	10.50m/34'5"	10.50m/34'5"
Tyre Size	165r13 82	165r13 82	165r13 82	165r13 82	165r13 82	165r13 82	165r13 82	165r13 82

bed sizes

Front Double†	208cm x 137cm/6'8" x 4'6"	208cm x 190cm/6'8" x 6'3"	208cm x 190cm/6'8" x 6'3"	208cm x 182cm/6'8" x 5'11"	208cm x 137cm/6'8" x 4'6"	208cm x 190cm/6'8" x 6'3"	208cm x 180cm/6'8" x 5'11"	208cm x 190cm/6'8" x 6'3"
or One Single		190cm x 71cm/6'3" x 2'4"	190cm x 71cm/6'3" x 2'4"	190cm x 71cm/6'3" x 2'4"		190cm x 71cm/6'3" x 2'4"	180cm x 71cm/5'11" x 2'4"	190cm x 71cm/6'3" x 2'4"
and One Single		190cm x 71cm/6'3" x 2'4"	190cm x 71cm/6'3" x 2'4"	182cm x 71cm/6'0" x 2'4"		190cm x 71cm/6'3" x 2'4"	190cm x 71cm/6'3" x 2'4"	190cm x 71cm/6'3" x 2'4"
Rear Double			192cm x 138cm/6'4" x 4'6"	192cm x 138cm/6'4" x 4'6"	208cm x 137cm/6'8" x 4'6"	208cm x 137cm/6'8" x 4'6"	202cm x 145cm/6'6" x 4'9"	205cm x 137cm/6'9" x 4'6"
Rear Bunk			192cm x 58cm/6'4" x 1'11"		192cm x 56cm/6'4" x 1'10"	192cm x 56cm/6'4" x 1'10"		
Side Single (Offside)	180cm x 66cm/5'11" x 2'2"	180cm x 66cm/5'11" x 2'2"						177cm x 68cm/5'10" x 2'3"
Side Single (Nearside)								177cm x 68cm/5'10" x 2'3"
Side Bunk	178cm x 56cm/5'10" x 1'10"	178cm x 56cm/5'10" x 1'10"						172cm x 56cm/5'8" x 1'10"
Optional Bunk								172cm x 56cm/5'8" x 1'10"

†Double bed size is quoted with wrap round seating.

Note: Please see separate loose insert for caravan weights.

Your Local Dealer



Quality with Style



INVESTOR IN PEOPLE



NATIONAL CARAVAN
COUNCIL LIMITED

SWIFT CARAVANS, DUNSWELL ROAD, COTTINGHAM, EAST YORKSHIRE HU16 4JX.

TEL: 01482 847332 FAX: 01482 841042

e-mail: enquiry@swiftleisure.co.uk web site: www.swiftcaravans.co.uk

This brochure does not constitute an offer by Swift Group Limited (Swift). Swift reserves the right to alter specifications and prices at any time as materials and conditions demand. Distributors and dealers sell Swift products on their own account and not as agents of Swift. Accordingly, they have no authority to bind Swift or to make any representation or undertaking whatsoever on behalf of Swift.

The touring caravans described in this brochure are designated by their model year. The model year runs from 1 September to 31 August and the despatch of 2003 models will have commenced on or after 1 September 2002.

Issued September 2002

Volvo cars courtesy of Volvo Cars UK Limited.