

Lunar Caravans | 2004



**YOUR 1ST CHOICE FOR
MORE CHOICE**

- OVER 300 CARAVANS ON SHOW
- INDOOR & SEASONAL OUTDOOR CAMPING DISPLAY
- AWNING DISCOUNT CENTRE
- ACCESSORIES SUPERMARKET
- 5 STAR SERVICE CENTRE & REPAIR WORKSHOPS
- FINANCE & INSURANCE (SUBJECT TO STATUS)

**GUARANTEED A
WARM WELCOME**

HIGHBRIDGE

Caravan and Camping Centre

**OPEN 7 DAYS
A WEEK**

01278 782725

A38, BRISTOL RD, HIGHBRIDGE, SOMERSET, TA9 4EX
www.highbridgecaravans.co.uk

Welcome to Lunar 2004



Over the years Lunar has built a healthy reputation for its design and innovation, a reputation complemented by the fact that all Lunar caravans weigh considerably less, caravan for caravan, than any of our rivals.

New layouts, clever and practical improvements, improved specifications... all these are apparent and the unique lightness of all Lunar products gives them a broad appeal to old and new caravanners alike.

No other manufacturer offers such a selection of better and lighter caravans.

The 2004 ranges have five brand new models, plus a host of changes and upgrades to the specifications making them the most complete selection ever.

Amongst the new models are the Lexon CS and Lexon FB, the Delta 620-4, the Quasar EB and the Zenith Sport.

All model ranges (except the Ariva) feature long single seats to further enhance the already comfortable lounge area.

The Quasar is a new five model range, benefitting from numerous extra value features and a new fixed bunk version of the family friendly Quasar 615.

The Zenith is a range of family caravans unburdened by the weight and price of unnecessary frills, yet boasting all the essential comforts to make the best of your holidays.

The Stellar, Clubman, Lexon, and Delta all provide a selection of new, great value features.



Vegetable rack in the Clubman and Delta



Substantial bed supports



Every 2004 model has benefitted from striking new decals which complement the new Lunar corporate logo and announces the bolder, brighter, better image which is the Lunar of today.

Notice also the distinctive styling offered by our unique and exclusive, shaped side windows and the new streamlined hitch section which includes the user friendly, easy to apply handbrake.

At Lunar we are caravanners too, and our own special understanding of your needs has resulted in many practical advantages. The quality of our cabinet work is something we are particularly proud of, note for example, the roof locker and kitchen designs. The use of angles and curves creates an enormously satisfying vista and a feeling of openness and space.

Then there's the slide-to-side easy access into the bed box storage.

The tilt and slide sunroof brings extra light to the living area and assists airflow on those warm summer days.



Easy slide drawer runners in all models



Speakers in the Quasar and Lexon



The stereo CD player in Clubman and Delta models creates the right mood for relaxing in the extremely comfortable lounge, and the new lighting creates a special ambience as you settle down for the evening.

All Delta models have the remote access Concept 'Kel' security system as standard.

With the high level of standard equipment fitted throughout the different ranges, we are sure there's a Lunar caravan that will meet your needs perfectly.

As a caravanner you are bound to be weight conscious, so you will appreciate the many years of experience and development which give Lunar the edge of saving every last kilogram. By utilising materials which are light in weight yet strong in use, and by paying meticulous attention to manufacturing methods, we build caravans that are lighter than any comparable product, without sacrificing either strength or quality.



Stylish new washroom on certain models



Restyled Thetford toilet (Stellar, Lexon EB, Quasar 525, 615 and EB)

Ariva



Narrower and lighter than any of its rivals, the luxurious Ariva is totally unique in its class, offering real caravanning luxury in an easy to handle, lightweight body.

The design of the Ariva with its traditional rear-end kitchen layout gives it a surprisingly roomy feel, without compromising on storage facilities or the high specification.

The new washroom with swivel toilet provides a spacious shower room with a surprisingly large floor area.

Curved, integrated roof lockers provide ample storage space without affecting the light and roomy opulence that is so uniquely the Ariva.

Ideal for year round caravanning, the gas/electric room heater has ducted blown air for total comfort, and the large fridge with full width freezer is ideal for those little indulgences!



New for 2004

- Matching wallboard and furniture board
- Domestic style drawer runners
- Exterior door design
- Shaped side windows
- Settee style armrests
- 'A' frame cover and handbrake
- Built in gas regulator
- Graphics



Stellar



Created in response to the need for comfortable, roomy caravans that are of an easily manageable compact size, the unique layout of Lunar's award winning Stellar provides an unrivalled and invaluable level of spaciousness.

The 2.28m wide body boasts an attractive rear-offside kitchen, whilst the new cherry coloured woodwork and wallboard is complemented by beautifully styled natural wood framed roof locker doors.

Also new for 2004 is the large window in the washroom and the attractive rear roof spoiler. With an extremely high level of specification including blown air heating to the shower room, the Lunar Stellar is the ideal choice for discerning couples.

New for 2004

- Matching 'cherry' wallboard and furniture board
- Domestic style drawer runners
- Exterior door design
- Shaped side windows
- Settee style armrests
- 'A' frame cover & handbrake
- Roof spoiler with high level brake light
- Large window in washroom
- Built in gas regulator
- Graphics



Zenith



Offering fantastic value for the whole family, these four great looking models have an excellent specification, are on single axles for ease of towing and come in four, five or six berth layouts.

The Zenith appeals to all sorts of caravanners, being well equipped, not overburdened with frills, lighter than most competitors and consequently towable by a variety of standard family saloon cars.

The Zenith Sport is the latest model to join this hugely popular range. The 'garage' style storage at the rear of this 4 berth model provides opportunities for a number of sporting activities, with its toughened floor and fixing points enabling equipment to be stored easily, safely and unobtrusively.

The Zenith also comes with a great value optional package comprising a large tilt and slide sunroof, gas and electric blown air heating, full length flyscreen to door, spare wheel and awning light.

New for 2004

- Domestic style drawer runners
- Shaped side windows
- Deeper upholstery
- Spark ignition to hob
- 'A' frame cover & handbrake
- Full width curtains
- Built in gas regulator
- Graphics



Zenith Five

Quasar



Quasar 615

The Quasar is a brand new range of five models with the emphasis on more features, more value, more luxury and less weight.

The natural wood framed locker doors are enhanced by the luxurious soft furnishings and each model boasts a host of features to surprise and delight Lunar caravanners.

With a large rear washroom and dedicated shower facility, the Quasar 462 is a traditional 2 berth layout, whereas the understated style and ample locker space in the 524 and 525 models give them a special family appeal.

The Quasar EB is based on the popular fixed bed layout, within a shorter, lighter and easier to handle body. Finally the Quasar 615 has two fixed bunks opposite the side dinette seats, an ideal 'play area' for children of all ages. The roomy lounge and uncluttered kitchen and washroom areas complete this superb family caravan.

New for 2004

- Matching wallboard & furniture board
- Domestic style drawer runners
- Exterior door design
- Shaped side windows
- Settee style armrests
- 'A' frame cover & handbrake
- Omnivent extractor vent
- 'Wet locker' storage box
- External mains & BBQ point
- Built in gas regulator
- Built in speakers, aerial & radio housing
- Graphics



Quasar 462

Lexon



Wider than most other caravans, the Lexon has developed into a range of unique layouts offering designs that fully maximise the additional space.

The new Lexon CS joins the EB and ES in providing a fixed bed layout within a single axle model. The extra length and width gives these caravans something our competitors cannot match, as witnessed by the central shower configuration of the CS.

The Lexon EW with fixed bed and large rear washroom is a clear winner. However the ultimate in spacious touring luxury has to be the Lexon 640 with its large walk-round bed which provides a sense of comfortable permanence.

Finally, a newcomer is the twin axle Lexon FB, a fantastic 6 berth tourer with the benefit of fixed bunk beds and two separate seating areas, both complemented by a large rear washroom.

New for 2004

- Matching wallboard & furniture board
- Domestic style drawer runners
- Exterior door design
- Shaped side windows
- Settee style armrests
- 'A' frame cover & handbrake
- Omnivent extractor vent
- 'Wet locker' storage box
- External mains & BBQ point
- Built in gas regulator
- Built in speakers, aerial & radio housing
- Graphics



Clubman



Clubman 475 CK

The ever popular Clubman has an indefinable mix of quality and traditional appeal that has proved to be so elusive to others. This has remained the basis for the Clubman's continuing success over many years.

The new models feature beautifully matched interiors with the curved, wrap-around roof lockers complemented by the exquisitely designed cabinet work of the kitchen and dresser units.

New for 2004, the 3 models in the range benefit from the extra width of the 2.28 wide body. The unique Clubman 470 combines all the luxury of the end washroom with those of an end kitchen, whilst the 475 CK and 530-4 are hugely successful conventional layouts - now with even more room!

The eye catching Clubman decal combines with the new Lunar logo to announce the arrival of a superb range, enhanced by the fitting of alloy wheels and AKS 2004 stabiliser amongst the many features that make the Clubman so special.

New for 2004

- Matching wallboard & furniture board
- Domestic style drawer runners
- Exterior door design
- Shaped side windows
- Settee style armrests
- 'A' frame cover & handbrake
- 2.28m wide body
- Slide out vegetable rack (not 470)
- AKS 2004 stabiliser
- Alloy wheels
- Dometic 86 litre Powerfridge
- Built in gas regulator



Clubman 470-2

Delta



Delta 640 EW

The Delta is a stunningly designed range of models, with the fixed bed Delta 640 EW offering that extra touch of luxury in what is a very popular layout.

The newly designed furniture makes the most of soft curves to enhance the stylish interior layout, but as with every Lunar there is, of course, so much more...

Delta's high level of specification is designed to match the roomy interior that results from a 2.28m wide body and includes a Status multi-directional television aerial and 'Concept Kel' remote security system.

By utilising the extra width, the new Delta 620-4 offers a large rear bedroom and a large central washroom, without compromising on the freespace available in either the lounge or the galley.

All Delta models include a built-in microwave oven, stereo CD/Radio, large built-in freshwater tank and numerous other quality features.

New for 2004

- Matching wallboard & furniture board
- Domestic style drawer runners
- Exterior door design
- Shaped side windows
- Settee style armrests
- 'A' frame cover & handbrake
- Slide out vegetable rack
- AKS 2004 stabiliser
- Alloy wheels
- Dometic 86 litre Powerfridge
- Built in gas regulator
- Graphics



Delta 640 EW

Lunar Features 2004

● Fitted ○ Optional – Not available

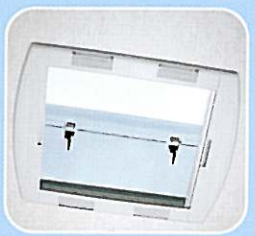
	Ariva	Stellar	Zenith	Quasar	Lexon	Clubman	Delta
Shaped 2 drawer chest with pull-out coffee table	●	●	–	●	●	●	●
Quartz clock	●	●	–	●	●	●	●
Cocktail cabinet with glass and bottle retainers	●	●	–	●	●	●	●
Lunar entrance doormat and tray	●	●	–	●	●	●	●
Roll-out slats for double bed make-up	●	●	●	●	●	●	●
Armrest (A), scatter cushions (S) and bolster cushions (B)	2xS, 2xA	2xS, 4xA	2xB	2xS, 4xA	2xS, 4xA	2xS, 4xA	2xS, 4xA
Truma gas and electric flued room heater with ducted blown air	●	●	○	●	●	●	●
Truma gas and electric water heater, plumbed to both kitchen and washroom	●	●	●	●	●	●	●
Smoke alarm	●	●	●	●	●	●	●
One key number to suit all locks	●	●	●	●	●	●	●
CRIS identity etched onto windows	●	●	●	●	●	●	●
Hidden identity tag	●	●	●	●	●	●	●
Isolation taps for gas appliances	●	●	●	●	●	●	●
New Fitted gas regulator	●	●	●	●	●	●	●
Low-level 'night time' courtesy light	–	–	–	–	–	●	●
Quality CD/radio, two speakers and CD storage rack	○	○	–	○	○	●	●
New Fitted radio housing, aerial and two speakers	○	○	–	●	●	–	–
Status TV aerial	●	●	–	●	●	–	–
Fully adjustable and directable Status 530 TV aerial	–	–	–	–	–	●	●
Courtesy entry light switch	●	●	–	●	●	●	●
Awning light	●	●	○	●	●	●	●
Colour co-ordinated mains sockets (minimum of 2)	●	●	●	●	●	●	●
20 metre mains connection lead	●	●	●	●	●	●	●
230v mains reading lights	●	●	●	●	●	●	●
Adjustable 12v spot reading lights	●	●	●	●	●	●	●
External mains socket	–	–	–	●	●	●	●
External barbecue point	–	–	–	●	●	●	●
12v charger/mains transformer	●	●	●	●	●	●	●
Mains inlet with ELCB protection	●	●	●	●	●	●	●
Omnivent 3 speed, 2 way extractor/rooflight	○	○	–	●	●	●	●
Blinds and flyscreens to all windows	●	●	●	●	●	●	●
Two part exterior door with window and blind	●	●	–	●	●	●	●
Flyscreen to exterior door	●	●	1/2	●	●	●	●
Tilt and slide sunroof	●	●	○	●	●	●	●
New Al-Ko galvanised steel chassis with one action easy handbrake	●	●	●	●	●	●	●
New AKS stabiliser	–	–	–	–	–	●	●
Separate entrance step	●	●	●	●	●	●	●
External battery locker with easy-fit connectors	●	●	●	●	●	●	●
External rear side locker compartment	○	○	–	○	○	●	●
New Alloy wheels	○	○	–	○	○	●	●
Stylish wheel trims	●	●	●	●	●	–	–
New Restyled side rear and door windows	●	●	●	●	●	●	●
New Aircraft style liner for exterior door including storage pocket	●	●	–	●	●	●	●
High gloss aluminium	●	●	●	●	●	●	●
Pressurised water system with semi-rigid piping	●	●	–	●	●	●	●
Mud flaps	–	–	–	●	●	●	●
Rear roof spoiler featuring high level brake light	–	●	–	●	●	●	●
Fully insulated walls, floor and ceiling to Grade II classification	●	●	●	●	●	●	●
Upgrade for larger payload	–	○	○	○	–	○	○
New Restyled Thetford toilet (Stellar, Lexon EB, Quasar 525, 615 and EB)	–	●	–	●	●	–	–
Shower with dedicated controls	●	●	–	–	●	●	●
On-board 60 litre water tank	–	–	–	–	–	–	●
Fitted cassette toilet with own header tank	●	●	●	●	●	●	●
Large window in washroom	●	●	●	●	●	●	●

● Fitted ○ Optional – Not available

	Ariva	Stellar	Zenith	Quasar	Lexon	Clubman	Delta
4 burner hob, grill and oven with spark ignition and flame failure device	●	●	●	●	●	●	●
Easy to use lever action tap	–	●	●	●	●	●	●
Dometic fridge with full width freezer (half freezer in Zenith)	M	M	M	E	E	–	–
New Dometic 86 litre Powerfridge with full width freezer	–	–	–	–	–	●	●
Halogen downlighters over kitchen	●	●	–	●	●	●	●
New Easy slide drawer runners	●	●	●	●	●	●	●
Fitted eye level microwave oven	–	–	–	–	–	470/475	●
Bed ventilation boards to improve airflow and reduce condensation	●	●	–	●	●	●	●
Drop-flap access to front bed box storage	●	●	–	●	●	●	●
Slide-to-side bed slats, allowing unobstructed storage access	●	●	–	●	●	●	●
'Apfel' cherry furniture board	–	●	–	–	●	–	●
New Wallboard same as the furniture board	●	●	–	●	●	●	●
New 'Brique' ceiling board	●	●	●	●	●	●	●
Stylish rear light clusters	●	●	●	●	●	●	●
Colour matched worktop laminates	●	●	●	●	●	●	●
Integrated, curved roof locker designs	●	●	–	–	●	●	●
Remote controlled 'Concept Kel' alarm system	–	–	–	–	–	–	●
Dedicated table storage locker	–	●	●	●	●	●	●
Colour co-ordinated fittings, including ceiling lights, switches etc.	●	●	●	●	●	●	●
Fixed bed models with colour co-ordinated mattress, two pillows and cases	–	–	–	●	●	–	●
Long front lounge seats (6'2"/1.88m)	–	●	not sport	not EB	●	●	●



New rear light cluster



'Heki' slide and tilt rooflight



Luxury shower has ample space for toiletries



Eye level microwave oven, a feature of all Delta models and the Clubman 470/475



Delta & Clubman have a fully adjustable TV aerial, others have a standard aerial



A feature of some Lexon and the Clubman 470 models, the external access locker



Aircraft style liner for exterior door including storage pocket



Spoiler with high level brake light featured on most models



Slide-to-side easy bed box access



Alloy Wheel



CD/Radio in Clubman and Delta



BBQ point in Clubman, Delta, Lexon and Quasar



Fitted gas regulator on all models



New hitch cover (showing AKS stabiliser fitted to Clubman and Delta)



Omnivent 3 speed, 2 way extractor in Clubman, Delta, Lexon and Quasar



Nearside locker in Clubman, Delta, Lexon and Quasar



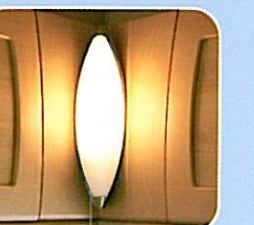
'Concept Kel' key security system in Delta



Robust hinges



External mains socket in Clubman, Delta, Lexon and Quasar



Stylish corner light

Ariva

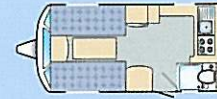
Model	Ariva	
Internal body length	3.63m/11'11"	
Overall length	5.17m/16'11"	
Internal body width	1.90m/6'3"	
Overall width	2.02m/6'7"	
Maximum internal height	1.90m/6'3"	
Overall height	2.65m/8'8"	
Tyre size	155 R13 90	
Coupling height	440mm/17"	
Mass in running order	783 kg	
Total user payload	217 kg	
MTPLM	1000 kg	
Bed sizes	Double	1.90m x 1.43m 6'3" x 4'8"
	or	
	2 x Single	1.83m x 0.66m 6'0" x 2'2"
Awning guide (check with supplier)	790 cm	



Ariva, 2 berth

Stellar

Model	Stellar	
Internal body length	4.20m/13'9"	
Overall length	5.71m/18'9"	
Internal body width	2.16m/7'1"	
Overall width	2.28m/7'6"	
Maximum internal height	1.90m/6'3"	
Overall height	2.65m/8'8"	
Tyre size	175 R13 97	
Coupling height	440mm/17"	
Mass in running order	906 kg	
Total user payload	214 kg	
MTPLM*	1120 kg*	
Bed sizes	Double	2.10m x 1.48m 6'11" x 4'10"
	or	
	2 x Single	1.88m x 0.74m 6'2" x 2'5"
Awning guide (check with supplier)	839 cm	



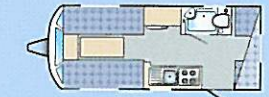
Stellar, 2 berth

Zenith

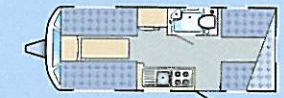
Model	Zenith Sport	Zenith Four	Zenith Five	Zenith Six
Internal body length	4.20m/13'9"	4.63m/15'3"	5.30m/17'5"	5.79m/19'0"
Overall length	5.71m/18'9"	6.10m/20'0"	6.82m/22'4"	7.26m/23'9"
Internal body width	2.04m/6'8"	2.04m/6'8"	2.04m/6'8"	2.04m/6'8"
Overall width	2.16m/7'1"	2.16m/7'1"	2.16m/7'1"	2.16m/7'1"
Maximum internal height	1.90m/6'3"	1.90m/6'3"	1.90m/6'3"	1.90m/6'3"
Overall height	2.48m/8'1"	2.48m/8'1"	2.48m/8'1"	2.48m/8'1"
Tyre size	175 R13 97	175 R13 97	175 R13 97	175 R13 97
Coupling height	440mm/17"	440mm/17"	440mm/17"	440mm/17"
Mass in running order	855 kg	915 kg	998 kg	1027 kg
Total user payload	245 Kg	225 kg	222 kg	273 kg
MTPLM*	1100 kg*	1140 kg*	1220 kg*	1300 kg
Bed sizes	Double	2.01m x 1.55m 6'7" x 5'1"	2.01m x 1.48m 6'7" x 4'10"	2.01m x 1.48m 6'7" x 4'10"
		or	or	or
	2x Single	1.88m x 0.69m 6'2" x 2'3"	1.88m x 0.69m 6'2" x 2'3"	1.88m x 0.69m 6'2" x 2'3"
	Side Single			1.83m x 0.65m 6'0" x 2'1"
	Side Bunk (Top)			1.76m x 0.57m 5'10" x 1'11"
	Rear Single/Double	2.04m x 0.80m 6'8" x 2'6"	2.01m x 0.62m 6'7" x 2'0"	2.01m x 1.29m 6'7" x 4'3"
	Rear Bunk (Top)	2.04m x 0.77m 6'8" x 2'6"	1.98m x 0.53m 6'6" x 1'9"	1.98m x 0.56m 6'6" x 1'10"
Awning guide (check with supplier)	839 cm	875 cm	950 cm	1000 cm



Zenith Sport, 4 berth



Zenith Four, 4 berth



Zenith Five, 5 berth



Zenith Six, 6 berth

Clubman

Model	Clubman 470-2	Clubman 475CK	Clubman 530-4
Internal body length	4.80m/15'9"	4.80m/15'9"	5.30m/17'5"
Overall length	6.25m/20'6"	6.25m/20'6"	6.82m/22'4"
Internal body width	2.16m/7'1"	2.16m/7'1"	2.16m/7'1"
Overall width	2.28m/7'6"	2.28m/7'6"	2.28m/7'6"
Maximum internal height	1.90m/6'3"	1.90m/6'3"	1.90m/6'3"
Overall height	2.65m/8'8"	2.65m/8'8"	2.65m/8'8"
Tyre size	175 R13 97	175 R13 97	175 R13 97
Coupling height	440mm/17"	440mm/17"	440mm/17"
Mass in running order	1050 kg	1040 kg	1080 kg
Total user payload	220 kg	230 kg	220 kg
MTPLM*	1270 kg*	1270 kg*	1300 kg
Bed sizes	Double	2.10m x 1.48m 6'11" x 4'10"	2.10m x 1.48m 6'11" x 4'10"
	or	or	or
	2 x Single	1.88m x 0.74m 6'2" x 2'5"	1.88m x 0.74m 6'2" x 2'5"
	Single		1.83m x 0.60m 6'0" x 2'0"
	Bunk		1.76m x 0.56m 5'10" x 1'10"
Awning guide (check with supplier)	895 cm	895 cm	950 cm



Clubman 470-2, 2 berth



Clubman 475 CK, 2 berth



Clubman 530-4, 4 berth

Delta

Model	Delta 520-2	Twin Axle Delta 620-4	Twin Axle Delta 640-EW
Internal body length	5.52m/18'1"	6.26m/20'6"	6.44m/21'1"
Overall length	6.90m/22'8"	7.60m/24'11"	7.82m/25'8"
Internal body width	2.16m/7'1"	2.16m/7'1"	2.16m/7'1"
Overall width	2.28m/7'6"	2.28m/7'6"	2.28m/7'6"
Maximum internal height	1.90m/6'3"	1.90m/6'3"	1.90m/6'3"
Overall height	2.59m/8'6"	2.59m/8'6"	2.59m/8'6"
Tyre size	175 R13 97	165 R13 79	165 R13 79
Coupling height	440mm/17"	440mm/17"	440mm/17"
Mass in running order	1114 kg	1308 kg	1395 kg
Total user payload	236 kg	292 kg	305 kg
MTPLM*	1350 kg	1600 kg	1700 kg*
Bed sizes	Double	2.10m x 1.48m 6'11" x 4'10"	2.10m x 1.48m 6'11" x 4'10"
	or	or	or
	2 x Single	1.88m x 0.74m 6'2" x 2'5"	1.88m x 0.74m 6'2" x 2'5"
	Double	1.93m x 1.34m 6'4" x 4'5"	1.88m x 1.47m 6'2" x 4'10"
Awning guide (check with supplier)	960 cm	1045 cm	1060 cm



Delta 520-2, 2 berth



Delta 620-4, 4 berth



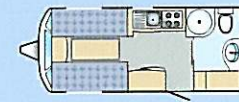
Delta 640-EW, 4 berth

Lexon

Model	Lexon EB	Lexon ES	Lexon CS	Twin Axle Lexon EW	Twin Axle Lexon FB	Twin Axle Lexon 640
Internal body length	5.56m/18'2"	5.56m/18'2"	5.80m/19'0"	6.44m/21'1"	6.44m/21'1"	6.44m/21'1"
Overall length	7.03m/23'2"	7.03m/23'2"	7.26m/23'9"	7.82m/25'8"	7.82m/25'8"	7.82m/25'8"
Internal body width	2.16m/7'1"	2.16m/7'1"	2.16m/7'1"	2.16m/7'1"	2.16m/7'1"	2.16m/7'1"
Overall width	2.28m/7'6"	2.28m/7'6"	2.28m/7'6"	2.28m/7'6"	2.28m/7'6"	2.28m/7'6"
Maximum internal height	1.90m/6'3"	1.90m/6'3"	1.90m/6'3"	1.90m/6'3"	1.90m/6'3"	1.90m/6'3"
Overall height	2.65m/8'8"	2.65m/8'8"	2.65m/8'8"	2.65m/8'8"	2.65m/8'8"	2.65m/8'8"
Tyre size	175 R13 97	175 R13 97	175 R13 97	155 R13 79	155 R13 79	155 R13 79
Coupling height	440mm/17"	440mm/17"	440mm/17"	440mm/17"	440mm/17"	440mm/17"
Mass in running order	1123 kg	1140 kg	1143 kg	1285 kg	1266 kg	1246 kg
Total user payload	227 kg	210 kg	207 kg	315 kg	334 kg	354 kg
MTPLM	1350 kg	1350 kg	1350 kg	1600 kg	1600 kg	1600 kg
Bed sizes	Double	2.10m x 1.48m 6'11" x 4'10"	2.10m x 1.48m 6'11" x 4'10"	2.10m x 1.48m 6'11" x 4'10"	2.10m x 1.48m 6'11" x 4'10"	2.10m x 1.48m 6'11" x 4'10"
	or	or	or	or	or	or
	2 x Single	1.88m x 0.74m 6'2" x 2'5"	1.88m x 0.74m 6'2" x 2'5"	1.88m x 0.74m 6'2" x 2'5"	1.88m x 0.74m 6'2" x 2'5"	1.88m x 0.74m 6'2" x 2'5"
	2 x Bunk				1.74m x 0.64m 5'8" x 2'1"	
	Double	1.93m x 1.47m 6'4" x 4'10"	1.93m x 1.30m 6'4" x 4'3"	1.93m x 1.34m 6'4" x 4'5"	1.88m x 1.47m 6'2" x 4'10"	1.88m x 1.32m 6'2" x 4'4"
	Side Single				1.83m x 0.60m 6'0" x 2'0"	
	Side Bunk				1.76m x 0.56m 5'10" x 1'10"	
Awning guide (check with supplier)	970 cm	970 cm	990 cm	1055 cm	1055 cm	1055 cm

Quasar

Model	Quasar 462	Quasar EB	Quasar 524	Quasar 525	Twin Axle Quasar 615	
Internal body length	4.69m/15'5"	5.23m/17'1"	5.30m/17'5"	5.30m/17'5"	6.13m/20'1"	
Overall length	6.16m/20'2"	6.70m/21'10"	6.82m/22'4"	6.82m/22'4"	7.64m/25'1"	
Internal body width	2.04m/6'8"	2.04m/6'8"	2.04m/6'8"	2.04m/6'8"	2.04m/6'8"	
Overall width	2.16m/7'1"	2.16m/7'1"	2.16m/7'1"	2.16m/7'1"	2.16m/7'1"	
Maximum internal height	1.90m/6'3"	1.90m/6'3"	1.90m/6'3"	1.90m/6'3"	1.90m/6'3"	
Overall height	2.65m/8'8"	2.65m/8'8"	2.65m/8'8"	2.65m/8'8"	2.65m/8'8"	
Tyre size	175 R13 97	175 R13 97	175 R13 97	175 R13 97	155 R13 79	
Coupling height	440mm/17"	440mm/17"	440mm/17"	440mm/17"	440mm/17"	
Mass in running order	968 kg	1040 kg	1065 kg	1074 kg	1205 kg	
Total user payload	222 kg	260 kg	235 kg	226 kg	245 kg	
MTPLM*	1190 kg*	1300 kg	1300 kg	1300 kg	1450 kg*	
Bed sizes	Double	2.01m x 1.48m 6'7" x 4'10"	2.01m x 1.48m 6'7" x 4'10"	2.01m x 1.48m 6'7" x 4'10"	2.01m x 1.48m 6'7" x 4'10"	2.01m x 1.48m 6'7" x 4'10"
	or	or	or	or	or	or
	2 x Single	1.88m x 0.69m 6'2" x 2'3"	1.88m x 0.69m 6'2" x 2'3"	1.88m x 0.69m 6'2" x 2'3"	1.88m x 0.69m 6'2" x 2'3"	1.88m x 0.69m 6'2" x 2'3"
	Single		1.83m x 0.60m 6'0" x 2'0"		1.83m x 0.74m 6'0" x 2'5"	
	Double	1.93m x 1.33m 6'4" x 4'4"		2.01m x 1.29m 6'7" x 4'3"		
	Bunk		1.76m x 0.56m 5'10" x 1'10"	1.98m x 0.56m 6'6" x 1'10"	1.83m x 0.64m 6'0" x 2'1"	
Awning guide (check with supplier)	890 cm	930 cm	940 cm	940 cm	1030 cm	



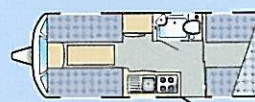
Quasar 462, 2 berth



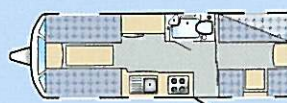
Quasar EB, 4 berth



Quasar 524, 4 berth



Quasar 525, 5 berth



Quasar 615, 5 berth



Lexon EB, 4 berth



Lexon ES, 4 berth



Lexon CS, 4 berth



Lexon EW, 4 berth



Lexon FB, 6 berth



Lexon 640, 4 berth

Alternative interior formats

An 'L' front seat option is available for all models except the Ariva. This option gives an offside, long picture window and a floor cabinet. The double bed size is 2.01 x 1.23m (6'7" x 4'0").

The Quasar 525 is also available with a rear bed 'L' option with a bed size of 1.80 x 1.29m (5'11" x 4'3").



Front 'L' layout option.



Rear 'L' layout option.

Soft furnishing selection

We have carefully selected the soft furnishings for each model range. However for a small charge, and subject to availability, you may select the soft furnishings from any of our ranges to suit your preference.

Important

MRO includes a manufacturing tolerance to reflect changes in the weights of the component materials. It is anticipated that this figure will never be exceeded in the standard ex-works specification.

* MTPLM increase option

Most models can have the MTPLM (maximum technical permissible laden mass) increased with minimal disruption. Contact your Lunar Caravans dealer for further information.

Extended Warranty for touring peace of mind

All Lunar caravans receive a factory backed, full three year warranty, subject to an annual service and inspection and excluding ordinary items subject to wear and tear.

All Lunar models have been certified by the National Caravan Council for compliance with stringent European Standards, British Legislation and industry set Codes of Practice specifically relating to health and safety issues. The approval process covers the testing and inspection of critical areas of the product from fire safety, weights and dimensions to gas, electrics and ventilation. Every Lunar caravan carries the 'NCC Approved Caravan' badge. The NCC also conducts unannounced inspections at the Lunar factory to ensure continued compliance. NCC approval gives peace of mind that your caravan is legal and safe.



NATIONAL CARAVAN
COUNCIL LIMITED

Lunar Owner's Club

When you choose a Lunar caravan you also have the opportunity to join the growing band of enthusiasts who enjoy all the benefits of the Lunar Owner's Club. As a club member you will be sent regular newsletters containing all the latest information on upcoming events, reviews, letters from fellow members and news from Lunar Caravans itself.

You'll be made very welcome at all the numerous rallies which take place across the country by people sharing a common interest in Lunar caravanning. They can also offer you a wealth of knowledge and expertise to help you enjoy your future touring even more.

Perhaps more importantly however, when you become a Lunar Owner's Club member you join new friends just like you who share a real interest in the freedom of luxurious, lightweight touring at its very best.



Sherdley Road • Lostock Hall • Preston • Lancashire PR5 5JF
Telephone: 01772 337628 • Fax: 01772 627722

www.lunarcaravans.com

The contents of this brochure are as accurate as possible at the time of going to print - August 2003.
Lunar Caravans Limited reserve the right to alter materials, specifications, price and model ranges as conditions demand.
It should be noted that distributors and dealers are not the agents of Lunar Caravans Ltd and therefore are not authorised to bind the Company by any specific or implied undertaking or representation. This brochure does not constitute an offer.
©2004 Lunar Caravans Ltd.

Designed and produced by Creative Marketing Solutions 015242 63820.



YOUR 1ST CHOICE FOR MORE CHOICE

- OVER 300 CARAVANS ON SHOW
- INDOOR & SEASONAL OUTDOOR CAMPING DISPLAY
- AWNING DISCOUNT CENTRE
- ACCESSORIES SUPERMARKET
- 5 STAR SERVICE CENTRE & REPAIR WORKSHOPS
- FINANCE & INSURANCE (SUBJECT TO STATUS)

GUARANTEED A WARM WELCOME

HIGHBRIDGE
Caravan and Camping Centre

OPEN 7 DAYS A WEEK

01278 782725
A38, BRISTOL RD, HIGHBRIDGE, SOMERSET, TA9 4EX
www.highbridgecaravans.co.uk

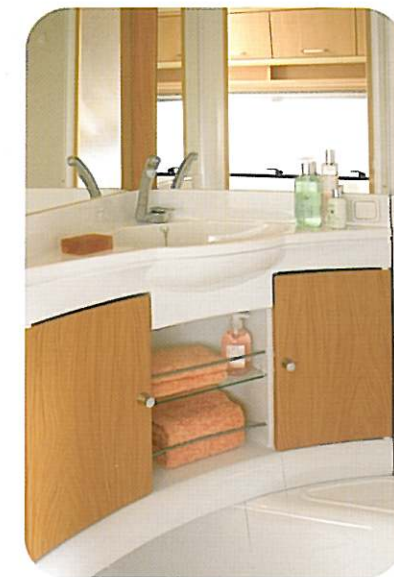
Combining innovation with classic continental



Chateau 500



Chateau 400



Chateau 470

New for 2004

- New external graphics
- New furniture colour
- New interior furniture door design
- New furniture door handles
- New soft furnishings
- New parquet style floor covering
- New oven/grill by Cramer

New Optional Pack Including

- Alloy wheels - 185x14"
- Side skirts

Chateau

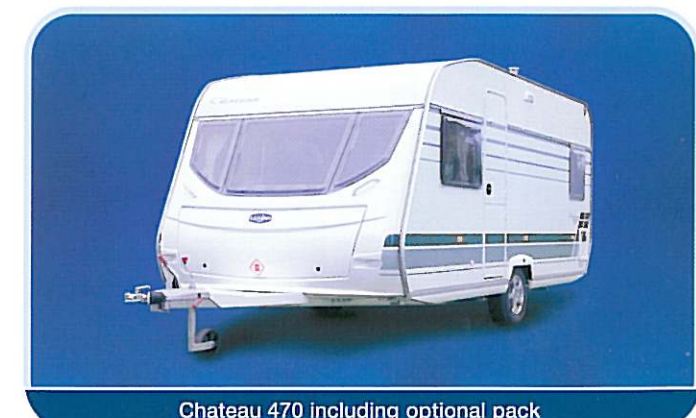
Chateau combines all that's best from its European pedigree with a variety of enhancements to suit the UK market, such as the very English three window front.

Chateau's sturdy exterior features an uncluttered 'A' frame which, because of its length gives superb touring stability. The gas locker storage has such easy access that even the water container is readily accessible.

There is a layout to suit every family – the 4 berth Chateau 400 is also ideal as a roomy 2 berth. The Chateau 500 has sturdy fixed bunk beds, whilst the Chateau 450 offers a traditional double dinette layout with a 5th berth bunk at the rear.

The Chateau 470 fixed bed arrangement has been very successful and we are now offering the Chateau 430, a shorter version with the fixed bed at the front of the caravan, an extremely popular design on mainland Europe.

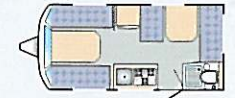
A keen pricing policy ensures that the five layouts offer unrivalled value for money, creating the opportunity for all caravanners to afford a high quality brand new model with a comprehensive specification to suit today's needs.



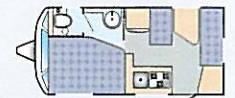
Chateau 470 including optional pack

Chateau Range

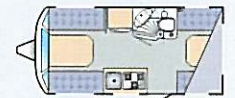
Model	Chateau 400	Chateau 430	Chateau 450	Chateau 470	Chateau 500	
Internal body length	4.06m/13'4"	4.40m/14'5"	4.40m/14'5"	4.64m/15'2"	4.96m/16'3"	
Overall length	6.01m/19'8"	6.30m/20'8"	6.30m/20'8"	6.53m/21'5"	6.91m/22'8"	
Internal body width	2.06m/6'9"	2.06m/6'9"	2.06m/6'9"	2.15m/7'1"	2.06m/6'9"	
Overall width	2.20m/7'2"	2.20m/7'2"	2.20m/7'2"	2.28m/7'6"	2.20m/7'2"	
Maximum internal height	1.90m/6'3"	1.90m/6'3"	1.90m/6'3"	1.90m/6'3"	1.90m/6'3"	
Overall height	2.57m/8'5"	2.57m/8'5"	2.57m/8'5"	2.57m/8'5"	2.57m/8'5"	
Tyre size	165 R13 C 8	165 R13 C 8	165 R13 C 8	165 R13 C 8	175 R14 C 8	
Coupling height	440mm/17"	440mm/17"	440mm/17"	440mm/17"	440mm/17"	
Mass in running order	937 kg	978 kg	998 kg	1060 kg	1090 kg	
Total user payload	213 kg	202 kg	232 kg	210 kg	210 kg	
MTPLM*	1150 kg*	1180 kg*	1230 kg*	1270 kg*	1300 kg	
Bed sizes	Double	2.02m x 1.38m 6'7" x 4'6"	1.98m x 1.38m 6'6" x 4'6"	2.02m x 1.40m 6'7" x 4'7"	2.10m x 1.40m 6'10" x 4'7"	2.02m x 1.38m 6'7" x 4'6"
	Single					1.82m x 0.8m 6'0" x 2'7"
	Bunk			1.68m x 0.64m 5'6" x 2'1"		2 x 1.89m x 0.65m 6'2" x 2'2"
	Double	1.98m x 1.38m 6'6" x 4'6"	1.88m x 1.22m 6'2" x 4'0"	2.02m x 1.13m 6'7" x 3'8"	2.00m x 1.45m 6'6" x 4'9"	
	Awning guide (check with supplier)	850 cm	876 cm	876 cm	905 cm	925 cm



Chateau 400, 4 berth



Chateau 430, 4 berth



Chateau 450, 5 berth



Chateau 470, 4 berth



Chateau 500, 5 berth

MRO includes a manufacturing tolerance to reflect changes in the weights of the component materials. It is anticipated that this figure will never be exceeded in the standard ex-works specification.

* MTPLM increase option

Most models can have the MTPLM (maximum technical permissible laden mass) increased with minimal disruption. Contact your Lunar Caravans dealer for further information.

Chateau specifications include

- 12v reading lights
- TV aerial point
- Truma gas and electric water heater, plumbed to both the kitchen and the washroom
- Truma flued room heater
- Smoke alarm
- One key number to suit all locks
- Isolation taps for gas appliances
- Rugged furniture hinges and handles
- Awning light
- 12v charger/mains transformer
- Dometic gas and electric fridge with freezer compartment
- Blinds and flyscreens to all windows
- 3 burner hob
- Combined oven and grill
- 2 x mains sockets
- 12v reading lights at children's bunks
- External mains electric connection
- Exterior door with magazine racks and coat hooks
- Al-Ko galvanised steel chassis
- External battery locker
- Gas bottle storage with recess for corner steady handle
- Fully insulated: Walls to 26mm
Floor to 39mm
Ceiling to 40mm
- Fitted cassette toilet
- Bed ventilation boards to improve airflow and reduce condensation
- Free-standing, easy fold main dining table in the Chateau 470 and 500
- Long 'A' frame suitable for a cycle rack
- Easy clean vinyl flooring
- Large cutlery tray
- Mini tilt & slide rooflight



Extended Warranty for touring peace of mind

All Lunar caravans receive a factory backed, full three year warranty, subject to an annual service and inspection and excluding ordinary items subject to wear and tear.



Sherdley Road • Lostock Hall • Preston • Lancashire PR5 5JF
Telephone: 01772 337628 • Fax: 01772 627722

www.lunarcaravans.com

The contents of this brochure are as accurate as possible at the time of going to print - August 2003. Lunar Caravans Limited reserve the right to alter materials, specifications, price and model ranges as conditions demand. This brochure does not constitute an offer. ©2004 Lunar Caravans Ltd.

It should be noted that distributors and dealers are not the agents of Lunar Caravans Ltd and therefore are not authorised to bind the Company by any specific or implied undertaking or representation.

Designed and produced by Creative Marketing Solutions 015242 63820.