

Leaders in Leisure

# Abbey Caravans 2006

**YOUR 1<sup>ST</sup> CHOICE FOR  
MORE CHOICE**

- OVER 300 CARAVANS ON SHOW
- INDOOR & SEASONAL OUTDOOR CAMPING DISPLAY
- AWNING DISCOUNT CENTRE
- ACCESSORIES SUPERMARKET
- 5 STAR SERVICE CENTRE & REPAIR WORKSHOPS
- FINANCE & INSURANCE (SUBJECT TO STATUS)

**GUARANTEED A  
WARM WELCOME**

## HIGHBRIDGE

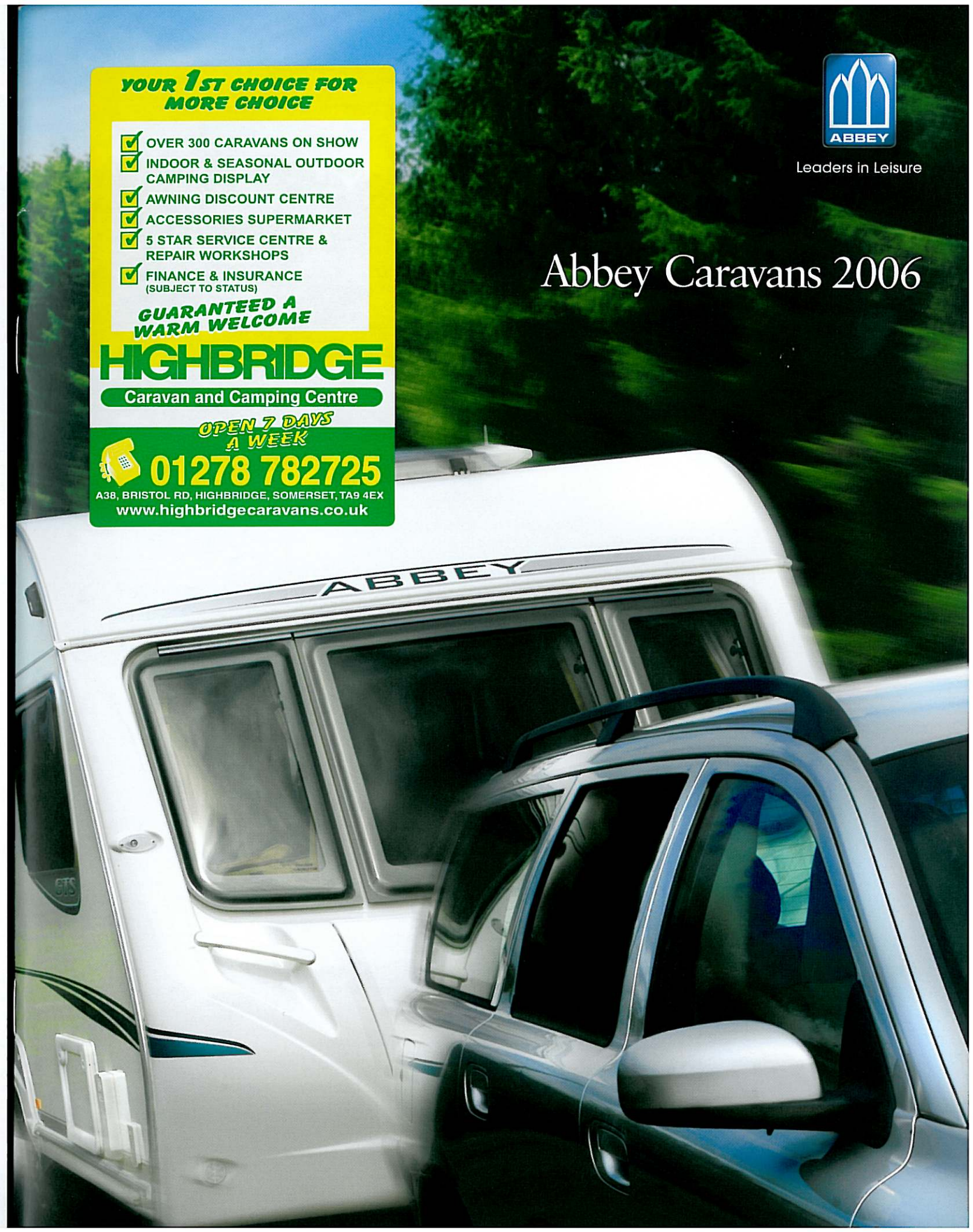
Caravan and Camping Centre

**OPEN 7 DAYS  
A WEEK**



**01278 782725**

A38, BRISTOL RD, HIGHBRIDGE, SOMERSET, TA9 4EX  
[www.highbridgecaravans.co.uk](http://www.highbridgecaravans.co.uk)





Leaders in Leisure

## Abbey Caravans 2006



### Aventura

With nine versatile layouts to choose from, this tourer's appeal and specification makes it a perfect introduction to the Abbey range.



### GTS Vogue

For those wanting added luxury on the road, the GTS Vogue offers traditional style with a higher specification in a manageable size tourer.



### Spectrum

The ultimate in space and specification, this stunning twin-axle range offers everything you need for life in the great outdoors.

Traditional qualities such as classic style and solid build mean that Abbey tourers are designed to look good and hold their appeal for years to come.

Abbey remains the only range of tourers to offer the unique scratch and impact resistant benefits provided by the GRP sidewalls fitted to all models.



entura

Aventura 316



The 7'4" wide Aventura is enhanced with an AL-KO AKS 3004 stabiliser to help prevent "snaking" for added towing confidence, an AL-KO Euro hitch with two-way assisted handbrake for ease of use, stylish alloy wheels, a spare steel wheel carrier and a wet locker for wet and muddy items.





Aventura 318

New soft furnishings in Dakar green with two bolster cushions and two scatter cushions help to create a relaxing interior and are complemented by loose fit carpets, which are easily removed for cleaning. Domestic style kitchen facilities include a range-style cooker with dual fuel hob, and a large 107-litre electronic ignition fridge with stylish curved door, salad drawer and full-width



Aventura 340

Moulded lockers and bed frames are precision-engineered to make them light and strong with a high build quality. This also provides the benefit of more usable space underneath seats with easy access via the full-front access flaps.

Washrooms in all models now have separated showering facilities to create a dry area for the washbasin and cassette toilet.

## Exterior Equipment

width 2.23m / 7'4"  
nised steel chassis with  
overrun device with two-way  
brake  
3004 Stabiliser  
frame cover with plug ties  
reels  
(steel) and underslung carrier  
nt panel with three opening  
d door with gas struts  
r panel with rear light clusters  
el brake light  
piece GRP sidewall  
ting panoramic roof window  
nd blind. (Two in the 318)  
ed opening windows with  
tion position  
-part door with window and  
ick-release retainer  
ss battery box with mains  
(battery not included)  
al access locker or access door  
ardrobe (model specific)  
awning light

- Fixing points for rear-mounted cycle rack
- 25mm 'sandwich' sidewalls with HD polystyrene insulation core
- 32mm semi-'sandwich' roof with HD polystyrene insulation core
- 44mm 'sandwich' floor with Styrofoam insulation core

## Living Area

- Large upper lockers with spaceframe construction
- Seat bases with spaceframe construction, full front access and space for larger items
- Fixed beds with aluminium frames to maximise strength and storage space
- Hinged seat and bed tops supported in open position for easy access
- Mattresses and seat cushions supported by beech slats for extra comfort
- Sprung interior mattresses, seat and backrest cushions
- **NEW** seat and backrest ventilation boards
- Long front beds 1900mm (6'3") (model specific)
- Chest of drawers with occasional table (model specific)
- Free-standing table with dedicated storage location

- 2 x scatter cushions
- 2 x bolster cushions
- Twin curtain track for improved hanging and ease of use
- Removable carpets over woodblock effect vinyl flooring

## Kitchen

- **NEW** 107 litre fridge with curved door, electronic ignition and single energy and temperature controls
- Recessed stainless steel bowl
- Removable drainer with dedicated storage
- Food grade nylon chopping board with dedicated storage
- Chrome finish brass pillar tap with long spout
- Belling thermostatic oven and separate grill
- Belling dual fuel hob with 800W electric hotplate and 3 gas burners with electronic ignition and flame failure protection
- Glass hob lid with safety cut-out feature
- Moulded cutlery drawer on smooth steel runners
- Analogue clock

## Washroom

- **NEW** washbasin and mirror-wall pivot to create dry area for toilet, washbasin, mirror, towels etc and area for showering in 316 & 330
- Shower cubicles in the 315, 320, 325 & 340
- Shower area separated by bi-fold doors in the 312, 317 & 318
- Thetford cassette toilet with independent tank and manual flush
- Chrome finish mixer taps and shower equipment
- Multi-directional rooflight with flyscreen

## Fittings and Equipment

- Cassette flyscreens and blinds on all windows
- Full height door flyscreen
- Multi-directional rooflight with flyscreen and blind
- Gas regulator for Propane and Butane mounted on front bulkhead
- Isolation taps for gas appliances
- Smoke alarm
- Entrance step
- Removable entrance mat
- Domestic style cabinet hinges

## Heating and Plumbing

- Dual fuel gas and 800W mains electric storage water heater
- Dual fuel 3kW gas and 2kW electric space heater
- Blown air system ducted to living, sleeping and washroom areas
- **NEW** - Areas under seats and beds warmed by blown air system
- Grade 2 classification for heating and thermal insulation
- Inboard semi-rigid fresh water pipes
- Submersible water pump with external connection point
- Large bore underslung rigid waste pipes

## Electrical

- Fully protected mains electric system with two 230V sockets
- Switchmode charger/transformer
- 12V control panel with battery state meter, car/caravan battery switch and water pump switch
- Solar panel connection provision
- Omni-directional TV/FM aerial and booster

- TV station with 230V, 12V and coax aerial sockets
- Halogen ceiling lights in living and washroom areas
- Halogen adjustable downlights in lounge/sleeping areas and kitchen
- 25 metre mains hook-up cable

## Safety and Security

- CRiS identity number etched to windows and caravan chassis
- Concealed security data chip within caravan construction
- Single key for all locks
- All models comply with British and European safety standards

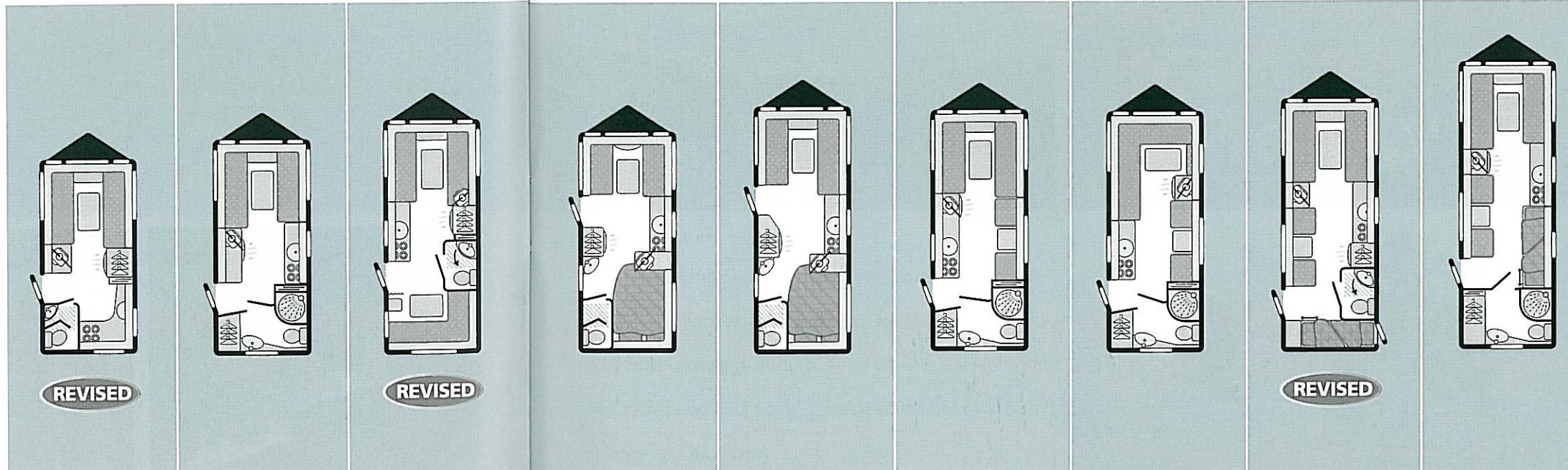
entura  
atures



	312	315	316	317	318	320	325	330	340
Berths	2	2	5	4	4	4	4	6	6
Number of Axles	1	1	1	1	1	1	1	1	2
Internal Length (at bed box height)	4.20m/13'9"	4.67m/15'4"	5.13m/16'10"	4.74m/15'7"	5.39m/17'8"	5.23m/17'2"	5.23m/17'2"	5.50m/18'1"	6.27m/20'7"
Overall Width	2.23m/7'4"	2.23m/7'4"	2.23m/7'4"	2.23m/7'4"	2.23m/7'4"	2.23m/7'4"	2.23m/7'4"	2.23m/7'4"	2.23m/7'4"
Overall Height (including TV aerial)	2.70m/8'10"	2.70m/8'10"	2.70m/8'10"	2.70m/8'10"	2.70m/8'10"	2.70m/8'10"	2.70m/8'10"	2.70m/8'10"	2.70m/8'10"
Overall Length	5.88m/19'3"	6.35m/20'10"	6.81m/22'4"	6.42m/21'1"	7.07m/23'2"	6.91m/22'8"	6.91m/22'8"	7.18m/23'7"	7.95m/26'1"
Mass in Running Order (including tolerance)	1029kg/20.3cwt	1086kg/21.4cwt	1197kg/23.6cwt	1103kg/21.7cwt	1212kg/23.9cwt	1197kg/23.6cwt	1183kg/23.3cwt	1229kg/24.2cwt	1378kg/27.1cwt
Essential Habitation Equipment Payload	68kg/1.3cwt	68kg/1.3cwt	68kg/1.3cwt	68kg/1.3cwt	68kg/1.3cwt	68kg/1.3cwt	68kg/1.3cwt	68kg/1.3cwt	68kg/1.3cwt
Personal Effects Payload	100kg/2.0cwt	105kg/2.1cwt	139kg/2.7cwt	125kg/2.5cwt	132kg/2.6cwt	130kg/2.6cwt	130kg/2.6cwt	153kg/3.0cwt	160kg/3.1cwt
Optional Equipment Payload	4kg/0.1cwt	4kg/0.1cwt	4kg/0.1cwt	4kg/0.1cwt	4kg/0.1cwt	4kg/0.1cwt	4kg/0.1cwt	4kg/0.1cwt	4kg/0.1cwt
Maximum Technical Permissible Laden Mass	1201kg/23.7cwt	1263kg/24.9cwt	1408kg/27.7cwt	1300kg/25.6cwt	1416kg/27.9cwt	1399kg/27.6cwt	1385kg/27.3cwt	1454kg/28.6cwt	1610kg/31.6cwt
Awning A/A Dimension"	8.41m/27'7"	8.88m/29'2"	9.34m/30'8"	8.95m/29'4"	9.60m/31'6"	9.44m/31'0"	9.44m/31'0"	9.71m/31'10"	10.48m/34'5"
Tyre Size	195/70 r14	195/70 r14	175 r14 99	195/70 r14	175 r14 99	175 r14 99	175 r14 99	175 r14 99	175/65 r14 82
<b>bed sizes</b>									
Front Double*	208cm x 180cm/6'10" x 5'11"	208cm x 180cm/6'10" x 5'11"	208cm x 180cm/6'10" x 5'11"	208cm x 134cm/6'10" x 4'5"	208cm x 167cm/6'10" x 5'6"	208cm x 180cm/6'10" x 5'11"	209cm x 139cm/6'10" x 4'7"	208cm x 180cm/6'10" x 5'11"	208cm x 180cm/6'10" x 5'11"
or One Single	190cm x 72cm/6'3" x 2'4"	180cm x 72cm/5'11" x 2'4"	190cm x 72cm/6'3" x 2'4"		190cm x 72cm/6'3" x 2'4"	190cm x 72cm/6'3" x 2'4"	190cm x 72cm/6'3" x 2'4"	180cm x 72cm/5'11" x 2'4"	180cm x 72cm/5'11" x 2'4"
and One Single	180cm x 72cm/5'11" x 2'4"	190cm x 72cm/6'3" x 2'4"	180cm x 72cm/5'11" x 2'4"		167cm x 72cm/5'6" x 2'4"	180cm x 72cm/5'11" x 2'4"	190cm x 72cm/6'3" x 2'4"	180cm x 72cm/5'11" x 2'4"	190cm x 72cm/6'3" x 2'4"
Rear Double			209cm x 133cm/6'10" x 4'4"	188cm x 138cm/6'2" x 4'6"	198cm x 138cm/6'6" x 4'6"				
Rear Bunk			194cm x 56cm/6'4" x 1'10"						
Side Single (offside)						180cm x 70cm/5'11" x 2'4"	180cm x 70cm/5'11" x 2'4"		
Side Single (nearside)								180cm x 70cm/5'11" x 2'4"	180cm x 70cm/5'11" x 2'4"
Side Bunk						178cm x 59cm/5'10" x 1'11"	178cm x 59cm/5'10" x 1'11"		
Rear Fixed Lower Bunk								180cm x 62cm/5'11" x 2'1"	
Rear Fixed Upper Bunk								184cm x 60cm/6'0" x 2'0"	
Side Fixed Lower Bunk									180cm x 56cm/5'11" x 1'10"
Side Fixed Upper Bunk									180cm x 58cm/5'11" x 1'11"

# ventura specifications

size is quoted with wrap round seating.  
 ing sizes: Due to the varying awning designs and sizes the  
 given are approximate only.  
 ing sizes must be confirmed by your dealer or the awning  
 r prior to purchase.





# GTS Vogue

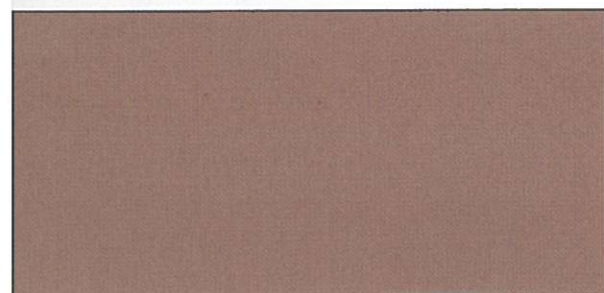
GTS Vogue 416



This classic range has a smooth, aerodynamic front, sides with flush aluminium framed windows, striking graphics and distinctive rear light clusters. Alloy wheels, a 230V socket, wet locker and BBQ point combine to create an outstanding exterior specification.







GTS Vogue 416

Kitchens are well fitted with a 93-litre fridge with stylish curved door and single energy selector switch, dual fuel hob with three gas rings and one electric hotplate, and a recessed circular sink with removable drainer and chopping board for versatile use of the worktop space. Locker doors have quality, solid ash frames.



GTS Vogue 415

Entertainment facilities include a radio/CD/MP3 player as standard or there is the option to upgrade to a DVD player, with all connections already conveniently in place. Security is improved with a new alarm system and a new AL-KO Secure portable wheel lock, which locates between wheel spokes to prevent motion.



is not included)



GTS Vogue 417

This eight-model range offers a wide choice of layouts with parallel and 'L' shape seating options, centre or rear washroom, and two fixed bed models. All washrooms offer a luxurious specification with an integral round shower cubicle or separated shower area and a large window.

## Exterior Equipment

width 2.23m / 7'4"  
ed steel chassis with  
errun device with two-way  
rake  
04 Stabiliser  
ner steadies  
ime cover with gas  
ight and plug ties  
als  
eel) and underslung carrier  
panel with three opening  
door with gas struts  
panel incorporating  
vel brake light and  
ers  
ece GRP  
uction  
g panoramic roof window  
d blind. (Two in the 415)  
luminium framed  
opening windows with  
n position  
art door with moulded  
indow, blind and  
etainer  
battery box with aerial  
s electric inlet  
cluded)  
access locker with 230V  
t

- External access door (model specific)
- Gas barbecue point with isolation valve
- Flush fitting awning light
- Fixing points for rear-mounted cycle rack
- 25mm 'sandwich' sidewalls with HD polystyrene insulation core
- 32mm semi-'sandwich' roof with HD polystyrene insulation core
- 44mm 'sandwich' floor with styrofoam insulation core

## Living Area

- Large upper lockers with ash-framed doors
- Rolled edged hardwood mouldings to worktops and tables
- **NEW** seat bases with spaceframe construction, full front access and space for larger items
- Fixed beds with aluminium frames to maximise strength and storage space
- Hinged seat and bed tops supported in open position for easy access
- Mattresses and seat cushions supported by beech slats for extra comfort
- Sprung interior mattresses, seat and backrest cushions
- Seat and backrest ventilation boards
- Long front beds 1900mm (6'3") (model specific)
- Chest of drawers with occasional table (model specific)

- Free-standing table with dedicated storage location
- 2 x scatter cushions
- Bolster cushions or armrests
- Twin curtain track for improved hanging and ease of use
- Removable carpets over woodblock effect vinyl flooring
- Analogue clock

## Kitchen

- **NEW** 93 litre fridge with curved door, electronic ignition and single energy and temperature controls
- Recessed stainless steel bowl
- Removable drainer with dedicated storage
- Food grade nylon chopping board with dedicated storage
- Chrome finish brass pillar tap with long spout
- Belling thermostatic oven and separate grill
- Belling dual fuel hob with 800W electric hotplate and 3 gas burners with electronic ignition and flame failure protection
- Glass hob lid with safety cut-out feature
- Cupboard for optional microwave oven (216)
- Moulded cutlery drawer on smooth steel runners

## Washroom

- Fully fitted luxury washroom with separate shower areas or cubicles
- Thetford cassette toilet with independent tank and electric flush
- Chrome finish mixer taps and shower equipment
- Multi-directional rooflight with flyscreen
- Opening window
- Removable hanging rail in shower cubicle (model specific)

## Fittings and Equipment

- Cassette flyscreens and blinds on all windows (Concertina on sides and rear)
- Full height door flyscreen
- Omnivent 3-speed fan and skylight
- Multi-position 'Mini-Heki' clear rooflight with flyscreen and blind (model specific)
- Gas regulator for Propane and Butane mounted on front bulkhead
- Isolation taps for gas appliances
- Smoke alarm
- Entrance step
- Entrance mat with embroidered logo in tray
- Domestic style cabinet hinges

## Heating and Plumbing

- Dual fuel gas and 800W mains electric storage water heater
- Dual fuel 3kW gas and 2kW electric space heater
- Blown air system ducted to living, sleeping and washroom areas
- Grade 2 classification for heating and thermal insulation
- Inboard semi-rigid fresh water pipes
- Submersible water pump with external connection point
- Large bore underslung rigid waste pipes

## Electrical

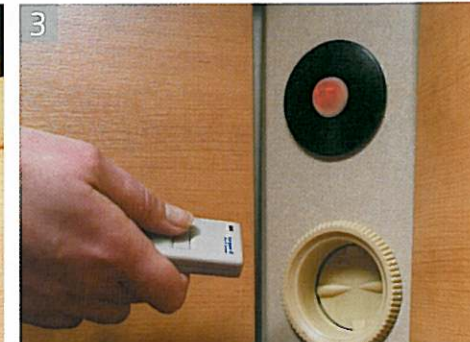
- Fully protected mains electric system with three 230V sockets
- 18 amp switchmode charger/transformer
- 12V control panel with battery state meter, awning light and water pump switches
- Solar panel connection provision
- **NEW** radio/CD/MP3 player
- **NEW** DVD socket and wiring for optional DVD player
- Omni-directional TV/FM aerial and booster
- TV station with 230V, 12V and coax aerial sockets
- Mains lights on front locker corner panels
- Halogen ceiling lights in living and washroom areas
- Halogen downlight in kitchen

- Halogen adjustable spotlights in lounge and sleeping areas
- 25 metre mains hook-up cable

## Safety and Security

- **NEW** AL-KO Secure portable wheel lock
- **NEW** passive infra-red alarm system with tilt sensor and key fob operation
- CRiS identity number etched to windows and caravan chassis
- Concealed security data chip within caravan construction
- Single key for all locks
- All models comply with British and European safety standards

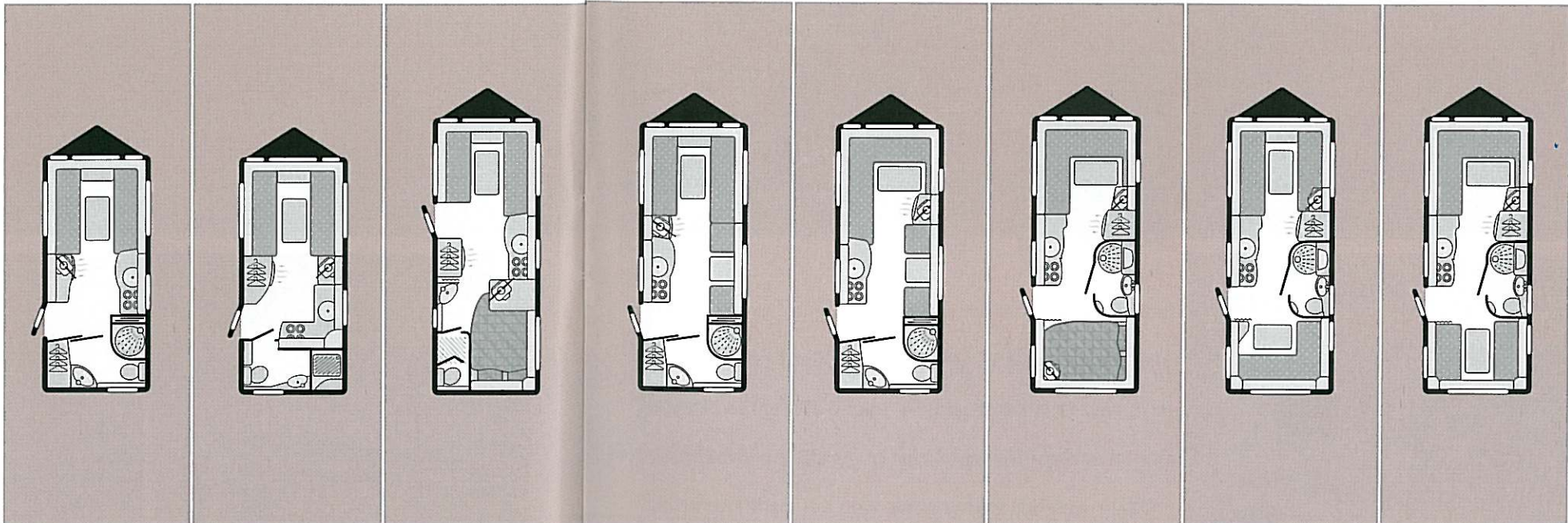
S Vogue  
tures



	215	216	415	416	417	420	516	517
Berths	2	2	4	4	4	4	5	5
Number of Axles	1	1	1	1	1	1	1	1
Internal Length (at bed box height)	4.61m/15'2"	4.61m/15'2"	5.39m/17'8"	5.23m/17'2"	5.23m/17'2"	5.39m/17'8"	5.39m/17'8"	5.39m/17'8"
Overall Width	2.23m/7'4"	2.23m/7'4"	2.23m/7'4"	2.23m/7'4"	2.23m/7'4"	2.23m/7'4"	2.23m/7'4"	2.23m/7'4"
Overall Height (including TV aerial)	2.76m/9'1"	2.76m/9'1"	2.76m/9'1"	2.76m/9'1"	2.76m/9'1"	2.76m/9'1"	2.76m/9'1"	2.76m/9'1"
Overall Length	6.29m/20'8"	6.29m/20'8"	7.07m/23'2"	6.91m/22'8"	6.91m/22'8"	7.07m/23'2"	7.07m/23'2"	7.07m/23'2"
Mass in Running Order (including tolerance)	1130kg/22.2cwt	1124kg/22.1cwt	1255kg/24.7cwt	1232kg/24.3cwt	1216kg/23.9cwt	1245kg/24.5cwt	1263kg/24.9cwt	1263kg/24.9cwt
Essential Habitation Equipment Payload	68kg/1.3cwt	68kg/1.3cwt	68kg/1.3cwt	68kg/1.3cwt	68kg/1.3cwt	68kg/1.3cwt	68kg/1.3cwt	68kg/1.3cwt
Personal Effects Payload	104kg/2.0cwt	104kg/2.0cwt	132kg/2.6cwt	130kg/2.6cwt	130kg/2.6cwt	132kg/2.6cwt	142kg/2.8cwt	142kg/2.8cwt
Optional Equipment Payload	3kg/0.1cwt	16kg/0.3cwt	3kg/0.1cwt	3kg/0.1cwt	3kg/0.1cwt	3kg/0.1cwt	3kg/0.1cwt	3kg/0.1cwt
Maximum Technical Permissible Laden Mass	1305kg/25.6cwt	1312kg/25.7cwt	1458kg/28.7cwt	1433kg/28.3cwt	1417kg/27.9cwt	1448kg/28.5cwt	1476kg/29.1cwt	1476kg/29.1cwt
Awning A/A Dimension**	8.90m/29'2"	8.90m/29'2"	9.68m/31'9"	9.52m/31'3"	9.52m/31'3"	9.68m/31'9"	9.68m/31'9"	9.68m/31'9"
Tyre Size	195/70 r14	195/70 r14	175 r14 99	175 r14 99	175 r14 99	175 r14 99	175 r14 99	175 r14 99
<b>bed sizes</b>								
Front Double'	208cm x 190cm/6'10" x 6'3"	208cm x 190cm/6'10" x 6'3"	208cm x 166cm/6'10" x 5'5"	208cm x 180cm/6'10" x 5'11"	208cm x 139cm/6'10" x 4'7"	208cm x 139cm/6'10" x 4'7"	208cm x 180cm/6'10" x 5'11"	208cm x 139cm/6'10" x 4'7"
or One Single	190cm x 71cm/6'3" x 2'4"	190cm x 71cm/6'3" x 2'4"	190cm x 71cm/6'3" x 2'4"	190cm x 71cm/6'3" x 2'4"	190cm x 71cm/6'3" x 2'4"		190cm x 71cm/6'3" x 2'4"	
and One Single	190cm x 71cm/6'3" x 2'4"	190cm x 71cm/6'3" x 2'4"	166cm x 71cm/5'5" x 2'4"	180cm x 71cm/5'11" x 2'4"	190cm x 71cm/6'3" x 2'4"		180cm x 71cm/5'11" x 2'4"	
Rear Double			196cm x 138cm/6'5" x 4'6"			190cm x 138cm/6'3" x 4'6"	192cm x 138cm/6'4" x 4'6"	208cm x 138cm/6'10" x 4'6"
Rear Bunk							192cm x 58cm/6'4" x 1'11"	192cm x 58cm/6'4" x 1'11"
Side Single (offside)				180cm x 66cm/5'11" x 2'2"	180cm x 66cm/5'11" x 2'2"			
Side Bunk				178cm x 56cm/5'10" x 1'10"	178cm x 56cm/5'10" x 1'10"			

# S Vogue Specifications

Size is quoted with wrap round seating.  
 Bed sizes: Due to the varying awning designs and sizes the given are approximate only.  
 Weight sizes must be confirmed by your dealer or the awning prior to purchase.





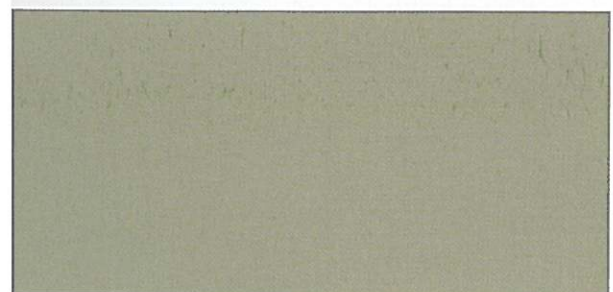
Spectrum

Spectrum 540



This luxurious four-model range is the ultimate in space and specification. The Spectrum shares the same striking external features as the GTS Vogue with the addition of twin axles for added towing stability. To help keep your investment safe and secure there is a new alarm system and new AL-KO



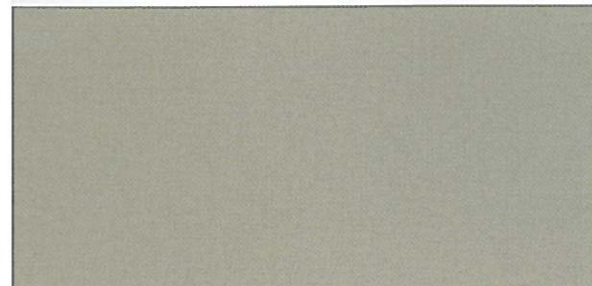


Spectrum 540

The high standards set by the Spectrum's distinctive exterior are easily matched within. Kitchens are spacious and well equipped with all the standard features you would expect including a microwave oven, dual fuel hob and large fridge with salad drawer and full width freezer compartment. An internal 45 litre fresh water tank ensures there is a plentiful water supply for washing and showering.



not included)



Spectrum 540

With four innovative layouts enjoying the highest quality of fixtures and fittings, this versatile, twin-axle tourer offers a wide choice of seating and fixed bed sleeping options. All models have fully fitted luxury washrooms with separate sealed shower cubicles, large vanity bowl and electric flush cassette toilet.



## Exterior Equipment

width 2.23m / 7'4"  
red steel chassis with  
errun device with two-way  
rake  
04 Stabiliser  
de mountable jack  
ner steadies,  
rear  
ame cover with gas  
ight and plug tidies  
els  
teel) and underslung carrier  
panel with three opening  
door with gas struts  
panel with incorporating  
vel brake light and  
ers  
iece GRP  
ruction  
ng panoramic roof  
flynets and blind.  
(5 & 540)  
luminium framed  
opening windows with  
on position  
art door with moulded  
window, blind and  
retainer

- Exterior access battery box with aerial inlet and mains electric inlet (battery not included)
- Lined external access locker with 230V external socket
- External access door (model specific)
- Gas barbecue point with isolation valve
- Flush fitting awning light
- Fixing points for rear-mounted cycle rack
- 25mm 'sandwich' sidewalls with HD polystyrene insulation core
- 32mm semi-'sandwich' roof with HD polystyrene insulation core
- 44mm 'sandwich' floor with styrofoam insulation core

## Living Area

- Large upper lockers with ash-framed doors
- Rolled edged hardwood mouldings to worktops and tables
- **NEW** seat bases with spaceframe construction, full front access and space for larger items
- Fixed beds with aluminium frames to maximise strength and storage space
- Hinged seat and bed tops supported in open position for easy access
- Mattresses and seat cushions supported by beech slats for extra comfort

- Sprung interior mattresses, seat and backrest cushions
- Seat and backrest ventilation boards
- Chest of drawers with occasional table (model specific)
- Free-standing table with dedicated storage location
- 2 x scatter cushions
- Bolster cushions or armrests
- Twin curtain track for improved hanging and ease of use
- Removable carpets over woodblock effect vinyl flooring
- Analogue clock

## Kitchen

- **NEW** 107 litre fridge with curved door, electronic ignition and digital controls for energy selection and temperature (except 540)
- **NEW** 147 litre fridge/freezer with curved door, electronic ignition and digital controls for energy selection and temperature (540 only)
- Recessed stainless steel bowl removable drainer with dedicated storage
- Food grade nylon chopping board with dedicated storage
- Chrome finish brass pillar tap with long spout
- Belling thermostatic oven and separate grill

- Belling dual fuel hob with 800W electric hotplate and 3 gas burners with electronic ignition and flame failure protection
- Glass hob lid with safety cut-out feature
- Built-in microwave oven
- Moulded cutlery drawer on smooth steel runners

## Washroom

- Fully fitted luxury washroom with shower cubicle
- Thetford cassette toilet with independent tank and electric flush
- Chrome finish mixer taps and shower equipment
- Multi-directional rooflight with flyscreen
- Opening window

## Fittings and Equipment

- Cassette flyscreens and blinds on all windows (Concertina on sides and rear)
- Full height door flyscreen
- Omnivent 3-speed fan and skylight
- Multi-position 'Mini-Heki' clear rooflight with flyscreen and blind (model specific)
- Gas regulator for Propane and Butane mounted on front bulkhead

- Isolation taps for gas appliances
- Smoke alarm
- Entrance step
- Entrance mat with embroidered logo in tray
- Domestic style cabinet hinges

## Heating and Plumbing

- Dual fuel gas and 800W mains electric storage water heater
- Dual fuel 3kW gas and 2kW electric space heater
- Blown air system ducted to living, sleeping and washroom areas
- Grade 2 classification for heating and thermal insulation
- Internal fresh water tank (40 litres)
- Wheeled waste water tank (22 litres)
- Inboard semi-rigid fresh water pipes
- Submersible water pump with external connection point
- Large bore underslung rigid waste pipes

## Electrical

- Fully protected mains electric system with three 230V sockets
- 18 amp switchmode charger/transformer
- 12V control panel with battery state meter, awning light and water pump switches

- Key-fob operated entry light and 12V isolation
- Solar panel connection provision
- **NEW** radio/CD/MP3 player
- **NEW** DVD socket and wiring for optional DVD player
- Omni-directional TV/FM aerial and booster
- TV station with 230V, 12V and coax aerial sockets
- Mains lights on front locker corner panels
- Halogen ceiling lights in living and washroom areas
- Halogen downlight in kitchen
- Halogen adjustable spotlights in lounge and sleeping areas
- 25 metre mains hook-up cable

## Safety and Security

- **NEW** - Two AL-KO Secure portable wheel locks
- Passive infra-red alarm system with tilt sensor and key fob operation
- CRiS identity number etched to windows and caravan chassis
- Concealed security data chip within caravan construction
- Single key for all locks
- All models comply with British and European safety standards

Spectrum  
Features



# 520

# 535

# 540

# 620

Berths	5
Number of Axles	2
Internal Length (at bed box height)	6.27m/20'7"
Overall Width	2.23m/7'4"
Overall Height (including TV aerial)	2.76m/9'1"
Overall Length	7.95m/26'1"
Mass in Running Order (including tolerance)	1478kg/29.1cwt
Essential Habitation Equipment Payload	105kg/2.1cwt
Personal Effects Payload	150kg/3.0cwt
Optional Equipment Payload	33kg/0.6cwt
Maximum Technical Permissible Laden Mass	1766kg/34.8cwt*
Awning A/A Dimension**	10.50m/34'5"
Tyre Size	175/65 r14 82

### bed sizes

Front Double'	208cm x 180cm/6'10" x 5'11"
or One Single	108cm x 71cm/5'11" x 2'4"
and One Single	190cm x 71cm/6'3" x 2'4"
Rear Double	208cm x 138cm/6'10" x 4'6"
Rear Bunk	192cm x 58cm/6'4" x 1'11"
Side Single (nearside)	
Side Fixed Lower Bunk	
Side Fixed Upper Bunk	
Optional Bunk	

Berths	4
Number of Axles	2
Internal Length (at bed box height)	6.27m/20'7"
Overall Width	2.23m/7'4"
Overall Height (including TV aerial)	2.76m/9'1"
Overall Length	7.95m/26'1"
Mass in Running Order (including tolerance)	1439kg/28.3cwt
Essential Habitation Equipment Payload	105kg/2.1cwt
Personal Effects Payload	140kg/2.8cwt
Optional Equipment Payload	33kg/0.6cwt
Maximum Technical Permissible Laden Mass	1717kg/33.8cwt
Awning A/A Dimension**	10.50m/34'5"
Tyre Size	175/65 r14 82

Berths	4
Number of Axles	2
Internal Length (at bed box height)	6.27m/20'7"
Overall Width	2.23m/7'4"
Overall Height (including TV aerial)	2.76m/9'1"
Overall Length	7.95m/26'1"
Mass in Running Order (including tolerance)	1496kg/29.4cwt
Essential Habitation Equipment Payload	105kg/2.1cwt
Personal Effects Payload	140kg/2.8cwt
Optional Equipment Payload	33kg/0.6cwt
Maximum Technical Permissible Laden Mass	1774kg/34.9cwt
Awning A/A Dimension**	10.50m/34'5"
Tyre Size	175/65 r14 82

Berths	5 opt 6
Number of Axles	2
Internal Length (at bed box height)	6.27m/20'7"
Overall Width	2.23m/7'4"
Overall Height (including TV aerial)	2.76m/9'1"
Overall Length	7.95m/26'1"
Mass in Running Order (including tolerance)	1482kg/29.2cwt
Essential Habitation Equipment Payload	105kg/2.1cwt
Personal Effects Payload	160kg/3.1cwt
Optional Equipment Payload	53kg/1.0cwt
Maximum Technical Permissible Laden Mass	1800kg/35.4cwt*
Awning A/A Dimension**	10.50m/34'5"
Tyre Size	175/65 r14 82

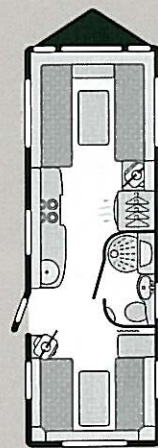
Berths	5 opt 6
Number of Axles	2
Internal Length (at bed box height)	6.27m/20'7"
Overall Width	2.23m/7'4"
Overall Height (including TV aerial)	2.76m/9'1"
Overall Length	7.95m/26'1"
Mass in Running Order (including tolerance)	1482kg/29.2cwt
Essential Habitation Equipment Payload	105kg/2.1cwt
Personal Effects Payload	160kg/3.1cwt
Optional Equipment Payload	53kg/1.0cwt
Maximum Technical Permissible Laden Mass	1800kg/35.4cwt*
Awning A/A Dimension**	10.50m/34'5"
Tyre Size	175/65 r14 82

Front Double'	208cm x 139cm/6'10" x 4'7"
or One Single	
and One Single	
Rear Double	
Rear Bunk	
Side Single (nearside)	
Side Fixed Lower Bunk	
Side Fixed Upper Bunk	
Optional Bunk	

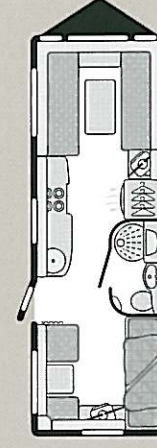
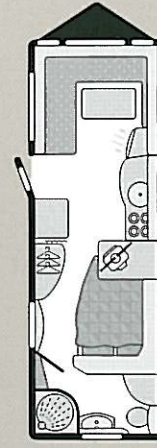
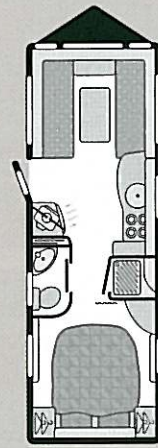
Front Double'	208cm x 180cm/6'10" x 5'11"
or One Single	190cm x 71cm/6'3" x 2'4"
and One Single	180cm x 71cm/5'11" x 2'4"
Rear Double	
Rear Bunk	
Side Single (nearside)	
Side Fixed Lower Bunk	
Side Fixed Upper Bunk	
Optional Bunk	

## Spectrum Specifications

eight.  
size is quoted with wrap round seating.  
ing sizes: Due to the varying awning designs and sizes the  
given are approximate only.  
ing sizes must be confirmed by your dealer or the awning  
prior to purchase.



REVISED



REVISED



All Swift Group models have been certified by the National Caravan Council for compliance with stringent European Standards, British Legislation and industry set Codes of Practice specifically relating to health and safety issues. The approval process covers the testing and inspection of critical areas of the product from fire safety, weights and dimensions, to gas, electrics and ventilation.

Every Abbey caravan carries the "NCC Approved Caravan" badge. The NCC also conduct unannounced inspections at the Abbey factory to ensure continued compliance. NCC Approval gives you peace of mind that your caravan is legal and safe.



For added security all Abbey caravans come registered with the Caravan Registration and Identification Scheme (CRIS), the UK's official database of caravans and their keepers. Abbey caravans not only carry the unique 17 digit CRIS Vehicle Identification Number (VIN) die stamped into the chassis, but windows are also etched with the VIN and an electronic tag embedded within the bodywork for extra security. Specialist insurance companies increasingly require registration with CRIS before granting cover and when you come to sell your caravan your CRIS registration will prove invaluable.

This brochure does not constitute an offer by Swift Group Limited (Swift). Swift reserves the right to alter specifications and prices at any time as materials and conditions demand. Distributors and dealers sell Abbey products on their own account and not as agents of Swift. Accordingly, they have no authority to bind Swift or to make any representation or undertaking whatsoever on behalf of Swift.

The touring caravans described in this brochure are designated by their model year. The model year runs from 1 September to 31 August and the despatch of 2006 models will have commenced on or after 1 September 2005.

All props are for photographic purposes only and are not included in the specification

Cars courtesy of Volvo Cars UK Limited

Issued September 2005

Your Local Dealer



Leaders in Leisure

