

**YOUR 1ST CHOICE FOR  
MORE CHOICE**

- ✓ OVER 300 CARAVANS ON SHOW
- ✓ INDOOR & SEASONAL OUTDOOR CAMPING DISPLAY
- ✓ AWNING DISCOUNT CENTRE
- ✓ ACCESSORIES SUPERMARKET
- ✓ 5 STAR SERVICE CENTRE & REPAIR WORKSHOPS
- ✓ FINANCE & INSURANCE (SUBJECT TO STATUS)

**GUARANTEED A  
WARM WELCOME**

**HIGHBRIDGE**

Caravan and Camping Centre

**OPEN 7 DAYS  
A WEEK**

**01278 782725**

A38, BRISTOL RD, HIGHBRIDGE, SOMERSET, TA9 4EX  
[www.highbridgecaravans.co.uk](http://www.highbridgecaravans.co.uk)

# Bessacarr Caravans

## Cameo Range 2006

Be part of  
something  
special



*Individually styled - beautifully built*

# Welcome to Bessacarr society

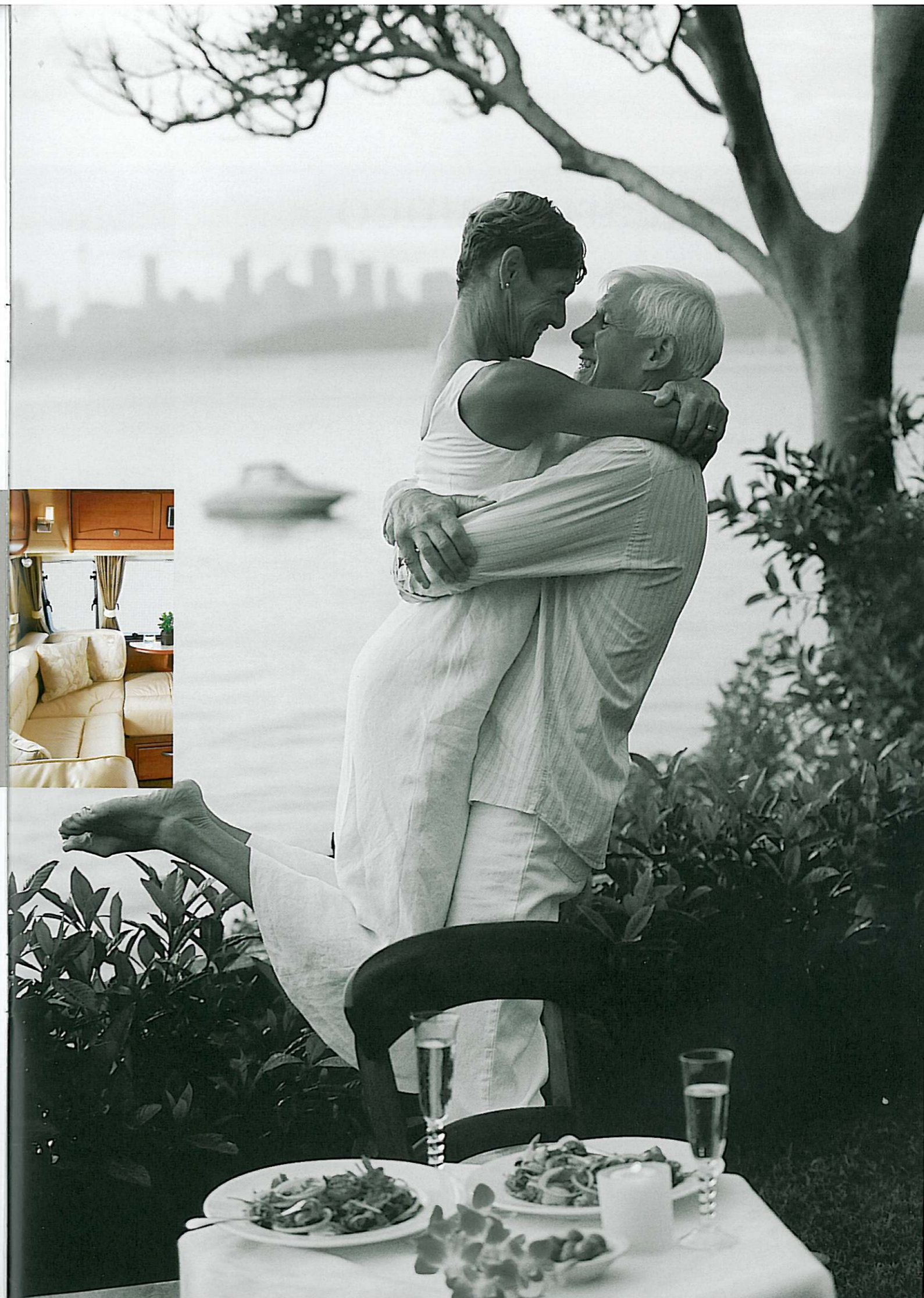
Bessacarr's Cameo collection is enhanced with more new features for 2006 to ensure it remains the ultimate in luxury touring. This prestigious range offers a further twin-axle model, the 645GL, with a separate bedroom featuring a permanent centre bed to enhance the quality of choice in this outstanding five model range.

Quality and service are assured with all models backed by a privileged service from specially selected dealers and a comprehensive three-year manufacturer backed SuperSure warranty, which together provide the freedom to tour with peace of mind.

An eye for  
detail with  
a passion for  
excellence that  
sets us apart

Bessacarr has an active owners club, open to all purchasers of Bessacarr tourers.

Full details can be found by logging onto  
[www.bessacarr-ownersclub.co.uk](http://www.bessacarr-ownersclub.co.uk)



# Bessacarr Cameo

Subtle and tasteful silver and green graphics add a splash of colour to the sleek, glacier white exterior. The front panel with its smooth flowing, rounded lines features stainless steel grab handles while the distinctive rear panel incorporates a full-width grab handle and unique light clusters. Key exterior features include shock absorbers and the latest AL-KO 3004 stabiliser for added towing stability plus AL-KO Secure wheel locks and an alarm system to keep your investment safe.

For those  
who truly  
appreciate  
luxury



All Swift Group models have been certified by the National Caravan Council for compliance with stringent European Standards, British Legislation and industry set Codes of Practice specifically relating to health and safety issues. The approval process covers the testing and inspection of critical areas of the product from fire safety, weights and dimensions, to gas, electrics and ventilation. Every Bessacarr caravan carries the "NCC Approved Caravan" badge. The NCC also conduct unannounced inspections at the Swift Group factory to ensure continued compliance. NCC Approval gives you peace of mind that your caravan is legal and safe.

**CRIS**

For added security all Bessacarr caravans come registered with the Caravan Registration and Identification Scheme (CRIS), the UK's official database of caravans and their keepers. Bessacarr caravans not only carry the unique 17 digit CRIS Vehicle Identification Number (VIN) die stamped into the chassis, but windows are also etched with the VIN and an electronic tag embedded within the bodywork for extra security. Specialist insurance companies increasingly require registration with CRIS before granting cover and when you come to sell your caravan your CRIS registration will prove invaluable.

# Luxury interiors

A choice of three luxurious soft furnishing schemes in either cream leather; Rivoli green or Belmondo gold are available to go with the richly polished Cherry Wave furniture. The living area also features aircraft style upper lockers and suede-effect panels with an electronic clock and weather station on a central wooden panel. Reclining front seats, cocktail cabinet, leather strap umbrella stand and new DVD/CD/MP3 player come as standard. Loose fit carpets over wood block effect vinyl flooring are easily removed for cleaning.

The Bessacarr  
Cameo  
~  
A tourer of  
distinction



Every detail  
is carefully  
planned to  
enhance your  
enjoyment



# Cook in style dine in comfort

Kitchens offer extensive worktop and cupboard space. As well as a new, larger fridge with stylish curved door, there is a Stoves cooker, microwave oven, extractor fan, chopping board and removable drainer. A modern stainless steel kitchen rail with hooks and condiment set is both attractive and useful and some models have a matching kitchen roll holder.

Innovative  
use of space  
and thoughtful  
design



# A good night's rest in the finest beds

Five innovative layouts offer an excellent choice of living and sleeping arrangements, all beds are quick and easy to assemble, whether you want room for two to sleep in luxury or the option to sleep a family of four; there is a layout for you. Domestic quality bedding combined with beech sprung bed slats give superior levels of comfort and cushion support whilst cantilever hinged bed tops provide easy access to storage.

Sumptuous, fitted  
beds with  
domestic quality  
sprung mattresses



# Contemporary washrooms

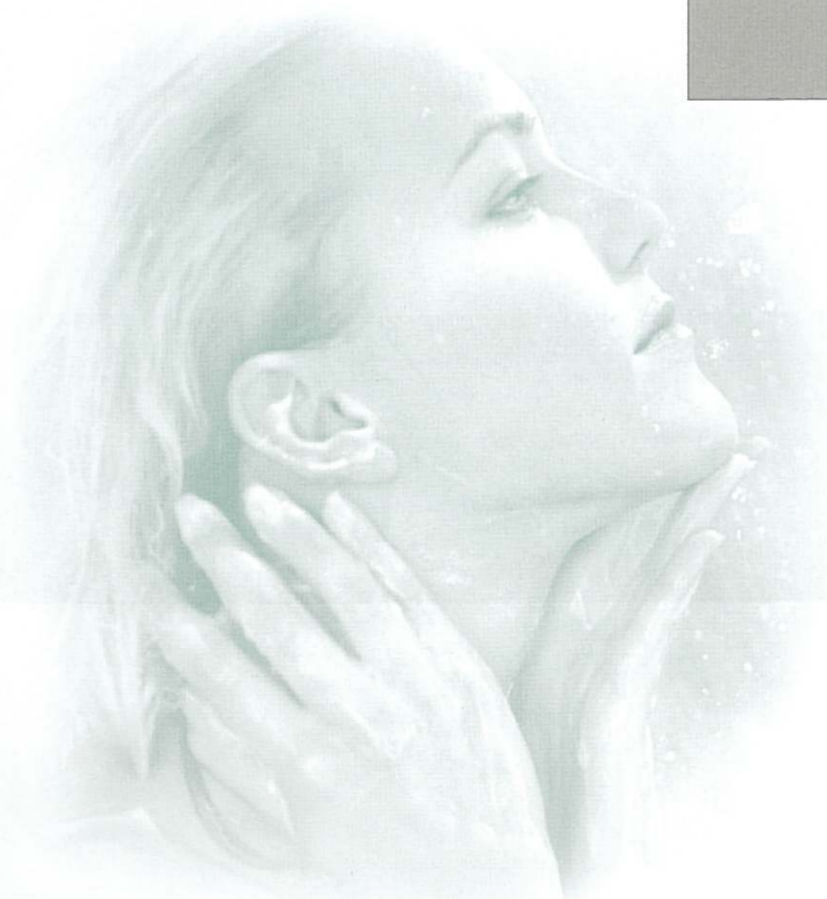
The Cameo offers an outstanding level of specification and the very latest in washroom design. Each model has been carefully detailed to provide the comfort and storage you need. Quality, modern features include stylish wallboard panelling, contemporary chrome finish equipment, separate sealed circular shower units and electric flush Thetford toilets.

Stylish and  
functional



Curtains not included

550GL





# Cameo Features

## Body and Exterior equipment

- Overall body width 2.23m / 7'4"
- AL-KO galvanised steel chassis with Euro-Axle(s)
- Shock absorbers
- AL-KO Euro overrun device with two-way assisted handbrake
- AL-KO AKS 3004 Stabiliser
- **NEW** AL-KO side mountable jack
- Heavy duty corner steadies, lockable at the rear
- Hitch and A-frame cover with gas compartment light and plug tidies
- 15" Alloy wheels - single axle models
- 14" Alloy wheels - twin axle models
- Spare wheel on underslung carrier (steel on twin-axle models)
- Moulded full height front panel with stainless steel grab handles, three opening windows and door with gas struts
- Moulded rear panel with full width grab handle, spoiler, high-level brake light and unique rear light clusters
- Flush fitting, aluminium framed double-glazed opening windows with night ventilation position
- Seitz one-piece entrance door with opening window with integral blind and flyscreen
- Exterior access battery box with aerial inlet and mains electric inlet (battery not included)
- Lined external access locker with 230V external socket
- External access door under fixed bed (625GL)
- Gas barbecue point with isolation valve
- Flush fitting awning light on both sides
- Side direction indicator repeater lights
- Fixing points for rear-mounted cycle rack
- 25mm 'sandwich' sidewalls with HD polystyrene insulation core
- 32mm semi-'sandwich' roof with HD polystyrene insulation core
- 44mm 'sandwich' floor with styrofoam insulation core

## Living Area

- Soft furnishings in Rivoli Green, Belmondo Gold (no-cost options) or cream leather/Rivoli (cost option)

- Large upper lockers with ash-framed doors and push locks
- Rolled edged hardwood mouldings to worktops and tables
- Fixed bed with aluminium frame to maximise strength and storage space (625GL & 645GL)
- 6'3" long front bed (model specific)
- Adjustable head/backrest to front single beds
- Hinged seat and bed tops supported in open position for easy access
- Mattresses and seat cushions supported by beech slats for extra comfort
- Sprung interior mattresses, seat and backrest cushions
- Seat and backrest ventilation boards
- Wrap-around front seating with occasional coffee table or optional chest of drawers
- Free-standing table with dedicated storage location
- 4 x scatter cushions
- Bolster cushions
- Twin curtain track for improved hanging and ease of use
- Removable carpets over woodblock effect vinyl flooring

## Kitchen

- **NEW** 107 litre fridge with curved door, electronic ignition and digital controls for energy selection and temperature (except 625GL)
- **NEW** 147 litre fridge/freezer with curved door, electronic ignition and digital controls for energy selection and temperature (625GL only)
- Recessed stainless steel bowl
- Removable drainer with dedicated storage
- Food grade nylon chopping board with dedicated storage
- Chrome finish brass pillar tap with long spout
- Stoves thermostatic oven and separate grill
- Stoves dual fuel hob with 800W electric hotplate and 3 gas burners with electronic ignition and flame failure protection
- Glass hob lid with safety cut-out feature
- Built-in microwave oven



Dometic extractor fan



Alde heating/hot water system



Adjustable headrest



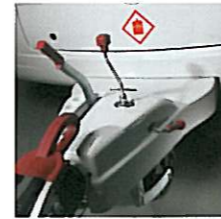
Coffee table



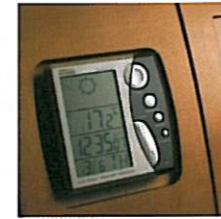
Panoramic skylight



Door with opening window



AKS 3004 stabiliser



Clock and weather station



107 litre fridge



Underseat storage



DVD/CD/MP3 player/radio



AL-KO Secure wheel lock

- Domestic style extractor fan with two-speed fan and 2 halogen lights
- Slide-out storage rack (model specific)
- Stainless steel kitchen rail with hooks, condiment set and kitchen roll holder (model specific)

## Washroom

- Fully fitted luxury washroom with shower cubicle
- Thetford cassette toilet with independent tank and electric flush
- Chrome finish mixer taps and shower equipment
- Multi-directional rooflight with flyscreen
- Opening window
- Removable hanging rail in shower (model specific)

## Fittings and Equipment

- Electrically operated panoramic skylight with pleated blind and flyscreen (2 on 625GL & 645GL)
- Clear standard size skylight(s) with pleated blind and flyscreen
- Cassette flyscreens and blinds on all windows (Pleated on sides and rear)
- Electronic clock and weather station
- Gas regulator for Propane and Butane mounted on front bulkhead
- Isolation taps for gas appliances
- Smoke alarm
- Entrance step

- Entrance mat with embroidered logo in tray
- Umbrella stand
- Domestic style cabinet hinges
- Bunk ladder (when bunks fitted)

## Heating and Plumbing

- Alde radiator central heating and hot water system and with programmable timer/thermostat (twin-axle models)
- Dual fuel gas and 800W mains electric storage water heater (single-axle models)
- Dual fuel 3kW gas and 2kW electric space heater (single-axle models)
- Blown air system ducted to living, sleeping and washroom areas (single-axle models)
- Grade 2 classification for heating and thermal insulation (for use in low ambient temperatures)
- Internal fresh water tank (40 litres) with filling pump and level gauge
- Main water connection point
- Self-priming water pump
- Wheeled waste water tank (22 litres)
- Large bore underslung rigid waste pipes

## Electrical

- Fully protected mains electric system with four internal 230V sockets and one external
- 18 amp switchmode charger/transformer
- 12V control panel over exterior door
- Programmable timer for Alde heating system (twin-axle models)
- Solar panel connection provision

- **NEW** DVD/CD/MP3 player/radio
- Two TV stations with 230V, 12V and coax aerial sockets

- **NEW** DVD socket output socket at one TV station

- Status 530 directional TV/FM aerial and booster

- Mains lights with dimmer control on front locker corner panels

- Halogen ceiling lights in living and washroom areas

- Halogen downlights in kitchen

- Halogen adjustable spotlights in lounge and sleeping areas

- Low-level entrance area light

- Key-fob operated entry light and 12V isolation

- 25 metre mains hook-up cable

## Safety and Security

- **NEW** AL-KO Secure portable wheel lock(s) - one for single-axle models and two for twin-axle models

- Passive infra-red alarm system with tilt sensor and key fob operation

- Lockable rear corner steadies (padlock not supplied)

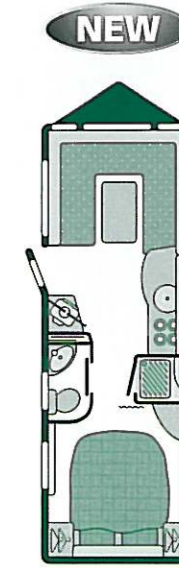
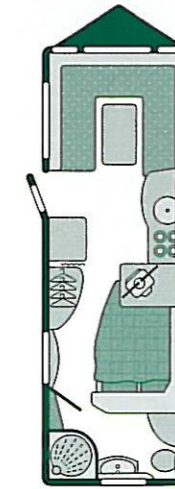
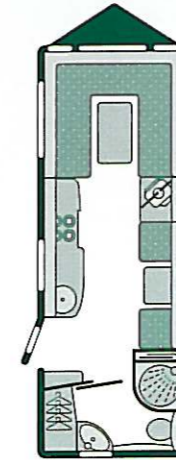
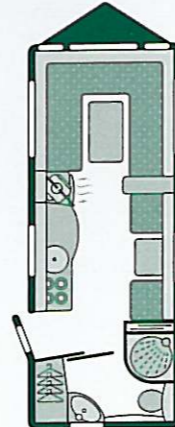
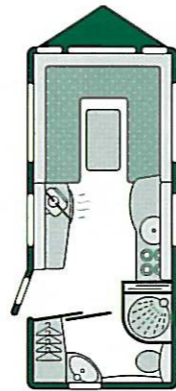
- CRiS identity number etched to windows and caravan chassis

- Concealed security data chip within caravan construction

- Single key for all locks

- All models comply with British and European safety standards

# Cameo Specifications



| Model                                       | 495SL                      | 525SL                       | 550GL                       | 625GL                       | 645GL                       |
|---|----------------------------|-----------------------------|-----------------------------|-----------------------------|-----------------------------|
| Berths                                      | 2                          | 3 (opt 4)                   | 3 (opt 4)                   | 4                           | 4                           |
| Number of Axles                             | 1                          | 1                           | 2                           | 2                           | 2                           |
| Internal Length (at bed box height)         | 4.78m/15'8"                | 5.43m/17'10"                | 5.85m/19'2"                 | 6.27m/20'7"                 | 6.27m/20'7"                 |
| Overall Width                               | 2.23m/7'4"                 | 2.23m/7'4"                  | 2.23m/7'4"                  | 2.23m/7'4"                  | 2.23m/7'4"                  |
| Overall Height (including TV aerial)        | 2.68m/8'10"                | 2.68m/8'10"                 | 2.68m/8'10"                 | 2.68m/8'10"                 | 2.68m/8'10"                 |
| Overall Length                              | 6.43m/21'1"                | 7.08m/23'3"                 | 7.50m/24'7"                 | 7.92m/26'0"                 | 7.92m/26'0"                 |
| Mass in Running Order (including tolerance) | 1300kg/25.6cwt             | 1398kg/27.5cwt              | 1499kg/29.5cwt              | 1610kg/31.7cwt              | 1569kg/30.9cwt              |
| Essential Habitation Equipment Payload      | 105kg/2.1cwt               | 105kg/2.1cwt                | 105kg/2.1cwt                | 105kg/2.1cwt                | 105kg/2.1cwt                |
| Personal Effects Payload                    | 105kg/2.1cwt               | 131kg/2.6cwt                | 136kg/2.7cwt                | 140kg/2.8cwt                | 140kg/2.8cwt                |
| Optional Equipment Payload                  | 40kg/0.8cwt                | 60kg/1.2cwt                 | 60kg/1.2cwt                 | 40kg/0.8cwt                 | 40kg/0.8cwt                 |
| Maximum Technical Permissible Laden Mass    | 1550kg/30.6cwt             | 1694kg/33.4cwt              | 1800kg/35.5cwt              | 1895kg/37.4cwt              | 1854kg/36.6cwt              |
| Awning A/A Dimension††                      | 9.10m/29'10"               | 9.74m/32'0"                 | 10.07m/33'0"                | 10.49m/34'5"                | 10.49m/34'5"                |
| Tyre Size                                   | 205/65 r15 102             | 195/70 r15 104              | 175/65 r14 82               | 175/65 r14 86               | 175/65 r14 86               |
| <b>Bed sizes</b>                            |                            |                             |                             |                             |                             |
| Front Double†                               | 208cm x 190cm/6'10" x 6'3" | 208cm x 180cm/6'10" x 5'11" | 208cm x 180cm/6'10" x 5'11" | 208cm x 180cm/6'10" x 5'11" | 208cm x 180cm/6'10" x 5'11" |
| or one Single                               | 190cm x 71cm/6'3" x 2'4"   | 190cm x 71cm/6'3" x 2'4"    | 190cm x 71cm/6'3" x 2'4"    | 190cm x 71cm/6'3" x 2'4"    | 180cm x 71cm/5'11" x 2'4"   |
| and one Single                              | 190cm x 71cm/6'3" x 2'4"   | 180cm x 71cm/5'11" x 2'4"   | 190cm x 71cm/6'3" x 2'4"    | 180cm x 71cm/5'11" x 2'4"   | 175cm x 71cm/5'9" x 2'4"    |
| Rear Double                                 |                            |                             |                             | 192cm x 138cm/6'4" x 4'6"   | 186cm x 134cm/6'1" x 4'5"   |
| Side Single (offside)                       |                            | 180cm x 66cm/5'11" x 2'2"   | 180cm x 66cm/5'11" x 2'2"   |                             |                             |
| Side Single (nearside)                      |                            |                             |                             |                             |                             |
| Optional Side Bunk                          |                            |                             |                             |                             |                             |
| Optional Bunk                               |                            | 178cm x 56cm/5'10" x 1'10"  | 178cm x 56cm/5'10" x 1'10"  |                             |                             |

† Front double bed sizes quoted with wrap round seating.

†† Note on awning sizes: Due to the varying awning designs and sizes the awning sizes given are approximate only. Specific awning sizes must be confirmed by your dealer or the awning manufacturer prior to purchase.