

Your Avondale authorised distributor is:

# The 2007 Avondale Tourer Range



**Avondale Coachcraft Ltd**

Carlyon Road, Atherstone,  
Warwickshire CV9 1JE

Tel: 01827 715231

Fax: 01827 716446

[www.avondalecaravans.co.uk](http://www.avondalecaravans.co.uk)



We would like to thank the following for their assistance in the production of the 2007 Avondale brochure  
Locations: Smallwood Manor Preparatory School Uttoxeter - Biggin Moore Farm, Derbyshire - Lodore Falls Hotel, Cumbria  
Platty+ Water Sports - Guy Salmon Jaguar, Coventry - Francis Honda, Leicester

Avondale is a corporate member of Warwickshire Wildlife Trust



Avondale Coachcraft Limited is constantly seeking ways by which its range of caravans may be further improved. The company reserves the right to alter specifications of its caravans at any time without notice. The illustrations and descriptions in this brochure are intended as a general guide only and must not be taken as binding. Avondale Coachcraft Limited does not accept liability and shall not be liable for injury or consequential loss or damage, however caused arising from the illustrations and descriptions in this brochure. Nothing in this brochure shall be deemed to constitute a contract by Avondale Coachcraft Limited.



DART • ARGENTE • AVONDALE • LAND-RANGER

# Welcome to Avondale's 2007 collection

*We are committed to pushing the boundaries of design and comfort throughout 2007 and beyond.  
We look forward to continuing to provide our customers with stunning caravans.*

*This year sees the launch of the all new Dart - The lighter, stronger, low cost family caravan. Designed for the discerning, offering the very best in quality and interior design.*

*Whichever tourer you choose from the Avondale 2007 range you will benefit from our standard key features:*

- 5 Year factory backed weatherseal warranty
- Side mounted gas locker for ease of use with good weight distribution
- 3 Year factory backed general warranty
- Manufactured to meet the European Design Standard EN-1 645-1

## Contents

### Pages 4,5,6 & 7 Dart

380-2  
470-2  
510-5  
525-4  
545-4  
556-6

### Pages 8,9,10 & 11 Argente

390-2  
480-2  
530-5  
550-4 S/L  
555-4 S/L  
640-6  
642-4  
650-6

### Pages 12,13,14 & 15 Avondale

Avocet S  
Osprey S/L  
Eagle S/L

### Pages 16 & 17 Landranger

6400 EB S/L  
6400 DD S/L

### Pages 18 & 19 Features & Specifications

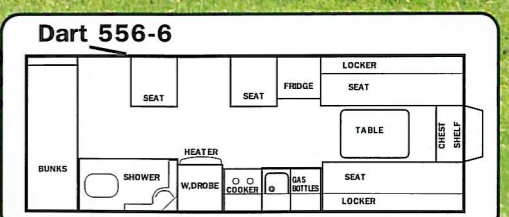
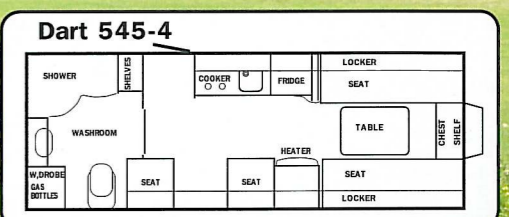
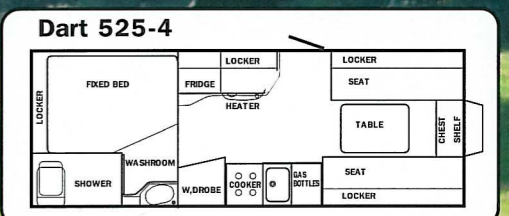
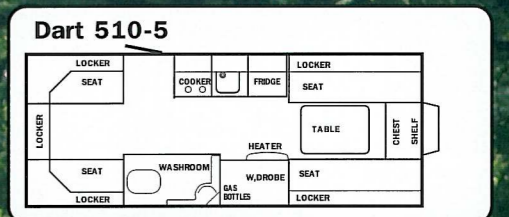
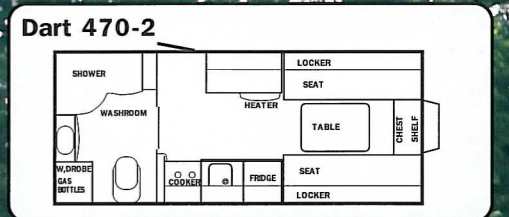
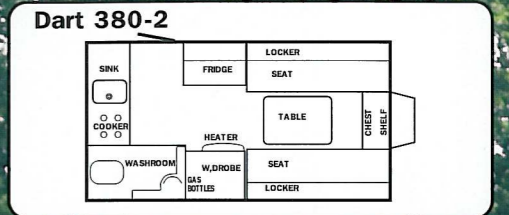
*This is why Avondale is truly home from home*



# The Dart

*Lighter, stronger & lower in cost...*

*...All new but the colour*



# The Dart

*Tried & proven by couples and families alike, there's a Dart layout to suit your requirements. The compact 380-2 is possibly the lightest weight traditional two berth available today. Alternatively the 470-2 end washroom model provides spacious accommodation for two. Four more family friendly layouts complete the Dart range.*

*The 510-5 five berth maximises living space with a separate front and rear lounge area, the latter converting into an end bedroom. The all new 525-4 has a fixed bed and side washroom. Ideal for the discerning holidaymaker looking for a two bed tourer.*

*The four berth 545-4 has a side dinette combined with a spacious end washroom with separate shower cubicle. The award winning 556-6 is the ideal six berth family model, combining a side dinette and two rear fixed bunks, giving children and parents their own space.*



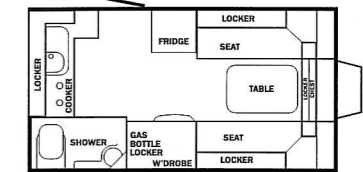
Dart 545-4  
Mocha Scheme

# The Argente

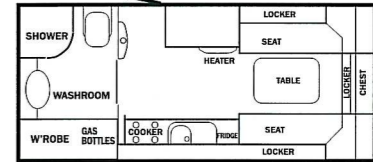
*Step into the Argente and prepare to relax*



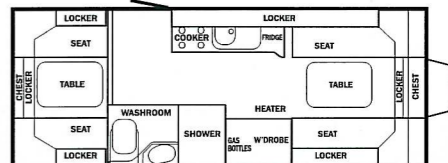
**Argente 390-2**



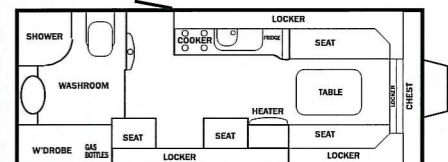
**Argente 480-2**



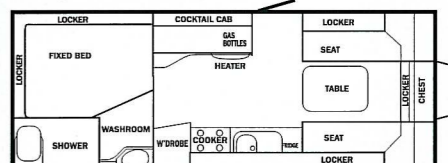
**Argente 530-5**



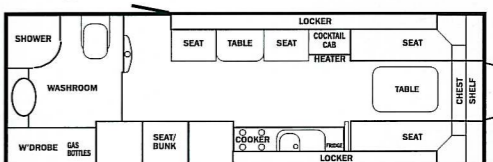
**Argente 550-4**



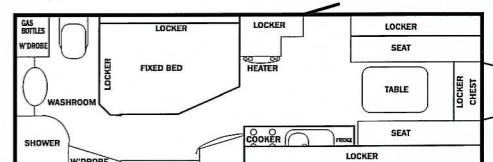
**Argente 555-4**



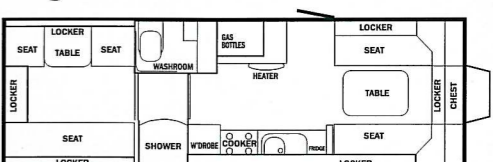
**Argente 640-6**



**Argente 642-4**



**Argente 650-6**



# The Argente

*This range combines stylish exteriors and beautiful interiors in practical award winning layouts. The exciting body mirrors that of the club class Avondale and Landrangers, it's width designed for easier towing, access and manoeuvrability. Beautiful fresh furniture innovations are perfectly executed in a modern Elm wood finish. Kitchen areas include stainless steel sinks and provision for a microwave oven. End washroom models are equipped with a superb vanity unit and rotary door sealed shower cubicle. Practical removable carpets and a choice of gorgeous Cajun or Tobago upholstery schemes complete the Argente's specification for 2007.*

*Step into a new Argente and prepare to relax. With ten models in the range from a compact two-berth to a spacious twin axle six-berth, we give you the power to choose a layout that's right for you!*

#### *Two-berth models*

*The 390-2 is a compact end kitchen layout where space and / or weight are a consideration. The award winning 480-2 has a beautiful end washroom and practical side kitchen.*

#### *Single axle family models*

*The family five-berth 530-5 has a spacious washroom with separate shower and rear dinette with sprung upholstery. Brand new for this year the fixed bed four-berth 555-4 combines an 'L' or 'S' shaped lounge, luxury washroom with separate shower area and spacious fixed bed. The award winning 550-4 'S' or 'L' layouts have side dinette and spacious end washroom making it the ideal four-berth family tourer.*

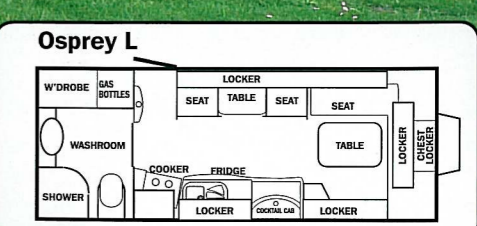
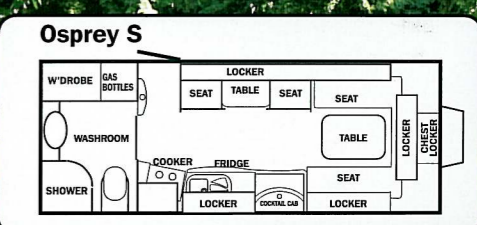
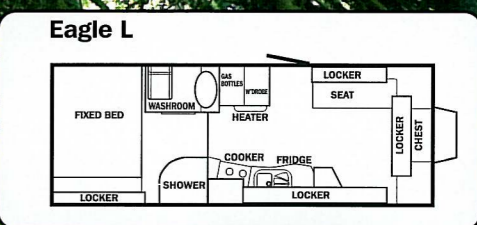
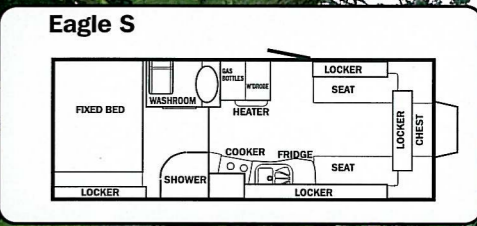
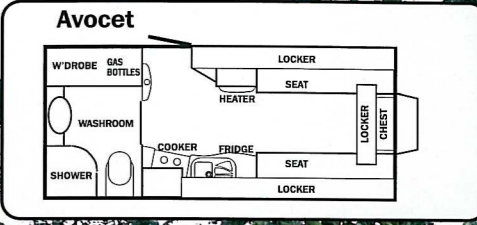
#### *Twin axle family models*

*Award winning layouts designed for families who enjoy the outdoors but want acres of living space! The fixed bed 642-4 has a new layout, it's central bedroom adjoins a beautiful en-suite rear washroom. Families love the 640-6 with it's long fixed bunks, a side dinette and end washroom with separate shower cubicle. The twin lounge six-berth 650-6 was last year's Practical Caravan magazine's Best Family Caravan - what more can we say!*

Argente 642-4  
Tobago Scheme

10

11



# The Avondale

*Club class luxury!*

# The Avondale

Now established as the Club Class leader, the range has been further improved with upgraded washrooms to the Osprey and Avocet. A new luxurious bedroom is the addition to the Eagle.

The Avondale range continues its award winning heritage and is proud to be the definitive tourer against which others are judged. Stunning new external body designs lead you into the true class of a new Avondale, with interiors that give an unrivalled ambience of club class comfort and luxury.

As you would expect from a class leader the specification comprises a range of items to make your holidays special including FM radio/cd player, directional tv aerial, domestic style cooker, omnivent fan, microwave oven, loose fit carpets, remote control alarm system and fully sprung upholstery in a choice of gorgeous new Winchester or Ashford upholstery schemes.

Three class leading models are available to suit your requirements:

- The two berth Avocet features a beautiful lounge, practical kitchen and spacious newly designed end washroom with new double wardrobe.
- The fixed bed Eagle's lounge is available with a choice of traditional straight or 'L' shaped seating. The rear sleeping accommodation features a full size transverse fixed bed and centre changing room with toilet and a separate lined shower cubicle.
- The Osprey's traditional side dinette end washroom layout is spacious for couples and families alike. Its magnificent kitchen has oodles of fabulous work space, and is complemented by a choice of traditional straight or 'L' shaped lounge seating and wonderful newly designed and extended end washroom.

Avocet  
Ashford Scheme



# The Landranger

*The definitive twin axle tourer*

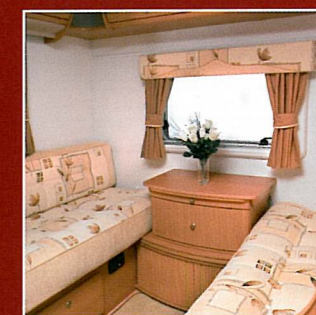


# The Landranger

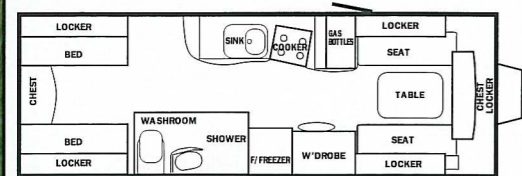
*Each of the class leading Landrangers combines luxurious accommodation with beautiful craftsmanship in two of the most popular twin axle layouts available in the all new Winchester or Ashford upholstery schemes.*

*The double dinette 6400DD is an ideal family layout with twin front and rear dinettes providing ample living and sleeping accommodation. This model has a luxury washroom incorporating a separate shower cubicle.*

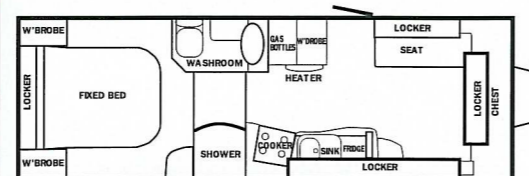
*The fixed bed 6400EB is perfect for couples or families requiring the added comfort and convenience of a fixed island bed, along with a separate dressing area complete with it's own shower cubicle.*



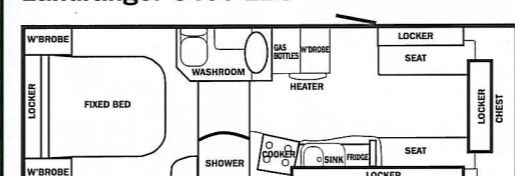
**Landranger 6400 DD S**



**Landranger 6400 EBL**



**Landranger 6400 EBS**



## Model

Dart Argente Avondale Landranger

	Dart	Argente	Avondale	Landranger
<b>Kitchen</b>				
Cooker - New domestic style with 4 burner hob, separate grill & oven	●E 3 Burner	●E	●E	●E
Down lights - halogen	●	●	●	●
Fridge - 77 litre New 'Power' with full width freezer	●	●E		
Fridge - 86 litre New 'Power' with full width freezer			●E	●E(EB models)
Fridge Freezer				●E(DD models)
Microwave Oven (model may vary)			●	●
Tap - Domestic style mixer (NEW)	●	●	●	●
Integrated stainless sink, reversible drainer & chopping board	●			
Sink stainless steel, glass cover		●	●	●
Bed basket, large front (Parallel bed models)			●	●
Bed - fixed doubles slatted mechanism (NEW)		●	●	●
Bed locker tops slatted	●	●	●	●
Front bed locker tops - lift & stay (NEW)	●	●G	●G	●G
Bunk bed ladder (where applicable) (NEW)	●	●	●	●
Carpet - removable	●	●	●	●
Chest - top extending ('S' lounge models only)	●	●	●	●
Cocktail cabinet	●	●	●	●
Door mat	●	●	●	●
Door - opening picture window/flyscreen (NEW)	●	●	●	●
Flyscreens & blinds (where possible)	●	●		
Flyscreens & blinds cassette/concertina (NEW)			●	●
Heating Truma blown air system	3002	3002E	3002E	3002E
Omnivent roof light fan		○	●	●
Super sun roof - sliding	●	●	●	●
Table stowage for NEW Super Stable table	●	●	●	●
Upholstery sprung (except bunks)	●	●	●	●
<b>Washroom</b>				
Pedestal cassette toilet with header tank	●	●	●E	●E
Removable carpet (rear washrooms)	●	●	●	●
Shower	●	●	●	●
Shower cubicle fully lined		●(1)	●	●
Water heater (gas & electric)	●	●	●	●
Awning light (R=Remote Control)	●	●	R	R
Courtesy entry light switch	●	●	●	●
Lighting - ceiling	●	●	●	●
Lighting - front reading	4	4	4	4
Low level night light			●	●
Mains connection lead	●	●	●	●
Mains sockets	2	3	3	3
Radio speakers	○	●	●	●
Stereo radio/CD player	○	●	●	●
Under bunk lamp (side bunks)	●	●	●	●
12v/TV aerial socket	1	2 (555-4L 1)	2 (Eagle L 1)	2
230v exterior mains socket		●	●	●
Gas locker - side mounted	2x7kg	2x7kg	2x7kg	2x7kg
Gas point - exterior BBQ		●	●	●
High level tail light		Brake	Brake	Brake
Outdoor equipment locker	●	●	●	●
Stabiliser AKS 3004		●	●	●
TV aerial & booster	●	●	●	●
TV aerial - Status directional telescopic			●	●
Wheels - alloy		●2/4	●2	●4
Al-ko Secure		○	○	○
Alarm		●	● with remote control*	● with remote control*
Alarm - additional key fob (2)		○	○	○
Identity number on windows & chassis	●	●	●	●
Security tag - hidden electronic	●	●	●	●
Spare wheel (Steel)	○	●	●	●
Spare Wheel well (under floor)		●	●	●
Warranty - 5yrs water ingress, 3yrs general (3)	●	●	●	●
<b>Other</b>				

KEY: ●Fitted as standard ○Optional E=Electronic \*With 2 key fobs  
G=Gas strut assisted

Note: (1) = Except 390-2

Note: (2) = Option must be fitted at time of original manufacture

Note: (3) = Warranty is offered subject to annual services

Options may only be fitted provided the MTPLM is not exceeded

18

## Upholstery

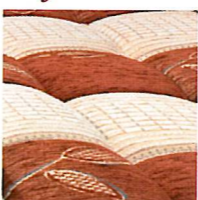
### Dart Mocha



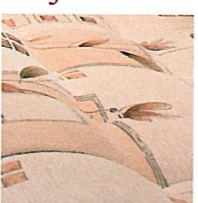
### Argente Tobago



### Cajun



### Avondale & Landranger Ashford



### Winchester



## Specifications

### Dart

External Height: 2590mm External Width: 2085mm Internal Headroom: 1930mm Tyres: 165 R13

Model	Berths	Internal Length	External Length	MTPLM	Awning Guide	Bed Sizes
380	2	3857mm	4287mm	1000kg	7957mm	2 singles at 1820mm x 700mm, 1 double at 1980 x 1820mm
470	2	4807mm	5237mm	1120kg	8907mm	2 singles at 1820mm x 700mm, 1 double at 1980 x 1820mm
510	5	5175mm	5605mm	1210kg	9275mm	2 singles at 1710mm x 700mm, 1 double at 1980 x 1710mm, 1 rear double at 1980mm x 1245mm, 1 upper bunk at 1900mm x 500mm
525	4	5550mm	5980mm	1240kg	9650mm	1 single at 1820mm x 700mm, 1 single at 1700 x 700mm, 1 double at 1980mm x 1700mm, 1 fixed double at 1810mm x 1270mm
556	4	5550mm	5980mm	1280kg	9650mm	2 singles at 1820mm x 700mm, 1 double at 1980 x 1820mm, 1 lower bunk at 1830mm x 630mm, 1 upper bunk at 1765mm x 540mm, 1 fixed top bunk at 1980mm x 625mm, 1 fixed lower bunk at 1980mm x 635mm
545	6	5550mm	5980mm	1240kg	9650mm	2 singles at 1820mm x 700mm, 1 double at 1980 x 1820mm, 1 lower bunk at 1820mm x 630mm, 1 upper bunk at 1750mm x 540mm

### Argente

External Height: 2560mm External Width: 2220mm Internal Headroom: 1930mm  
Tyres: 175 R14 99N (640, 642 & 650 175 R14 82T)

Model	Berths	Internal Length	External Length	MTPLM	Awning Guide	Bed Sizes
390	2	4005mm	4385mm	1150kg	8110mm	2 singles at 1815mm x 700mm, 1 double at 2080 x 1815mm
480	2	4850mm	5230mm	1300kg	8955mm	2 singles at 1815mm x 700mm, 1 double at 2080 x 1815mm
530	5	5550mm	5930mm	1450kg	9655mm	2 singles at 1815mm x 700mm, 1 double at 2080 x 1815mm, 1 rear double at 2080mm x 1255mm, 1 bunk at 2020mm x 540mm
550 S	4	5550mm	5930mm	1450kg	9655mm	2 singles at 1815mm x 700mm, 1 double at 2080 x 1815mm, 1 lower bunk at 1830mm x 635mm, 1 upper bunk at 1720mm x 540mm
550 L	4	5550mm	5930mm	1450kg	9665mm	1 double at 2080 x 1400mm, 1 lower bunk at 1830mm x 635mm, 1 upper bunk at 1720mm x 540mm
555 S	4	5550mm	5930mm	1450kg	9665mm	2 singles at 1720mm x 700mm, 1 double at 2080 x 1720mm, 1 fixed double at 1805mm x 1370mm
555 L	4	5550mm	5930mm	1450kg	9665mm	1 double at 2080 x 1400mm, 1 fixed double at 1805mm x 1370mm
640	6	6470mm	6850mm	1700kg	10575mm	1 single at 1815mm x 700mm, 1 single at 1830mm x 700mm, 1 double at 2080 x 1815mm, 1 lower bunk at 1830mm x 625mm, 1 upper bunk at 1735mm x 540mm, 2 fixed bunks at 1840mm x 630mm
642	4	6470mm	6850mm	1650kg	10575mm	1 single at 1805mm x 700mm, 1 single at 1730mm x 700mm, 1 double at 2080 x 1730mm, 1 fixed double at 1900mm x 1325mm
650	6	6470mm	6850mm	1700kg	10575mm	1 single at 1815mm x 700mm, 1 single at 1830mm x 700mm, 1 double at 2080 x 1815mm, 2 rear singles at 1835mm x 700mm, 2 bunks at 1720mm x 530mm

### Avondale

External Height: 2560mm External Width: 2220mm Internal Headroom: 1930mm Tyres: 175 R14 99N

Model	Berths	Internal Length	External Length	MTPLM	Awning Guide	Bed Sizes
Avocet	2	4875mm	5250mm	1350kg	8950mm	2 singles at 1900mm x 700mm, 1 double at 2080 x 1900mm
Eagle S	4	5650mm	6025mm	1500kg	9725mm	2 singles at 1812mm x 700mm, 1 double at 2080 x 1830mm, 1 fixed double at 1920mm x 1360mm
Eagle L	4	5650mm	6025mm	1500kg	9725mm	1 double at 2080 x 1280mm, 1 fixed double at 1920mm x 1360mm
Osprey S	4	5750mm	6125mm	1500kg	9825mm	1 single at 1815mm x 700mm, 1 single at 1895 x 700mm, 1 double at 2080mm x 1815mm, 1 lower bunk at 1830mm x 630mm, 1 upper bunk at 1720mm x 540mm
Osprey L	4	5750mm	6125mm	1500kg	9825mm	1 double at 2080 x 1280mm, 1 lower bunk at 1830mm x 630mm, 1 upper bunk at 1720mm x 540mm

### Landranger

External Height: 2560mm External Width: 2220mm Internal Headroom: 1930mm Tyres: 175 R14 82T

Model	Berths	Internal Length	External Length	MTPLM	Awning Guide	Bed Sizes
EB S	4	6490mm	6865mm	1740kg	10565mm	2 singles at 1812mm x 700mm, 1 double at 2080 x 1812mm, 1 rear double at 1832mm x 1340mm
EB L	4	6490mm	6865mm	1740kg	10565mm	1 double at 2080 x 1812mm, 1 rear double at 1832mm x 1340mm
DD	5	6490mm	6865mm	1740kg	10565mm	2 singles at 1905mm x 700mm, 1 double at 2080 x 1905mm, 1 rear double at 2080mm x 1440mm, 2 singles at 1440mm x 700mm

19

SECURITY - An electronic tag card is fitted to every caravan, in addition all new Avondales are marked with a 17 character vehicle identification number (VIN), die stamped onto a chassis and etched on up to 10 windows. The VIN is recorded on a registration declaration form to be completed by the supplying dealer and sent to CRIS for registration entirely free of charge.