



2007 Buccaneer Touring Caravan Collection



Buccaneer



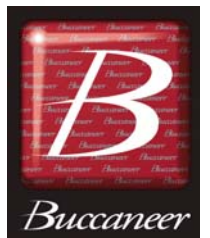


Schooner

Buccaneer 2007 Touring Caravan Collection

Statesman like in appearance, Buccaneer is one of the highest specification touring caravan ranges available today. Offering classic style and comfort across a 6-model line-up, the Elan 15, Caribbean and Argosy single axle, Clipper, Schooner and Caravel twin axle, offer truly affordable, value for money luxury.

Continuous improvement ensures that each season Buccaneer maintains its highly regarded status amongst the most discerning caravan buyers and the 2007 range is no exception.





Buccaneer

Caribbean

Caribbean

Buccaneer

Explorer 2007



Buccaneer 2007 Touring Caravan Collection

Exterior Styling

The 2007 touring caravan range continues in the Buccaneer tradition.

Clean, simple and elegant graphic designs with modern automotive touches give the Buccaneer range a distinctive style all of their own.

The stunning Seitz side and rear flush fitting privacy windows, exclusive to The Explorer Group in the UK, allow you to see out, but prevent your neighbours from seeing in. The tint helps to reflect rays from the sun that damage upholstery and can assist in keeping the interior cooler on the sunniest of days. Glare from the sun is also substantially reduced with minimal effect on the amount of actual light entering the vehicle.

All Buccaneers are built on the impressive BPW Swing V-Tech chassis with a Winterhoff WS3000 stabiliser. Explorers are also the first UK manufacturer to balance all alloy wheels giving you better stability, greatly reduced tyre wear and a smoother ride - A combination of chassis set up that provides superb handling for an unrivalled towing experience.

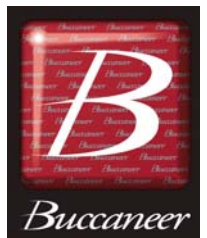
For 2007 we've even introduced a clever nose weight indicator built into the top of the jockey wheel to help you maintain the perfect nose weight and further reduce the risk of instability when towing.

The 'High Power' silver alloy wheels with a distinctive Buccaneer centre cap, and chrome effect rear light clusters and high level marker lights add a real touch of class to the exterior. All Buccaneers come complete with a spare alloy wheel as standard.

The front gas storage locker lifts effortlessly on gas struts to ease access and has been modified to accommodate the new BP Light as well as traditional steel gas cylinders.

Exterior locker doors provide access to under bed storage as well as 230v, 12v and television aerial output sockets. Along with the exterior gas barbecue point and awning warmer outlet, these vehicles are designed for you to make the most of the great outdoors.

The impressive and full 2007 Buccaneer standard specification and optional extras can be viewed to the rear of this brochure.





Schooner

Interior Furnishings and Living Space

The 2007 Buccaneer is packed with a host of improvements as soon as you step through the new one piece exterior door with its opening window and integral privacy blind and fly screen.

Upholstered in the deeply luxurious two-tone Lorenzo, the sprung upholstery is complemented by Stardust beige curtains and Claremount voiles to add a touch of class.

Total relaxation is afforded by the addition of large scatter cushions and decadent bolsters; all piped to blend beautifully.

The front chest of drawers complete with slide out table extension in all parallel lounges is now removable. By simply loosening the two restraining straps the unit is easily removed to create a wraparound seating area with the addition of the optional upholstered base and back rest cushions.

The large Heki roof lights also allow you to control the amount of daylight and ventilation easily within the caravan. They come complete with tensionless pleated blinds and built in fly screens.



Controllable electric lighting comes in the form of soft gold finish 12v eyeball spotlights and 230v wall lights, dual power ceiling and illuminated Heki roof lights. There is even a soft diode light to aid night-time trips to the washroom without disturbing your sleeping family and friends.

The styling continues with new soft gold edged control panels, sockets, light switches and colour coordinated Horrex folding doors.

Rich Aswald Ash veneer woodwork, wallboards and cabinets with soft gold handles, add to the overall feeling of total luxury. Decorative Travertine marble effect laminate is extended to all worktops and cabinets to finish the interior look.

Ample storage space is provided for all your essential touring equipment, clothing and food in the array of overhead lockers, wardrobe space, upholstered cocktail units, cupboards and drawers.

With Dometic air conditioning as standard on twin axles (optional extra on all single axle models), audio speakers to end washrooms and rear bedrooms, we've added even more to Buccaneer's high specification with a DVD/CD/MP3 entertainment center, with radio, and direct access jacking points for your TV and I-Pod/MP3 player.

The Bedroom

Supplied as standard on all fixed beds in the Buccaneer range, the exclusive 'So Comfortable' pocket sprung mattress is a traditional top quality deep sprung system with hundreds of springs encapsulated in individual pockets unsurpassed in the ability to supply all over comfort and support with no roll together. 'So Comfortable' is quite simply the most comfortable touring caravan mattress in the UK – Just try one for yourself!

All fixed beds in the Buccaneer range come with a one-piece metal bed frame with easy lift gas struts. This is designed to give you more comfort and easier access to the under-bed storage area.

The Kitchen

This is one of the most well equipped and practical touring caravan kitchens available.

The Spinflo 3 burner hob with rapid, high-speed multifunction burner can accommodate large saucepans up to 25cm, round and flat bottom woks up to 36cm and frying pans up to 24cm.

The linen effect Argent stainless steel sink is scratch resistant and comes complete with a space saving removable drainer to free up more work surface making meal preparation even easier.

The sink and hob covers are made from virtually unbreakable Chinchilla glass, totally hygienic, odour, scratch and stain resistant, and able to withstand hot pans and roasting dishes.

The removable drainers and the complementary chopping board all store neatly in the bespoke silver washing up bowl which can be left in the sink with the lid down whilst on tow.

Add to this the colour matched Prima Mark3 oven with illumination, 2 shelves and a microwave oven supplied as standard and a simple cooked breakfast to a full Sunday roast are easily catered for.

All twin axle Buccaneers have a 150ltr Dometic 7651L fridge freezer. Whilst the single axle models have the equally elegant RM7291L 93ltr power fridge with its curved Aswald Ash veneer door. Electronic ignition is standard on all models.





Buccaneer Elan 15

The popular Elan 15 is an all time favourite in luxury 2 berths perfect for the discerning caravanner and rallying enthusiast.

This spacious and well proportioned single axle tourer's main feature is the large end washroom with separate circular shower cubicle. A large wardrobe with integral shelving and drawers and an elegant washbasin vanity unit provide plenty of storage. There is even a 'smalls' laundry bag closet beneath the rear window.

The front chest of drawers is removable and optional wraparound upholstery is available.

To help keep the interior in pristine condition, an exterior full height locker with coat hooks and removable shelves is provided, and makes thoughtful use of space in behind the shower.



Elan 15

2 Berth
1 x Double
or
2 x Single beds



Buccaneer Caribbean

The single axle Caribbean is a spacious four berth touring caravan featuring a large front lounge & side dinette.

The front chest of drawers in the lounge area is removable and optional wraparound upholstery is available.

Ideal for a couple on those lazy mornings when you want to slide out of bed & have breakfast without having to put all the beds away. The dinette also converts into 2 bunks; handy for when guests stop by or for children.

The Caribbean benefits from the spacious, award winning end washroom layout with separate shower, a large wardrobe with integral shelving & drawer space, Thetford electronic toilet, elegant washbasin vanity unit and a 'smalls' laundry bag closet.

Completely enclosed from the main living area, you'll have all the space you need to walk round, pamper yourself & dress in complete privacy.

A full height exterior locker is ideal for storing wet coats & muddy boots.



Caribbean

4 Berth
1 x Double
1 or 3 Singles
1 x Bunk bed



Buccaneer Argosy

The award winning Argosy has a spacious 'L' shaped lounge, transverse rear double bed and central washroom, wherein useful shelves for toiletries & storage beneath the washbasin provide plenty of space for all your essentials.

In the rear bedroom a handy full width shelf & storage area for the duvet is provided.

There is also a drop down shelf with 12v, 230v & aerial sockets the perfect place for a television for late night or early morning viewing.

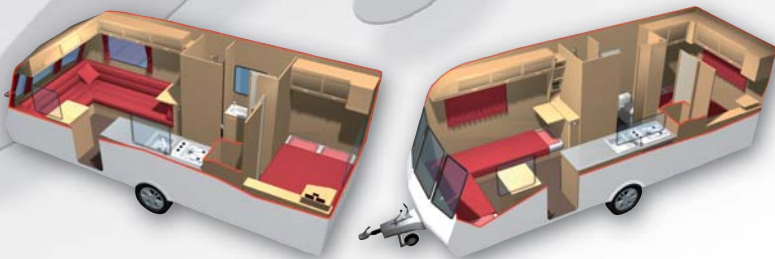
Apart from the luxury of the exclusive 'So Comfortable' mattress, the whole bed with its one-piece metal frame and gas struts lifts effortlessly to reveal a massive storage space beneath, which is also accessible from a lockable exterior access door.

Privacy is assured with the bedroom being completely screened off from the main living area by means of a light weight, colour coordinated Horrex folding door.



Argosy

- 4 Berth
- 1 x Fixed double
- 2 x Fixed single





Buccaneer Clipper

The newest addition to the Buccaneer range, the twin axle Clipper, brings a new twist to one of our most popular Buccaneer layouts.

By providing twin fixed single beds complete with individual 'So Comfortable' domestic quality, pocket sprung mattresses; the Clipper offers a real alternative, but with all the benefits of the Schooner. No need to wake up your sleeping partner when you want to roll out of bed.

Each bed lifts effortlessly on gas struts to reveal plenty of storage space for all your touring essentials.

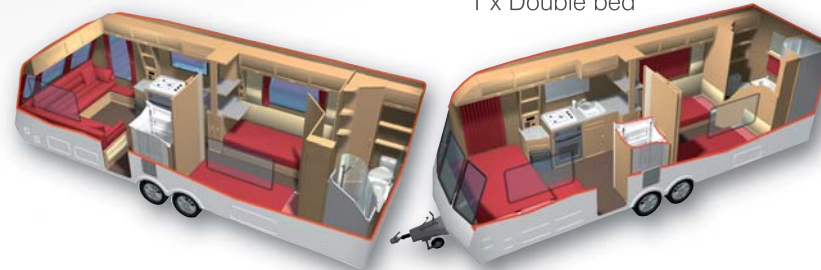
The Clipper has a spacious 'L' shaped lounge and en-suite end washroom, complete with a separate shower cubicle and additional, practical storage solutions.

The versatile kitchen comes complete with the new full height Dometic 7651 L 150ltr fridge freezer.

Dometic air conditioning is standard fit on all twin axle Buccaneers.

Clipper

- 4 Berth
- 2 x Fixed Single beds
- 1 x Double bed





Buccaneer Schooner

With air conditioning for complete comfort whatever the weather, this fixed bed twin axle model offers an extraordinary amount of internal space, mainly due to the L-shaped front lounge.

As with all fixed bed Buccaneers, the Schooner is blessed by the 'So Comfortable' pocket sprung, domestic quality mattress. Beneath which the one piece metal bed frame with gas struts lift effortlessly to reveal a huge storage space that is also accessible from outside via an exterior locker door.

The bedroom can be completely screened off from the main living area by means of a lift up kitchen worktop extension and light weight, colour coordinated Horrex folding door.

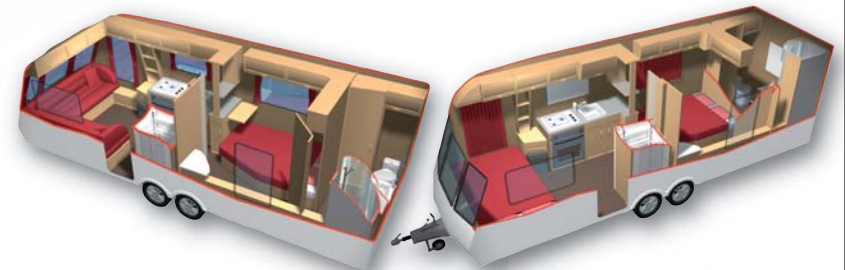
The spacious en-suite end washroom has a separate shower, Thetford electronic toilet & central washbasin. There is ample storage for clothing in the family sized corner wardrobe & beneath the washbasin cupboard.

There is even a full height Dometic 7651 L 150ltr fridge freezer in the spacious, practical and well equipped kitchen area.



Schooner

4 Berth
1 x Fixed bed
1 x Double bed



Buccaneer Caravel

One of this twin axle 4 berth's main distinguishing features is a palatial end bedroom with a larger than normal fixed bed complete with the exclusive 'So Comfortable' pocket sprung mattress for total sleeping comfort.

Thoughtful use of space allows for a vanity unit with concealed cosmetic storage behind a sliding mirror, a hidden shoe tidy compartment beneath the double glazed side window, as well as a large wardrobe with drawers beneath.

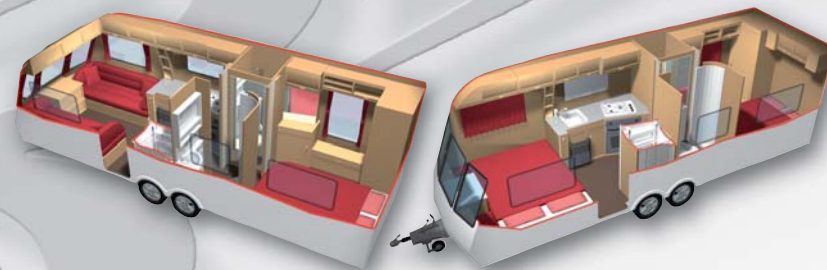
The Caravel enjoys a split washroom layout with the spacious shower cubicle separate from the washbasin & toilet on either side of the vehicle. Both can be used independently or screened off from the rest of the living space to give a large open area. Ideal when you have family or friends because they do not have to walk through the bedroom to use the shower or toilet allowing you to sleep undisturbed.

As you would expect, the air conditioned Caravel also has a well-appointed kitchen with a Dometic 7651 L 150ltr fridge freezer.

The deep, comfortable sofas in the lounge are perfect for relaxing or enjoying a meal with family or friends using the dining table provided.

Caravel

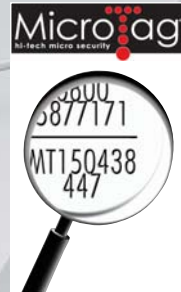
4 Berth
1 x Fixed bed
1 x Double bed



Buccaneer Security Systems

Theft Deterrent, Prevention and Security of Your Touring Caravan

This is taken very seriously with Buccaneer. That is why we have provided a combination of features designed to deter and prevent thieves from stealing your property. And in the unlikely event that they should succeed, aid the identification and speedy recovery of your investment and assist in the prosecution of the thief.



Microtag©

Supplied as standard with every Buccaneer touring caravan, MicroTag© is an innovative and technologically advanced property tracing system that can be easily applied to all your valuables. Marking your property with Microdots not only deters theft, but will also help lead to the successful prosecution of the thief and the recovery of your stolen valuables.

Why Use Microdots? - In order for the Police to successfully prosecute, it is necessary to identify the true owner of stolen property. Marking your property with Microdots is the easiest way to ensure your valuables are quickly identified. You can Microdot all kinds of property against theft including your touring caravan, motor vehicles, televisions, bicycles, jewellery, in fact anything of value to you, that will also be of value to a thief.

In the event of theft or loss the police can locate the MicroDot by using an ultra violet light. The MicroDots are then read using a MicroDot reader, or a conventional microscope. Each MicroDot is laser etched with a free phone help line and your own unique number which is registered on the International Security Register, manned 24 hours a day, 365 days a year.

Robstop WS3000 Hitchlock

The Robstop WS3000 Hitchlock is made of high-grade steel alloy with a cylinder lock. It is very simple to operate and prevents unauthorised coupling and disconnection. It also prevents dismantling of the coupling itself. The safety ball covers the ball headroom of the WS3000 creating an additional means of protection.

Anti-Wind Corner Steadies

The rear corner steadies on all Buccaneer have a special cowling that allows for the precise positioning of a security bolt. Once the corner steadies are down, the bolt is put in place and padlocked*. This prevents the potential thief from being able to lift the corner steadies making it extremely difficult to tow the vehicle away.

Electronic Tagging

In conjunction with the CRiS registration scheme, all Buccaneer touring caravans are electronically tagged during manufacture for added security and ease of vehicle identification.

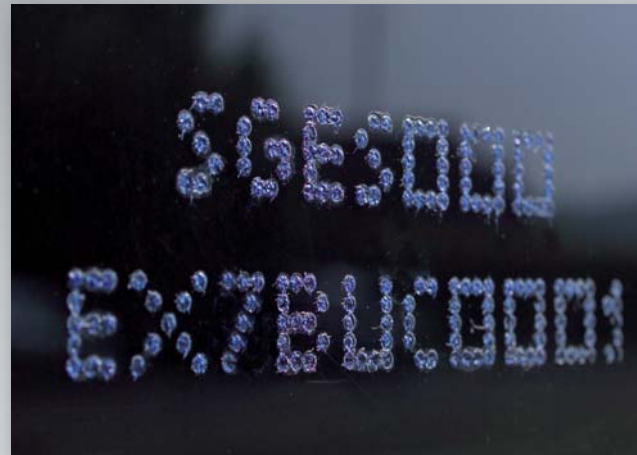


Robstop WS3000 Hitchlock



*padlock not supplied

Anti-Wind Corner Steadies



Night-time rear reflective rear panel

CRiS - The Caravan Registration and Identification Scheme

CRiS is the national register of UK manufactured touring caravans and was established by the National Caravan Council (NCC) in conjunction with HPI Ltd.

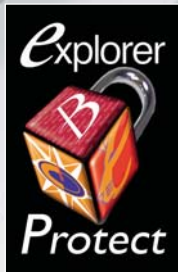
All Buccaneer caravans are recorded on the CRiS database by their unique 17 digit Vehicle Identity Number (VIN). This VIN and the caravan description are recorded on the Touring Caravan Registration Document, which is sent by CRiS to the caravan's registered keeper.

CRiS issues Touring Caravan Registration Documents that are the equivalent of the log books issued by the DVLA for cars – the Touring Caravan Registration Document confirms the name of the registered keeper, the VIN and full vehicle description.

Window Etching & Chassis Marking

The VIN number is stamped onto the chassis of the touring caravan and etched onto all of the windows acting as a further deterrent.

Explorer Protect - Autowatch Alarm system



The Explorer Protect system is fitted as standard on the Buccaneer range.

Manufactured by Autowatch, The Explorer Protect system is designed to give years of trouble free operation. Made with only the highest quality components and using state of the art technology you can be assured that your caravan has the best electronic protection available.

Each caravan alarm is installed with a Passive Infrared Detector (PIR), a wireless sensor that detects movement in the caravan and transmits a radio signal to the alarm module. If the alarm is on the siren will sound. A leg sensor, fully sealed against dust and water, detects if the corner stabilising leg is being raised or lowered and transmits a coded radio signal to the alarm. Additional sensors can be purchased from your retailer to enhance security.





Highspeed test track

Product Development

Continuous Improvement, Product Development & Testing

The construction methods & the running gear and axles used in our touring caravans need to satisfy exacting requirements. All new touring caravans need to be as safe as possible & have the best build quality, issues that are taken very seriously with Buccaneer.

The large surface areas of the front & side walls of a caravan are fully exposed to head & side winds. These factors, combined with the weight of the vehicle & the higher centres of gravity present special challenges to our engineers.

Every new & ongoing development is accompanied by extensive studies & driving tests, many conducted jointly with or by our supply partners.

Stability and handling of a high performance car may rely on firm suspension, but not many cars have cupboards full of crockery! Driving tests conducted by Explorer &

BPW at the DAF Vehicle test centre in Eindhoven & the Dutch Safety Inspectorate in Lelystad, were used to establish the current touring caravan designs. During these tests every possible influence on the damping of caravan movement whilst being towed was painstakingly examined.

On the test track manoeuvres were undertaken in all driving conditions & on a variety of road surfaces. This included endurance tests on the notorious Belgium pavé road that proved the strength, build quality & reliability of our caravans over the equivalent of 13,500km. We have even undertaken a 24-hour high speed endurance trial around BMW's performance centre track, the purpose built Rockingham Raceway, as a means of testing both high speed stability & vehicle reliability in a way that far exceeds normal conditions experienced by our customers.

The information and data obtained in all of these tests is used to develop the caravan and running chassis to the highest standards, as in the case of our braking system that achieves deceleration values far in excess of statutory regulations.

BPW Swing V-Tec Chassis

The 2007 Buccaneer range of touring caravans features the advanced Swing V-Tec axle-chassis system from BPW, quite simply because we believe it to be the best available. Our rigorous testing at UK and European proving ground & vehicle test track facilities has proven

It's superior reliability & stability over other chassis makes available.

BPW are the European market leader with over 10 million axles sold world wide, & an enviable reputation for producing high quality equipment. BPW axle & suspension systems are designed for high performance, reliability and low maintenance.

The main advantages of the Swing V-Tec are:

- Improved ride stability due to a dynamic self-steering effect (un-noticeable in normal towing conditions), reducing the risk of swaying, sideways movement and side wind sensitivity.
- Greater stability even with sudden steering manoeuvres giving a wider margin of safety in an emergency situation.
- Excellent cornering ability due to increased tyre contact with the road, minimising body roll.
- Safer at high speed.

Winterhoff Stabiliser

The Winterhoff WS3000 is a convenient single lever system for easy coupling and stabilising. The special friction pads in the coupling are pressed against the tow ball of the towing vehicle under high spring pressure, thus suppressing dangerous snaking and pitching motions of the touring caravan before they build up.

The main advantages of the WS3000 Stabiliser are:

- Dampens snaking and pitching of the touring caravan.
- Allows more space between rear door mounted spare wheels, common on 4x4 tow vehicles and the open stabilizer.
- Easy to read wear indicator.
- Clip system for easy replacement of the friction pads.
- Ease of engagement and disengagement.

When combined with the Swing V-Tec chassis, the WS3000 offers the ultimate towing experience, but don't just take our word for it... The RWTÜV Essen, as an objective, independent organisation carried out detailed comparative tests of all towing ball couplings and stabilising gear on the market.*

These tests included criteria such as safety during towing, construction type related limited values, handling and maintenance of each system with a variety of weights. The comparative investigations were carried out at the Institute for Vehicle Technology in Essen, Germany and on the test area at Trier-Föhren Airfield. The test winner was the Winterhoff WS3000.

Balanced Alloy Wheels

The Explorer Group are the first UK manufacturer to introduce balanced alloy wheels to their touring caravans.

Wheel balancing refers to the proper distribution of weight around a revolving tyre and wheel assembly.

Unbalanced wheels are prone to vibration that can shake the caravan structure and its contents. An out-of-balance wheel literally bounces down the road rather than spinning smoothly. This can affect your speed and handling and may even reduce the mileage of your car.



Proper wheel balance ensures that the wheels, while spinning, do not have a heavy spot that can cause vibration and premature wear of tyres, struts, shocks and other suspension components. When combined with proper wheel alignment, balanced wheels ensure a smooth ride and a more enjoyable towing experience.

Hand Brake, A-Frame and Jockey Wheel

The easy action handbrake could not be simpler to operate and the central position of the jockey wheel aids manoeuvrability. When retracted it is concealed neatly beneath the A-frame to provide a more aerodynamic look to the front of the caravan.

When not in use, the hitch cable plugs fit snugly into the bespoke recessed mouldings in the A-frame cover, and drain holes help to protect the pins from the elements.

For 2007 we've even introduced a clever nose weight indicator built into the top of the jockey wheel to help you maintain the perfect nose weight and further reduce the risk of instability when towing.



Thermal Insulation and Heating Classification

All Buccaneer touring caravans are classified as Grade 2, in accordance with British Standard BSEN 1645 part 1, for thermal insulation and heating. This standard allows for the interior temperature to be maintained at 20°C when the exterior ambient temperature is 0°C.



BUCCANEER TECHNICAL SPECIFICATIONS 2007

	ELAN 15	CARIBBEAN	ARGOSY	SCHOONER	CARAVEL	CLIPPER
Number of Berths	2	4	4	4	4	4
Interior Length	4828mm / 15'10"	5344mm / 17'6"	5526mm / 18'2"	6325mm / 20'9"	6325mm / 20'9"	6325mm / 20'9"
Exterior body length	5660mm / 18'8"	6176mm / 20'3"	6347mm / 20'8"	6998mm / 23'0"	6998mm / 23'	6998mm / 23'
Shipping Length	6550mm / 21'6"	7066mm / 23'2"	7248mm / 23'9"	8049mm / 26'5"	8049mm / 26'5"	8049mm / 26'5"
Overall Width	2286mm / 7'6"	2286mm / 7'6"	2286mm / 7'6"	2286mm / 7'6"	2286mm / 7'6"	2286mm / 7'6"
Overall Height	2726mm / 8'11"	2726mm / 8'11"	2600mm / 8'6.5"	2600mm / 8'6.5"	2600mm / 8'6.5"	2600mm / 8'6.5"
Maximum Headroom	1908mm / 6'3"	1908mm / 6'3"	1908mm / 6'3"	1908mm / 6'3"	1908mm / 6'3"	1908mm / 6'3"
Wheel Rim	5.5J x 14	5.5J x 14	5.5J x 14	5.5J x 14	5.5J x 14	5.5J x 14
Tyre Pressure at MTPLM in psi	64psi	64psi	57psi	38psi	38psi	38psi
Brake Size	200/50	200/50	250/40	200/50	200/50	200/50
Awning Sizes Ground to Ground	9075mm / 29'9"	9590mm / 31'5"	9660mm / 31'8"	10570mm / 34'8"	10570mm / 34'8"	10570mm / 34'8"
Bed Sizes	Option 1 1 x Single 1880 x 720mm 6'2" x 2'4" 1 x Single 1880 x 720mm 6'2" x 2'4"	1 x Single 1880 x 720mm 6'2" x 2'4" 1 x Single 1880 x 720mm 6'2" x 2'4" 1 x Single 1800 x 635mm 5'11" x 2'1" 1 x Single 1655 x 570mm 5'5" x 1'10"	1 x Single x 2140 x 710mm 7' x 2'4" 1 x Single 2113 x 720mm 6'11" x 2'4" 1 x Double 1930 x 1375mm 6'4" x 4'5"	1 x Double 2140 x 1344mm 7'0" x 4'4" 1 x Double 1830 x 1290mm 6'0" x 4'3"	1 x Single 1830 x 720mm 6' x 2'4" 1 x Single 1830 x 720mm 6' x 2'4" 1 x Double 1906 x 136 6'3" x 4'5"	1 x Double 2140 x 1334mm 7'0" x 4'4" 2 x Singles 1906 x 790mm 6'4" x 2'7"
Bed Sizes	Option 2 1 x Double 2074 x 1480mm 6'8" x 4'10"	1 x Double 2074 x 1480mm 6'8" x 4'10" 1 x Single 1800 x 635mm 5'11" x 2'1" 1 x Single 1655 x 570mm 5'5" x 1'10"			1 x Double 2074 x 1430mm 6'8" x 4'8" 1 x Double 1906 x 1360mm 6'3" x 4'5"	
M.T.P.L.M.	1500kgs / 29.46cwt	1650kgs / 32.41cwt	1700kgs / 33.29cwt	1900kgs / 37.32cwt	1900kgs / 37.32cwt	1900kgs / 37.32cwt
Mass in Running Order	1263kgs / 24.81cwt	1388kgs / 27.26cwt	1436kgs / 28.21cwt	1658kgs / 32.41cwt	1658kgs / 32.41cwt	1658kgs / 32.41cwt
Essential Habitation Equipment	102kgs / 2.00cwt	102kgs / 2.00cwt	102kgs / 2.00cwt	102kgs / 2.00cwt	102kgs / 2.00cwt	102kgs / 2.00cwt
Maximum User Payload	237kgs / 4.65cwt	262kgs / 5.14cwt	264kgs / 5.18cwt	242kgs / 4.75cwt	242kgs / 4.75cwt	242kgs / 4.75cwt
Maximum Hitch Weight	100kgs / 1.96cwt	100kgs / 1.96cwt	100kgs / 1.96cwt	100kgs / 1.96cwt	100kgs / 1.96cwt	100kgs / 1.96cwt
Optional Equipment Payload	28kgs / 0.55cwt	28kgs / 0.55cwt	28kgs / 0.55cwt	0	0	0

A manufacturing tolerance has been added to **Mass in Running Order** before calculating the **Maximum User Payload**.
Maximum User Payload includes **Essential Habitation Equipment**, Personal Effects and Optional Equipment.

Note 1: Please take care to ensure that you have allowed for the masses of all items you intend to carry in the caravan.

Note 2: Warning under no circumstances must the Technical Permissible Laden Mass of the caravan be exceeded.

Note 3: All data is calculated using metric weights and measurements. The imperial figures quoted are conversions thereof.

Buccaneer Owners Club

As a Buccaneer owner, you are eligible to join the Buccaneer Owners Club.

With a huge number of rallies and wide range of activities to take part in, membership adds a whole new dimension to the fun you can have and the friends you can make whilst enjoying your touring caravan.

For more information about the Buccaneer Owners Club follow the link on the Explorer Group website, visit the owners club site: www.buccaneerownersclub.org.uk, or contact Mr Gordon Grainge, Membership Secretary, Buccaneer Owners Club, 1 Nairn Close, York, YO24 2RB. Telephone: 01904 339010.

The Buccaneer Promise

For over 37 years value for money and high specification has been central to the design and development of Buccaneer touring caravans.

Through the building and rigorous testing of prototypes, to construction, fitting and finishing, the wide range of products we currently offer embraces every imaginable lifestyle.

All of The Explorer Group's touring caravans comply with relevant European standards and UK Road Vehicle Regulations.

Peace of Mind

We recognise the value that peace of mind affords on the open road. So in addition to using the latest materials, components and manufacturing techniques, we offer a range of warranties: 5 Year Water Ingress Guarantee and 3 Year Comprehensive Factory Backed Warranty.

An exceptional package of warranty cover designed to give you long-term peace of mind, and enhance the resale value of your investment.



Standard Features and Optional Extras:

One piece Full Height GRP front panel	✓
Full height ABS rear panel	✓
Maximum width 7'6" wide (2286mm) all models	✓
NEW Enhanced exterior graphics	✓
Exterior high level brake light	✓
Caraluna Mark2 (Chrome) rear light clusters	✓
NEW High level marker Light with chrome effect finish	NEW
2 x Jokon awning light (Nearside and offside)	✓
Stainless steel grab handles front and rear	✓
BPW Swing V-Tec chassis	✓
NEW Jockey wheel noseweight indicator	NEW
ABS hitch cover	✓
Easy action handbrake	✓
Winterhoff WS3000 stabiliser	✓
Heavy duty corner steadies	✓
Big Feet for corner steadies	✓
High Powered Silver alloy wheels with distinctive branded wheel centres	✓
NEW Balanced Alloy wheels	NEW
Alloy spare wheel complete with carrier	✓
Robstop hitch lock	✓
Anti-wind locking bolts to rear corner steadies	✓
Autowatch security alarm system	✓
Single key operation to all exterior lockers and doors	✓
Awning warmer system	✓
NEW Gas bottle storage - Designed to take the new BP Gas Light bottle and steel containers	NEW
Exterior gas barbecue point	✓
NEW Elbbe one-piece exterior door with opening window, integral blind and flyscreen	NEW
Aswald Ash furniture	✓
Aswald Ash wallboard	✓
Stainless Steel effect kitchen wallboard	✓
Please Note:	
Dometic RM7291 L 93ltr power fridge with curved door	✓
Dometic 7651 L 150ltr Fridge Freezer (Schooner/Clipper & NEW in Caravel Only)	✓
NEW Electronic ignition on all fridges	NEW
Curved doors on all fridges	✓
Truma Ultraheat Auto fire	✓
NEW Truma Rapid blown air heating system	NEW
Truma Ultrastore water heater	✓
NEW Truma Ultraflow water filter, pump and waterline (Submersible pump on twin axle)	NEW
Thetford rotatable cassette toilet with electronic flush	✓

Spinflo Midi Prima Oven Unit with illumination and 2 shelves	✓
Spinflo 3 burner hob with large high-speed multi-function burner	✓
Space saving Argent stainless steel sink	✓
Reich Trend soft gold faucets	✓
Chinchilla glass SINK & hob covers (can be used as a cutting surface)	✓
Bespoke silver wash bowl c/w removable drainer & chopping board	✓
NEW CBE control panels with brand specific frame	NEW
Microwave oven 230v	✓
Zoe eyeball 12v reading lights	✓
BCA mains 230v wall lights	✓
12v Lumo and Crown Ice ceiling and locker lights	✓
Status directional TV/FM aerial	✓
AM antenna	✓
NEW Sony CD/DVD remote control player, radio tuner with I-Pod MP3 connectivity and AV output sockets	NEW
Sony stereo speakers	✓
Roman blind to end washroom models	✓
Nemplas twin curtain track	✓
NEW Timber washroom doors on all models (except tambour on Caravel)	NEW
NEW Lever lock on toilet doors	NEW
Lined shower cubicles on all models	✓
Feature end panel in Argosy washrooms	NEW
Contemporary brushed steel effect washroom fittings	✓
Reich chrome shower and vanity taps	✓
Whale white shower and vanity taps	✗
Laundry bag for smalls to rear washrooms (Elan / Caribbean only)	✓
Anti-bacterial non-slip shower mat	✓
Omnivent 12v 2-way fan (Singel axle only)	✓
Dometic roof mounted air conditioning unit to twin axle models (option on single axle in lieu of Omnivent)	✓
Large Heki II rooflights with NEW pleated blind	✓
Mini Heki rooflight to washroom	✓
Polyplastic 4.26 double glazed flush fit front windows	✓
Seitz series S6.5 privacy glass side and rear windows c/w Duette cassette blinds and flyscreens	✓
Loose lay removable carpet	✓
NEW Black door mat and tray with Buccaneer inset decal	NEW
NEW Horrex folding doors	NEW
Timber effect tambour doors	✓
Upholstered drinks cabinet	✓
Upholstered key station	✓
Drop down bed box doors to front dinette	✓
Large exterior access door with 230v / 12v / Aerial output socket	✓
10 gallon onboard water tank	✓

Micro switch in onboard tank to automatically switch off external water pump (twin axle only)	✓
Full height exterior storage locker (Elan15 & Caribbean)	✓
Exclusive 'So Comfortable' pocket sprung domestic quality fixed bed mattress	✓
One piece metal (fixed doubles only) bed frame c/w easy lift gas struts	✓
Rear bedroom TV shelf c/w 12v, 230v & aerial sockets in Argosy layout	✓
Blown air heating outlet in bedroom in Argosy layout	✓
NEW Removable front chest of drawers with slide out table extension (not in L shaped lounges)	NEW
NEW Wraparound seating option in lieu of front chest of drawers (Option to suit above only)	NEW
Decorative laminate to all furniture work tops and tables	NEW
Lift up kitchen worktop extension (Schooner & Clipper only)	✓
NEW Cutlery tray	NEW
NEW Chrome cup and plate rack	NEW
NEW lounge position for spaceheater in Caravel layout	NEW

ACCESSORIES SUPPLIED FREE OF CHARGE

Owners Information Pack (Contains Owners Handbook and appliance manufacturers user manuals, boiler fuses, regulatory certificates and forms)	✓
Large plastic step	✓
Wheel brace and corner steady handle	✓
Wheel locating pins (easy assist to wheel change)	✓
25m 230v hook up lead	✓
Truma Ultraflow pump	✓
Truma Ultraflow water filter	✓
Truma Ultraflow water line	✓
Thetford Aqua Kem pack	✓
Status aerial customer pack	✓
Battery tray	✓
2 x Corner steady locking pins	✓
Male coaxial plug and 12v plug	✓
Sink plugs, washing up bowl, drainer	✓
Grill pan	✓
Microtag security marking kit	✓
Entrance door mat	✓
Big Feet corner steady pads	✓
Wastemaster	✓

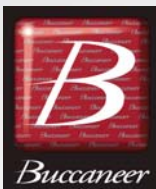


NATIONAL CARAVAN
COUNCIL LIMITED

Dometic
Created by Electrolux



north east
england



Buccaneer on the Web

Details of your nearest retailer, latest news and useful downloads, as well as 360° interior tours of all Buccaneer vehicles can be found on our fully detailed website at:

www.buccaneer-caravans.com

Proud of our heritage - Pride in our products

This brochure does not constitute an offer by The Explorer Group Limited (Explorer). Explorer reserves the right to, and does alter from time to time, technical specifications, prices and model ranges as materials, model improvements and conditions require, and can accept no responsibility for discrepancies between these and subsequent models shown. This brochure and the photographs used are for guidance purposes only. Please be sure to check full current and technical specifications with your retailer, or on our website, before ordering your new touring caravan. All household items illustrated in the brochure are used to enhance photography and are for display purposes only. They are not supplied with your touring caravan. Please note that Approved Retailers are not the agents of The Explorer Group Limited. Accordingly they have no authority to bind Explorer or to make any representation or undertaking whatsoever on behalf of Explorer.

* The stabilizer tests conducted by RWTÜV Essen were carried out during July and August 2004.

The Explorer Group Limited

Manufacturers of Touring Caravans & Motorhomes

Explorer House, Delves Lane, Consett, Co.Durham DH8 7PE

Tel: 01207 699 000 Fax: 01207 699 001

www.explorer-group.co.uk