

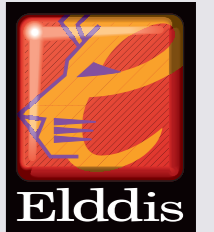


Elddis Touring Caravans 2008

AVANTÉ *Club*

Odyssey

Crusader



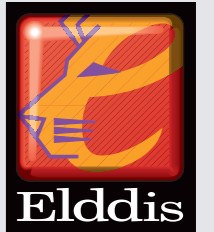
**Elddis is having
the best back garden
in the world**

Elddis is Freedom. . . .

The freedom to do what you want, when you want. To some this means adventure, an escape from the ordinary into a world of sheer rock faces, fast-breaking waves and uncharted fishing spots. To others it means tranquility and the chance to enjoy breathtaking views in the quiet of the countryside. Built by The Explorer Group Ltd, the only UK Caravan Manufacturer accredited by the Institute of Mechanical Design Engineers, Elddis is designed for whatever you want to be.

With over 43 years experience in the caravan market, Elddis is renowned for being at the very forefront of caravan design and innovation. So don't wait any longer to find your ideal caravan in our new 2008 collection.





2008 Elddis Touring Caravan Collection

Discover the completely new Avanté Club range and be surprised by the stylish makeover and added features of the Odyssey range. For those looking for more impressive and highly specified caravans don't miss our stunning Crusader models which have been re-styled with delicate and contemporary upholstery.

Every Elddis touring caravan complies with relevant European standards and UK Road Vehicle Regulations.

With practical, stylish and well-designed interior layouts from 2 to 6 berth, whichever Elddis you choose you can be assured to enjoy the experience of caravanning wherever you like!

Avanté Club . . .
Odyssey . . .
Crusader . . .



Avanté Club 462



Odyssey 550



Crusader Superstorm



Avanté Club 462

Elddis Avanté Club

The Avanté Club is a completely new innovative range designed by our experienced team of engineers to offer you Club Class quality models. The fresh interior and exterior look of this range as well as the choice of different layouts will appeal to all customers.

Stylish and imaginative, the seven single axle and two twin axle models offer far more than many touring caravans in this category.

Our nine all new Avanté Club models are 2.24m (7'4") wide giving you plenty of space and superb value for money.

Exterior Styling

Balanced high-powered silver alloy wheels, spare wheel carrier and recessed jockey wheel with nose weight indicator, come as standard with each model of the Avanté Club range.

The new Elddis family graphic design, full height GRP front panel, ABS rear panel and chrome injection moulded badge contribute to giving this new range a smooth and attractive exterior look.



Avanté Club 462





Elddis Avanté Club

Interior Living Space

Key features of the Elddis Avanté Club interior are the contemporary curved interior overhead locker doors and the new trendy Rumba upholstery co-ordinates with curtains and loose removable carpets.

Decorative locker doors and internal veneered furniture are made from distinctive Vienna Pear, whilst all worktops are finished with decorative Formica laminate.

An extension to the occasional table top on the front chest of drawers simply slides out from underneath and drops neatly into place.

Music plays at the touch of a button thanks to the new Sony CD Radio with I-Pod/MP3 player connectivity.

The Kitchen

Cooking is a pleasure when using the Avanté Club kitchen. A Spinflo 3 burner hob with large high-speed multi-function burner gives a greater range of options when using larger pans for cooking. Add to this the new 700W microwave, the Prima Mark3 oven and the cooking of any meal is easily accommodated.

Food preparation is also given a helping hand with bespoke silver washing up bowl, freeing up more work surface when you need it the most.

Storing food in the fridge couldn't be easier with the new fully electronic Thetford 113ltr fridge with LCD display.

The Washroom

The spacious end bathroom (462, 524 & 624 models only) includes a stylish half inset basin with contemporary polished chrome fittings and a fully circular shower enclosure.

Contemporary style drop down Jomal washroom unit (All models except 462, 524 & 624) and Thetford electronic flush toilet are standard equipment.



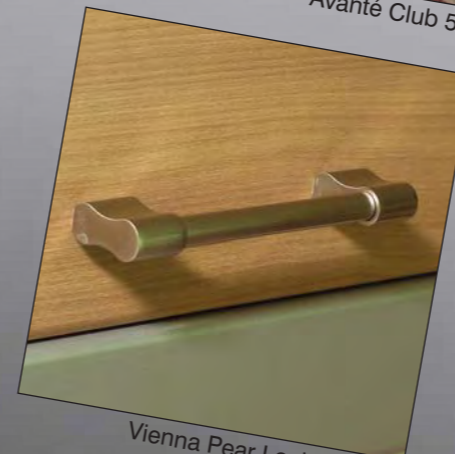
Avanté Club 362



Avanté Club 462



700W Microwave



Vienna Pear Locker doors

Avanté Club 524

All New Avanté Club Collection



362 - 2 Berth

Length (Int.) 3733mm / 12'3"
 Length (Ext.) 4554mm / 15'0"
 Width (Ext.) 2236mm / 7'4"
 Bed Options *Front:* 2 x Single
 OR 1 x Double



462 - 2 Berth

Length (Int.) 4660mm / 15'3"
 Length (Ext.) 5481mm / 18'0"
 Width (Ext.) 2236mm / 7'4"
 Bed Options *Front:* 2 x Single
 OR 1 x Double



474 - 4 Berth

Length (Int.) 4740mm / 15'6"
 Length (Ext.) 5561mm / 18'3"
 Width (Ext.) 2236mm / 7'4"
 Bed Options *Front:* 1 x Double
Rear: 1 x Double Fixed Bed



505 - 5 Berth

Length (Int.) 5599mm / 18'5"
 Length (Ext.) 6420mm / 21'1"
 Width (Ext.) 2236mm / 7'4"
 Bed Options *Front:* 2 x Single OR 1 x Double
Rear: 1 x Double, 1 x Bunk



524 - 4 Berth

Length (Int.) 5344mm / 17'6.5"
 Length (Ext.) 6165mm / 20'3"
 Width (Ext.) 2236mm / 7'4"
 Bed Options *Front:* 2 x Single OR 1 x Double
Dinette: 1 x Single, 1 x Bunk



544 - 4 Berth

Length (Int.) 5599mm / 18'5"
 Length (Ext.) 6420mm / 21'1"
 Width (Ext.) 2236mm / 7'4"
 Bed Options *Front:* 1 x Double
Rear: 1 x Double Fixed Bed



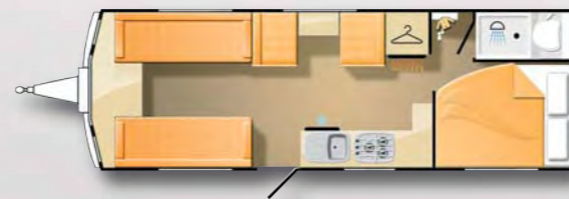
556 - 6 Berth

Length (Int.) 5436mm / 17'10"
 Length (Ext.) 6400mm / 21'
 Width (Ext.) 2236mm / 7'4"
 Bed Options *Front:* 2 x Single OR 1 x Double
Dinette: 1 x Single, 1 x Bunk
Rear: 2 x Single Fixed Bunks



624 - 4 Berth

Length (Int.) 6150mm / 20'1"
 Length (Ext.) 6971mm / 22'10"
 Width (Ext.) 2236mm / 7'4"
 Bed Options *Front:* 1 x Double
Rear: 1 x Double Fixed Bed



626 - 6 Berth

Length (Int.) 6150mm / 20'1"
 Length (Ext.) 6971mm / 22'10"
 Width (Ext.) 2236mm / 7'4"
 Bed Options *Front:* 2 x Single OR 1 x Double
Dinette: 1 x Single, 1 x Bunk
Rear: 1 x Double Fixed Bed



Avanté Club Rumba Upholstery



Avanté Club 524



AVANTÉ CLUB TECHNICAL SPECIFICATIONS

Model	362	462	474	505	524	544	556	624	626	
Number of Berths	2	2	4	5	4	4	6	4	6	
Interior Length	3733mm / 12'3"	4660mm / 15'3"	4740mm / 15'6"	5599mm / 18'5"	5344mm / 17'6.5"	5599mm / 18'5"	5436mm / 17'10"	6150mm / 20'1"	6150mm / 20'1"	
Exterior body length	4554mm / 15'0"	5481mm / 18'0"	5561mm / 18'3"	6420mm / 21'1"	6165mm / 20'3"	6420mm / 21'1"	6400mm / 21'	6971mm / 22'10"	6971mm / 22'10"	
Shipping Length	5475mm / 18'0"	6402mm / 21'0"	6402mm / 21'0"	7341mm / 24'1"	7055mm / 23'2"	7341mm / 24'1"	7178mm / 23'6"	7892mm / 25'10"	7892mm / 25'10"	
Overall Width	2236mm / 7'4"	2236mm / 7'4"	2236mm / 7'4"	2236mm / 7'4"	2236mm / 7'4"	2236mm / 7'4"	2236mm / 7'4"	2236mm / 7'4"	2236mm / 7'4"	
Overall Height	2726mm / 8'11"	2726mm / 8'11"	2726mm / 8'11"	2726mm / 8'11"	2726mm / 8'11"	2726mm / 8'11"	2726mm / 8'11"	2726mm / 8'11"	2726mm / 8'11"	
Maximum Headroom	1908mm / 6'3"	1908mm / 6'3"	1908mm / 6'3"	1908mm / 6'3"	1908mm / 6'3"	1908mm / 6'3"	1908mm / 6'3"	1908mm / 6'3"	1908mm / 6'3"	
Interior Width	2120mm / 6'11"	2120mm / 6'11"	2120mm / 6'11"	2120mm / 6'11"	2120mm / 6'11"	2120mm / 6'11"	2120mm / 6'11"	2120mm / 6'11"	2120mm / 6'11"	
Wheel Rim	5.5J x 14	5.5J x 14	5.5J x 14	5.5J x 14	5.5J x 14	5.5J x 14	5.5J x 14	5.5J x 14	5.5J x 14	
Tyre Size	175 R14 99	175 R14 99	175 R14 99	175 R14 99	175 R14 99	185 R14 102	185 R14 102	175x15 R14 86	175x15 R14 86	
Tyre Pressure at MTPLM in psi	45psi	53psi	53psi	53psi	40psi	56psi	56psi	34psi	34psi	
Brake Size	200/50	200/50	200/50	200/50	250/40	250/50	250/40	200/50	200/50	
Awning Sizes Ground to Ground	7980mm / 26'2"	8908mm / 29'3"	8998mm / 29'6"	9950mm / 32'1"	9500mm / 31'5"	9950mm / 32'1"	9680mm / 31'9"	10370mm / 34'1"	10370mm / 34'1"	
Bed Sizes mm/feet	Front Beds 2 x Single 1830mm x 718mm 6'0" x 2'3" or 1 x Double 2070mm x 1370mm 6'9" x 4'6"	2 x Single 1830mm x 718mm 6'0" x 2'3" or 1 x Double 2070mm x 1370mm 6'9" x 4'6"	1 x Double 2070mm x 1400mm 6'9" x 4'7"	2 x Single 1830mm x 718mm 6'0" x 2'3" or 1 x Double 2070mm x 1370mm 6'9" x 4'6"	2 x Single 1830mm x 718mm 6'0" x 2'3" or 1 x Double 2070mm x 1370mm 6'9" x 4'6"	1 x Double 2070mm x 1370mm 6'9" x 4'6"	1 x Double 2070mm x 1370mm 6'9" x 4'6"	2 x Single 1830mm x 718mm 6'0" x 2'3" or 1 x Double 2070mm x 1370mm 6'9" x 4'6"	1 x Double 2070mm x 1370mm 6'9" x 4'6"	2 x Single 1830mm x 718mm 6'0" x 2'3" or 1 x Double 2070mm x 1370mm 6'9" x 4'6"
Bed Sizes mm/feet	Side Dinette Not Applicable	Not Applicable	Not Applicable	Not Applicable	1 x Single 1800mm x 630mm 5'11" x 2'1" and 1 x Lift up bunk 1632mm x 570mm 5'2" x 1'10.5"	Not Applicable	1 x Single 1800mm x 630mm 5'11" x 2'1" and 1 x Lift up bunk 1632mm x 570mm 5'2" x 1'10.5"	Not Applicable	1 x Single 1800mm x 630mm 5'11" x 2'1" and 1 x Lift up bunk 1632mm x 570mm 5'2" x 1'10.5"	
Bed Sizes mm/feet	Rear Beds Not Applicable	Not Applicable	Fixed Bed 1 x Double 1830mm x 1370mm 6'0" x 4'6"	1 x Double 1848mm x 1280mm 6'1" x 4'2" and 1 x Lift up bunk 1648mm x 570mm 5'4" x 1'10.5"	Not Applicable	Fixed Bed 1 x Double 1830mm x 1370mm 6'0" x 4'6"	Fixed Bunks 2 x Single 1830mm x 610mm 6'0" x 2'0"	Fixed Bed 1 x Double 1830mm x 1370mm 6'0" x 4'6"	Fixed Bed 1 x Double 1830mm x 1370mm 6'0" x 4'6"	
M.T.P.L.M.	1150kgs / 25.5cwt	1285kgs / 28.2cwt	1335kgs / 29.2cwt	1500kgs / 33.1cwt	1420kgs / 31.3cwt	1470kgs / 32.4cwt	1500kgs / 33.1cwt	1630kgs / 35.9cwt	1700kgs / 37.5cwt	
Mass Influencing Order	1006kgs / 22.1cwt	1127kgs / 24.8cwt	1161kgs / 25.6cwt	1307kgs / 28.7cwt	1239kgs / 27.3cwt	1287kgs / 28.3cwt	1297kgs / 28.6cwt	1442kgs / 31.8cwt	1487kgs / 32.8cwt	
Essential Habitation Equipment	48kgs / 0.94cwt	53kgs / 1.16cwt	48kgs / 0.94cwt	48kgs / 0.94cwt	53kgs / 1.16cwt	48kgs / 0.94cwt	48kgs / 0.94cwt	53kgs / 1.16cwt	53kgs / 1.16cwt	
Maximum User Payload	144kgs / 3.2cwt	158kgs / 3.5cwt	174kgs / 3.8cwt	193kgs / 4.3cwt	185kgs / 4.1cwt	193kgs / 4.3cwt	203kgs / 4.5cwt	218kgs / 4.8cwt	233kgs / 5.1cwt	
Maximum Hitch Weight	100kgs / 1.96cwt	100kgs / 1.96cwt	100kgs / 1.96cwt	100kgs / 1.96cwt	100kgs / 1.96cwt	100kgs / 1.96cwt	100kgs / 1.96cwt	100kgs / 1.96cwt	100kgs / 1.96cwt	
Optional Equipment payload	0	0	0	0	0	0	0	0	0	

A manufacturing tolerance has been added to Mass in Running Order before calculating the Maximum User Payload. Maximum User Payload includes Essential Habitation Equipment, Personal Effects and Optional Equipment.
 Note 1: Please take care to ensure that you have allowed for the masses of all items you intend to carry in the caravan.
 Note 2: Warning under no circumstances must the Technical Permissible Laden Mass of the caravan be exceeded.
 Note 3: All data is calculated using metric weights and measurements. The imperial figures quoted are conversions thereof.



Elddis Odyssey

The Odyssey range of six touring caravans is the next step up from the Avanté Club range and is packed with a host of improvements that give a truly impressive specification.

All Odysseys are 2.29m (7'6") wide giving you plenty of space and superb value for money.

This range includes the new 525 five berth model and the new 550 fixed island bed model complete with a spacious separate shower enclosure.

You will benefit from even more security with the new high level Autowatch security alarm system fitted as standard.

Exterior Styling

The new Elddis family graphic design, full height GRP front panel and ABS rear panel along with privacy windows give the Odyssey a fantastic look.

The stunning Seitz side and rear windows offer a host of benefits including privacy, a cooler caravan interior on hot sunny days and additional protection from the sunlight for upholstery and curtain fabrics.

Balanced high-powered silver alloy wheels, spare wheel carrier and recessed jockey wheel with nose weight indicator come as standard with each model of the Odyssey range.

The Odyssey also comes with Big Feet corner steadies and a new Hartal entrance door with privacy window and integrated bin.



Odyssey 544



Odyssey 540

Odyssey



Interior Living Space

Solid wood decorative locker doors and Montreal Maple internal veneered furniture and wallboards give the Odyssey a classy look without breaking the bank. In addition, the Millesime upholstery, curtains and loose removable carpets create a smart look.

An occasional table slides out of the front chest of drawers creating extra space to enjoy your meal.

Enjoy music at any time with the new Sony CD Radio with I-Pod/MP3 player connectivity and appreciate a relaxing night with the 'So Comfortable' domestic quality pocket sprung mattress.

The Kitchen

Cooking is a pleasure when using the Odyssey kitchen. A Spinflo 3 burner hob with large high-speed multi-function burner gives a greater range of options when using larger pans for cooking. Add to this the new 700W microwave, the Prima Mark3 oven and the cooking of any meal is easily accommodated.

The new Argent stainless steel linen effect sink has an integrated drainer, is scratch resistant and comes complete with a washing up basin.

Storing food in the fridge now becomes an easy task with the new fully electronic Thetford 113ltr fridge complete with LCD display.



Odyssey 482



Odyssey 544



Odyssey 482



Odyssey 482



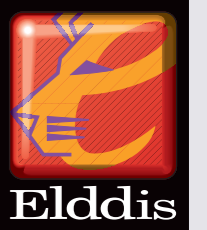
Odyssey 544



Odyssey 540

Odyssey

Eddis Odyssey Collection



482 - 2 Berth

Length (Int.) 4828mm / 15'10"
 Length (Ext.) 5660mm / 18'8"
 Width (Ext.) 2286mm / 7'6"
 Bed Options *Front: 2 x Single OR 1 x Double*



524 - 4 Berth

Length (Int.) 5344mm / 17'6"
 Length (Ext.) 6176mm / 20'3"
 Width (Ext.) 2286mm / 7'6"
 Bed Options *Front: 2 x Single OR 1 x Double
 Side Dinette: 1 x Single, 1 x Bunk*



Odyssey Millesime Upholstery



Odyssey 550

NEW



525 - 5 Berth

Length (Int.) 5526mm / 18'2"
 Length (Ext.) 6347mm / 20'10"
 Width (Ext.) 2286mm / 7'6"
 Bed Options *Front: 1 x Double
 Rear: 1 x Double, 1 x Bunk*



540 - 4 Berth

Length (Int.) 5526mm / 18'2"
 Length (Ext.) 6347mm / 20'10"
 Width (Ext.) 2286mm / 7'6"
 Bed Options *Front: 2 x Single
 Rear: 1 x Double Fixed Bed*

NEW



550 - 4 Berth

Length (Int.) 5599mm / 18'5"
 Length (Ext.) 6429mm / 21'
 Width (Ext.) 2286mm / 7'6"
 Bed Options *Front: 2 x Single
 Rear: 1 x Double Fixed Bed*



544 - 4 Berth

Length (Int.) 5599mm / 18'5"
 Length (Ext.) 6429mm / 21'
 Width (Ext.) 2286mm / 7'6"
 Bed Options *Front: 1 x Double
 Rear: 1 x Double Fixed Bed*

ODYSSEY TECHNICAL SPECIFICATIONS

Model		482	524	525	540	544	550
Number of Berths		2	4	5	4	4	4
Interior Length	mm / feet	4828mm / 15'10"	5344mm / 17'6"	5526mm / 18'2"	5526mm / 18'2"	5599mm / 18'5"	5599mm / 18'5"
Exterior body length	mm / feet	5660mm / 18'8"	6176mm / 20'3"	6347mm / 20'10"	6347mm / 20'10"	6429mm / 21'	6429mm / 21'
Shipping Length	mm / feet	6550mm / 21'6"	7066mm / 23'2"	7248mm / 23'9"	7248mm / 23'9"	7319mm / 24'1"	7319mm / 24'1"
Overall Width	mm / feet	2286mm / 7'6"	2286mm / 7'6"	2286mm / 7'6"	2286mm / 7'6"	2286mm / 7'6"	2286mm / 7'6"
Overall Height	mm / feet	2726mm / 8'11"	2726mm / 8'11"	2726mm / 8'11"	2726mm / 8'11"	2726mm / 8'11"	2726mm / 8'11"
Maximum Headroom	mm / feet	1908mm / 6'3"	1908mm / 6'3"	1908mm / 6'3"	1908mm / 6'3"	1908mm / 6'3"	1908mm / 6'3"
Interior Width	mm / feet	2150mm / 7'1"	2150mm / 7'1"	2150mm / 7'1"	2150mm / 7'1"	2150mm / 7'1"	2150mm / 7'1"
Wheel Rim		5.5J x 14	5.5J x 14	5.5J x 14	5.5J x 14	5.5J x 14	5.5J x 14
Tyre Size		175 R14 99	185 R14 102	185 R14 102	185 R14 102	185 R14 102	185 R14 102
Tyre Pressure at MTPLM in psi		62	62	62	62	62	62
Brake Size		200/50	250/40	250/40	250/40	250/40	250/40
Awning Sizes Ground to Ground		9075mm / 29'9"	9590mm / 31'5"	9770mm / 32'1"	9770mm / 32'1"	9950mm / 32'6"	9950mm / 32'6"
Bed Sizes mm / feet	Front Beds	2 x Single 1880mm x 720mm 6'2" x 2'4" or 1 x Double 2074mm x 1480mm 6'10" x 4'10"	2 x Single 1880mm x 720mm 6'2" x 2'4" or 1 x Double 2074mm x 1480mm 6'10" x 4'10"	1 x Double 2140mm x 1354mm 7'0" x 4'5"	1 x Single 2140mm x 720mm 7'0" x 2'4" and 1 x Single 2113mm x 720mm 6'11" x 2'4"	1 x Double 2074mm x 1200mm 6'10" x 3'11"	1 x Single 1813mm x 720mm 6'0" x 2'4" and 1 x Single 2113mm x 720mm 6'11" x 2'4"
	Side Dinette	Not Applicable	1 x Single 1800mm x 635mm 5'11" x 2'1" and 1 x Lift up bunk 1650mm x 570mm 5'5" x 1'10.5"	Not Applicable	Not Applicable	Not Applicable	Not Applicable
Bed Sizes mm / feet	Rear Beds	Not Applicable	Not Applicable	1 x Double 2074mm x 1300mm 6'10" x 4'4" and 1 x Lift up bunk 1956mm x 570mm 6'5" x 1'10.5"	Fixed Bed 1 x Double 1930mm x 1375mm 6'4" x 4'5"	Fixed Bed 1 x Double 1830mm x 1270mm 6'0" x 4'2"	Fixed Bed 1 x Double 1843mm x 1346mm 6'1" x 4'5"
	M.T.P.L.M.	kgs / cwt	1385kgs / 27.20cwt	1525kgs / 29.95cwt	1570kgs / 30.83cwt	1560kgs / 30.64cwt	1560kgs / 30.64cwt
Mass in Running Order	kgs / cwt	1225kgs / 24.06cwt	1340kgs / 26.32cwt	1373kgs / 26.9cwt	1373kgs / 26.9cwt	1372kgs / 26.9cwt	1347kgs / 26.45cwt
Essential Habitation Equipment	kgs / cwt	53kgs / 1.04cwt	53kgs / 1.04cwt	53kgs / 1.04cwt	53kgs / 1.04cwt	53kgs / 1.04cwt	53kgs / 1.04cwt
Maximum User Payload	kgs / cwt	160kgs / 3.14cwt	185kgs / 3.63cwt	197kgs / 3.86cwt	187kgs / 3.67cwt	188kgs / 3.69cwt	188kgs / 3.69cwt
Maximum Hitch Weight	kgs / cwt	100kgs / 1.96cwt	100kgs / 1.96cwt	100kgs / 1.96cwt	100kgs / 1.96cwt	100kgs / 1.96cwt	100kgs / 1.96cwt
Optional Equipment payload	kgs / cwt	0	0	0	0	0	0

A manufacturing tolerance has been added to Mass in Running Order before calculating the Maximum User Payload.
 Maximum User Payload includes Essential Habitation Equipment, Personal Effects and Optional Equipment.
 Note 1: Please take care to ensure that you have allowed for the masses of all items you intend to carry in the caravan.
 Note 2: Warning under no circumstances must the Technical Permissible Laden Mass of the caravan be exceeded.
 Note 3: All data is calculated using metric weights and measurements. The imperial figures quoted are conversions thereof.



Odyssey 544



Odyssey Wall Lights



Crusader Superstorm

Elddis Crusader

Enjoy an authentic experience of luxury with our four exclusive Crusader twin axle models.

The top of the range Crusader is the best equipped and most luxurious of the Elddis range.

Despite the premium status, superb looks and striking new interior makeover, the Elddis Crusader range continues to provide outstanding value for money.

Crusader Exterior Styling

The new Elddis family graphic design, vehicle decals, full height GRP front panel and ABS rear panel provide the range with a remarkable exterior look.

Seitz privacy windows make the Crusader stand out from the crowd. The stunning Seitz side and rear flush fitting privacy windows allow you to see out, but prevent people from seeing in. The tint helps to reflect rays from the sun that damage upholstery and can assist in keeping the interior cooler on the sunniest of days. Glare from the sun is also substantially reduced with minimal effect on the amount of actual light entering the vehicle.

All Crusaders are built on the impressive BPW Swing V-Tech chassis with a Winterhoff WS3000 stabiliser and easy action handbrake, balanced alloy wheels and an innovative nose weight indicator as standard.

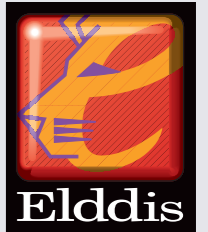
Outside you will also find a highly reflective rear visibility panel, heavy-duty corner steadies, an awning warmer and an exterior gas barbecue point.

The exterior access door opens to reveal a handy 230v output socket, ideal for when you want to watch TV in your awning.



Crusader Superstorm

Crusader



Crusader Cyclone



Crusader Cyclone

Crusader - Interior Living Space

All Crusader models are upholstered in the stunning new Xander, which brings even more elegance to the range.

Montreal Maple veneer furniture and wallboard give the interior appearance a distinctive style, whilst all worktops and occasional table tops are finished with decorative laminate.

Fixed bed models feature the exclusive 'So Comfortable' mattress, which ensures you have one of the best night's sleep you will ever have in a caravan.

The Sony CD/Radio now features I-Pod/MP3 connectivity via a hard-wired jack plug socket.

The Kitchen

The Spinflo 3 burner hob with high-speed multi-function burner can accommodate large saucepans up to 25cm, round and flat bottom woks up to 36cm as well as frying pans up to 24cm. Add to this the Prima Mark3 oven and new stainless steel finish 700W supplied as standard and everything from a simple cooked breakfast to a full evening meal is easily catered for.

The Argent stainless steel linen effect sink comes complete with a chopping board and integral drainer.

Storing food in the fridge now becomes an easy task with the new fully electronic Thetford 113ltr fridge with LCD display and the 150ltr Dometic 7651L fridge freezer.



700W Microwave



Crusader Cyclone



Crusader Cyclone



Crusader Cyclone

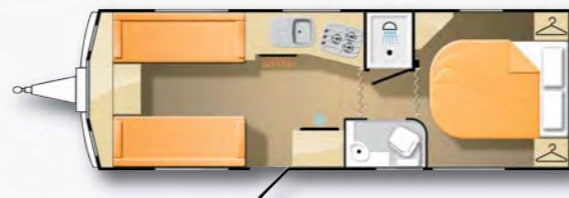
Crusader

Eddis Crusader Collection



Supersirocco - 4 Berth

Length (Int.) 6325mm / 20'9"
 Length (Ext.) 6998mm / 23'
 Width (Ext.) 2286mm / 7'6"
 Bed Options *Front:* 1 x Double
Rear: 1 x Double Fixed Bed



Cyclone - 4 Berth

Length (Int.) 6325mm / 20'9"
 Length (Ext.) 6998mm / 23'
 Width (Ext.) 2286mm / 7'6"
 Bed Options *Front:* 2 x Single OR 1 x Double
Rear: 1 x Double Fixed Bed



Supercyclone - 4 Berth

Length (Int.) 6325mm / 20'9"
 Length (Ext.) 6998mm / 23'
 Width (Ext.) 2286mm / 7'6"
 Bed Options *Front:* 1 x Double
Rear: 2 x Single Fixed Beds



Superstorm - 6 Berth

Length (Int.) 6325mm / 20'9"
 Length (Ext.) 6998mm / 23'
 Width (Ext.) 2286mm / 7'6"
 Bed Options *Front:* 1 x Double
Rear: 2 x Single OR 1 x Double, 2 x Bunks



Crusader Xander Upholstery



Crusader Cyclone



CRUSADER TECHNICAL SPECIFICATIONS

Model		Supersirocco	Superstorm	Cyclone	Supercyclone
Number of Berths		4	6	4	4
Interior Length		6325mm / 20'9"	6325mm / 20'9"	6325mm / 20'9"	6325mm / 20'9"
Exterior body length		6998mm / 23'	6998mm / 23'	6998mm / 23'	6998mm / 23'
Shipping Length		8049mm / 26'5"	8049mm / 26'5"	8049mm / 26'5"	8049mm / 26'5"
Overall Width		2286mm / 7'6"	2286mm / 7'6"	2286mm / 7'6"	2286mm / 7'6"
Overall Height		2600mm / 8'6.5"	2600mm / 8'6.5"	2600mm / 8'6.5"	2600mm / 8'6.5"
Maximum Headroom		1908mm / 6'3"	1908mm / 6'3"	1908mm / 6'3"	1908mm / 6'3"
Interior Width		2150mm / 7'1"	2150mm / 7'1"	2150mm / 7'1"	2150mm / 7'1"
Wheel Rim		5.5J x 14	5.5J x 14	5.5J x 14	5.5J x 14
Tyre Size		175/65 R 14 86	175/65 R 14 86	175/65 R 14 86	175/65 R 14 86
Tyre Pressure at MTPLM in psi		40	40	40	40
Brake Size		200/50	200/50	200/50	200/50
Bed Sizes mm / feet		10570mm / 34'8"	10570mm / 34'8"	10570mm / 34'8"	10570mm / 34'8"
	Front Beds	1x Double 2140mm x 1344mm 7'0" x 4'4"	1x Double 2140mm x 1344mm 7'0" x 4'4"	2x Single 1830mm x 720mm 6'0" x 2'4" or 1x Double 2140mm x 1430mm 7'0" x 4'7"	1x Double 2140mm x 1344mm 7'0" x 4'4"
	Rear Beds	Fixed bed 1x Double 1830mm x 1270mm 6'0" x 4'2"	2x Single 1830mm x 690mm 6' x 2'3" or 1x Double 2014mm x 1430mm 6'7" x 4'8" and 2x Lift up bunks 1650mm x 570mm 5'4" x 1'10.5"	Fixed Bed 1x Double 1843mm x 1346mm 6'1" x 4'5"	Fixed Beds 2 x Single 1906mm x 790mm 6'4" x 2'7"
M.T.P.L.M.		1900kgs / 37.32cwt	1900kgs / 37.32cwt	1900kgs / 37.32cwt	1900kgs / 37.32cwt
Mass in Running Order		1639kgs / 31.29cwt	1619kgs / 31.82cwt	1639kgs / 31.29cwt	1639kgs / 31.29cwt
Essential Habitation Equipment		93kgs / 1.82cwt	93kgs / 1.82cwt	93kgs / 1.82cwt	93kgs / 1.82cwt
Maximum User Payload		261kgs / 5.12cwt	281kgs / 5.51cwt	261kgs / 5.12cwt	261kgs / 5.12cwt
Maximum Hitch Weight		100kgs / 1.96cwt	100kgs / 1.96cwt	100kgs / 1.96cwt	100kgs / 1.96cwt
Optional Equipment payload		28kgs / 0.55cwt	28kgs / 0.55cwt	28kgs / 0.55cwt	28kgs / 0.55cwt

A manufacturing tolerance has been added to Mass in Running Order before calculating the Maximum User Payload.
 Maximum User Payload includes Essential Habitation Equipment, Personal Effects and Optional Equipment.
 Note 1: Please take care to ensure that you have allowed for the masses of all items you intend to carry in the caravan.
 Note 2: Warning under no circumstances must the Technical Permissible Laden Mass of the caravan be exceeded.
 Note 3: All data is calculated using metric weights and measurements. The imperial figures quoted are conversions thereof.

Eddis Range Comparison

EXTERIOR	Avanté Club	Odyssey	Crusader
Full height GRP front panel	NEW	NEW	✓
Large gas locker door with 2 gas struts	NEW	✓	✓
Full height ABS rear panel	NEW	✓	✓
Aluminium distinctive side skirts	NEW	X	X
Recessed jockey wheel with nose weight indicator	NEW	NEW	✓
Maximum width 7'6" (2286mm) wide	X	✓	✓
Body shell 7'4" exterior width	NEW	X	X
Exterior graphics	NEW	NEW	NEW
Eddis Chrome effect Injection moulded badge	NEW	X	X
Exterior high level brake light	X	✓	✓
Jokon LED high level brake light	NEW	X	X
Jokon round rear light clusters	X	✓	✓
Jokon vertical rear light clusters	NEW	X	X
High level marker Light	NEW	✓	✓
Jokon awning light	NEW	✓	✓
Stainless steel grab handles front and rear	NEW	✓	✓
BPW Swing V-Tec chassis	NEW	✓	✓
ABS hitch cover	NEW	✓	✓
Easy action handbrake	NEW	✓	✓
Winterhoff WS3000 stabiliser (Standard Fit)	NEW	✓	✓
Big Feet corner steadies	X	NEW	✓
High Powered Silver alloy wheels with new branded brushed metal wheel centres	NEW	NEW	NEW
Balanced Alloy wheels	NEW	✓	✓
Steel spare wheel complete with carrier	NEW	✓	✓
Gas bottle storage - Designed to take the new BP Gas Light bottle and traditional steel bottle	NEW	✓	✓
Elbbe one piece exterior door with window & waste bin	X	X	✓
Hartal entrance door 2 piece with privacy window & metal handle	NEW	NEW	X
Polyplastic 4.26 double glazed flush fit front windows	X	✓	✓
Polyplastic contoured front windows	NEW	X	X
Polyplastic series 4.28 side and rear windows	NEW	X	X
Seitz series S6.4 privacy glass side & rear windows c/w cassette blinds and fly screens	X	✓	✓
Large rear exterior underbed access door (Except island bed models)	NEW	✓	✓
INTERIOR	Avanté Club	Odyssey	Crusader
Hartal integral entrance door bin with lid	NEW	NEW	X
Horrex easy slide full door flyscreen	NEW	✓	X
Montreal Maple furniture	X	✓	✓
Montreal Maple wallboard	X	✓	✓
Vienna Pear furniture with silver frost locker rails	NEW	X	X
Andaman Silk wallboard	NEW	X	X
Ella blue bathroom wallboard	NEW	NEW	NEW
Lambourn ceiling material	NEW	NEW	NEW
Stainless Steel effect kitchen wallboard	NEW	✓	✓
Upholstery	NEW	NEW	NEW
Loose lay removable carpet	NEW	✓	✓
Black door mat and tray with Eddis inset decal	NEW	✓	✓
Horrex folding doors	NEW	✓	✓
Curved interior doors	NEW	✓	✓
Drop down bed box doors to front dinette	NEW	✓	✓
Pocket sprung mattress with NEW Petra lining fabric (Fixed bed models only)	X	NEW	NEW



Avanté Club 462



Odyssey 540



Crusader Superstorm

INTERIOR (CONT.)	Avanté Club	Odyssey	Crusader
One piece double bed, sprung mattress with NEW Aden lining fabric (Fixed double beds only)	NEW	X	X
One piece metal bed frame c/w easy lift gas struts (Fixed bed models only - NEW for Supercyclone)	NEW	✓	✓
Slide out table extension (Not in L shaped lounges)	NEW	✓	✓
Formica Decorative laminate to all furniture work tops and tables	NEW	NEW	NEW
Silver tambour doors (Avanté 474 & 626 only)	NEW	X	X
Silver Venetian blind (Avanté 544 & 624 layouts only)	NEW	X	X
KITCHEN	Avanté Club	Odyssey	Crusader
Thetford 113ltr (Gross capacity) fridge fully electronic with LCD	NEW	NEW	NEW
Dometic 7651 L 150ltr electronic Fridge Freezer (All Crusader layouts except Superstorm)	X	X	✓
700w Microwave stainless steel finish complete with surround/ventilation system	NEW	NEW	NEW
Domestic style stainless steel framed Spinflo Midi Prima Oven Unit	NEW	X	X
Domestic style stainless steel framed Spinflo Midi Prima Oven Unit with Illumination & 2 shelves	X	NEW	NEW
Spinflo 3 burner hob with large high-speed multi-function burner	NEW	✓	✓
Argent stainless steel sink & Drainer	NEW	NEW	NEW
Dimatec Metal Domestic style kitchen & bathroom taps	NEW	NEW	NEW
Chinchilla glass sink & hob covers (Can be used as a cutting surface)	NEW	✓	✓
Bespoke silver wash bowl	NEW	✓	✓
Lift up kitchen worktop extension on 484 / 534 / Rallye 634 models	NEW	✓	✓
Adjustable cutlery tray	NEW	✓	✓
Chrome cup and plate rack	X	✓	✓
Cup & separate plate rack	NEW	X	X
WASHROOM	Avanté Club	Odyssey	Crusader
Shower riser plinth (362, 505 & 556 only)	NEW	X	X
Jomal space saving bathroom vanity (All layouts except 462, 524 & 624)	NEW	X	X
Domestic style half inset basin (462, 524 & 624 layouts only)	NEW	X	X
Circular shower cubicle (462, 482, 524, 624, Supersirocco & Supercyclone layouts only)	NEW	✓	✓
Fully lined shower cubicle with Domestic style shower door (Except 482, 524, Supersirocco & Supercyclon layouts)	X	NEW	NEW
Door aluminium frame (All layouts except 462, 524 & 624)	NEW	X	X
Roman blind to end washroom models	X	NEW	NEW
Lever lock on toilet doors	NEW	✓	✓
Contemporary polished chrome washroom fittings	NEW	NEW	NEW
Dimatec Metal Shower/head & hose	NEW	NEW	NEW
Anti-bacterial non-slip shower mat	NEW	NEW	NEW
Thetford electronic flush swivel cassette toilet (Except Avanté 362, 474, 505, 544, 566 & 626)	NEW	✓	✓
Thetford electronic toilet with easy use waste cassette (Except 462, 524 & 624 layouts)	NEW	X	X
PLUMBING & HEATING	Avanté Club	Odyssey	Crusader
Truma Ultraheat Piezo fire	NEW	X	X
Truma Rapid blown air heating system	NEW	✓	✓
Truma Ultrastore water heater	NEW	✓	✓
Whale high-flow on-board pump system with carbon filter	NEW	NEW	NEW
Whale waterline system	X	NEW	NEW

PLUMBING & HEATING (CONT.)	Avanté Club	Odyssey	Crusader
40L On-board fresh water tank (Easy change over)	X	X	✓
Blown air heating outlet in bedroom (Fixed bed layouts only)	NEW	✓	✓
ELECTRICAL	Avanté Club	Odyssey	Crusader
Zoe eyeball 12v reading lights	X	✓	✓
BCA mains 230v wall lights	X	NEW	NEW
12v Lumo Crown Ice ceiling lights	X	✓	✓
Lumo 12v kitchen light	NEW	✓	✓
Sargent Stem reading light	NEW	X	X
Lumo 12v Dinette corner lights	NEW	X	X
Lumo 12v roof light	NEW	X	X
Sargent downlights	NEW	X	X
Wardrobe light	X	NEW	✓
Omnivent 12v 2-way fan	NEW	✓	✓
Heki rooflight (x2 on fixed bed models)	NEW	✓	✓
Exterior access door with 230v output socket on all models	X	✓	✓
240v 20A charging system with PDU system	NEW	X	X
Rear bedroom TV shelf c/w 12v, 230v & aerial sockets in 540 layout	X	✓	✓
ENTERTAINMENT	Avanté Club	Odyssey	Crusader
Status omni-directional TV aerial	NEW	NEW	✓
Sony CD Radio Tuner with I-Pod/MP3 player connectivity with AM antenna	NEW	NEW	✓
130mm diameter Sony stereo speakers	NEW	NEW	NEW
SECURITY	Avanté Club	Odyssey	Crusader
CRiS Identity number etched to caravan chassis & all windows	NEW	✓	✓
Concealed security data chip	NEW	✓	✓
Microtag security marking kit	NEW	✓	✓
Anti-wind locking bolts to rear corner steadies	NEW	✓	✓
Autowatch security alarm system with new roof sensor	X	NEW	NEW
Single key operation to all exterior lockers and doors	NEW	✓	✓
All models comply with British & European safety standards	NEW	✓	✓
ACCESSORIES SUPPLIED FREE OF CHARGE WITH RANGE	Avanté Club	Odyssey	Crusader
Owners Information Pack (Contains Owners Handbook and appliance manufacturers user manuals, boiler fuses, regulatory certificates and forms)	NEW	✓	✓
Large plastic step	NEW	✓	✓
Wheel brace and corner steady handle	NEW	✓	✓
Wheel locating pins (Easy assist to wheel change)	NEW	✓	✓
25m 230v hook up lead	NEW	✓	✓
Whale plug hose & filter assembly	NEW	NEW	NEW
Thetford Aqua Kem pack	NEW	✓	✓
Status aerial customer pack	NEW	✓	✓
Battery tray	NEW	✓	✓
2 x Corner steady locking pins	NEW	✓	✓
Male coaxial plug and 12v plug	NEW	✓	✓
Sink plugs, washing up bowl, Grill pan	NEW	✓	✓
Microtag security marking kit	NEW	✓	✓
Big feet corner steady pads	X	NEW	✓
Wastemaster	X	X	✓
Shower Mat	NEW	✓	✓

X = not available, ✓ = available, NEW = new design or to this model

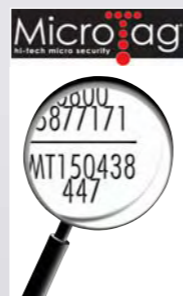


Elddis Security Systems

Theft Deterrent, Prevention and Security of your touring caravan, this is taken very seriously with Elddis. That is why we have provided a combination of features designed to deter & prevent thieves from stealing your property.

Microtag©

Supplied as standard with every Elddis touring caravan, MicroTag© is an innovative and technologically advanced property tracing system that can be easily applied to all your valuables, in the unlikely event that your caravan is stolen.



Marking your property with Microdots not only deters theft, but will also help lead to the successful prosecution of the thief and the recovery of your stolen valuables.

Why Use Microdots? - In order for the Police to successfully prosecute, it is necessary to identify the true owner of stolen property. Marking your property with Microdots is the easiest way to ensure your valuables are quickly identified.

You can Microdot all kinds of property against theft including your touring caravan, motor vehicles, televisions, bicycles, jewellery, in fact anything of value to you, that will also be of value to a thief.

In the event of theft or loss the police can locate the MicroDot by using an ultra violet light. The MicroDots are then read using a MicroDot reader, or a conventional microscope. Each MicroDot is laser etched with a free phone helpline and your own unique number which is registered on the International Security Register, manned 24 hours a day, 365 days a year.

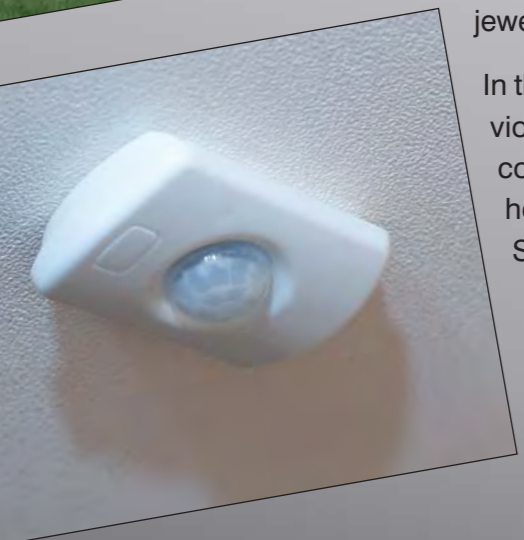
Explorer Protect - Autowatch Alarm system

The Explorer Protect system is fitted as standard on the Odyssey and Crusader ranges and is manufactured by Autowatch,

The Explorer Protect system is designed to give years of trouble free operation. Made with only the highest quality components and using state of the art technology you can be assured that your caravan has the best electronic protection available.

Each caravan alarm is installed with a Passive Infrared Detector (PIR), a wireless sensor that detects movement in the caravan and transmits a radio signal to the alarm module. If the alarm is on the siren will sound. A leg sensor, fully sealed against dust and water, detects if the corner stabilising leg is being raised or lowered and transmits a coded radio signal to the alarm.

Additional sensors can be purchased from your retailer to enhance security.



Product Development

BPW Swing V -Tec Chassis

The Elddis range of touring caravans features the advanced Swing V -Tec axle- chassis system from BPW, quite simply because we believe it to be the best available.

Our rigorous testing at UK and European proving grounds and vehicle test track facilities has proven its superb reliability and stability.

BPW are the European market leader with over 10 million axles sold world wide and an enviable reputation for producing high quality equipment. BPW axle and suspension systems are designed for high performance, reliability and low maintenance.

The main advantages of the Swing V-Tec chassis are:

- Improved ride stability due to a dynamic self-steering effect (unnoticeable in normal towing conditions), reducing the risk of swaying, sideways movement and side wind sensitivity.
- Greater stability even with sudden steering manoeuvres giving a wider margin of safety in an emergency situation.
- Excellent cornering ability due to increased tyre contact with the road, minimising body roll.
- Safer at high speed.

Winterhoff Stabiliser

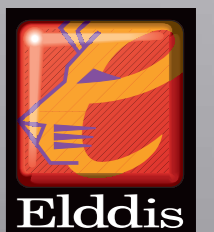
The Winterhoff WS3000 is a convenient single lever system for easy coupling and stabilising. The special friction pads in the coupling are pressed against the tow ball of the towing vehicle under high spring pressure, thus suppressing dangerous snaking and pitching motions of the touring caravan before they build up.

The main advantages of the WS3000 Stabiliser are:

- Dampens snaking and pitching of the touring caravan.
- Allows more space between rear door mounted spare wheels, common on 4x4 tow vehicles and the stabilizer.
- Easy to read wear indicator.
- Clip system for easy replacement of the friction pads.
- Ease of engagement and disengagement.

When combined with the Swing V-Tec chassis, the WS3000 offers the ultimate towing experience, but don't just take our word for it. RWTÜV Essen, an independent organisation, carried out detailed comparative tests of all towing ball couplings and stabilising gear on the market (The stabilizer tests were carried out during July and August 2004).

These tests included criteria such as safety during towing, construction type related limited values, handling and maintenance of each system with a variety of weights. The comparative investigations were carried out at the Institute for Vehicle Technology in Essen, Germany and on the test area at Trier-Föhren Airfield. The test winner was the Winterhoff WS3000.





Elddis



NATIONAL CARAVAN
COUNCIL LIMITED

Elddis Owners Club

As a Elddis owner, you are eligible to join the Elddis Owners Club. With a huge number of rallies and wide range of activities to take part in, membership adds a whole new dimension to the fun you can have and the friends you can make whilst enjoying your touring caravan.

For more information about the Elddis Owners Club, visit www.elddisowners.co.uk or contact:

Mr J Harrison, General Secretary, Elddis Owners Club,
9 Brookside Avenue, Bedale, North Yorkshire DL8 2DP
Tel: 01677 422248



Elddis on the Web

Details of your nearest retailer, latest news and useful downloads, as well as videos of all Elddis vehicles can be found on our fully detailed website at:

www.elddis-caravans.com

Elddis is Freedom

This brochure does not constitute an offer by The Explorer Group Limited (Explorer). Explorer reserves the right to, and does alter from time to time, technical specifications, prices and model ranges as materials, model improvements and conditions require, and can accept no responsibility for discrepancies between these and subsequent models shown. This brochure and the photographs used are for guidance purposes only. Please be sure to check full current and technical specifications with your retailer before ordering your new touring caravan. All household items illustrated in the brochure are used to enhance photography and are for display purposes only. They are not supplied with your touring caravan. Please note that Approved Retailers are not the agents of The Explorer Group Limited. Accordingly they have no authority to bind Explorer or to make any representation or undertaking whatsoever on behalf of Explorer.

Thanks to Nissan, Landrover and Volvo for kindly supplying the support vehicles for the photography.

The Explorer Group Limited
Manufacturers of Touring Caravans & Motorhomes

Explorer House, Delves Lane, Consett, Co.Durham DH8 7PE

Tel: 01207 699 000 Fax: 01207 699 001

www.explorer-group.co.uk