

n e w

Welcome 72

Made
with your
happiness
in mind.



CHAUSSON
www.chausson.tm.fr

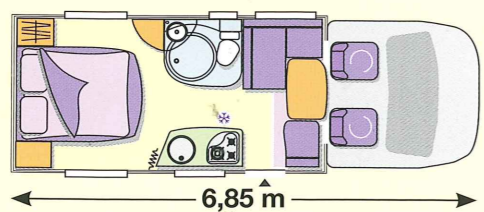
n e w

Welcome 72

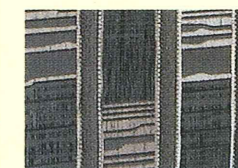
Made with your happiness in mind!

Introducing **the new Chausson model: Welcome 72!** Recently launched in the UK following huge success in Continental Europe, it has all the qualities of a well established motor home. Where comfort is concerned, it has all the characteristics of the large Chausson range and is even one of the rare motor homes measuring less than 7 metres to have a main bed with generous dimensions. Of course, the new Welcome 72 features all the strong points of the range: skylight, interior design and the clever T-SYSTEM which enables electric adjustment of table height. And all this at an unbeatable price!

What if you gave your happiness a whole new level in the Welcome 72?



Welcome 72 Malibu.



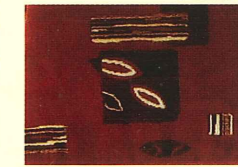
Moorea



Malibu



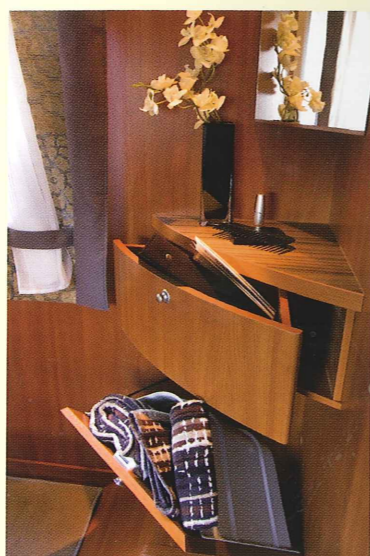
Azzaro



Formosa



Double skylight as standard



Welcome 72 is kitted out with the T-SYSTEM which enables electric adjustment of table height for maximum comfort in every situation.

CHARACTERISTICS	WELCOME 72
BASE VEHICLE	FIAT DUCATO CHASSIS SPECIAL CC 35L 3800
Standard engine	2,3 L
Engine power	130 CH
Cylinders	2287 cm ³
Fuel tank capacity	90 L
Max. torque m. ND/RPM	320 à 2000
Manual gear box 6 position	S
Wide track rear axle 1980 mm	S
ABS	S
Power steering	S
Electric rearview mirrors	S
Electric windows	S
Cab doors central locking	S
Ignition interlock system	S
Driver seat adjustable for height	S
Passenger seat adjustable for height	S
Cab seats with double armrest	S
Cab seat covers with matching cushions	S
Driver air bag	S
Passenger air bag	S
Pre-wired radio (cabin) + LS - Dash board kit	S
Cab shaded by insulating curtains	S
Cab carpet	S
Front bumper in white	S
WEIGHT (Standard base vehicle without options)	
Vehicule bodycoach weight in running order (+/- 5%)	2940
Max technically permissible laden mass	3500
DIMENSIONS	
Overall length (excl. ladder)	6,84
Overall width	2,30
Overall height (excl. roof rack)	2,76
Interior height	1,98
Wheelbase	3,80
CAPACITY (Standard base vehicle without options)	
Seats authorised for road use without motorbike carrier*	4
Dining seats	4/5
Sleeping berths	3
EXTERIOR	
Polyester coachwork	S
Single block polyester front section	S
Rear and side protections in ABS	S
Storage locker with exterior access	S
2 x 13 kg propane gas bottle locker	1 x 13 kg
Anchor clips for bike-rack	S
INTERIOR	
Dividing curtain cab/living unit	S
Entrance door with flyscreen	S
Double-locking windows with combined blinds/screens (total number including Shower)	S
panoramic skylight 900 x 600	S
Cab skylight	S
12V fan skylight galley/living area /	S
2 x 3 point seat belts on seats facing direction of travel	S
Removable cushion covers	S
TV cabinet/point	S
TV Sliding plate	S
Electric telescopic table leg (T-system)	S
Dividing sleeping area	S
Removable fitted carpet in living unit	S

CHARACTERISTICS	WELCOME 72
BASE VEHICLE	FIAT DUCATO CHASSIS SPECIAL CC 35L 3800
KITCHEN	
Sink and 3 element inset hob	S
Gas refrigerator 12V / 220V	97 L
Grill	S
BATHROOM	
WC cassette removable from exterior	S
Separate shower with sliding partition	S
Fixed basin - medicine cabinet	S
Opaque window	S
Skylight with screen	S
WATER EQUIPMENT	
Fresh water capacity	140 L
Waste water capacity	109 L
Storage water heater with electronic ignition	S
HEATING	
Gas water heater	■
Boiler for the heating with pulsed air using vehicle fuel	S
ELECTRICAL EQUIPMENT	
Halogen spotlights	S
Lighting in locker	S
Exterior lighting	S
Living room ambiance lighting on the cupboards	
2 nd battery (leisure)	S
Fresh water level	S
Waste water level	S
Battery charge level indicator	S
Low battery voltage alarm living unit	S
220 V socket	2
12 V socket	2
TV preparation 12V / 220V (Bedroom and living room)	S
Radio preparation with 2 loudspeakers living units	S
SLEEPING BERTH DIMENSIONS	
Berth in central or forward dining area	90/50 x 215
Rear fixed bed	140 x 190
STORAGE DIMENSIONS : . Volumes and storage doors dimension	
Side on right	545 x 590
Facing rear	265 x 795
Gross capacity main locker dm ³	10

S : Standard equipment ■ : Can't be fitted on

Weight empty in running order: the weight empty in running order includes the weight of the driver (75 kg) and 90% of the water, fuel and gas tanks. Tolerance +/- 5%. The indicated weights empty in running order only take account of series equipment (+/-5%). The manufacturer reserves the right to alter this equipment list at any time.



SILVER OPTION Pack

- Metallic grey cab and front bumper.
- Cab air conditioning.

YOUR CHAUSSON DISTRIBUTOR

Panoramic virtual tour at www.chausson.tm.fr.



BP 109 - 07302 TOURNON CEDEX

Tel. (33) 04 75 07 55 00 - Fax (33) 04 75 07 55 58

Internet : www.chausson.tm.fr - E. mail : contact@chausson.tm.fr