



living in motion

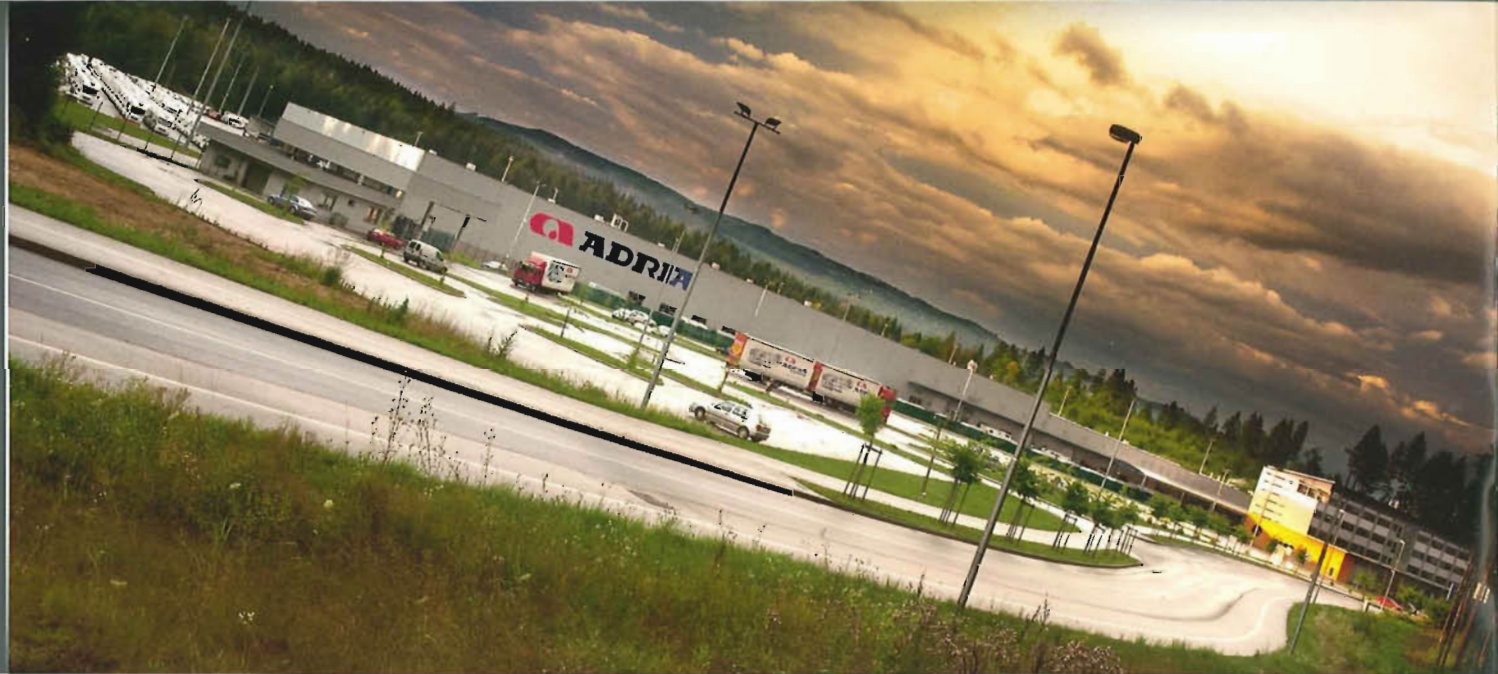
catalogue | adria caravans 2010





# adria mobil

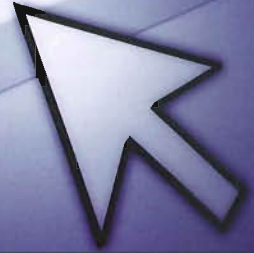
45 years on and Adria continues the Story of 'Living in Motion'. Sustainable quality and value for money products have ensured that Adria is firmly positioned as a leader in the production of leisure vehicles. Situated in the heart of Slovenia within beautiful countryside, Adria is ideally placed to be able to adapt to the needs and demands of over 25 different markets across Europe and the World.





Knowledge and teamwork combined with experience, tradition, high moral and personal dedication. These are just a few of the quality foundations that Adria's future is built on. High quality and open communications provide a symbol of excellence. It is this excellence that allows Adria to become your long-term leisure partner.

<http://www>



## The Adria Team... working for you.



2010... the next chapter in the Story of Motion. We believe that Adria vehicles offer you all you could wish for and more. At Adria we know that no two customers are the same – that is why we offer a wide range of models and choice of specifications to suit all tastes and budgets. Adria provides the 'complete offer' for 'value for money'.

[www.adriaconcessionaires.co.uk](http://www.adriaconcessionaires.co.uk)

info adria

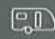
# The Future in Motion


Set yourself free in an Adria Caravan. No matter how many times you do it, there's always a thrill of excitement as you head out on the open road for another Adria adventure. We understand what you want in a Caravan and our products offer you all you could dream of and more.



## adiva

advanced beauty

 2 models


 Up to 4 berth



## adora

elegance and comfort

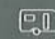
 4 models


 Up to 6 berth



## action

agile and unique

 1 model


 Up to 3 berth



## altea

simplistic and reliable

 4 models

 Up to 6 berth











adiva

## advanced beauty

True beauty comes from within, but it is noticed by the eye. Adiva catches the eye and blends the epitome of modern styling and craftsmanship with the latest in luxury technology. The new exterior of the Adiva instantly allows you to stand out from the crowd with its modern grey sides.



- ↔ Length from 7.43 M / 24' 2/4" to 7.44 M / 24' 5"
- ↔ Width 2.29 M / 7' 6 1/4"
- ↕ Height 2.61 M / 8' 6 3/4"
- 📦 Mass 1500 kg / 29.53 cwt to 1550 kg / 30,51 cwt
- 🗨️ 2 different Models
- 👤 4 people







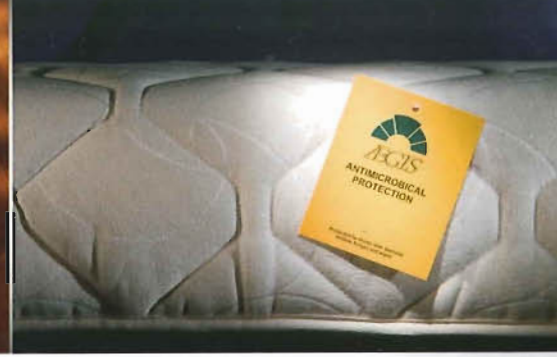




Spinflo Oven & Grill



Wardrobe



AEGIS - antibacterial mattress



standard textile ▶ Sandy BT

# adiva main features, equipment & models

- New coloured exterior plastic profiles and new style of graphics, compliment the durable polyester grey sidewalls.
- The new sized entrance door, which is taller and wider, will allow you easier access into the vehicle. There's also a fitted waste paper bin and entrance door flyscreen integrated.
- Inside the Adiva there is a complete makeover, the new furniture colour combines with a new style of floor vinyl and wall/ceiling boards (Spirit) to give a feeling of luxurious space.
- Soft furnishing schemes that delight the eye and are so comfortable you will not want to leave them once you have sat down.
- New worktops in 'Lucida' and new interior ceiling and spotlights complete the feeling of a modern and contemporary design.
- Opaque bathroom windows give you privacy whilst still allowing light to shine through.
- Strong body construction that uses no screws allows you years of usage.

ideal for couples ▶

4



4



No.

Number of berths



Kitchen



Table



Seating Area



Wardrobe



Berths



Bathroom



Floor

552 LT



552 PH



Spinflo Cooker



Shower & WC



50 l Water Tank









# adora

## elegance and comfort

Nothing is more welcoming after a long family walk than the feeling of comfort. Adora provides you with elegance and comfort in one. Quality construction including hard wearing polyester sides and roof will ensure you to get years of enjoyment. The Adora offers modern style, quality, value and a high level of specification.



- ↔ Length from 7.37 M / 24' 3/16" to 8.35 M / 27' 6/16"
- ↗ Width 2.29 M / 7' 6 1/4"
- ↑↓ Height 2.58 / 8' 5 1/2"
- 📦 Mass 1500 kg / 29.53 cwt to 1700 kg / 33.46 cwt
- 🗨️ 4 different Models
- 👤 4-6 people











Adora's stunning innovative layouts provide luxury comfort in abundance. Kitchens that could prepare the finest gourmet meals, the multimedia ready Adora provides dynamic design along with high specification; a true moving experience.

adora







Wardrobe



Fire Resistant Upholstery



ALKO chassis



Entrance door

# adora main features, equipment & models

- The new sized entrance door, which is taller and wider, will allow you easier access into the vehicle. There's also an integrated waste paper bin and entrance door flyscreen.
- Exterior graphics catch the eye whilst the strong body construction with a new technology that uses no screws allows you years of usage.
- Opaque bathroom windows give you privacy whilst still allowing light to shine through.
- Kitchen units benefit from a new design of 'rounded' corners while the whole interior receives new interior ceiling and spotlights.
- The Adora is pre wired for a CD/stereo system and has the speakers already fitted.







standard textile ▶ Kryptogram

optional textile ▶ Kryptogram Blue



 family friendly layouts ▶

6<sup>c</sup>



612 DT



 ideal for couples ▶

4<sup>c</sup>



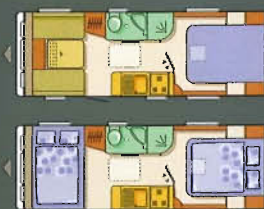
542 DL



4<sup>c</sup>



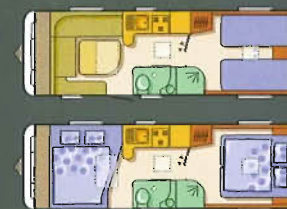
612 DP



4<sup>c</sup>



642 UP



No.

Number of berths



Kitchen



Table



Seating Area



Wardrobe



Berths



Bathroom



Floor



Spinflo Cooker





Compact, agile and lightweight. Action is the caravan for the young at heart. With its sporty and trendy appearance, the Action will ensure that you stand out from the crowd. Modern but practical, Action has everything you will require to make each vacation a fantastic adventure.

# action







Mini Heki roof window



Alloy Wheels



NCC approved



standard textile ▶ Klub 07 FR

# action main features, equipment & models

action

Exterior graphics catch the eye whilst the strong, full polyester body construction allows you years of usage.

The new sized entrance door, which is taller and wider, will allow you easier access into the vehicle. There's also an integrated waste paper bin and entrance door flyscreen.

Opaque bathroom windows give you privacy whilst still allowing light to shine through.

New features for the Actions interior for 2010 include: a new floor vinyl covering, new interior ceiling and spotlights

There is an optional panoramic window for those who want to lie back and see the stars at night.

The Action is the ultimate, easy to tow vehicle that is combined with dynamic design and a stunning appearance.

ideal for couples ▶

3<sup>+</sup>



No.

Number of berths



Kitchen



Table



Seating Area



Wardrobe



Berths



Bathroom



Floor

361 LH



equipment ▶



Compact



Spacious Luggage Box



Shower & WC



Polyester Exterior



40 l Water Tank



Alko Chassis





**ADRIA**

**Altea**





altea

## simplistic and reliable

Fresh like the early morning sun, the Altea range shines through with its rays of simplistic touring. Traditional and innovative layouts are combined with contemporary design and robust build, offering fresh and airy models with lasting reliability. Allow your family the refreshing experience of value for money touring with Altea.



- ↔ Length from 5.45 M / 17' 11" to 7.23 M / 23' 8 1/2"
- ↔ Width from 2.07 M / 6' 9 1/2" to 2.29 M / 7' 6 1/2"
- ↑ Height 2.58 M / 8' 5 1/2"
- 📦 Mass 1050 kg / 20.67 cwt to 1300 kg / 25.59 cwt
- 🏠 4 different Models for
- 👤 3-6 people



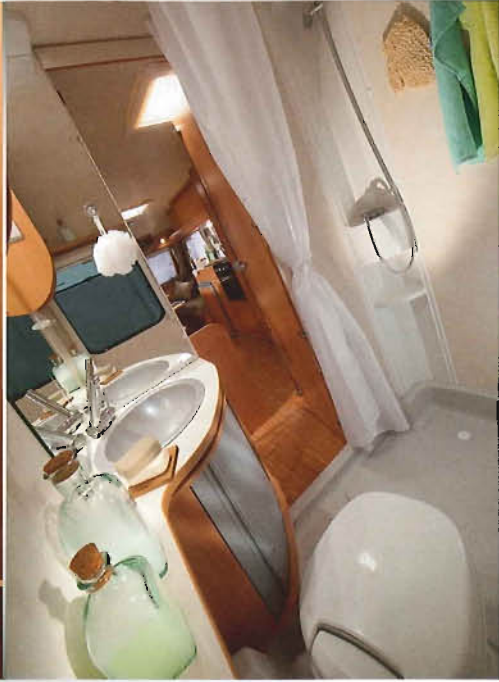








The Altea range offers fantastic lightweight touring combined with the necessary specification to ensure that your holiday is a memorable one. Beautifully crafted furniture is complimented with strong metal cupboard door support whilst the multifunctional kitchen provides everything at hand to prepare the family dinner.



altea





Spinflo Oven and Grill

Wardrobe

Fire Resistant Upholstery - high quality UK standard

New Entrance Door

# altea main features, equipment & models

- The new sized entrance door, which is taller and wider, will allow you easier access into the vehicle.
- Multifunctional kitchen (2+1) is very practical for the use and preparing delicious food for your dearest ones.
- Opaque bathroom windows give you privacy whilst still allowing light to shine through.
- There are new soft furnishing schemes, new interior ceiling and spotlights and a new floor vinyl covering, giving the Altea a modern look.
- New improved metal cupboard door support stays are substantially stronger.
- Light in weight, long lasting and affordable, yet built with a new technology that uses no screws giving a strong and robust construction allowing you years of usage.







standard textile ▶ Phoenix

family friendly layouts ▶

6<sup>c</sup>



6<sup>c</sup>



542 DK



542 DT



ideal for couples ▶

3<sup>c</sup>



4<sup>c</sup>



360 LT



390 DS



No.

Number of berths



Kitchen



Table



Seating Area



Wardrobe



Berths



Bathroom



Floor





living in motion



## Adria Concessionaires Ltd

Hall Street, Long Melford,  
Suffolk, CO10 9JP

Tel: 44(0) 1787 888980  
Fax: 44(0) 1787 888981

[info@adriaconcessionaires.co.uk](mailto:info@adriaconcessionaires.co.uk)  
<http://www.adriaconcessionaires.co.uk>

ADRIA MOBIL, d.o.o.

• Straška cesta 50 • 8000 Novo mesto • Slovenija  
Tel. ++386(0)7 393 71 00 • Fax: ++386(0)7 393 72 00  
• Email: [info@adria-mobil.si](mailto:info@adria-mobil.si) • Website: [www.adria-mobil.com](http://www.adria-mobil.com)

The purpose of the catalogue is illustrative. Pictures inside the catalogue may include some elements not belonging to standard equipment or portray products belonging to different markets. Products may change from technical or commercial points of view in respect of regulations. Please contact your selected Dealer to obtain detailed information before purchasing.

Published by: Adria Mobil, d.o.o.; Design and production: Enigma Novo mesto d.o.o., Brigita Jakovec; Photography: Branko Čeak, Jože Maček, Primož Lajevec; Styling: Nataša Mandelj-Čeak; Kitos: 1001 Dar, Freestyle, Golf Otočec, Hoteli Otočec - Restavracija Grad, Müller, Ribolov Sluga, Studio Drevo, Trudi, Veletekstil, Plesna šola 100% TANGO, Avtohiša Berus, Macoma; Lithography: Tomo Per; Printed by: Razvedrilo