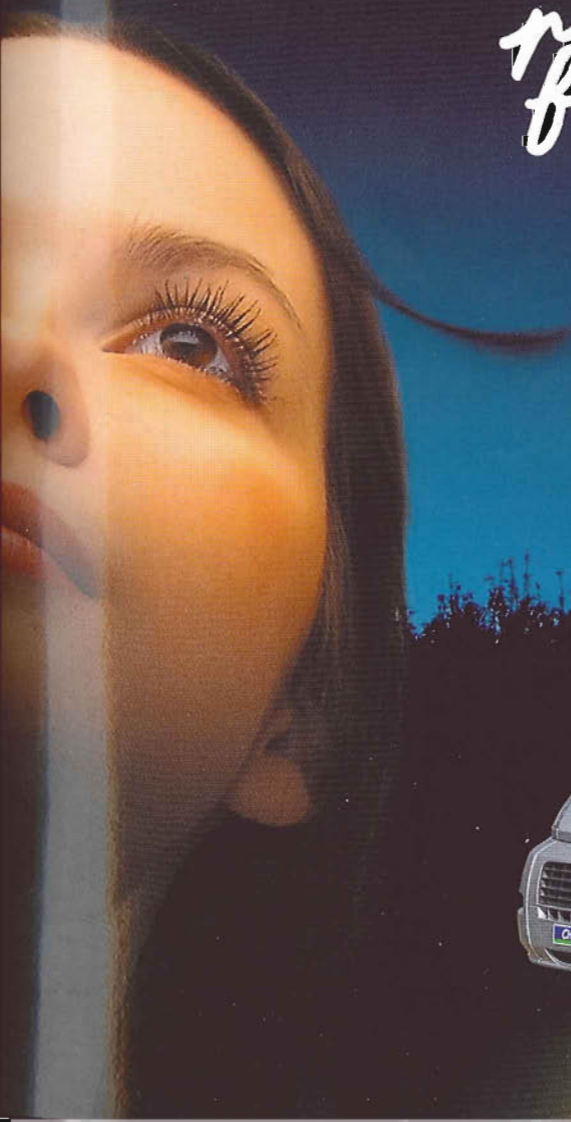


*Providing
pleasure
for 30 years!*



CHAUSSON

30 years of happiness, together...

30 years of passion, design and innovation home grown in France, a great reason to celebrate with Chausson! So flick through the pages to witness a fireworks display of equipment, clever interior design, new features, XXL comfort and unbridled pleasure and all this for very carefully studied prices... Ready to hop on the road to happiness with the new Chausson collection? Contact!



- 1 • Chausson network of 130 distributors in Europe.
- 2 • Digital machining workshop producing bodywork panels.
- 3 • Before delivery of each motorhome, Chausson proceeds with all roadworthiness operations: verification of parallelism, empty weight and complete cleaning.
- 4 • Simulator recreating rolling or parking conditions in the rain allowing intensive waterproofing tests.
- 5 • A customer relations department is specially dedicated to welcoming and advising users and relations with Chausson distributors. You may be received by appointment.
- 6 • Production site Tournon sur Rhône.



LEAKTIGHTNESS GUARANTEED FOR 5 YEARS

The waterproof exterior of your Chausson motorhome is covered by a 5-year water ingress (with an annual maintenance check by one of the Chausson network's certified members).

INTERIOR GUARANTEED FOR 2 YEARS

In addition to the 5-year leaktightness guarantee, Chausson also guarantees the interior decor for 2 years.



INTERNET

Find out all about our models, their features, and our distributor network, and take a virtual tour of a Chausson motorhome, by checking out our Internet site today! www.chausson.tm.fr



Chausson recommends **PRIMAGAZ**
(For the French market only).

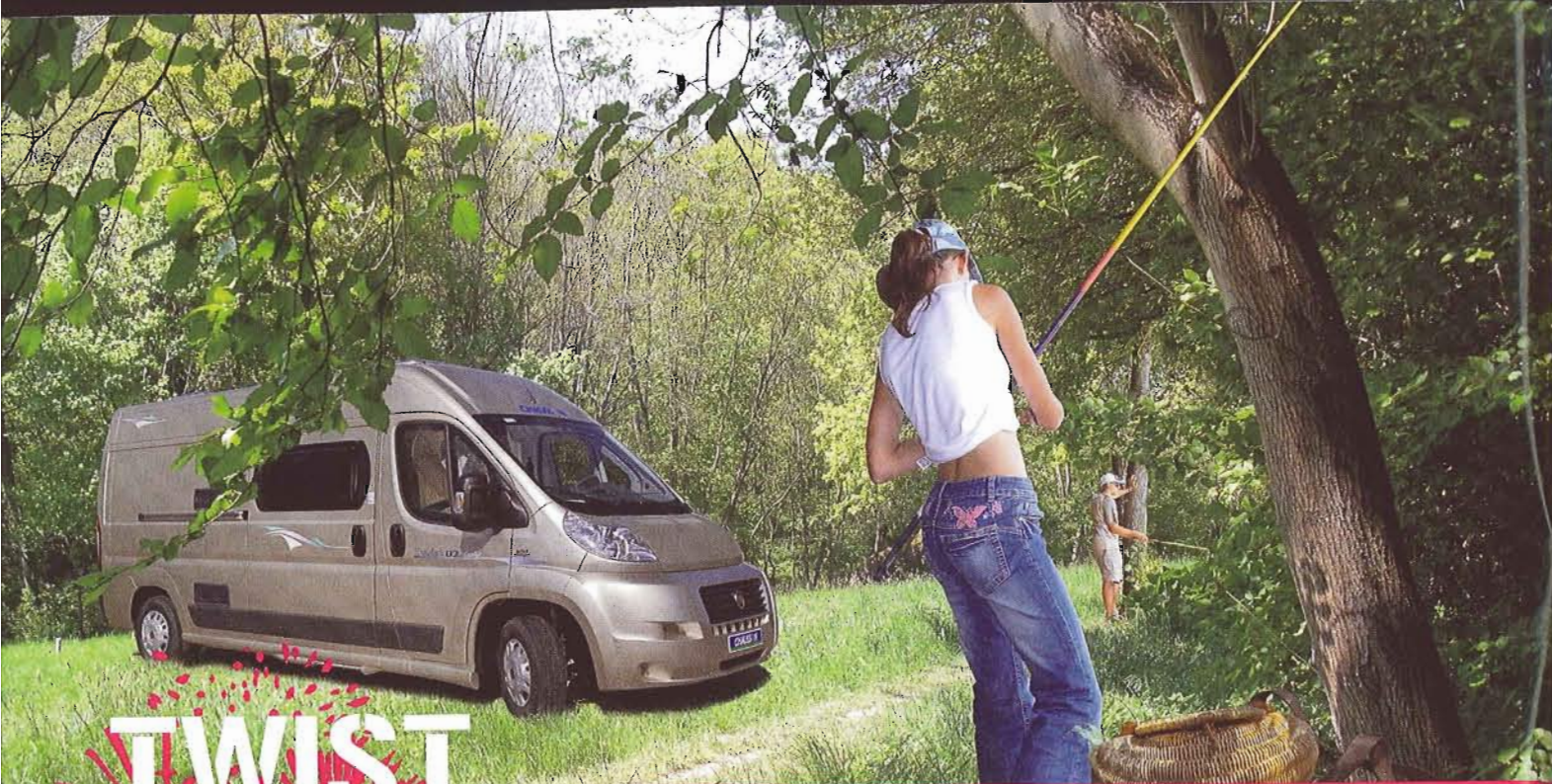


Chausson has chosen **LOISIRS FINANCE**, a financial partner specializing in financing recreational vehicles. Find out about its services and offers, and calculate financing on its internet site www.loisirs-finance.com. (For the French market only).



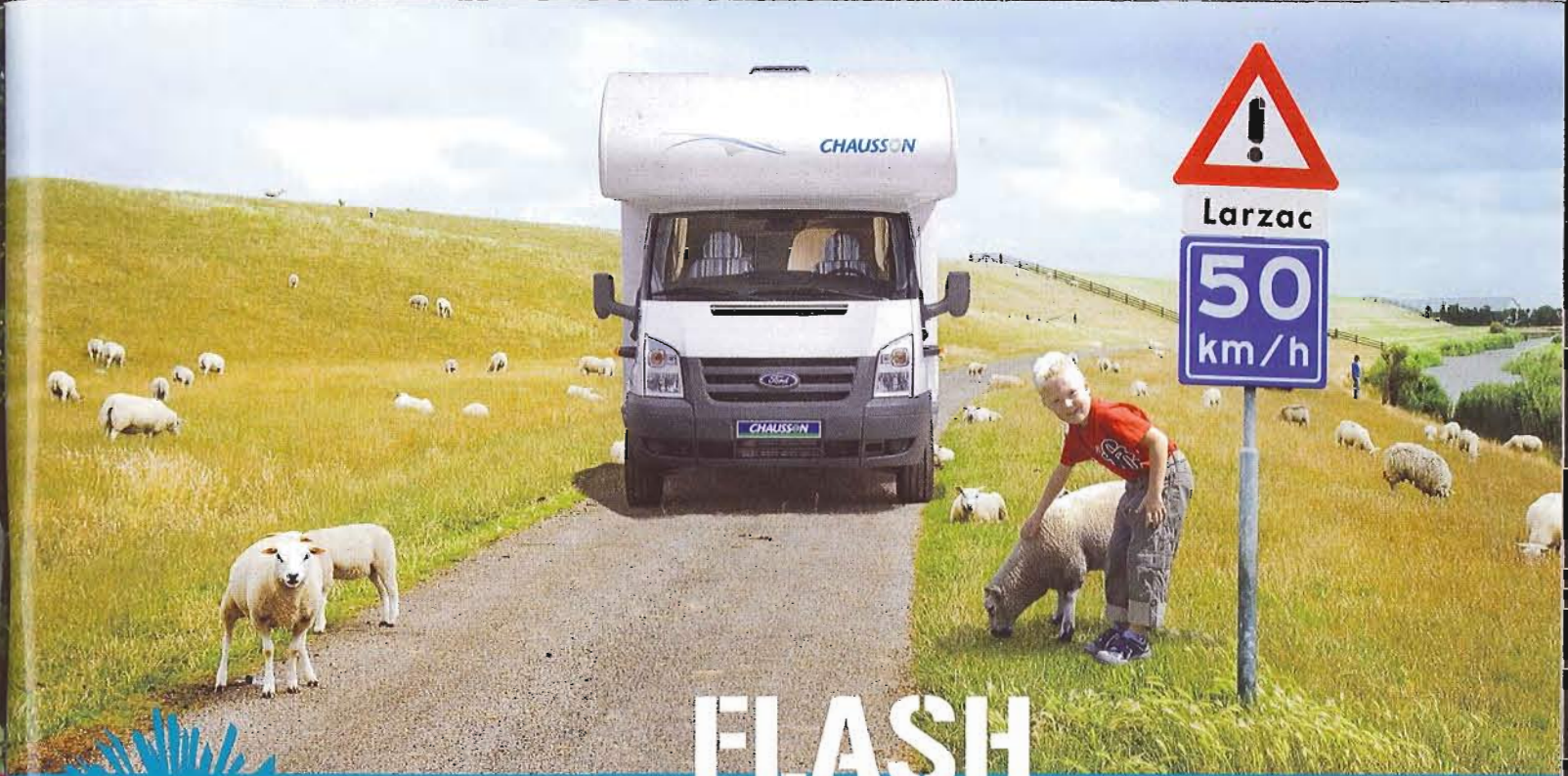
HERTZ, the world's leading rental company has chosen Chausson... Solid proof of our reliability!





TWIST

With Twist, rediscover the pleasure of getting out and about wherever and whenever you want, with nothing to hold you back... Twist is synonymous with all the know-how and experience of Chausson in a philosophy based on the best equipment at the best price.



FLASH

The Flash range of products stands for best equipment at the best price! Flash combines all the Chausson values studied to make motorhomes accessible to the greatest number of customers. Without giving up on the quality of manufacturing, finishing, and roominess or on anything that makes living on board possible ... Flash is the happiness of a true motorhome at a Chausson price!



WELCOME

Welcome brings to you the world of well equipped motorhomes at a very affordable price. Welcome combines the entire Chausson know-how available for over-the-cab and streamliner bodies -- an exceptional list of equipment and very well researched prices!



ALLEGRO

How about a top-of-the line motorhome without paying the price? With Allegro, Chausson grants you all your wishes! Because we should all be able to enjoy a little luxury without having to spend our entire budget in the process ... Allegro is the concentrated essence of all the Chausson know-how designed for the connoisseurs.





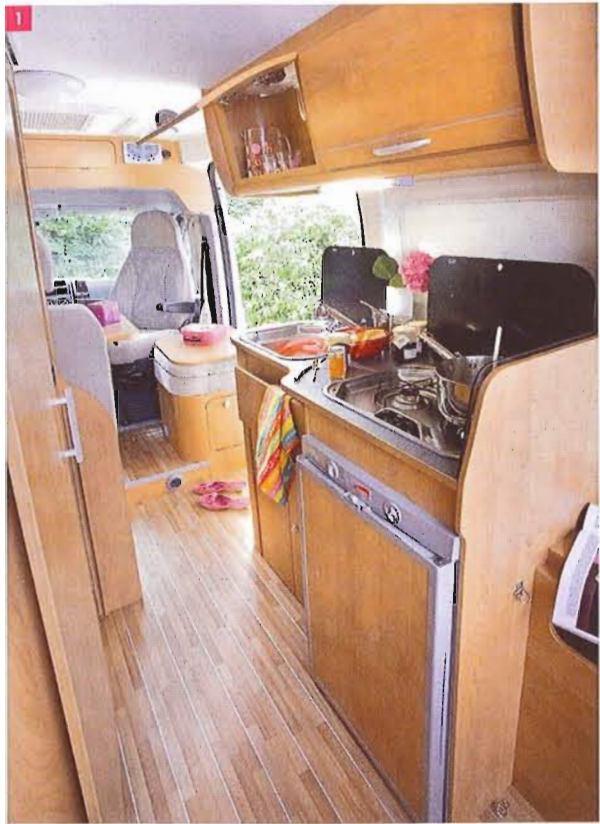
TWIST



TWIST 02 MAX ⁽¹⁾

- 1 • Twist 02 Max Prestige, Terra-cotta interior. (1)
- 2 • Double rear berth. (1)

- 3 • Shoe storage locker. (1)
- (1) Country dependent / See features table.



TWIST 03⁽¹⁾

- 1 • Kitchen with 77 L refrigerator. (1)
- 2/3 • Lounge transformation (third berth). (1)
- 4 • Twist 03 Active, Racing interior. (1)

(1) Country dependent / See features table.

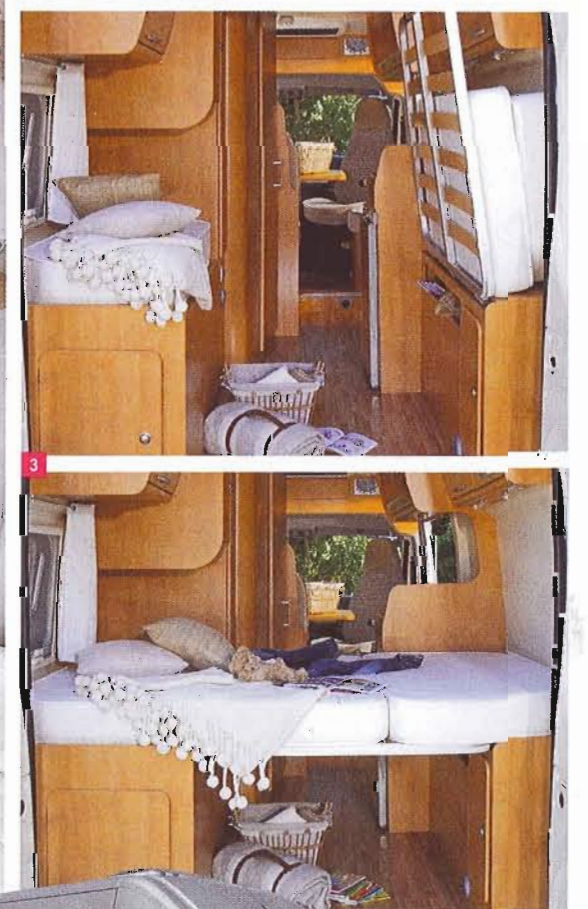
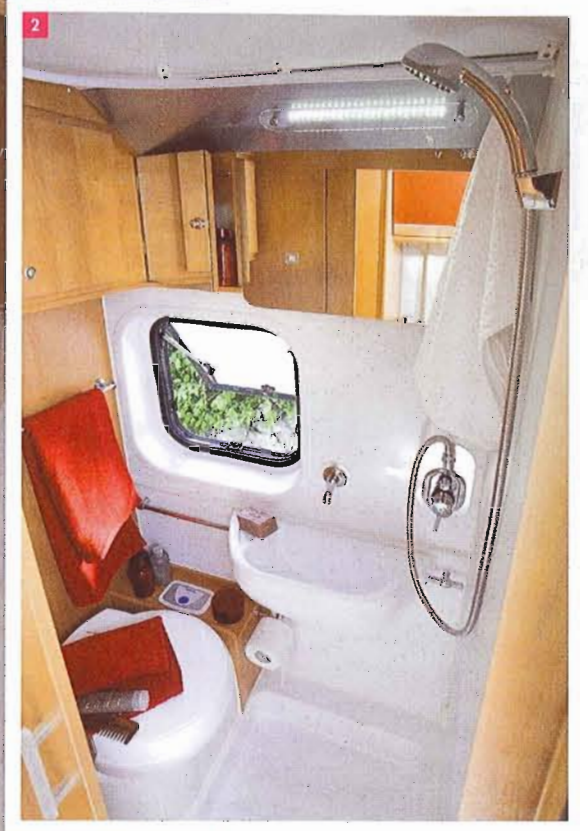




TWIST 02⁽¹⁾

- 1 • Twist 02 Prestige, Moka interior. (1)
- 2 • Functional bathroom with sliding basin and separate tap. (1)
- 3 • Adjustable rear berth (Twist 02 and Twist 03). (1)

(1) Country dependent / See features table.



FLASH



Flash15, Flash 06

The last word in comfort, yet affordable!

How can maximum functionality be reconciled with a minimum budget? The answer is in a Flash! Elegant, comfortable, equipped with unbeatable value for money equipment, this best seller on the market offers completely redesigned interior ambiances this year: cozy furniture, new curved doors for a more designer feel, refined lighting with energy-saving lamps... You will love this in a flash! (1)

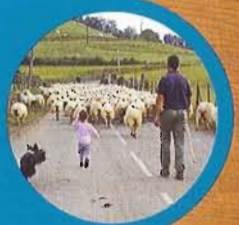


Flash FS1, Flash 03, Flash 13, Flash FS2, Flash 12

(1) Country dependent / See features table.



FLASH



- 1 • Flash 15 Fidji interior. (1)
- 2 • Flash S1 Amadeus interior. (1)
- 3 • Flash 03 Atlanta interior. (1)
- 4 • Flash 13 Tahiti interior. (1)

(1) Country dependent / See features table.





FLASH



1 • Flash 12
Tahiti interior. (1)

2 • Flash S2
Fiji interior. (1)

3 • Flash 06
Atlanta interior. (1)

(1) Country dependent / See features table.

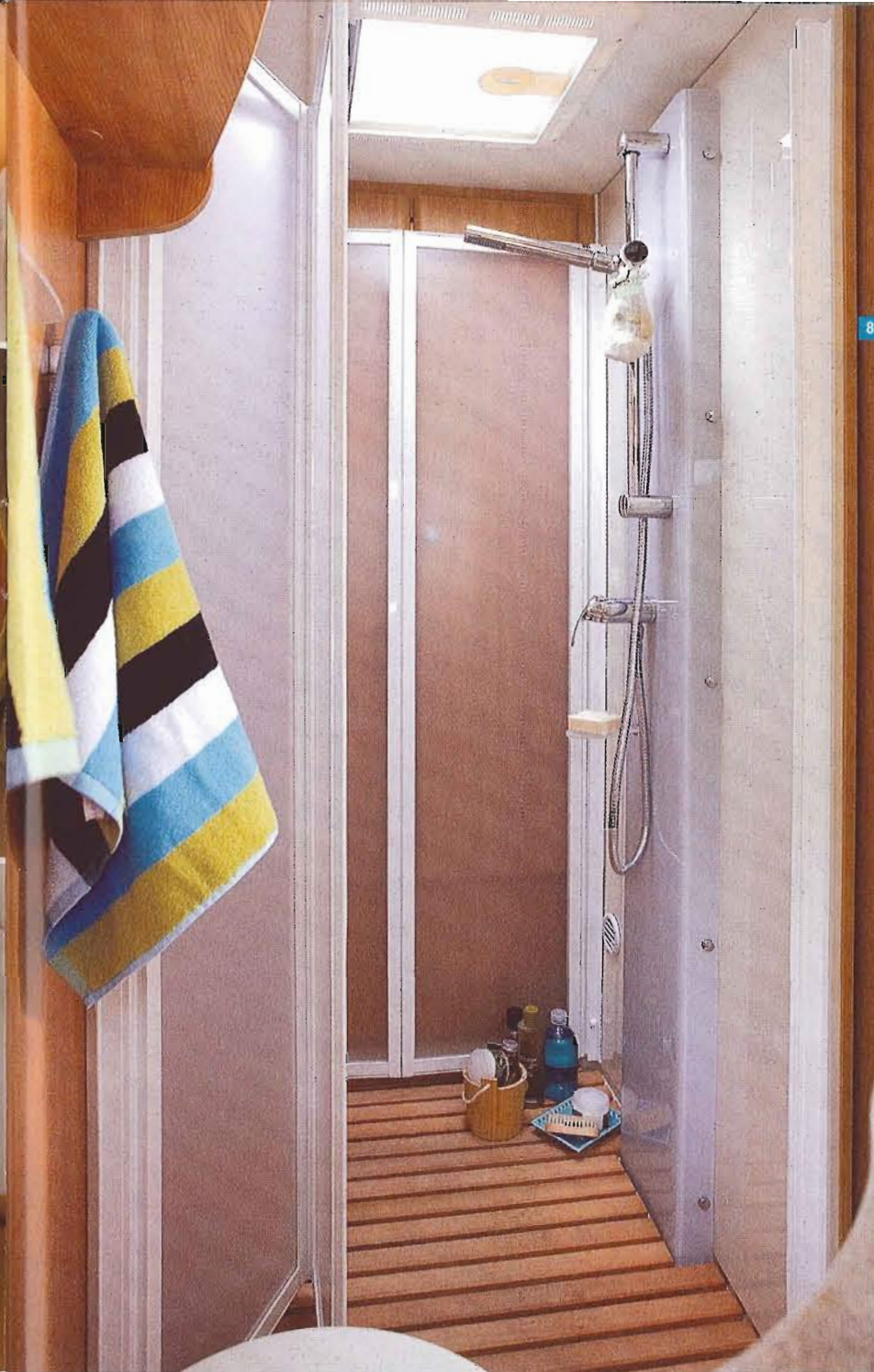
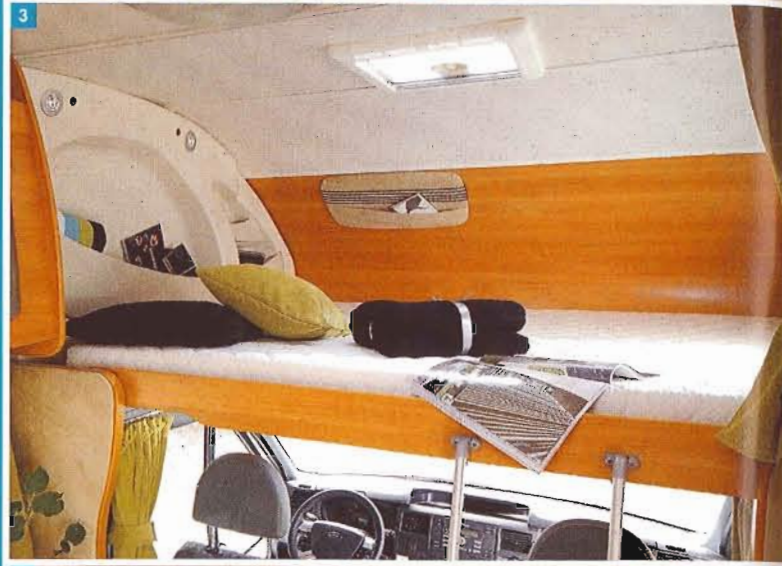


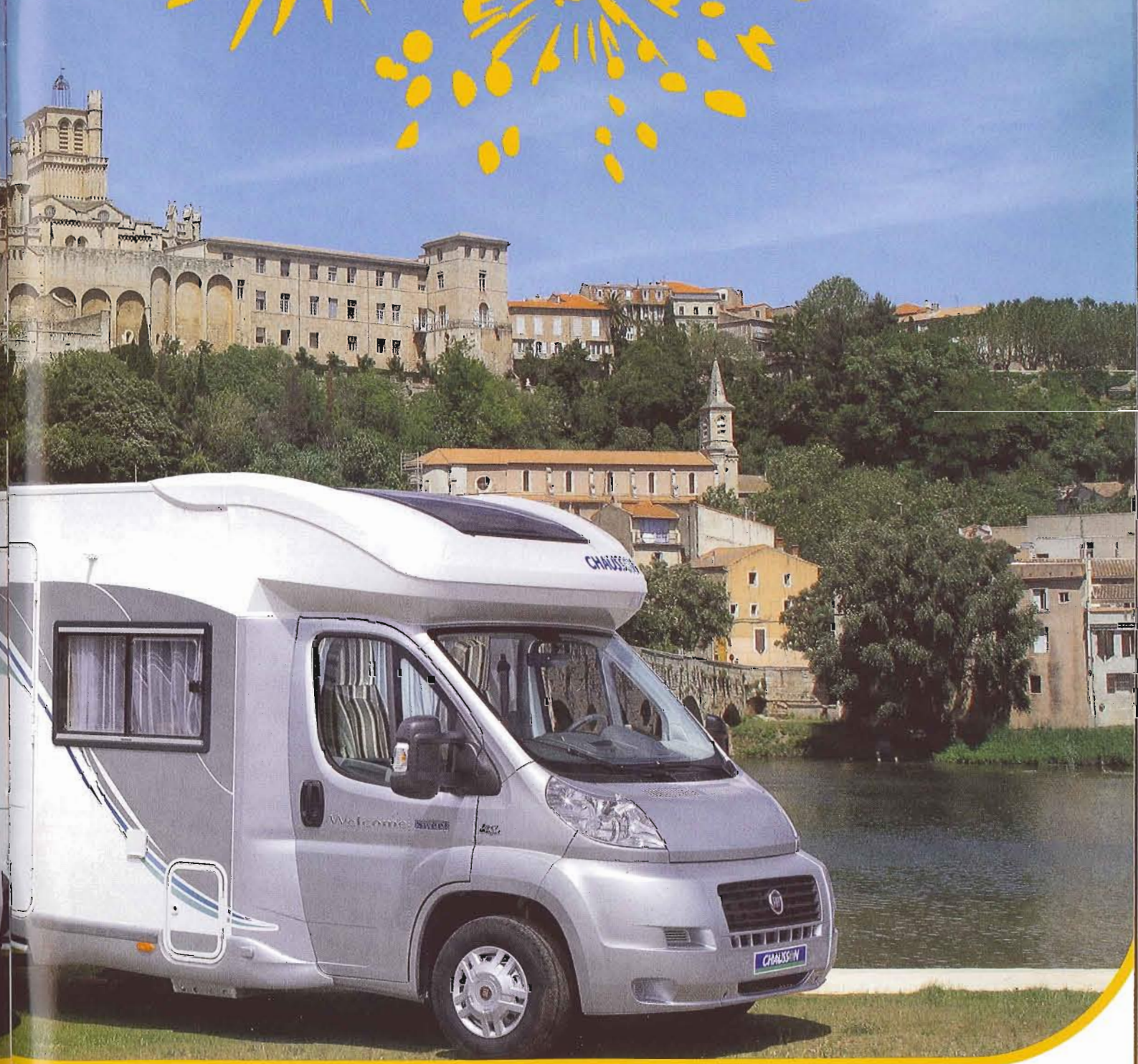


FLASH

- 1 • Wardrobe /linen cupboard. (1)
- 2 • Interior lighting. (1)
- 3 • Large over-cab sleeping berth with built-in spotlights and storage. (1)
- 4 • Modern, functional unit with ergonomic handle. (1)
- 5 • EASY BED system; manual adjustment of bed height (35cm. amplitude). (FLASH 04 / FLASH 01) (1)
- 6 • Large capacity fridge/freezer*. (1)
- 7 • Twin rear wheels on Ford cab chassis*, optimised load capacity and towed weight. (1)
- 8 • Shower stall with 80 x 80 cm base, rigid swing doors/ double-waste shower base (Flash S2). (1)
- 9 • Permanent sofa-bed (Flash S2). (1)
- 10 • Large rear garage across full width of the vehicle with 2 access doors*. (1)
- 11 • Ambient pulsed air heating using vehicle fuel or gas (usable when travelling)*. (1)

* Depending on the model, please refer to the technical insert in the centre of the catalogue
 (1) Country dependent / See features table.





Attractive and well equipped!

With the Welcome range, gone are the days of compromise: in overcabs or low profiles, design and a broad range of equipment are key, making your well-being the priority! And for its 30th anniversary, CHAUSSON has created the "Suite" event: a totally unique version of happiness in the world of motor homes ... Would you like to experience the pleasure of a new way of travelling? Welcome! (1)

Welcome 35, Welcome SUITE



Welcome WS, Welcome 72, Welcome 78

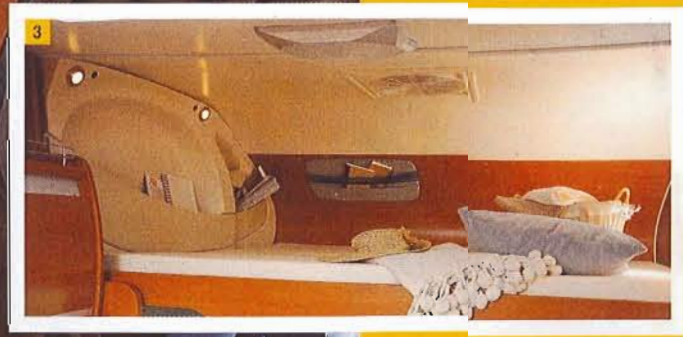
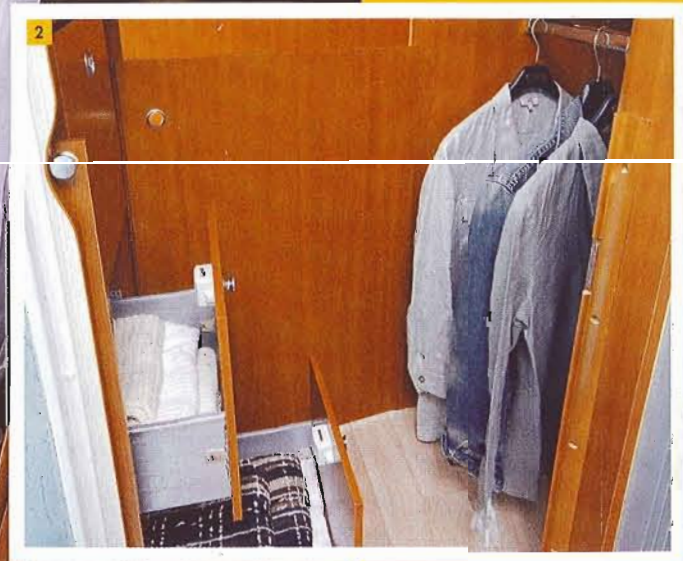
(1) Country dependent / See features table.



WELCOME

- 1 • Welcome 35 Galapagos interior. (1)
- 2 • Integrated walk-in wardrobe and bathroom with separate toilet (Welcome 35). (1)
- 3 • Large-size sleeping berth with storage and spotlights. (1)

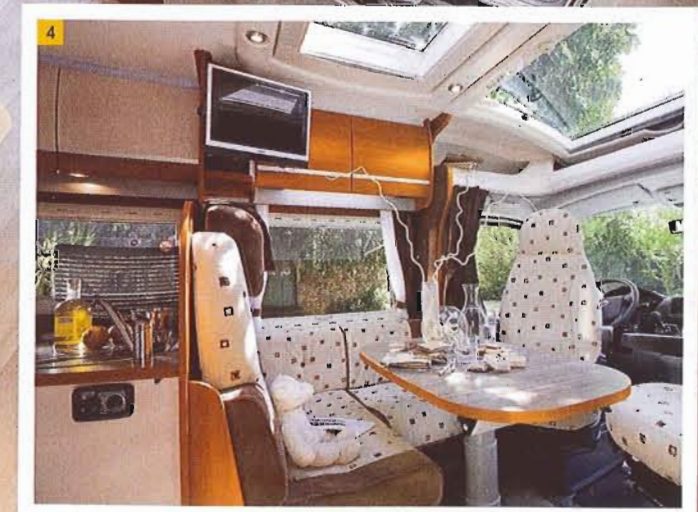
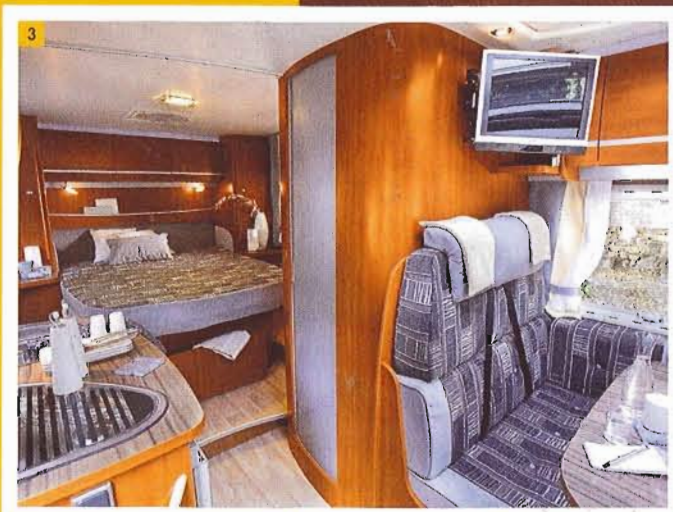
(1) Country dependent / See features table.



WELCOME

- 1 • Welcome SUITE
Andrea interior. (1)
- 2 • Welcome WS
Malibu interior. (1)
- 3 • Welcome 72
Moorea interior. (1)
- 4 • Welcome 78
Galapagos interior. (1)

(1) Country dependent /
See features table.

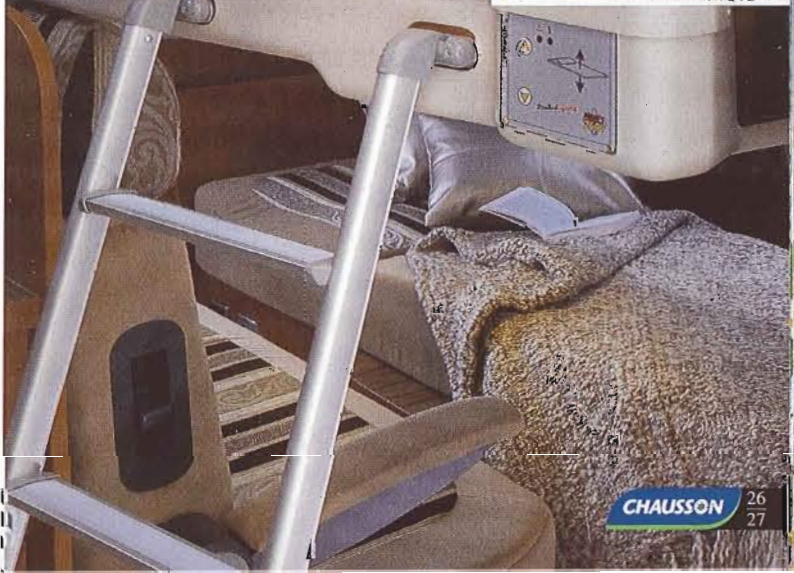





WELCOME

- 1 • Kitchen (SUITE). (1)
- 2 • Wardrobe/linen cupboard (SUITE). (1)
- 3 • Bottle storage (SUITE). (1)
- 4 • Shower stall with 80 x 80 cm shower base, rigid swing doors / double waste shower base (SUITE). (1)
- 5 • Storage locker with external access (SUITE). (1)
- 6 • Permanent electrically-operated lift-up bed (SUITE). (1)

(1) Country dependent / See features table.

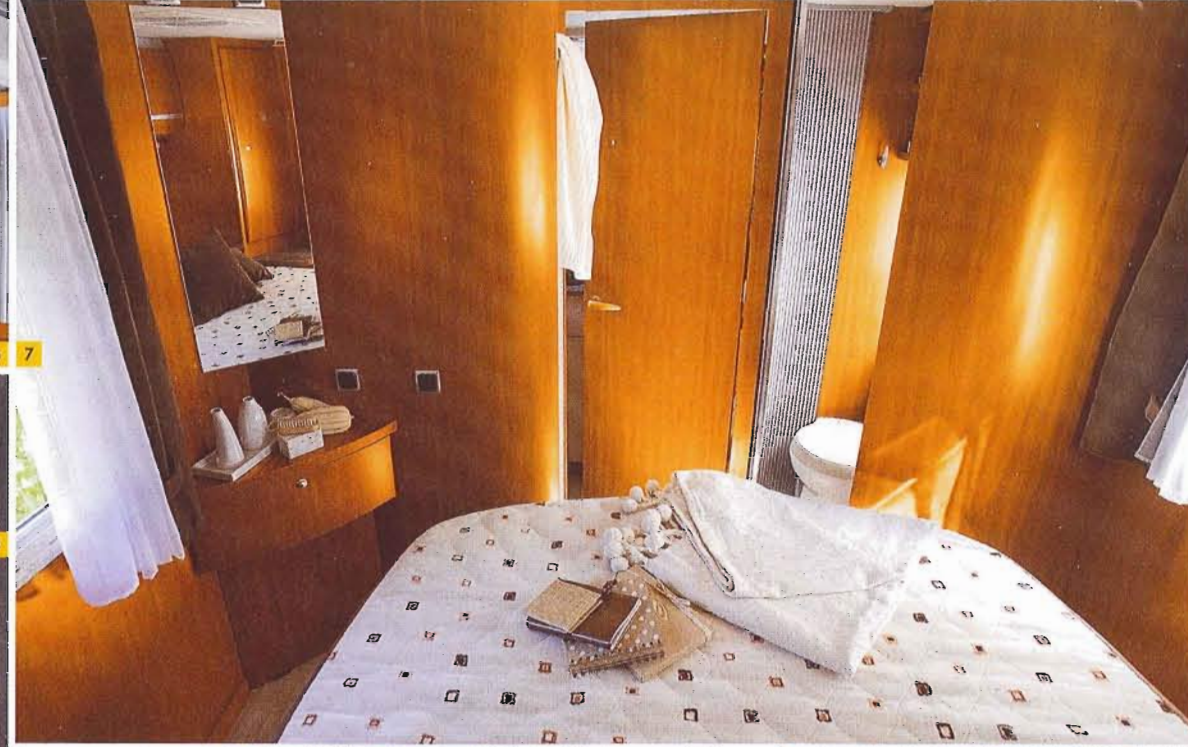




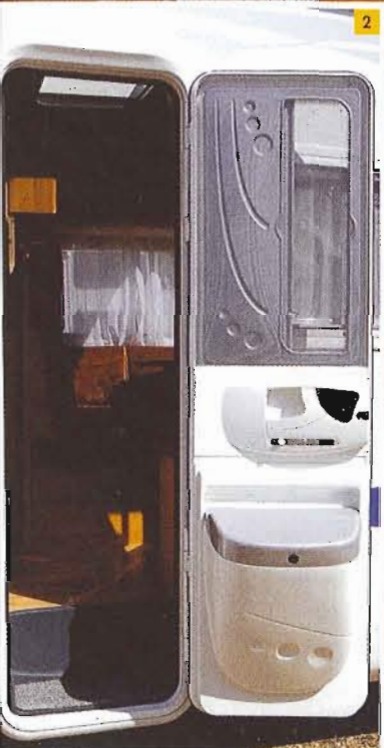
1



6 7



8



2



3 4



SYS
EM



9



EASY
BED

WELCOME

- 1 • Integrated panoramic skylight and sunroof.* (1)
- 2 • Living unit door with fly screen. (1)
- 3 • Large fridge/freezer*. (1)
- 4 • External access storage unit.* (1)
- 5 • EASY BED system: manual adjustment of bed height (35cm. amplitude). on vehicle with garage*/ optimisation of garage storage or maximum space on interior sleeping berth. (WELCOME WS) (1)
- 6 • Background lighting. (1)
- 7 • Rear central bed / Bathroom / separate toilet in Welcome 78. (1)
- 8 • Wardrobe / linen cupboard. (1)
- 9 • Electric table height adjustment / easy transformation into an extra bed.* (1)

* Depending on the model, please refer to the technical insert in the centre of the catalogue.

(1) Country dependent / See features table.



ALLEGRO



The ultimate, fortissim^o!

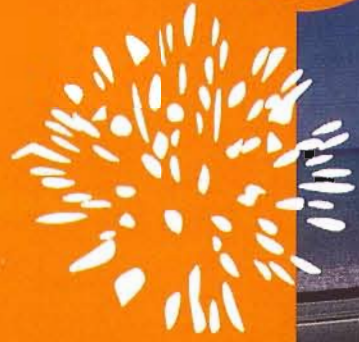
The must-have of the range! Acclaimed from its launch by the "Design Observatory", the Allegro offers a different vision of motor home travel, a real benchmark in the field of equipment, technology, style and interior design... Down to the very last detail, you will very quickly spot the difference between an Allegro and a traditional motor home. All the luxury of Allegro? Yes, but at a Chausson price! (1)



Allegro 94

Allegro 97

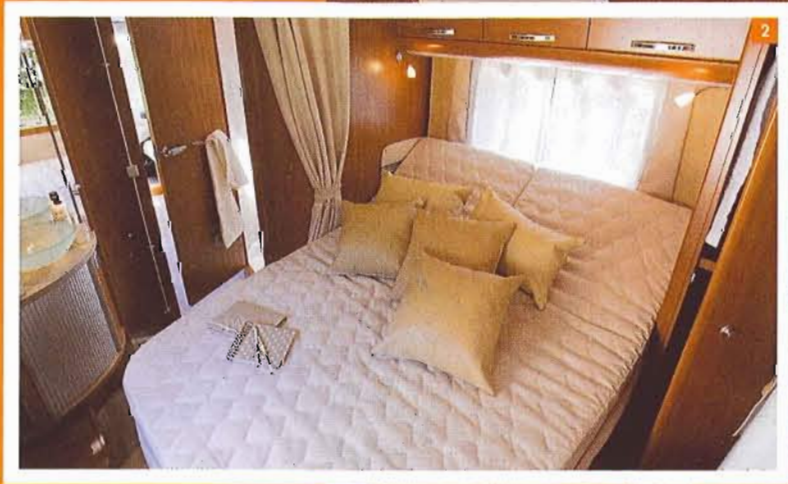
(1) Country dependent / See features table.



ALLEGRO

- 1/2 • Allegro 97
Eldorado interior. (1)
- 3 • Allegro 94
Andrea interior. (1)

(1) Country dependent / See features table.

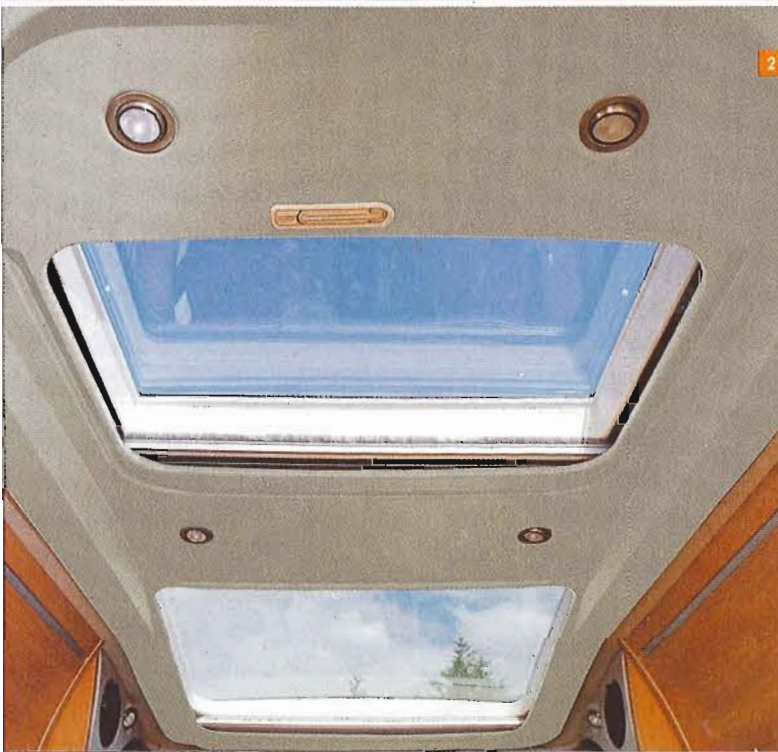
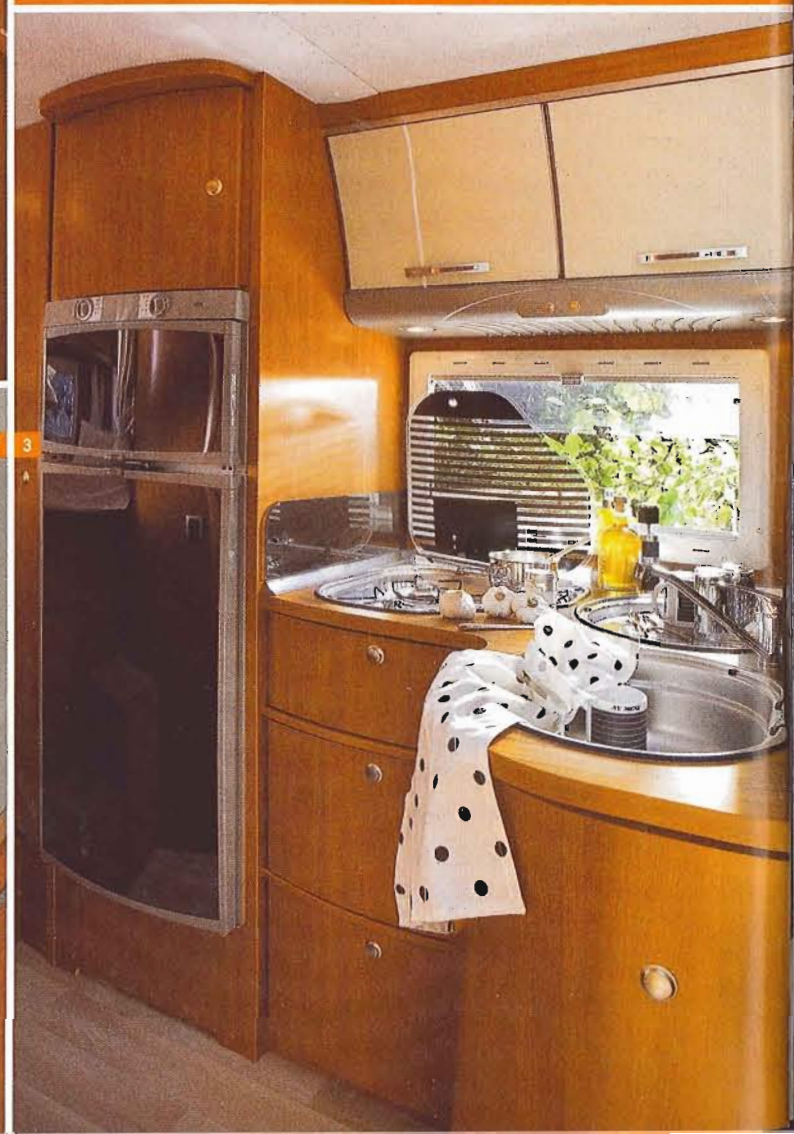
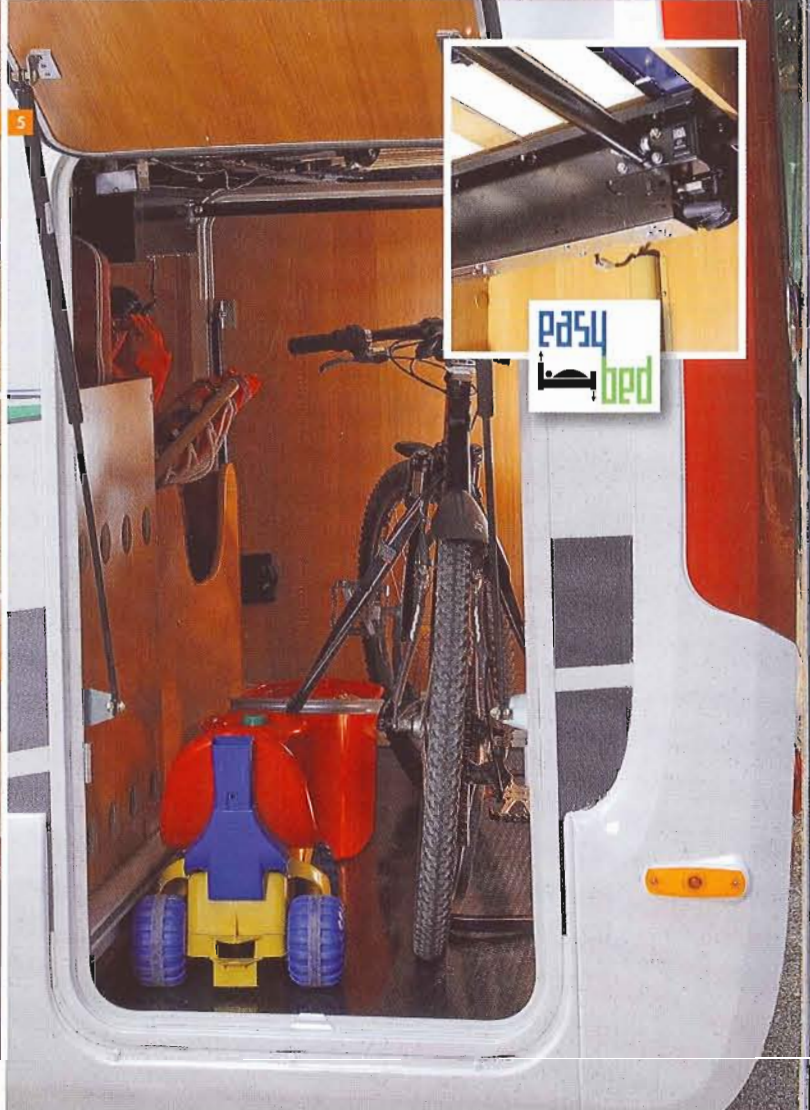




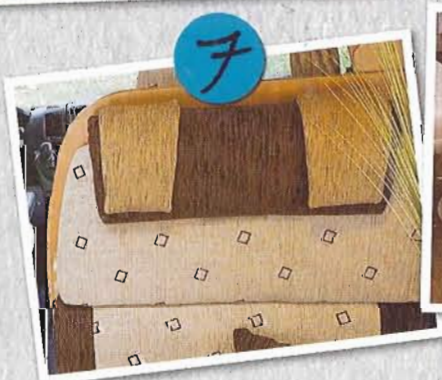
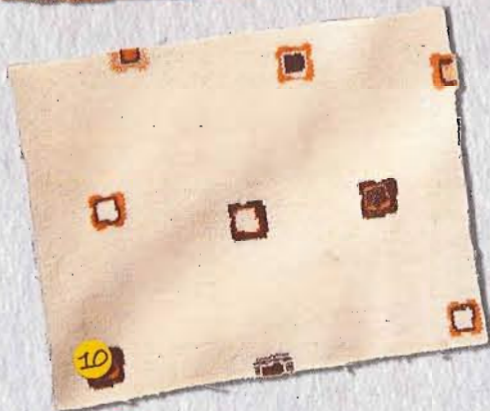
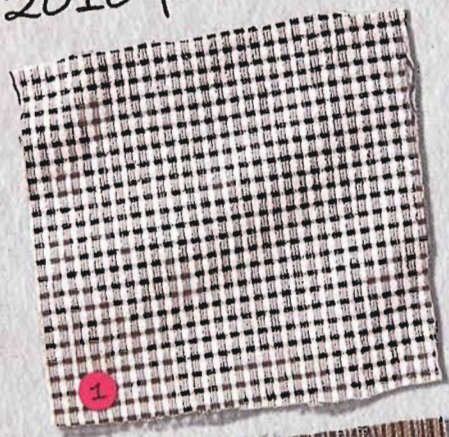
ALLEGRO

- 1 • 175L AES refrigerator*. (1)
- 2 • Front panoramic roof unit with double-glazed window and Remis skylight. Integrated light screening system. (1)
- 3 • ALLEGRO kitchen*. (1)
- 4 • Adjustable bed headboard and height-adjustable legs (Allegro). (1)
- 5 • EASY BED system: electric adjustment of bed height (35cm. amplitude). (Allegro 94). Optimisation of garage storage or maximum interior sleeping berth space. Door with lift mechanism. (1)

* Depending on the model, please refer to the technical insert in the centre of the catalogue.
(1) Country dependent / See features table.



2010 fabric collection: choose your interior!



Twist Interiors: (1)

- 1 Racing
- 2 Moka (option)
- 3 Terra-Cotta

Flash Interiors: (1)

- 4 Atlanta
- 5 Amadeus
- 6 Tahiti
- 7 Fidji

Welcome / Allegro Interiors: (1)

- 8 Eldorado (option)
- 9 Malibu
- 10 Galapagos
- 11 Moorea
- 12 Andrea

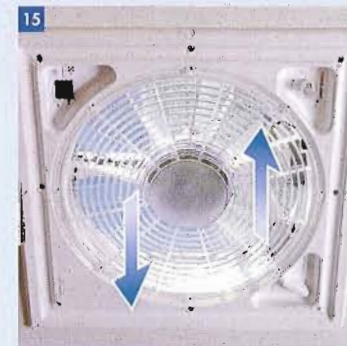
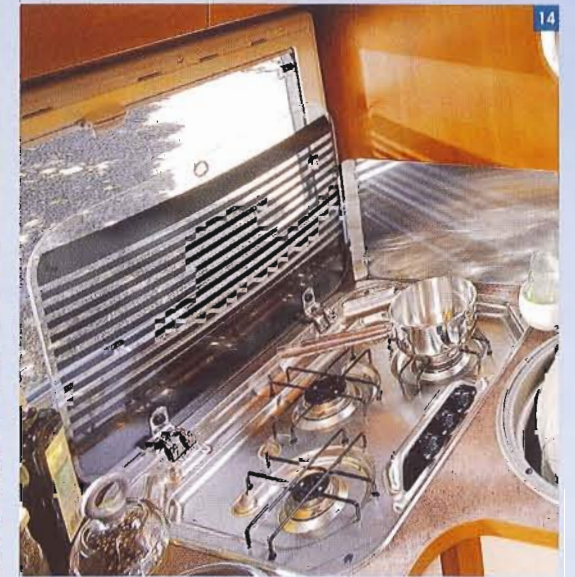
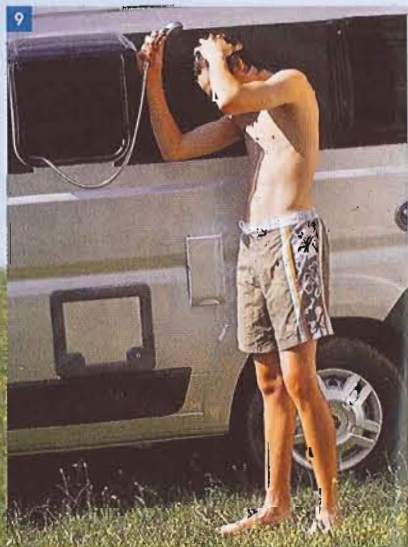
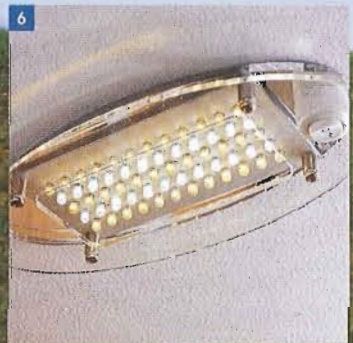
(1) Country dependent / See features table.



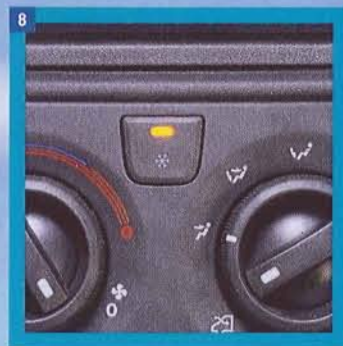
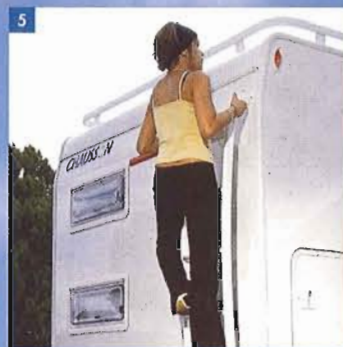
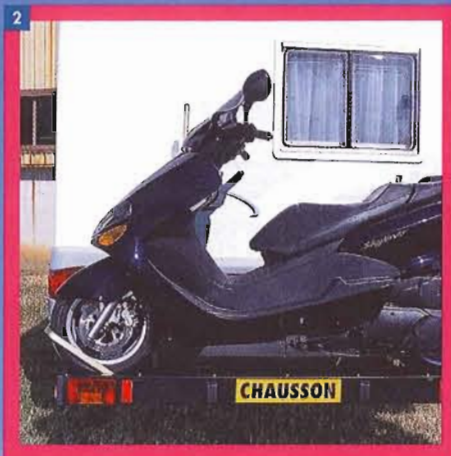
Enjoy every tiny detail:

- 1 • Removable seat covers (except Flash)*. (1)
- 2 • Panoramic skylight*. (1)
- 3 • Fix and go kit*. (1)
- 4 • Pre-wired TV point*. (1)
- 5 • Dining table usable outside (Twist only)*. (1)
- 6/7 • LED lighting (except Twist Active)*. (1)
- 8 • REMIS cab blind (except Twist Active / Option for Flash/Welcome/Allegro)*. (1)
- 9 • Exterior shower (Twist only)*. (1)
- 10 • Polyester coachwork (except Twist)*. (1)
- 11 • Seitz window. (except Twist)*. (1)
- 12 • Anchor clips for bike-rack (except Twist)*. (1)
- 13 • Slatted bed base*. (1)
- 14 • 3-ring hob (except Welcome WS, Suite, Twist). (1)
- 15 • 12V fan/extractor skylight (except Twist/Flash/Suite)*. (1)
- 16 • Over-the-cab hot air outlet (except Twist/Flash)*. (1)
- 17 • Vehicle fuel or gas combination based heating (on the road heating)* (1)
- 18 • Pull-rod drain valve*. (1)

* Depending on the model, please refer to the technical insert in the centre of the catalogue.
(1) Country dependent / See features table.



Chausson, the very best option



1/2 • Motorbike carrier/ hitch*. (1)

3 • Extra sleeping berth - dining table (except Twist)*. (1)

4 • Extra sleeping berth - cab*. (1)

5 • Roof rack ladder*. (1)

6 • Silver Pack (except Twist, Flash, Welcome 29 and Welcome 35)*. (1)

7 • Living unit carpet*. (1)

8 • Air conditioned cab*. (1)

9 • Oven (except Twist)*. (1)

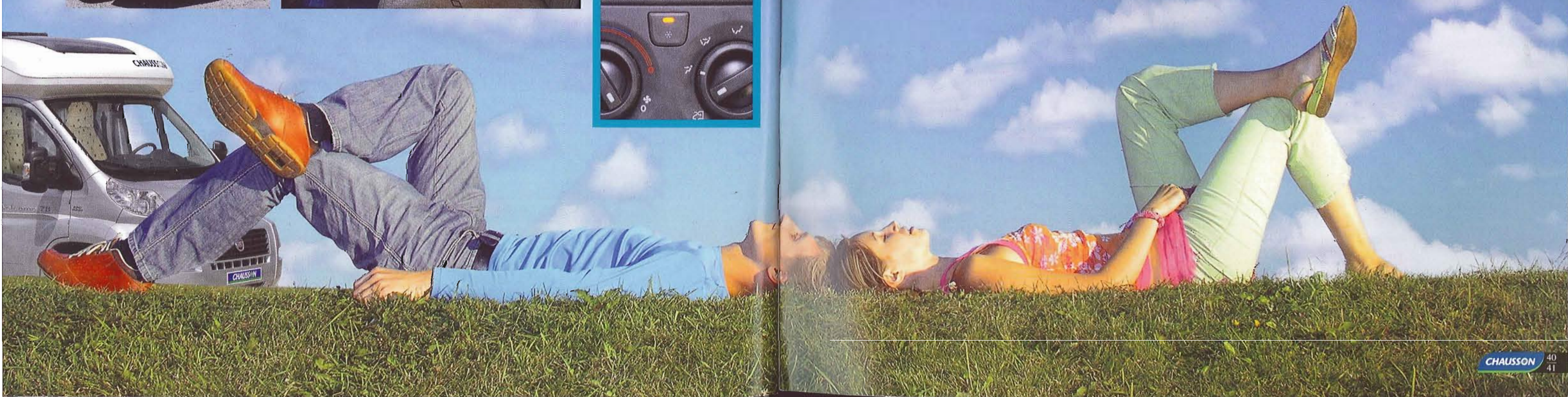
10 • 6EH Combi heater (except Twist)*. (1)

11 • Electric step*. (1)

12 • Rear corner steadies (except Twist)*. (1)

* Depending on the model, please refer to the technical insert in the centre of the catalogue.

(1) Country dependent / See features table.



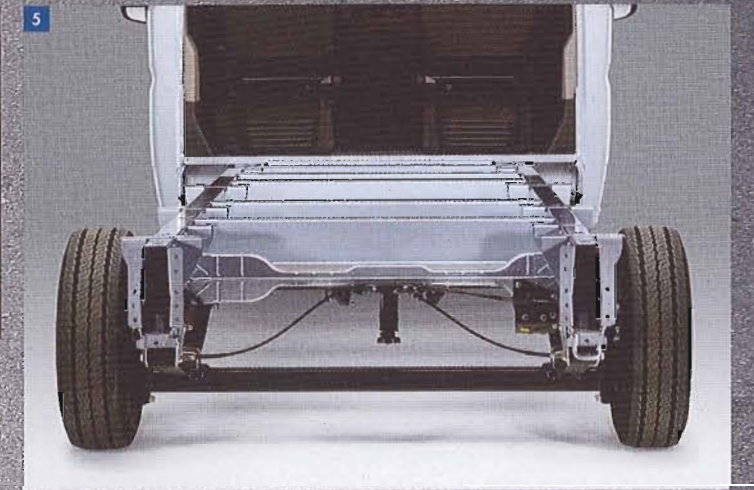
The choice of chassis is essential in the design of a camping car. Driving safety and comfort are a priority for CHAUSSON – hence the choice of FIAT and FORD as reference brands. Fully equipped with double airbags, extended rear track width (FIAT).



Welcome on board

FIAT

- 1 • Height-adjustable driver seats. (1)
- 2 • Power steering, double airbag, ABS, central cab door locking system. (1)
- 3 • Electronically adjustable, extra-wide external rear view mirrors with integrated radio aerial (except Twist). (1)
- 4 • Electric windows. (1)
- 5 • Extended rear track width: greater road holding, more space inside. (except Twist). (1)



FORD (Except Twist).

- 1 • Electric windows. (1)
- 2 • Electronically adjustable, extra-wide external rear view mirrors. (1)
- 3 • Height-adjustable seats for greater comfort. (1)
- 4 • Double airbag. Power steering. Onboard computer. Leather and brushed steel steering wheel. MP3 reader socket. (1)
- 5 • Gear lever on dashboard. (1)
- 6 • Cruise control. (1)
- 7 • Central, remote controlled cab door locking system. (1)

(1) Country dependent / See features table.



Your Chausson distributor



BP 109 - 07302 TOURNON CEDEX - FRANCE
Tel. (33) 04 75 07 55 00 - Fax (33) 04 75 07 55 58
Internet : www.chausson.tm.fr - E. mail : contact@chausson.tm.fr

Photos : Sébastien Sassoulas. All the technical characteristics (texts/photographs) for Chausson valid at the time of printing (August 2009) are provided for information only. They may be subject to modifications, often as a result of technical improvements. The certificate of approval (issued by the vehicles inspection authorities) meets legal requirements, in particular with respect to weights and dimensions.

GOOD IDEAS - UK MCS 8 038 502 538 01015
As Chausson is committed to protecting the environment, this issue is printed on PEFC certified paper from sustainably managed forestry.

