

2012 RANGE

the widest choice of layouts in the UK

xplore

avanté

odyssey

crusader



Elddis

Freedom
with Flair



NOW LIGHTER



**NEW
MODEL
EXCLUSIVE!**

see page 38 to find out more



Eddis

freedom
with flair



contents

Better built for leisure
Leading the way in lightweight quality
BPW technology

4 - 5
6
7

xplore 8 - 15

*Budget without
compromise and
now even lighter*



avanté 16 - 23

*Lightweight
quality from just
1090kgs MTPLM*



odyssey 24 - 31

*Classic
style for the
connoisseur*



crusader 32 - 39

*Redefining
luxury*



better built for leisure



YOUR ELDDIS CARAVAN IS EXPERTLY CRAFTSMAN-BUILT IN BRITAIN BY A TEAM DEDICATED TO YOUR TOTAL SATISFACTION.

Innovative at every level with class-leading specification and unique, useful features, every Eddis caravan combines enduring quality, lightweight luxury, our signature style and truly unbeatable value for money.

Eddis has it all ... and so much more!



Eddis

freedom
with Flair



***designed by
enthusiasts***

OUR AWARD-WINNING TOURING CARAVANS ARE THE RESULT OF OVER 40 YEARS' EXPERIENCE, EXPERTISE AND ENTHUSIASM.

Your feedback fuels our continuous improvement and investment, resulting in renowned caravans that are designed to make your Eddis experience extraordinary.

***signature style &
innovative ideas***

OUR DESIGNERS TRAVEL THE WORLD TO BRING YOU UNIQUE FIXTURES AND FITTINGS.

We ensure that your Eddis caravan reflects the very latest advances in design and technology, so you're guaranteed to stand out from the crowd.

leading the way in lightweight quality

WE'VE REDUCED WEIGHT ACROSS ALL OUR RANGES.

This opens up a whole world of choice. We already have the widest variety of layouts to choose from and by making our caravans even lighter to tow with just an average size family car, you no longer need to compromise on the perfect layout choice for your needs.

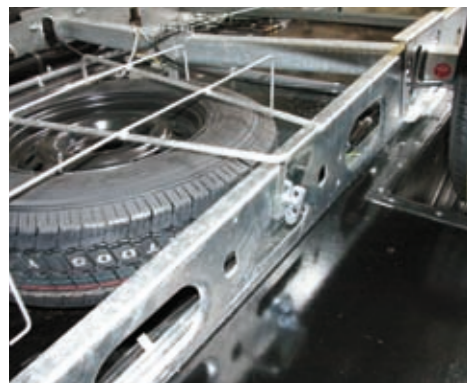
We've reduced weight using advanced materials technology, with no compromise on the high level of specification and unparalleled build quality synonymous with Elddis.

Our user payloads remain the largest in the industry.

NOW LIGHTER



Advanced material technology construction that increases rigidity whilst saving weight



GRP Underskin



Avante fully bonded roof construction



40mm thick domestic quality worktops use a unique sandwich construction method



BPW ✓

THE PREFERRED CHOICE OF
INDUSTRY EXPERTS.

"Hitching is quicker and easier"

"Superior ride quality"

"Outstanding stability control"

"All-round better driving comfort"

ONLY ELDDIS TOURING CARAVANS COME WITH WORLD-RENOWNED BPW TECHNOLOGY, DESIGNED FOR BETTER FUNCTIONALITY, GREATER SAFETY AND THE ULTIMATE TOWING EXPERIENCE.

- **Fast Coupling WS3000 Winterhoff Stabiliser***
With class-leading pitch and swing control; easy one-handed operation; greater towing performance – and no special towbar required
- **Swing Vtec Chassis***
For improved stability in all conditions and an improved towing experience
- **iDC Intelligent Drive Control***
Works like the electronic stability programme (ESP) in your car, detecting and eliminating any critical snaking of your caravan in unfavourable driving conditions. The ultimate in safety and stability
- **Endurance Tested**
On the toughest of Europe's test tracks, simulating 5 years of punishing usage, Elddis caravans remain safe, undamaged and still looking great

*Standard on all Elddis Crusader models and available as an option on Avante and Odyssey models



Visit www.elddis.co.uk/bpw-technology for more information on the BPW features and benefits found exclusively on Elddis caravans.

sure and steady with BPW

IN EXCLUSIVE PARTNERSHIP
WITH ELDDIS.



BPW FAHRZEUGTECHNIK

Our Spirit lets you rise.





New model Xplore 504 in standard 'Lois' upholstery

xplore

***budget without
compromise
and now even
lighter!***

Since its launch in 2008, the multi-award winning Elddis Xplore range has become synonymous with exceptional value for money. Unbelievably-affordable, this vibrant range makes owning a brand-new caravan an achievable dream.

We don't believe in cutting corners, so despite their very modest price tag, all Xplore touring caravans boast features and specification to put other 'budget' models to shame!

Highly innovative and exclusive Elddis layouts and feather-light weight mean you can tow a brand new Xplore with virtually *any* car.



Xplore 504 bathroom



Xplore 504 kitchen



Xplore 504 vanity unit with sink, mirror and nearby power point



Elddis
freedom
with flair



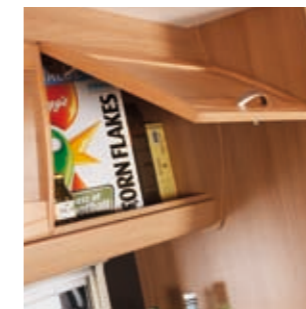
Xplore 405 shown with 'Lois' standard fabric. Inset: 'Estina' ① and 'Kento' Aquaclean® ② fabric options



Xplore 405 kitchen



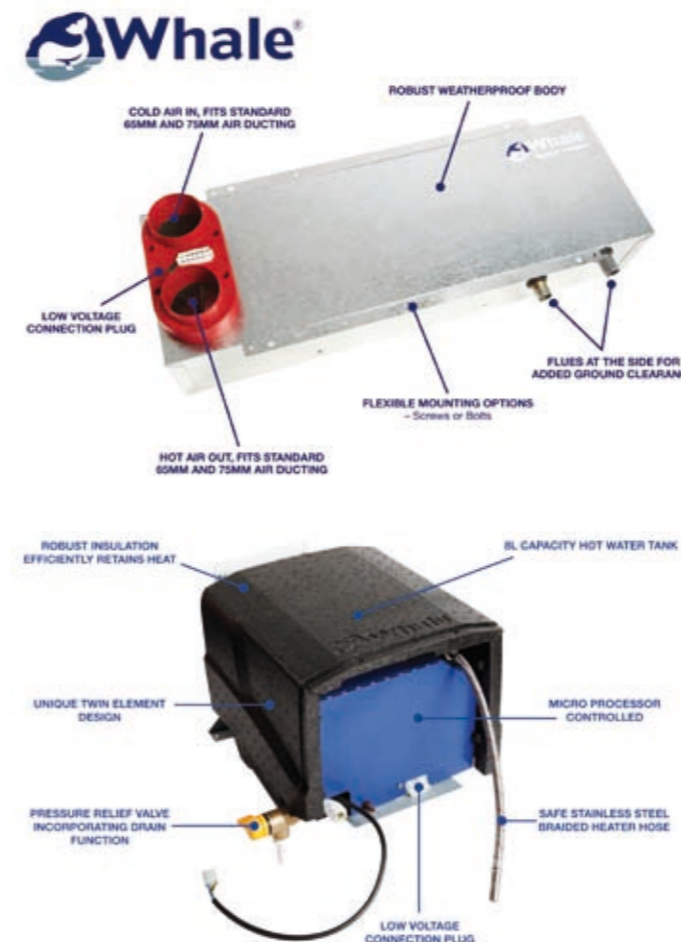
Stylish and practical fittings



Deep and spacious lockers

new for 2012

- Lighter weights across the range
- Easy to use space saving Whale underfloor heater, runs on gas or electric with quiet night-time setting
- Fresh exterior with white powder coating and new back panel
- GRP underskin to caravan floor providing a water resistant barrier
- Real hardwood 'Noce Prosecco' locker doors with positive locking on kitchen lockers
- The extremely successful 304 now has a rear dinette window
- Repositioned awning light above the door
- Improved rapid heat-up water system (Whale lightweight rapid water heater in 302 & 304)
- Alternative fabric option in 'Estina'
- Alternative Aquaclean® fabric option in 'Kento'
- High security lock
- Domestic style bathroom with privacy lock
- Removable 'Harvest Heathers' carpet
- Carbon Monoxide (CO) monitor



Whale Gas and Electric Underfloor Space Heater Discrete space saving design, high performance

The compact and lightweight Whale underfloor Space Heater comes packaged in a robust body built to withstand harsh external conditions and features superior insulation for high efficiency and low heat loss. It uses a lightweight blown air system which allows for powerful and rapid heat supply. It has been built with the customer in mind and fits discreetly underneath the vehicle, which leaves more storage and living space inside your caravan.

The space heater doesn't require an internal flue or roof mounted chimney and this therefore minimises the risk of potential heat loss from the vehicle. It is also a low voltage heater which runs on gas and electric and requires only 2kW gas or 2kW electric. The Whale Underfloor Space Heater is very easy to use and comes with a very practical control panel that allows you to choose between five variable settings including a gas setting, quiet/night time electric setting and frost protection setting.

* The Whale Gas and Electric Underfloor Space Heater is standard on all Xplore models and the Avante 372.

Whale Rapid Heat Water Heater Compact design, fast heat up time

The new Whale Rapid Heat Compact and Lightweight Water Heater is one of the smallest water heaters on the market, yet its unique twin element design offers a high performance setting for faster water heat up. The new 8 litre Whale Rapid Heat Water Heater allows you to have two long hot showers from a standing start in less than 25 minutes.

*The Whale Rapid Heat Water Heater is standard on the Xplore 302 & 304.



Xplore 405 bathroom



Xplore 405 bunk beds



Xplore 304



Xplore 504 reading light



Xplore 304 dinette



Xplore 405



Xplore 504 easy access under bed storage



Xplore 504 spacious wardrobe



Xplore 504 bathroom handle with privacy lock

choose an Xplore layout to suit your lifestyle

Xplore 302*
Single axle
2 berth
Interior length: 3200mm / 10'6"
Plated M.T.P.L.M: 930kgs / 18.26cwt

Unique & super lightweight - tow with almost any car



Xplore 304*
Single axle
4 berth
Interior length: 3800mm / 12'6"
Plated M.T.P.L.M: 1030kgs / 20.27cwt

Unique to Elddis - the best-selling ultra-light family caravan



All weights are pre-production estimates for guidance only - may be subject to change.

For 2012 models the method of calculating the MRO and payload figures has changed. Allowances for essential equipment (e.g gas cylinders) previously allowed for in the user payload are now within the MRO. The provision for a leisure battery has been included within the personal effects payload allowance.

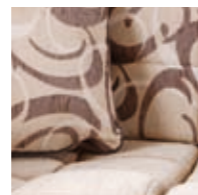
360° virtual tours on our website

Please refer to the accompanying guide for latest prices, options and full technical specifications. For more information on the Elddis Xplore range please visit www.elddis.co.uk

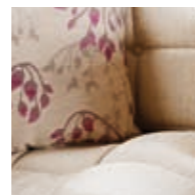
Personalising your Xplore caravan - Options for 2012 season

- Alternative 'Estina' fabric option
- Alternative Aquaclean® fabric option in 'Kento'. A unique molecular coating is applied to Aquaclean® fabrics ensuring that even the toughest stains can be removed easily!
- Xplore SE Pack:
 - Winterhoff stabiliser
 - Alloy wheels
 - Door flyscreen
 - Steel spare wheel and carrier

- Removable luxurious carpet in lieu of one piece runner
- Weight plate upgrade (FREE at point of order)
- Bespoke co-ordinating bed cover sets are available for your Xplore, visit www.elddis.co.uk/jonic
- A variety of full size and porch awnings are available to fit your Xplore, please ask your Elddis retailer for information and advice



'Estina' fabric option






'Kento' Aquaclean® fabric option

room

NOW LIGHTER*



comfort

-      GRADE III THERMAL INSULATION for guaranteed all weather comfort
- NEW space-saving Whale underfloor heating- runs on gas or electric with quiet night-time setting (now in all Xplore vans)
- High quality sprung upholstery
- Fully opening spring-assisted beech slat bases on all bunks and beds for easy access – great for bikes and pushchairs (506 only)
- Seat backrest ventilation boards
- Domestic style bedframe (504 only)
- Easy clean Seitz blinds and flyscreens to all windows
- Heki rooflight with pleated blind and separate flyscreen
- Double-glazed opening windows with night ventilation position

style

New exterior including:

- NEW white awning moulds and rubbing strakes
- NEW rear quarter panel and lights
- Full wheel trims with alloy wheel option (as part of SE Pack)
- Moulded GRP front panel with single panoramic opening window
- Exterior 2-part door with moulded interior liner, quick release retainer and inbuilt storage

Stylish interior including:

- Stylish interior design with co-ordinated luxurious 'Lois' soft furnishings
- Alternative 'Estina' fabric option
- Alternative Aquaclean® wipe clean 'Kento' fabric option
- 'Noce Prosecco' furniture in light oak finish
- Real hardwood ash locker doors
- Matt nickel finish handles (excluding bathroom door)
- Warm 'Cappuccino Stone' granite effect worktops and co-ordinating trim
- 'Chocolate' bamboo-effect easy clean heavy-duty vinyl flooring
- Removable luxurious 'Harvest Heathers' carpet runner
- 12V corner feature lighting
- Twin curtain track for improved hanging and ease of use

cook

- Positive locking on specific kitchen locker doors for extra safety
- Multi-level storage
- Deep storage cupboards
- Domestic style fridge with large storage capacity (115L)
- Full height domestic style cooker with spark ignition oven, grill and separate pan storage (Space-saving Spinflo oven in 302 & 304)
- Spinflo 3 burner hob with high speed multi-function burner, spark ignition and flame failure protection – including large burner for wok or large frying pan
- Durable hygienic and heat-resistant hob cover, providing additional kitchen work surface
- Stainless steel sink and removable drainer
- Polished chrome fittings and taps
- Anthracite splashbacks

practical

- NEW GRP underskin to caravan floor providing a water resistant barrier
- NEW window fitted in rear dinette in 304 model
- NEW repositioned awning light above door
- Stonechip resistant GRP front panel
- Exterior access battery box with mains electric inlet (battery not included)
- Fully protected mains electric system with up to five 230V sockets
- 12V control panel with battery status meter, awning light, 12V master, lighting and water pump switches
- Power-saving fluorescent ceiling lights in living and washroom areas
- Halogen adjustable downlights in lounge and sleeping areas
- Fluorescent lights in kitchen
- Class-leading BPW V-tec galvanised steel chassis, braking system, running gear and easy use handbrake
- Seat bases with space underneath for ample storage of larger, bulky items
- Inboard semi-rigid fresh water pipes
- Large bore under-slung rigid waste pipes with new offside outlet
- Large universal gas bottle storage
- A-Frame cover with plug tidies
- 13-pin 12V car connector
- 25 meter mains hook-up cable

wash

- NEW improved Truma rapid heat-up water system (Whale lightweight rapid water heater in 302 & 304)
- Whale Premium submersible pump with carbon filter for improved water flow to shower and sinks
- Wet locker access with external access to shower hose – great for hosing down after outdoor sports or washing muddy dog paws! (302 only)
- Domestic style washbasin
- Vanity storage unit and mirror
- Fully lined shower cubicle (504 only)
- Polished chrome fittings, mixer taps and separate shower taps
- Thetford electric flush toilet (Thetford manual flush in Xplore 302)
- Domestic style bathroom door with high quality privacy lock

security

- NEW Carbon Monoxide (CO) alarm
- High security locks to all external doors
- Smoke alarm
- Gas regulator for Propane and Butane mounted on front bulkhead
- Isolation taps for all gas appliances
- Entrance step and entrance mat
- CRiS identity number etched to windows and caravan chassis
- Concealed security data chip within caravan construction
- All models comply with British and European safety standards as independently verified by the National Caravan Council (NCC)

entertain

- TV bracket (selected models)
- Up to 2 TV points with dedicated 230V, 12V and coaxial aerial sockets
- Additional TV/media point and games storage unit with hidden cable tidy (506 only)
- Living room chest of drawers with occasional table (excluding 302 & 304)
- Free standing dining table with dedicated storage location
- L-Shape lounge with picture window (302 & 304 only)



avanté

**lightweight quality
from just
1090kgs MTPLM**

A range of cool and contemporary caravans, including layouts unique and exclusive to Elddis.

Using advanced materials technology, we've reduced weights significantly, meaning you can now tow a best-selling Avante 624 twin axle model with an average mid-size family car.

No corners have been cut to bring you the lighter Avante range. You'll still find the solid craftsmanship and exciting gadgets that make Elddis uniquely different by design.



New model Avante 566



Avante bathroom now with improved Truma rapid heat-up water system



Avante 372 kitchen



Avante 566 triple bunk beds



Elddis
freedom
with flair



Avante 372 shown with 'Estina' standard fabric. Inset: 'Figaro' ①, 'Linden' ② and 'Kento' Aquaclean® ③ fabric options



Avante LED kitchen lighting, shown here in the 566



Avante sink with removable draining board



Avante 566 kitchen

new for 2012

- Lighter weights across the range

All new stylish exterior including:

- Shaped windows with co-ordinating graphics
- Powder coated awning moulds

Lighter, fresher, interior including:

- Unique space-saving bathroom (646 & 372 only)
- Domestic style bathroom door with privacy lock
- Exclusive 'Easy Glide' bed technology for easy bed conversion
- High security locks
- Space saving Whale Underfloor Heater runs on gas or electric with quiet night-time setting (372 only)
- Improved kitchen lighting, including LED spotlights
- GRP underskin to caravan floor providing a water resistant barrier
- Improved rapid heat-up water system
- Standard 'Estina' upholstery and alternative fabric options in 'Figaro' or 'Linden'
- Alternative Aquaclean® fabric option in 'Kento'
- Removable 'Harvest Heathers' carpet
- Co-ordinating 'Profido Chiaro' worktops
- Carbon Monoxide (CO) monitor



Avante chopping board which fits neatly over sink creating more space



Class-leading 100% LED lighting



Contemporary craftsman-built worktop



New 'Easy Glide' bed technology



Avante 372 TV area



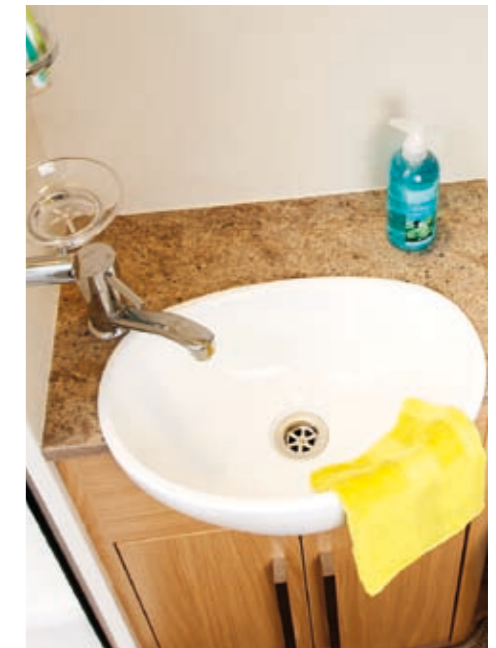
Plenty of practical storage solutions



Avante 566



Avante 372 space saving bathroom with slideout sink unit



Avante 566 bathroom sink and vanity unit



Avante 566 bathroom cabinet

choose an Avante layout to suit your lifestyle



room

NOW LIGHTER*



comfort



cook



wash

Avante 372
Single axle
2 berth
Interior length: 3733mm / 12'3"
Plated M.T.P.L.M: 1090kgs / 21.41cwt

NEW Model

Exclusive Layout



Avante 462*
Single axle
2 berth
Interior length: 4660mm / 15'3"
Plated M.T.P.L.M: 1240kgs / 24.36cwt



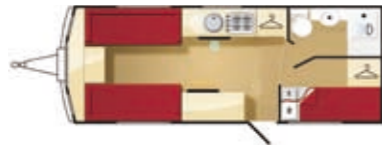
Avante 515*
Single axle
5 berth
Interior length: 5599mm / 18'4"
Plated M.T.P.L.M: 1470kgs / 28.88cwt



Avante 540*
Single axle
4 berth
Interior length: 5599mm / 18'4"
Plated M.T.P.L.M: 1412kgs / 27.73cwt



Avante 554*
Single axle
4 berth
Interior length: 5599mm / 18'4"
Plated M.T.P.L.M: 1395kgs / 27.40cwt



Avante 564*
Single axle
4 berth
Interior length: 5599mm / 18'4"
Plated M.T.P.L.M: 1415kgs / 27.79cwt



Avante 566
Single axle
6 berth
Interior length: 5599mm / 18'4"
Plated M.T.P.L.M: 1465kgs / 28.77cwt

NEW Model



Avante 574
Single axle
4 berth
Interior length: 5699mm / 18'8"
Plated M.T.P.L.M: 1435kgs / 28.19cwt

NEW Model



Avante 624*
Twin axle
4 berth
Interior length: 6150mm / 20'2"
Plated M.T.P.L.M: 1550kgs / 30.45cwt



Avante 646*
Twin axle
6 berth
Interior length: 6150mm / 20'2"
Plated M.T.P.L.M: 1650kgs / 32.41cwt



Please refer to the accompanying guide for latest prices, options and full technical specifications. For more information on the Eddis Avante range please visit www.elddis.co.uk

- GRADE III THERMAL INSULATION for guaranteed all weather comfort
- 6'4" fixed double beds
- 6'5" headroom
- NEW space-saving Whale underfloor heating- runs on gas or electric with quiet night-time setting (372 only) (see page 11 for more information)
- Class-leading quality sprung upholstery with curved seating
- Wide-opening spring-assisted beech slat bases on all bunks and beds for easy access
- Seat backrest ventilation boards
- Domestic bed frame and deep bed base with luxury mattress and co-ordinating luxury headboard for greater comfort (fixed bed models)
- Easy-lift fixed bed with gas struts for easy-access storage
- Improved comfort bunks and convertible beds
- Lower and central bunks lift easily for extra storage – great for bikes and pushchairs (566 & 646)
- Concealed room dividers in all family vans
- Heki tilting panoramic rooflight with pleated blind and separate flyscreen
- Double-glazed opening windows with night ventilation position
- Easy clean Seitz blinds and flyscreens to all windows
- Door flyscreen
- Truma Ultraheat dual fuel rapid blown air heating, including washroom (excluding 372)



style

All new exterior including:

- NEW stylish shaped Polyplastic windows
- NEW white awning rails
- NEW streamlined exterior graphics
- Repositioned awning light above door
- UK manufactured 'Vulcan' sports alloy wheels
- Exterior 2-part door with moulded interior liner, window, blind, flyscreen and wastebin

Stylish new interior including:

- Fresh new interior design with co-ordinated luxurious 'Estina' soft furnishings
- Alternative Aquaclean® wipe clean 'Kento' fabric option
- Alternative 'Figaro' or 'Linden' fabric choices
- Co-ordinating scatter cushions as standard
- Removable 'Harvest Heathers' luxurious loose fit carpet
- 'Chocolate' bamboo-effect easy clean heavy-duty vinyl flooring
- 'Noce Prosecco' flush-fit contemporary locker doors with brushed Aluminium handles with resistance door catches
- Contrasting flush-fit kitchen units in Ivory with feature glazing and positive locking doors
- Granite effect worktops, tabletops and co-ordinating trim
- Twin curtain track for improved hanging and ease of use

- Thetford oven with separate grill and pan storage cupboard
- 4 burner hob with durable smoked glass cover / additional worktop
- Vented, fitted 700W microwave with stainless steel finish and co-ordinating surround
- Electronic ignition, digital control 115L fridge with Anthracite door finish
- Spacious fridge-freezer (646 only)
- Round, stainless steel sink with anti-slip removable drainer and chopping board with dedicated storage
- Modern Anthracite kitchen splashback
- Improved LED kitchen lighting
- Kitchen rooflight
- Polished chrome fittings and taps
- Double electric socket in kitchen



practical

- NEW GRP underskin to caravan floor providing a water resistant barrier
- NEW and exclusive 'Easy Glide' bed technology for easy bed conversion
- NEW easy-access drop-down seat bases for bulky item storage
- NEW repositioned awning light above the door
- Microwave isolation switch
- Class-leading 100% LED interior lighting, saving up to 80% battery consumption and giving over 70% improved Lux readings, with even consistent lighting and longer life-span
- Class-leading overhead locker storage, some with removable shelves
- Class-leading BPW Swing V-tec chassis for improved towing stability
- BPW iDC (Intelligent Drive Control) anti-snaking device option
- Winterhoff WS3000 stabiliser
- Easy action handbrake
- ABS rear panel with streamline moulded rear light housing and LED high level brake light
- Fully protected mains electric system with up to six 230V sockets – more than any other caravan manufacturer
- 20 Amp switchmode charger / transformer
- 12V control panel with battery status meter and water pump switch
- 25 meter mains hook-up cable
- 13-pin 12V car connector
- Exterior access battery box with mains electric inlet (battery not included) and option for 230V socket
- Fixing points for rear mounted cycle 'Fiamma' universal carrier
- Moulded full height stonechip-resistant GRP front panel with three opening double glazed windows and gas locker door with two gas struts
- Up to 3 hanging rails in wardrobe
- 170° hinges for walk-in effect wardrobes
- Aluminium bunk ladders (selected models)
- A-Frame cover with plug tidies
- Large universal gas bottle storage
- Spare wheel (steel) and carrier
- Large bore under-slung rigid waste pipes with offside outlet
- Inboard semi-rigid fresh water pipes

- NEW unique space-saving bathroom (646 and 372 only)
- Fully lined shower cubicle (excluding 372 & 646)
- Domestic style bathroom door with high quality privacy lock
- NEW improved Truma rapid heat-up water system
- Whale Premium submersible pump with carbon filter for improved water flow to shower and sinks
- Bathroom sink with worktop-mounted chrome tap giving greater sink area and ease of use (selected models)
- Thetford electric flush toilet
- Domestic style shower screen
- Polished chrome fittings, mixer taps and separate shower taps
- Vanity areas with LED downlighting, shelves and dedicated sockets for hairdryer and appliances (540, 564 & 624)
- Illuminated vanity mirror in bathroom (selected models)
- Full length dressing mirror (selected models)
- Multi-positional rooflight in bathroom
- Domestic style bathroom cabinet in Ivory (selected models)
- Ducted heating and towel hanging in all bathrooms for fast clothes and towel drying



security

- NEW Carbon Monoxide (CO) alarm
- High security locks to all external doors
- Smoke alarm
- Gas regulator for Propane and Butane mounted on front bulkhead
- Isolation taps for gas appliances
- Entrance step and removable entrance mat with tray
- CRIS identity number etched to windows and caravan chassis
- Concealed security data chip within caravan construction
- All models comply with British and European safety standards as independently verified by the National Caravan Council (NCC)



entertain

- Dedicated TV brackets (selected models)
- Up to 2 TV points with dedicated 230V, 12V and coaxial aerial sockets
- Additional TV/media point and games storage unit with hidden cable tidy (excluding 372, 515 & 646)
- Status 530 directional TV aerial
- AM radio aerial
- CD radio tuner with iPod and mp3 connectivity and speakers
- Free standing dining table with dedicated storage location
- Front drawer chest with extending occasional table (except 372)
- Optional external gas barbecue point

All weights are pre-production estimates for guidance only - may be subject to change.

For 2012 models the method of calculating the MIRO and payload figures has changed. Allowances for essential equipment (e.g gas cylinders) previously allowed for in the user payload are now within the MIRO. The provision for a leisure battery has been included within the personal effects payload allowance.

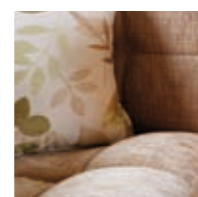
Personalising your Avante caravan - Options for 2012 season

- Alternative 'Figaro' or 'Linden' fabric options
- Alternative Aquaclean® fabric option in 'Kento'. A unique molecular coating is applied to Aquaclean® fabrics ensuring that even the toughest stains can be removed easily!
- Wraparound seating in lieu of front drawer chest unit with extending occasional table - exc. 372 (retailer fit). Customer also retains chest unit
- Omnivent with electronic multispeed in lieu of standard rooflight
- Alarm system with wireless PIR (Passive Infra Red) and corner steady leg sensors
- Coolmax® memory foam mattress in lieu of standard sprung mattress (540 & 624 only)
- 'Noce Prosecco' kitchen locker doors and microwave surround in lieu of standard white doors

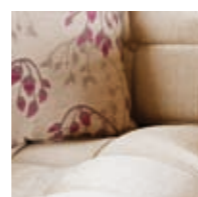
- 230V socket in battery for outside/awning use
- External gas barbecue point
- Robstop security device for use with Winterhoff stabiliser (retailer fit)
- BPW iDC (Intelligent Drive Control) anti-snaking device
- Weight plate upgrade (FREE at point of order)
- Bespoke co-ordinating bed cover sets are available for your Avante, visit www.elddis.co.uk/jonic
- A variety of full size and porch awnings are available to fit your Avante, please ask your Eddis retailer for information and advice



'Figaro' fabric option



'Linden' fabric option



'Kento' Aquaclean® fabric option



New model Odyssey 650, with fixed twin beds leading to luxurious end bathroom

odyssey

*classic style
for the
connoisseur*

For those who admire classic styling and the satisfaction of craftsman-built furniture, with real hardwood doors, the Odyssey is the touring caravan of choice.

This is streamlined sophistication, from the super-slick new exterior to the all-new interior - bright and airy, with a real sense of space.

Elegant detail and class-leading comfort provide a welcoming home-from-home.



Odyssey 650 bathroom

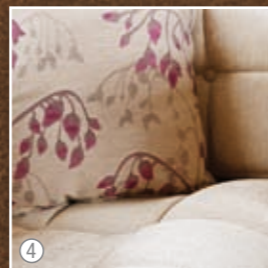
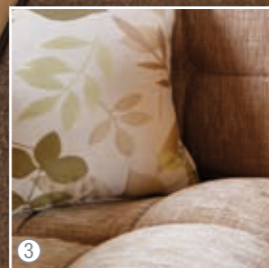


Odyssey 634 kitchen



Odyssey 650 bedroom





Odyssey 634 shown with optional 'Cardinal Mirage' leather upholstery. Inset: standard 'Figaro' ① fabric, 'Estina' ②, 'Linden' ③, 'Kento' Aquaclean® ④ fabric options



Odyssey dual fuel hob



The Odyssey cocktail cabinet is a decadent touch



LED directional downlighting in kitchen



Class-leading worktops manufactured in the Elddis factory

new for 2012

- Lighter weights across the range

All-new stylish exterior for the 2012 season including:

- Powder coated awning moulds
- Silver hitch cover and skirts

Lighter, fresher, interior including:

- Exclusive 'Easy Glide' bed technology for easy bed conversion
- Improved bathroom storage cabinets
- Improved kitchen lighting
- Cocktail cabinet
- High security locks
- TV brackets fitted (model specific)
- Improved rapid heat-up system
- GRP underskin to caravan floor providing water resistant barrier
- Standard 'Figaro' upholstery and alternative fabric options in 'Estina' and 'Linden'
- Alternative 'Cardinal Mirage' leather option with 'Linden' accessories
- Alternative Aquaclean® fabric option in 'Kento'
- Removable 'Everest Twist' carpet
- Co-ordinating 'Profido Chiaro' worktops
- 'Noce Prosecco' locker doors
- Carbon Monoxide (CO) monitor



The Odyssey 656 has wraparound seating as standard



Odyssey 634 multi-positional TV bracket



New 'Easy Glide' bed technology



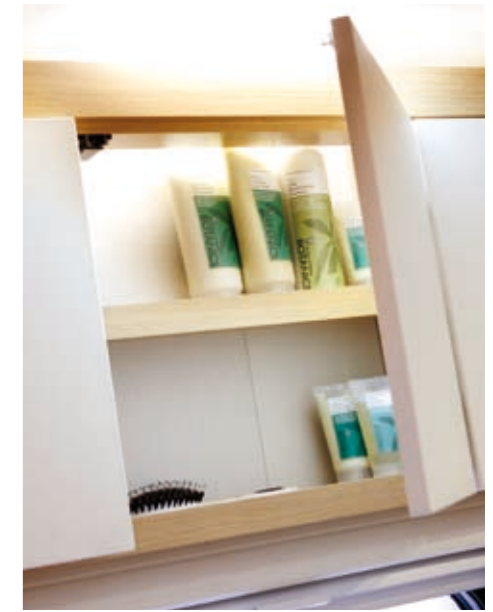
Luxurious, loose-fit 'Everest Twist' carpet



Odyssey 650 handle with privacy lock



Odyssey 634 shown with optional leather upholstery and with chest console and extending table - or choose wraparound seating and retain the chest of drawers to use as required (exc 656)



Odyssey bathroom cabinets are craftsman-built



Style & space in abundance in the Odyssey 634 bathroom



Vanity unit with storage, lighting & power point

choose an Odyssey layout to suit your lifestyle

Odyssey 540*
Single axle
4 berth
Interior length: 5599mm / 18'4"
Plated M.T.P.L.M: 1470kgs / 29.26cwt



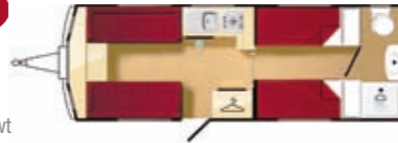
Odyssey 634*
Twin axle
4 berth
Interior length: 6240mm / 20'6"
Plated M.T.P.L.M: 1650kgs / 32.41cwt

**Improved
Layout**



Odyssey 650
Twin axle
4 berth
Interior length: 6240mm / 20'6"
Plated M.T.P.L.M: 1630kgs / 32.02cwt

**NEW
Model**



Odyssey 656*
Twin axle
6 berth
Interior length: 6240mm / 20'6"
Plated M.T.P.L.M: 1680kgs / 33.00cwt



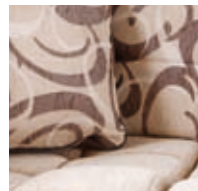
All weights are pre-production estimates for guidance only - may be subject to change.

For 2012 models the method of calculating the MIRO and payload figures has changed. Allowances for essential equipment (e.g gas cylinders) previously allowed for in the user payload are now within the MIRO. The provision for a leisure battery has been included within the personal effects payload allowance.

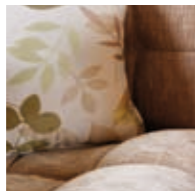
Personalising your Odyssey caravan - Options for 2012 season

- Alternative 'Estina' or 'Linden' fabric choices
- Alternative Aquaclean® fabric option in 'Kento'. A unique molecular coating is applied to Aquaclean® fabrics ensuring that even the toughest stains can be removed easily!
- 'Cardinal Mirage' leather upholstery with 'Linden' accessories
- Wraparound seating in lieu of front drawer chest unit with extending occasional table (retailer fit). Customer also retains chest unit (except 656)
- Entertainment pack (Avtex 7-way TV with integrated DVD player, satellite connection and solar panel connectivity)

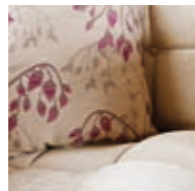
- BPW iDC (Intelligent Drive Control) anti-snaking device
- Robstop security device for use with Winterhoff stabiliser (retailer fit)
- Weight plate upgrade (FREE at point of order)
- Bespoke co-ordinating bed cover sets are available for your Odyssey, visit www.elddis.co.uk/jonic
- A variety of full size and porch awnings are available to fit your Odyssey, please ask your Elddis retailer for information and advice



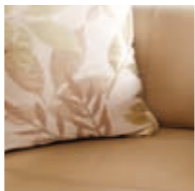
'Estina'
fabric
option



'Linden'
fabric
option



'Kento'
Aquaclean®
fabric
option



'Cardinal
Mirage'
leather
option

room

NOW LIGHTER*



comfort

- **GRADE III THERMAL INSULATION** for guaranteed all weather comfort
- Wide-opening spring-assisted beech slat bases on all bunks and beds for easy access
- Quality sprung upholstery
- Domestic style bed frame with deep oak-effect bed base
- Deep memory foam mattress with Coolmax® technology (fixed bed models)
- Co-ordinating headboard for greater style and comfort (fixed bed models)
- Easy-lift fixed bed with gas struts for easy-access storage
- Improved comfort bunks and convertible beds
- Seat bases with front access and space for bulky items
- Seat backrest ventilation boards
- Removable 'Everest Twist' luxurious loose fit carpet
- 'Chocolate' bamboo-effect easy clean heavy-duty vinyl flooring
- 7'6" overall width
- Heki Deluxe large tilting panoramic rooflight with pleated blind and separate flyscreen
- Double-glazed opening windows with night ventilation position
- Easy clean Seitz blinds and flyscreens to all windows
- Truma Ultraheat dual fuel rapid blown air heating (including washroom)
- Awning warmer

style

New modern exterior including:

- NEW white awning moulds and rubbing strakes
- NEW silver hitch cover
- NEW silver wheel arches
- NEW silver skirts
- NEW exterior graphics
- UK manufactured 'Vulcan' sports alloy wheels
- Exterior 2-part door with interior moulded liner, window, blind and waste bin

New brighter, fresher interior design including:

- Fresh new interior design with co-ordinating luxurious 'Figaro' soft furnishings
- Alternative 'Estina' or 'Linden' fabric options
- Alternative Aquaclean® wipe clean 'Kento' fabric option
- Alternative 'Cardinal Mirage' leather option with 'Linden' accessories
- Co-ordinating scatter cushions plus bolsters as standard
- Twin curtain track for improved hanging and ease of use
- Granite effect worktops with deep hardwood Ash trim
- 'Noce Prosecco' locker doors with brushed Aluminium handles with resistance door catches
- Mostly LED lighting throughout, including kitchen lighting and directional reading lamps, plus LED rooflights and ambient downlighting

cook

- Domestic style Spinflo Midi Prima oven with 2 shelves and electronic ignition with pan storage below
- Dual fuel hob with 800W electric hotplate and 3 gas burners with durable smoked glass cover/additional worktop
- Vented, fitted 700W microwave with stainless steel finish and co-ordinating surround
- Electronic ignition, digital control 115L fridge with Anthracite door finish and LCD display
- Stainless steel sink with integral drainer for easy cleaning
- Polished chrome fittings and taps
- Modern Anthracite kitchen splashback
- Omnivent extraction unit in kitchen
- Double electric socket in kitchen
- External gas barbecue point

practical

- NEW GRP underskin to caravan floor providing a water resistant barrier
- NEW and exclusive 'Easy Glide' bed technology for easy bed conversion
- NEW easy-access drop-down seat bases for bulky item storage
- NEW repositioned awning light above the door
- Microwave isolation switch
- Class-leading BPW Swing V-tec chassis for improved towing stability
- Wide-opening seat bases with space underneath for ample storage of larger items
- Large underbed access locker
- Power-saving improved LED lighting
- BPW iDC (Intelligent Drive Control) anti-snaking device option
- Winterhoff WS3000 stabiliser
- Moulded full height stonechip-resistant GRP front panel with three double glazed opening windows and gas locker door with gas strut
- Full height stylish rear panel with LED high level brake light, twin reversing and fog lights
- Additional exterior access locker door (excluding 656)
- Entrance step and removable entrance mat with tray
- Exterior access battery box with mains electric inlet (battery not included) with separate 230V socket
- 12V control panel with battery status meter, master 12V switch and water pump switch
- 20 Amp switchmode charger / transformer
- 25 meter mains hook-up cable
- 13-pin 12V car connector
- A-Frame cover with plug ties
- Large universal gas bottle storage
- Spare wheel (steel) and underslung carrier
- Easy action handbrake
- Fixing points for rear mounted cycle 'Fiamma' universal carrier
- Shock absorbers as standard
- Large bore under-slung rigid waste pipes with offside outlet
- Inboard semi-rigid fresh water pipes

wash

- NEW improved bathroom storage cabinets
- NEW and improved Truma rapid heat-up water system
- Premium Whale inline water filter and submersible pump with carbon filter for improved water flow to shower and sinks
- Truma Ultrastore water heater
- Truma Ultraheat ducted heating with towel hanging in all bathrooms for fast clothes and towel drying
- Bathroom sink with worktop-mounted chrome tap giving greater sink volume and ease of use
- Polished chrome fittings, mixer taps and separate shower taps
- Fully lined shower cubicle
- Luxury class-leading, award-winning 'Rimini' double shower cubicle (634 only)
- Thetford electric flush toilet
- Vanity areas with LED downlighting, shelves and dedicated sockets for hairdryer and appliances (excluding 650)
- Illuminated vanity mirror in bathroom
- Full length dressing mirror (selected models)
- Domestic style bathroom door with high quality privacy lock
- Multi-positional rooflight in bathroom

security

- NEW Carbon Monoxide (CO) alarm
- High security locks to all external doors
- Smoke alarm
- PIR (Passive Infra Red) and tilt-sensor alarm system
- Gas regulator for Propane and Butane mounted on front bulkhead
- Isolation taps for gas appliances
- Concealed security data chip within caravan construction
- CRiS identity number etched to windows and caravan chassis
- High security entrance locks to all external doors
- All models comply with British and European safety standards as independently verified by the National Caravan Council (NCC)

entertain

- NEW TV brackets fitted (634, 656 & 650 only)
- Up to 3 TV points with dedicated 230V, 12V and coaxial aerial sockets
- Status 530 directional TV aerial
- AM radio aerial
- CD radio tuner with iPod and mp3 connectivity and speakers
- Up to six 230V sockets
- Free standing dining table with dedicated storage location
- Cocktail cabinet

crusader

—
**Redefining
luxury**
—

Class-leading in every way, the Crusader is pioneering in both style and substance.

Only with Crusader will you find this ground-breaking level of quality and attention to detail, inside and out. The Crusader is bursting with top-of-the-range specification, yet still boasts unrivalled storage space – all in a new lighter weight, easy-to-tow range.

The all-new Crusader sets the new standard for luxury touring.



All Crusaders now have 6'5" headroom (shown here the all-new Crusader Shamal)



Crusader bathroom with Alde programmable water heating (Shamal shown here)



Crusader Cyclone kitchen



Crusader Cyclone bedroom shown with optional Aquaclean® fabric in 'Kento'



Crusader Cyclone shown with alternative Aquaclean® fabric option in 'Kento'. Inset: standard 'Linden', ① 'Estina', ② 'Figaro' ③ fabric and 'Cardinal Mirage' ④ alternative leather options



A home for everything with plentiful storage with additional worktop extension



New lower microwave positions (selected models)

new for 2012

- Lighter weights across the range
- All Crusader models now have European Whole Vehicle Type Approval
- All-new stylish exterior also includes 1 piece aluminium sides chrome effect stylish grab handles
- Wider exterior door with large LED awning light above the door with drip deflector
- Floor construction 46mm deep with waterproof GRP outer skin
- High security locks to all doors
- A-Frame cover with 'step-on' feature
- Rain deflector above front window
- Class-leading wider acrylic gas locker with dual gas struts and improved access
- Class-leading 100% LED concealed interior lighting, saving up to 80% battery consumption and giving over 70% improved LUX readings, even with consistent lighting
- Avtex 7-way TV with inbuilt Freeview and integrated DVD player
- Interior height 6'5"
- Domestic style shower cubicle (with LED concealed lighting on selected models) (selected models)
- 195L fridge-freezer with removable freezer unit for more space (selected models)
- Exclusive 'Easy Glide' bed technology for easy bed conversion
- Class-leading cabinetry and craftsmanship with 24mm locker construction
- Easy to use electrical sockets on front window shelf (with USB charger)
- Stylish overhead locker doors with class-leading storage and positive locking
- Illuminated cocktail cabinet with wine bottle storage
- Class-leading 4 drawer chest unit with pull-out table top extension
- 'Linden' upholstery with alternative 'Estina' & 'Figaro' fabric options
- 'Cardinal Mirage' leather option, with 'Linden' accessories
- Alternative Aquaclean® fabric option in 'Kento'
- 'Profido Chiaro' worktop
- 'Everest Twist' removable carpet
- Carbon Monoxide (CO) monitor
- Quick release TV brackets (up to 2 brackets in every caravan)
- Designer 'Night Sky' granite effect bathroom vanity basin



Exclusive Crusader granite-effect sink with co-ordinating drainer / sink cover



Crusader fridge with removable freezer compartment



The new front panel angle and increased headroom means even greater locker capacity



Crusader LED awning light



Quick release TV brackets

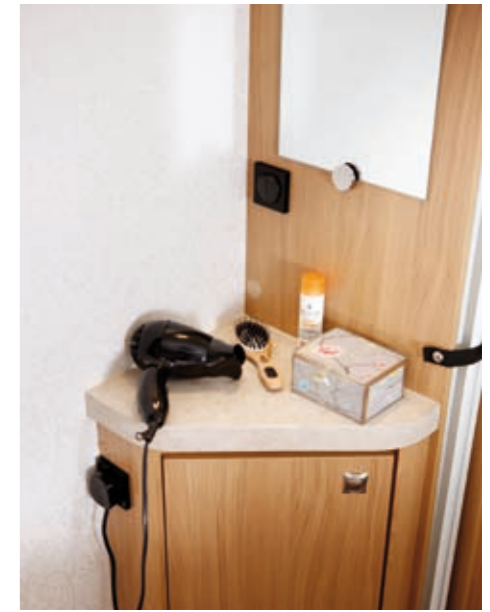


Crusader class-leading drawer console now with four spacious drawers and extending table



Choose optional wraparound seating and two drawers beneath

(shown here with full-size dining table in the Supersirocco)



Cyclone vanity unit with ample storage and power point



Crusader Supersirocco with multi-award winning bathroom



New Shamal bathroom sink in 'Night Sky' granite-effect

choose a Crusader layout to suit your lifestyle

Hurricane
Single axle
2 berth
Interior length: 4450mm / 14'7"
Plated M.T.P.L.M: 1335kgs / 26.22cwt


NEW Model

Only 1335 kgs MTPLM




Shamal
Single axle
4 berth
Interior length: 5800mm / 19'
Plated M.T.P.L.M: 1650kgs / 32.41cwt

NEW Model



Supersirocco*
Twin axle
4 berth
Interior length: 6340mm / 20'10"
Plated M.T.P.L.M: 1780kgs / 34.96cwt

Improved Layout



360° virtual tours on our website

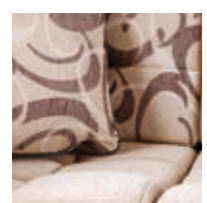
All weights are pre-production estimates for guidance only - may be subject to change.

For 2012 models the method of calculating the MIRO and payload figures has changed. Allowances for essential equipment (e.g gas cylinders) previously allowed for in the user payload are now within the MIRO. The provision for a leisure battery has been included within the personal effects payload allowance.

Please refer to the accompanying guide for latest prices, options and full technical specifications. For more information on the Elddis Crusader range please visit www.elddis.co.uk

Personalising your Crusader caravan - Options for 2012 season

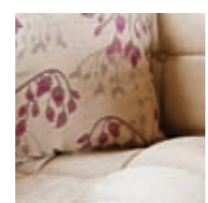
- Alternative 'Estina' or 'Figaro' fabric options
- Alternative Aquaclean® fabric option in 'Kento'. A unique molecular coating is applied to Aquaclean® fabrics ensuring that even the toughest stains can be removed easily!
- 'Cardinal Mirage' leather upholstery with 'Linden' accessories (fixed bed models only)
- Wraparound seating in lieu of front drawer chest unit with extending occasional table (retailer fit). Customer also retains chest unit
- Air conditioning (retailer fit)
- Clear windows in lieu of black privacy windows
- Self-seeking satellite dish
- Telemetry link to control Alde control heating via text message



'Estina' fabric option



'Figaro' fabric option



'Kento' Aquaclean® fabric option



'Cardinal Mirage' leather option

- 3 burner gas hob in lieu of dual fuel unit
- 40L onboard water tank, including Wastemaster (retailer fit)
- Suretrack anti-theft tracker system
- Robstop security device for use with Winterhoff stabiliser (retailer fit)
- 1 Diamond standard wheel lock (Hurricane and Shamal only)
- 2 Diamond standard wheel locks (exc. Hurricane and Shamal)
- Weight plate upgrade (FREE at point of order)
- Bespoke co-ordinating bed cover sets are available for your Crusader, visit www.elddis.co.uk/jonic
- A variety of full size and porch awnings are available to fit your Crusader, please ask your Elddis retailer for information and advice


room

NOW LIGHTER*



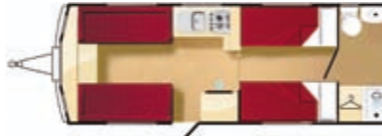
Cyclone*
Twin axle
4 berth
Interior length: 6340mm / 20'10"
Plated M.T.P.L.M: 1735kgs / 34.08cwt

Improved Layout



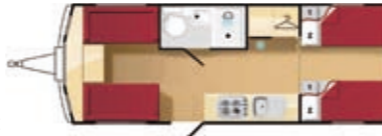
Supercyclone*
Twin axle
4 berth
Interior length: 6340mm / 20'10"
Plated M.T.P.L.M: 1790kgs / 35.16cwt

Improved Layout




Superstorm*
Twin axle
6 berth
Interior length: 6340mm / 20'10"
Plated M.T.P.L.M: 1870kgs / 36.73cwt

Improved Layout



Tempest*
Twin axle
6 berth
Interior length: 6340mm / 20'10"
Plated M.T.P.L.M: 1820kgs / 35.75cwt

Improved Layout



comfort

- GRADE III THERMAL INSULATION for guaranteed all weather comfort
- Alde Hydronic Compact 3010 24-hr programmable radiator heating system with combined water heating, digital clock display
- NEW additional 100mm interior length
- NEW interior height 6'5"
- 7'6" overall width
- Fixed beds now measure up to 6'4"
- Class-leading quality sprung upholstery with curved bolster cushions
- Wide-opening spring-assisted beech slat bases on all bunks and beds for easy access
- High bed frame with deep oak-effect bed base
- Deep memory foam mattress with Coolmax® technology (fixed bed models)
- Co-ordinating headboard for greater comfort and style (fixed bed models)
- Easy-lift fixed bed with gas struts for easy-access storage
- Seat bases with front access and space for bulky items
- Seat backrest ventilation boards for even heat distribution
- 'Chocolate' bamboo-effect easy clean heavy-duty vinyl flooring
- Easy clean Seitz blinds and flyscreens to all windows
- Heki Deluxe large tilting panoramic rooflight with pleated blind and separate flyscreen
- Flush-fit Seitz privacy double-glazed opening windows with night ventilation position
- Wider entrance door and flyscreen

style

NEW streamlined ultra modern body shell - with flush fitting windows, inclined wheel arches and curved roof rails.

The new modern, sharp and stylish exterior has been designed to reflect contemporary automotive design trends, culminating in a stunning and unique look, which will compliment any modern tow vehicle.

- The new stylish exterior also includes:
- NEW front window rain shield
 - NEW larger entrance door
 - NEW stylish moulded roof line
 - NEW aluminium one piece sides
 - NEW rear panel with LED high mounted brake lights
 - NEW chrome effect stylish grab handles
 - NEW graphics
 - UK manufactured 'Vulcan' sports alloy wheels
 - Twin reverse and fog lights with silver surround

- All new consumer design-led interior including:
- Fresh new interior design with co-ordinated luxurious 'Linden' soft furnishings
 - Alternative 'Estina' and 'Figaro' fabric options
 - Alternative 'Cardinal Mirage' leather option with 'Linden' accessories
 - Alternative Aquaclean® wipe clean 'Kento' option
 - NEW luxurious granite effect 40mm deep worktops
 - NEW style locker doors in 'Noce Prosecco' with Chrome handles and positive locking
 - Class-leading 100% LED interior lighting, saving up to 80% battery consumption and giving over 70% improved LUX readings, with even consistent lighting and longer life span
 - 24mm thick class-leading locker construction and cabinetry
 - Co-ordinating scatter cushions plus bolsters as standard
 - Removable 'Everest Twist' luxurious loose fit carpet
 - Twin curtain track for improved hanging and ease of use

entertain

- NEW class-leading 4 drawer chest unit with pull-out table for occasional dining
- NEW illuminated cocktail cabinet with wine bottle holder
- NEW Avtex 7-way TV with integrated DVD player, built-in Freeview, CD player, USB port (which can be used to record and playback programmes), 2 HDMI inputs and PC monitor
- NEW TV brackets
- Minimum of two TV points in every caravan with dedicated locations for comfortable viewing
- Dedicated 230V, 12V, satellite TV and coaxial aerial sockets
- Status 530 directional TV aerial
- Dedicated Freeview/Satellite connection
- Satellite connectivity as standard
- Up to seven 230V sockets
- 12V external outlet with solar panel connectivity
- 230V external outlet socket for an awning
- AM radio aerial
- CD radio tuner with iPod and mp3 connectivity and speakers
- Free standing dining table extension with dedicated storage location

practical

- NEW and exclusive 'Easy Glide' bed technology for easy bed conversion
- NEW floor construction 46mm deep with waterproof GRP outer skin
- NEW easy to use front window shelf electrical sockets (with USB charger)
- NEW class-leading full depth front lockers
- NEW LED large awning light with drip deflector above door
- NEW A-Frame cover with 'step-on' feature with plug ties
- NEW class-leading wider acrylic gas locker with dual gas struts
- Microwave isolation switch
- Class-leading BPW Swing V-tec chassis for improved towing stability
- BPW iDC (Intelligent Drive Control) anti-snaking device as standard
- Winterhoff WS3000 stabiliser
- Shock absorbers as standard
- Spare wheel and underslung carrier
- Easy action handbrake
- Mud flaps
- 13-pin 12V car connector
- 12V LED control panel with battery status meter, master 12V switch and water pump switch
- Fully protected mains electric system
- 20 Amp switchmode charger / transformer
- 25 meter mains hook-up cable
- Exterior access battery box with mains electric inlet (battery not included)
- Additional exterior access locker door adjacent to battery box (selected models)
- Up to two extra wide access exterior locker doors (selected models)
- Fixing points for rear mounted cycle 'Fiamma' universal carrier
- Whale Aquasource waterline system with new dual pump and auto-fill system and optional 40ltr onboard tank
- Inboard semi-rigid fresh water pipes
- Large bore under-slung rigid waste pipes with offside outlet
- Large universal gas bottle storage
- Additional shelves throughout
- Walk-in effect wide-opening wardrobe with multiple hanging options
- Entrance step and removable entrance mat with tray

wash

- NEW Thetford toilet with auto-fill water system and electric flush
- NEW domestic style shower cubicles with LED lighting (selected models)
- Fully lined shower cubicle
- NEW 'Night Sky' granite effect bathroom vanity basin
- Vanity areas with LED downlighting, shelves and dedicated sockets for hairdryer and appliances (selected models)
- Illuminated vanity mirror in bathroom
- Full length dressing mirror (selected models)
- Premium Whale high flow on-board pump with carbon filter for improved water flow to shower and sinks
- Polished chrome fittings, mixer taps and separate shower taps
- Separate shower mixers with adjustable head positions
- Domestic style bathroom door with high quality privacy lock
- Multi-positional rooflight with flyscreen and blind

cook

- NEW designer 'Night Sky' granite effect kitchen sink with integrated drainer and concealed storage
- NEW domestic size fridge-freezer with removable freezer unit creating more space (selected models)
- NEW larger pull-out kitchen storage baskets (selected models)
- NEW easy to access mounted microwave (selected models)
- NEW kitchen locker doors with resistant door catches
- NEW style Spinflo oven with 2 shelves and electronic ignition with pan storage below
- Dual fuel hob with 800W electric hotplate and 3 gas burners with durable smoked glass cover / additional worktop
- NEW clear vision multi-speed extractor fan
- Polished chrome fittings and taps
- Double electric socket in kitchen
- External gas barbecue point
- Pull-out worktop extension (selected models)

security

- NEW Carbon Monoxide (CO) alarm
- All Crusader models now have European Whole Vehicle Type Approval
- NEW side marker lights
- High security locks to all external doors
- Smoke alarm
- PIR (Passive Infra Red) and tilt-sensor alarm system
- Gas regulator for Propane and Butane mounted on front bulkhead
- Isolation taps for gas appliances
- CRiS identity number etched to windows and caravan chassis
- Concealed security data chip within caravan construction
- High security entrance lock with retractable key fob
- All models comply with British and European safety standards as independently verified by the National Caravan Council (NCC)



The 2012 Elddis touring caravan range, options and accessories are now available exclusively at our national network of approved retailers. Visit www.elddis.co.uk to find your nearest specialist Elddis supplier and to see 360° virtual tours, product reviews, news, offers and much more.

Elddis | Delves Lane | Consett | County Durham | DH8 7PE
Tel: 01207 699 000



Elddis
freedom
with Flair



The 2012 Elddis Crusader Touring Caravan range has been awarded EC Whole Vehicle Type Approval.



If you like what you see here, be sure to check out our exclusive, limited edition Buccaneer touring caravan range. www.buccaneercaravans.co.uk

Every Elddis caravan proudly carries the National Caravan Council (NCC) approved badge of quality. Elddis is a trademark of The Explorer Group Limited. Company Registration No. 02433663 England & Wales.



This brochure does not constitute an offer by Elddis. Elddis reserves the right to, and does alter from time to time, technical specifications, prices and model ranges as materials, model improvements and conditions require, and can accept no responsibility for discrepancies between these and subsequent models shown. This brochure is for guidance purposes only. Please be sure to check our full current and technical specifications with your retailer before placing your order. Please note that Approved Retailers are not the agents of Elddis. Accordingly they have no authority to bind Elddis or to make any representation or undertaking whatsoever on behalf of Elddis. Props shown in this brochure are for photographic purposes only and are not included in the specification. Bed covers and additional scatter cushions shown are for demonstration purposes only, similar co-ordinating sets are available to purchase from Jonic www.elddis.co.uk/jonic