



TC2004/06/11

All models are covered by a six-year bodyshell integrity guarantee and come with a three-year SuperSure manufacturer's warranty - see www.swiftcaravans.co.uk
For more details and more model pictures, the gallery is constantly updated as more models are available.

Conqueror



Swift Caravans · Dunswell Road · Cottingham · East Yorkshire HU16 4JX
Tel: 01482 847332 Fax: 01482 841042 email: enquiry@swiftgroup.co.uk

A member of the Swift Group

For more information and to find your nearest retailer visit us at www.swiftcaravans.co.uk



This brochure does not constitute an offer by Swift Group Limited (Swift). Swift reserves the right to alter specifications and prices at any time as materials and conditions demand. Distributors and dealers sell Swift products on their own account and not as agents of Swift. Accordingly, they have no authority to bind Swift or to make any representation or undertaking whatsoever on behalf of Swift. All props are for photographic purposes only and are not included in the specification. Issued August 2011

www.newconqueror.co.uk



The New Conqueror

Synonymous with impressive style, this top range enjoys an enviable combination of comfort, practicality and design innovation.

Exterior styling and interior refinement that have taken touring to a new dimension encompass this six model range which offers a new fixed twin bed layout amongst its range of single and twin axle models.

The sleek profile features a front sunroof which curves with the roof line. With AL-KO ATC stability control system added as standard to the shock absorbers and Hankook tyres, these models are some of the most aerodynamic and safest to tow.



Touring is about freedom and relaxation and Swift designers have worked hard to ensure the Conqueror can provide just that.

'Mali Acacia' woodgrain offers richer colouring with a defined woodgrain texture and the contour of the front panel allows for maximum headroom and roof-locker space throughout. The panoramic front sunroof gives a great view out and comfort is assured with the padded corner backrests and large scatter cushions.



Alde radiator central heating and water heating with daily programming >>



Chest of drawers design makes it easy to create a small table without disturbing items on top >>





Positive locker catches for secure storage on the move

«Impala» upholstery option

A choice of flexible seating and sleeping arrangements combine with well equipped kitchens and washrooms.

New bed make-up system with slats retained on track >>



«Low energy lighting system throughout with ambient over-locker lights and LED task lights

Seat bases with spaceframe construction, full front access and space for larger items >>



«6 x 230V sockets to cater for modern needs, including two in the neat and convenient front shelf pod

Locker mounted eye level power supply unit and power management for easy access >>



«User friendly 12V control panel set in moulded housing with key shelves





Large front door with double gas struts for easy access and step on hitch cover for easy cleaning of front windows



BBQ point for alfresco cooking



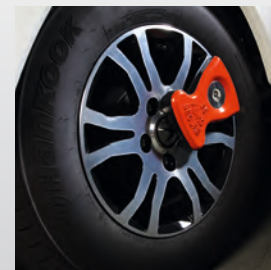
Heavy duty rear corner steadies and profiled skirts



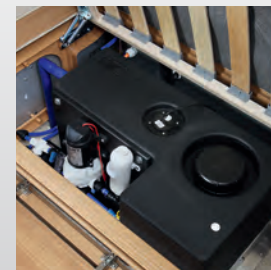
Optional 'Impala' stain-resistant, easy-clean seating fabric with soft nubuck texture



AL-KO ATC trailer control system as standard



Hankook tyres with a minimum of 150kg extra load margin for improved performance and safety and AL-KO secure wheel lock



30 litre internal fresh water tank with additional pump for tank filling or direct feed to taps



Rain water deflector over front windows for a clearer view out



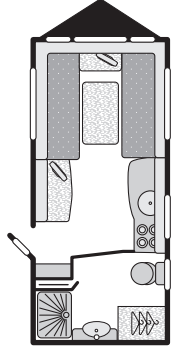
Semi-recessed awning channel on both sides for flexibility



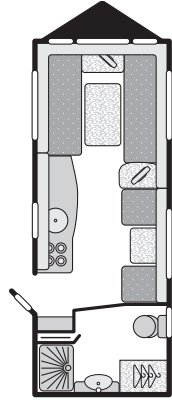
Gas regulator with stainless steel braided hose for improved reliability



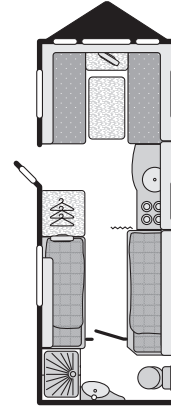
480



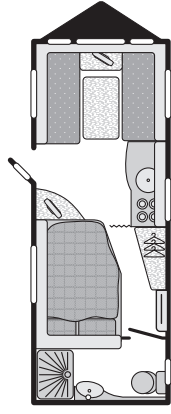
530



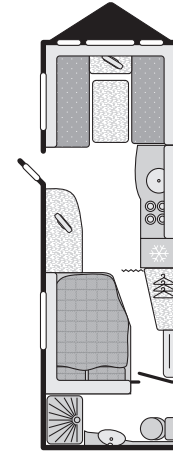
565



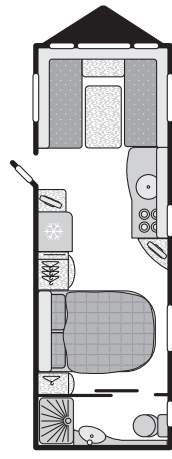
570



630



645



Berths	2	4
Number of Axles	1	1
Internal Length (at bed box height)	4.74m / 15' 7"	5.50m / 18' 1"
Overall Width	2.31m / 7' 7"	2.31m / 7' 7"
Overall Height (inc. TV Aerial)	2.62m / 8' 7"	2.67m / 8' 9"
Maximum Internal Headroom	1.95m / 6' 5"	1.95m / 6' 5"
Overall Length	6.46m / 21' 2"	7.22m / 23' 8"
Awning A/A Dimension	9.12m / 29' 11"	9.88m / 32' 5"
Mass in Running Order (inc. tolerance)	1335kg / 26.3cwt	1497kg / 29.5cwt
Maximum Technical Permissible Laden Mass	1460kg / 28.7cwt	1650kg / 32.5cwt
Total User Payload	125kg / 2.5cwt	153kg / 3.0cwt
Personal Effects Payload	125kg / 2.5cwt	153kg / 3.0cwt
Tyre Size	185 R14C 102 Q	195/70 R15C 104 R
Thermal Insulation Grade	THREE	THREE
Front Double	209cm x 186cm / 6'10" x 6'1"	209cm x 176cm/6'10" x 5'9"
Or Front Nearside Single	186cm x 71cm / 6'1" x 2'4"	176cm x 71cm / 5'9" x 2'4"
And Front Offside Single	186cm x 71cm / 6'1" x 2'4"	186cm x 71cm / 6'1" x 2'4"
Rear Double		
Side Single Offside		180cm x 69cm / 5'11" x 2'3"
Side Single Nearside		
Side Bunk Offside		176cm x 59cm / 5'9" x 1'11"

4	4	4	4
1	1	2	2
5.60m / 18' 4"	5.60m / 18' 4"	6.27m / 20' 7"	6.27m / 20' 7"
2.31m / 7' 7"	2.31m / 7' 7"	2.31m / 7' 7"	2.31m / 7' 7"
2.67m / 8' 9"	2.67m / 8' 9"	2.62m / 8' 7"	2.62m / 8' 7"
1.95m / 6' 5"	1.95m / 6' 5"	1.95m / 6' 5"	1.95m / 6' 5"
7.32m / 24' 0"	7.32m / 24' 0"	7.99m / 26' 3"	7.99m / 26' 3"
9.98m / 32' 9"	9.98m / 32' 9"	10.65m / 34' 11"	10.65m / 34' 11"
1481kg / 29.2cwt	1496kg / 29.4cwt	1654kg / 32.6cwt	1624kg / 32.0cwt
1635kg / 32.2cwt	1650kg / 32.5cwt	1814kg / 35.7cwt	1784kg / 35.1cwt
154kg / 3.0cwt	154kg / 3.0cwt	160kg / 3.1cwt	160kg / 3.1cwt
154kg / 3.0cwt	154kg / 3.0cwt	160kg / 3.1cwt	160kg / 3.1cwt
195/70 R15C 104 R	195/70 R15C 104 R	185/70 R14 88 T	185/70 R14 88 T
THREE	THREE	THREE	THREE
209cm x 156cm / 6'10" x 5'1"	209cm x 156cm / 6'10" x 5'1"	209cm x 156cm / 6'10" x 5'1"	209cm x 156cm / 6'10" x 5'1"
156cm x 71cm / 5'1" x 2'4"	156cm x 71cm / 5'1" x 2'4"	156cm x 71cm / 5'1" x 2'4"	156cm x 71cm / 5'1" x 2'4"
156cm x 71cm / 5'1" x 2'4"	156cm x 71cm / 5'1" x 2'4"	156cm x 71cm / 5'1" x 2'4"	156cm x 71cm / 5'1" x 2'4"
	188cm x 133cm / 6'2" x 4'4"	188cm x 133cm / 6'2" x 4'4"	185cm x 133cm / 6'1" x 4'4"
190cm x 71cm / 6'3" x 2'4"			
181cm x 72cm / 5'11" x 2'4"			

You can be reassured when you buy a Swift Caravan that they all come with the following market leading features

Swift Plus Points

- European Whole Vehicle Type Approval ensures compliance with strict weight, dimension and safety regulations
- EN1645 Grade 3 classification for heating and thermal insulation (Cold chamber tested)
- 1.95m (6'5") headroom
- One-piece, 5000 Series marine grade aluminium sidewalls
- Strong redwood body and floor framing specially treated to resist moisture and fungal attack
- Hankook branded tyres for improved performance and safety
- Higher tyre rating - a minimum of 150kg extra load margin at 130kph (law permitting)
- Shock absorbers for a smoother more stable ride
- Step-on hitch cover for easy access to clean front
- Gas regulator fitted with stainless steel braided hose for improved reliability
- High security entrance lock for peace of mind
- Aerial point in battery box for portable satellite dish connection
- Two TV stations with 230V, 12V and aerial sockets in most models (see floorplans for detail)
- New:** Bed make-up system with slats retained on track
- Seat bases with spaceframe construction, full front access and space for larger items
- Areas under beds and seats warmed by blown air system and underfloor ducting insulated to minimise heat loss
- Front chest of drawers with convenient slide-out extending top
- Large dining table (1000mm x 600mm) for full-size place settings
- Positive overhead locker catches for secure storage on the move
- Dual fuel hob with 800W electric hotplate and 3 gas burners with electronic ignition
- Ventilated microwave oven with digital controls built in at low level
- High flow rate in-board pump with chrome finish brass taps for reliable, high performance water supply
- Ventilated shower mixers with adjustable head positions
- High impact, scratch resistant floor lino
- Large capacity door waste bin
- Solar panel connection provision

Additional features

- Exterior**
- 2.31m (7'7") overall width
 - Metallic silver finish side walls
 - AL-KO Secure wheel lock (two on twin-axle models)
 - AL-KO side-mounted jack
 - Panoramic front roof window with automotive style roof locker system as standard
 - Full height front with wide door made with strong closed-mould GRP
 - Rain water deflector over front windows incorporating brand badge
 - Imposing rear panel with latest generation rear light clusters
 - Roof capping rails integrating with front and rear panels
 - Semi-recessed body coloured awning channel on both sides
 - Extra strong, thermally efficient 32mm thick fully bonded walls and roof
 - Wheel arches insulated with high density foam to prevent cold spots in storage areas
 - Profiled side skirts in tough self coloured uPVC with integrated awning channel
 - 'Storm' exclusive alloy wheels in high-power silver and gloss black
 - Heavy duty corner steadies all round
 - BBQ point
 - Larger entrance door - 45mm (2") wider and 80mm (3") taller than standard size
 - External access door under front nearside seat
- Interior**
- Large external access door under fixed beds (model specific)
 - Exterior access battery box and mains electric inlet (battery not included)
 - AL-KO galvanised steel chassis with Euro-Axle
 - 44mm 'sandwich' floor with pre-treated plywood and Styrofoam insulation core
 - AL-KO AKS 3004 stabiliser with new operating handle
 - AL-KO Euro overrun device with two-way assisted handbrake
 - 13-pin 'Jaeger' 12V car connector
 - Spare wheel (steel) and underslung carrier
 - Exclusive shape double-glazed opening windows with night ventilation position
 - LED awning light
 - Entrance step
 - Door flyscreen with easy concertina action
 - Granite effect kitchen sink with integrated occasional drainer and removable extension drainer
 - Heki Deluxe large tilting panoramic roof window with flynet and pleated blind
 - Multi-position 'Mini-Heki' or 'Midi-Heki' clear roof light with flyscreen and blind (model specific)
 - Large overhead lockers with injection-moulded spaceframe construction and curved doors
 - Removable carpet with 45oz pile weight

- 'Ultra Comfort' luxury deep sprung bed mattress in fixed bed models
 - Lined washroom cubicles in all models
 - Fixed beds with aluminium frames to maximise strength and storage space
 - Hinged seat and bed tops supported in open position for easy access
 - Mattresses and seat cushions supported by beech slats for extra comfort
 - Seat and backrest ventilation boards
 - Two large scatter cushions
 - Twin curtain track for improved hanging and ease of use
 - Removable sink drainer with dedicated storage
 - Food grade nylon chopping board with dedicated storage
 - Slide-out storage rack
 - Moulded cutlery drawer on smooth steel runners
 - 32mm thick lightweight washroom door with metal domestic style handle
 - Thetford C250 toilet with 18 litre wheeled holding tank
- Equipment**
- ALDE radiator central heating and water heating with daily programming
 - New:** ALDE towel radiator in washroom (except 645)
 - 30 litre internal fresh water tank with additional external pump for filling or direct feed to taps
 - Low energy lighting system throughout with ambient over-locker lights and LED task lights
 - New:** LED down lighters set in plinth over kitchen locker
 - Six 230V sockets including two in compact new front shelf pod
 - Locker mounted eye level power supply unit & power management for easy access
 - User friendly 12V control panel with battery selection, battery state meter, lighting, water tank level (Twin Axle models) and water pump circuit controls set in moulded housing with key shelves
 - 107 litre fridge with metallic finish, electronic ignition and digital controls
 - Thermostatic oven and separate grill
 - Glass hob lid with safety cut-out feature
 - Inboard semi-rigid fresh water pipes
 - Isolation taps for gas appliances
 - Large bore underslung rigid waste pipes
 - 25 Amp switchmode charger/transformer
 - Status 530 directional Digital / Analogue TV/ FM aerial and booster
 - Radio/CD/MP3 player with iPod/MP3 player connection
 - 25 metre mains hook-up cable
 - External 230V mains socket

Safety and Security

- New:** AL-KO ATC trailer stability control fitted as standard
 - Passive infra-red alarm system with tilt sensor and key fob operation
 - Receiver for optional AL-KO Secure wheel lock
 - Smoke alarm
 - New:** Carbon Monoxide alarm
 - CRIS identity number etched to windows and caravan chassis
 - Concealed security data chip within caravan construction
- Factory-Fit Option**
- 'Impala' stain-resistant, easy-clean seating fabric with soft nubuck texture
- Dealer-Fit Options**
- Wrap-around seating in addition to drawer chest
 - Dometic B2200 roof-mounted air conditioner (twin-axle models only)

AWNING SIZES: Due to the varying awning designs and sizes the awning sizes given are approximate only. Specific awning sizes must be confirmed by your dealer or the awning manufacturer prior to purchase.

Bed Sizes: Please note that the front double bed sizes quoted are for seating configurations without chest of drawers. The front double bed width for a layout with a chest of drawers fitted will be reduced by 0.4m(1'4") from that stated.

Weights: The method of calculating the Mass in Running Order (MRO) and user payload figures has changed in order to bring it in line with European Vehicle Directives.

Allowances for essential equipment (e.g. gas cylinders) previously allowed for in the user payload are now contained within the MRO. A provision for a leisure battery which used to be within the essential equipment payload has now been included within the personal effects payload allowance. Although the method of calculation has changed, the overall effect is that the amount of payload available to the customer has remained the same, it is just calculated in a different manner.