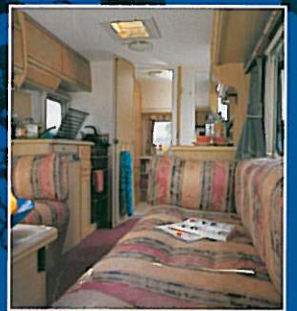




Bailey of Bristol
1999 Range





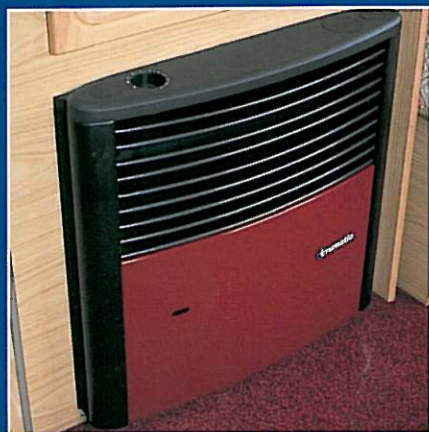
New Ranger Graphics



Wrap around Light Clusters with
Integral Warning Triangle



Electrolux 77 Litre Fridge
- Ranger and Pageant



New Truma 3kw Heater - Ranger



Full Length Flyscreen to Exterior Door



New Bonded Back Panel - Ranger



New Additional Washroom Furniture
- Pageant and Senator



New Pageant 3-D Graphics



Swing Out Kitchen Unit
- All End Kitchen Models



Thetford Toilet Cassette with
Integrated Heater Tank



Swivel Thetford Toilet - All separate
Shower Washroom Models



New Stylish Wheel Trims

INTRODUCTION

May we introduce to you our 1999 portfolio. We are proud and honoured that you should be considering a Bailey Touring Home and hope that you will find this brochure informative and helpful in making your final purchasing decision.

Over recent months we have been honing and fine tuning our portfolio in preparation for the new season. Major design and technical developments have taken place, amongst which we are proud to announce that Bailey of Bristol have become the first British manufacturer to achieve a grade two classification within the new European Standard for heating and thermal insulation of Touring Homes (EN 1645-1).

There can however be no substitute for seeing our tourers 'in the flesh' and we invite you to visit your local Bailey retailer to view a selection of new Baileys at your leisure.

For 1999 we present twenty different models across four distinct ranges, each offering all the virtues for which Bailey have become renowned not least of which remains outstanding value for money.

Please read on and we hope you find the Bailey Touring Home to suit your lifestyle.

<i>Ranger</i>	<i>page 4</i>
<i>Pageant</i>	<i>page 8</i>
<i>Senator</i>	<i>page 12</i>
<i>Regency</i>	<i>page 16</i>
<i>Three Year Warranty</i>	<i>page 19</i>
<i>Specifications</i>	<i>page 20</i>



Ranger 460/2

RANGER

Since its launch in 1996 Ranger has taken the market by storm, redefining the concept of an entry level Touring Home as a product offering tasteful styling, a cutting edge technical specification and previously unheard of value for money. Indeed Ranger has become the accepted generic term for its section of the market.

For 1999 Ranger benefits from its first major facelift since that 1996 launch, whilst still remaining true to those three fundamental concepts of style, technical excellence and outstanding value.

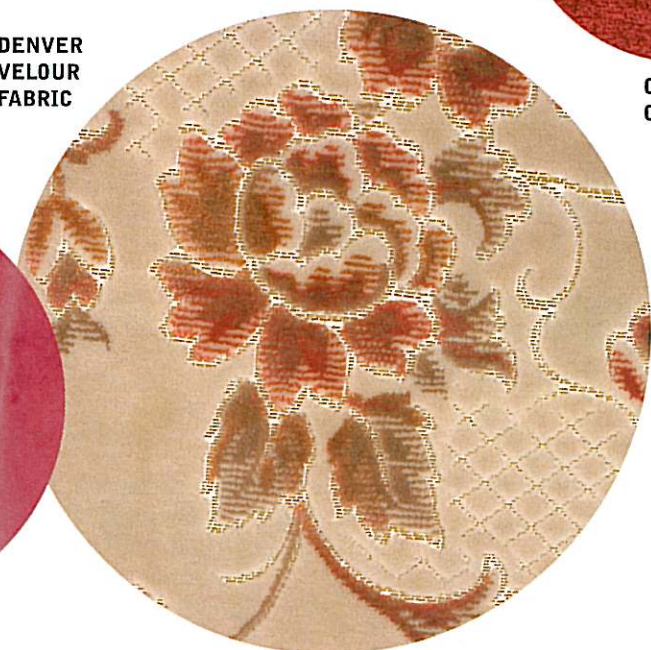
Increases to an already extensive specification include new full width freezer compartment Electrolux fridge, door flyscreen and 3kw space heaters in all models.

A new exterior graphics package harmonised with tastefully restyled interior colourways all combine with a recommended retail price to take your breath away!

CURTAIN MATERIAL



DENVER
VELOUR
FABRIC



CARPET
COLOURWAY



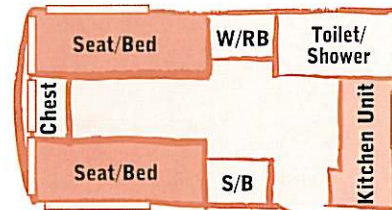
RANGER



The corner washroom of the Ranger 380/2

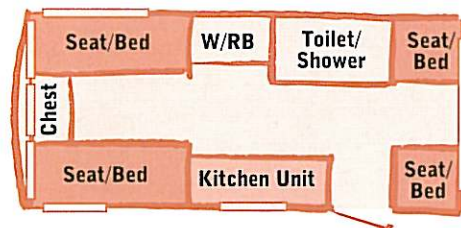
380/2

2 Berth



440/4

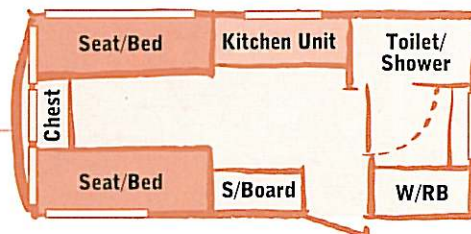
4 Berth



The rear dinette of the Ranger 440/4

450/2

2 Berth



The fully equipped Ranger 450/2 kitchen unit

New Ranger features for 1999

- > Truma Ultrastore water heater (Gas/electric operation)
- > Thetford cassette toilet with integrated header tank (Swivel unit on separate shower washroom models)
- > Electrolux RM4270 77 litre refrigerator with full width freezer compartment
- > Spinflow Caprice combined 4 burner hob/grill and domestic style glass fronted oven plus flame failure device
- > 'Denver' velour fabric with matching lined curtains, pelmet covers and scatter cushions

RANGER

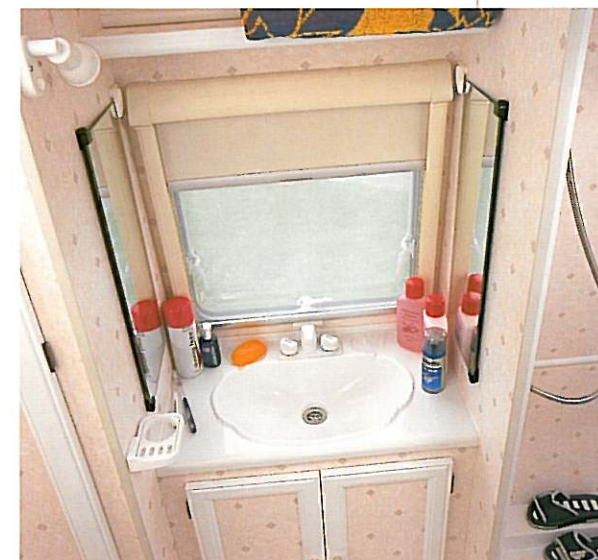
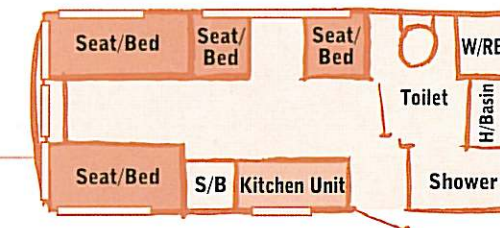
470/4

4 Berth



The sturdy side bunk assembly of the Ranger 470/4

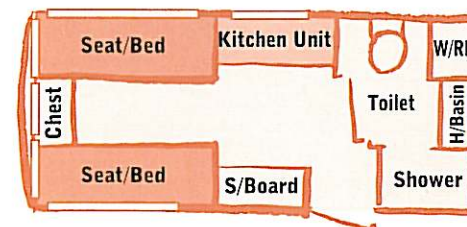
NEW LAYOUT



The spacious end washroom of the Ranger 460/2

460/2

2 Berth

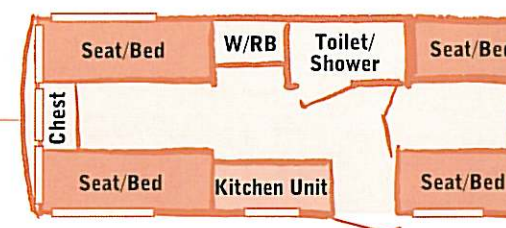


New Ranger features for 1999

- > Bonded back panel for added rigidity
- > More durable ABS hitch cover
- > Wrap around rear light cluster with integral warning triangle
- > New and distinctive Ranger design graphics
- > Truma 3002 3kw heater as standard
- > Full length flyscreen to exterior door

500/5

5 Berth



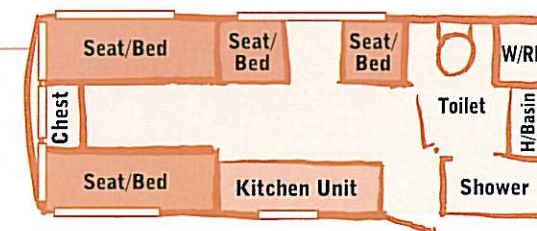
The front saloon of the Ranger flagship, the 500/5



The popular Ranger 510/4 layout in 'Denver' velour upholstery

510/4

4 Berth





PAGEANT

Now entering its eighteenth year of continuous production Pageant is a name truly synonymous with the success of Bailey of Bristol. From humble beginnings Pageant has grown and matured into the clubman's first choice.

With a history of award winning performance including many 'Tourer of the Year' titles and a design brief which encourages evolution rather than revolution, Pageant shapes up for the 1999 season as a range of proven layouts offering luxury and dependable performance to the enthusiast and frequent user.

Exteriors are enhanced with new graphics, Polyplastic windows and re-engineered gas bottle stowage. Whilst an already extensive equipment manifesto is added to with new chassis mounted spare wheel carrier and new carver 4000 space heater.

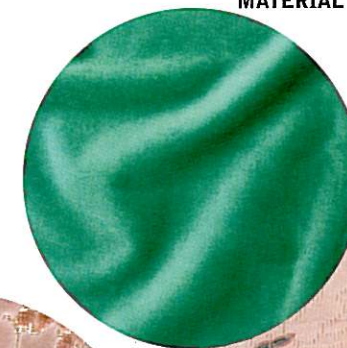
If last season's sales performance is an indicator of probable demand early viewing of Pageant is recommended!

CARPET
COLOURWAY



CURTAIN
MATERIAL

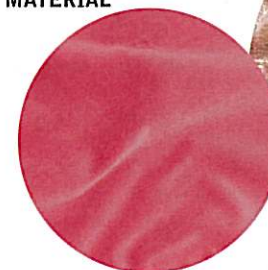
BEGONIA
JACQUARD FABRIC



OPTIONAL BOSTON
VELOUR FABRIC



OPTIONAL CURTAIN
MATERIAL

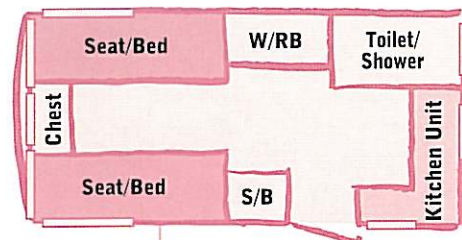




The compact and well designed end kitchen of the Pageant Majestic

Majestic

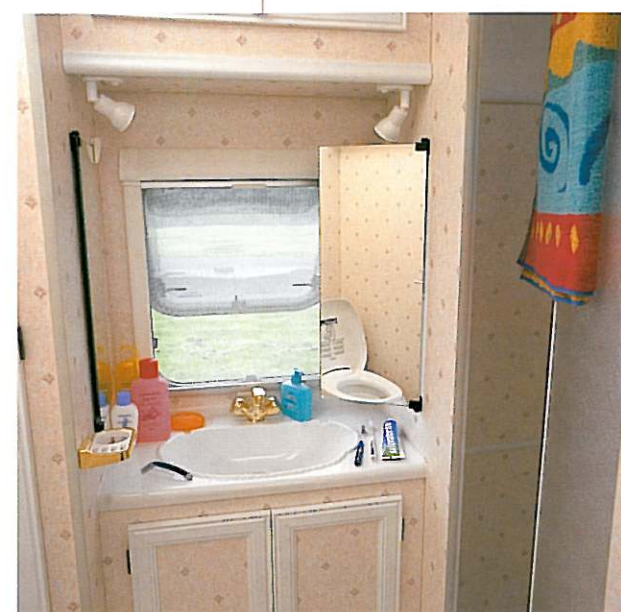
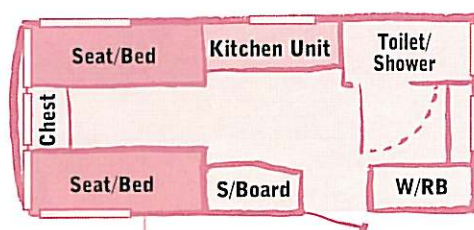
2 Berth



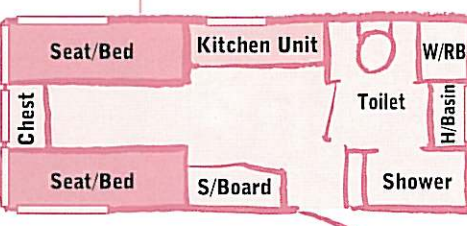
The Pageant Magenta features a comprehensive and fully specified kitchen

Magenta

2 Berth



The well equipped end washroom of the Pageant Imperial



Imperial

2 Berth

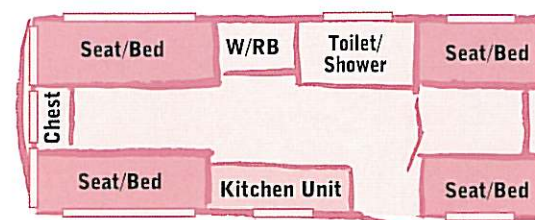
New Pageant features for 1999

- > Thetford cassette toilet with integrated header tank (Swivel unit on separate shower washroom models)
- > Spinflow Caprice combined 4 burner hob/grill and domestic style glass fronted oven with spark ignition and flame failure device
- > Standard 'Begonia' jacquard fabric with matching lined curtains, pelmet covers and bolster cushions

NEW LAYOUT

Auvergne

5 Berth



New Pageant features for 1999

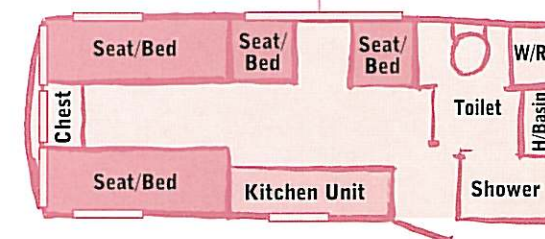
- > Chassis mounted spare wheel carrier
- > Polyplastic rounded windows
- > Reinforced gas bottle locker swing up lid
- > New and distinctive design graphics with 3-D Pageant poly-badges
- > Ceramic ball kitchen mixer taps
- > Carver 4000 Space heater with automatic ignition, silent running night setting and integrated fanmaster control
- > Additional washroom storage furniture



The spacious front saloon of the Pageant Auvergne shown in the optional 'Boston' velour fabric



The side dinette featured in both Champagne and Moselle models

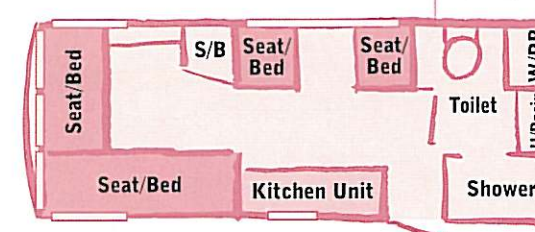


Champagne

4 Berth

Moselle

4 Berth



The Pageant Moselle features a dedicated L shaped front saloon shown in standard 'Begonia' jacquard upholstery



SENATOR

For those seeking an endurance Touring Home with the ability to devour long distances and provide luxurious accommodation at journey's end, the Senator offers the ideal solution.

Senator begins its second decade in the Bailey portfolio with many exciting new features, perhaps most striking is the new exterior, encompassing a re-profiled high level GRP front panel. Classically understated graphics in gold and bronze combine with new polyplastic frame effect windows to give a fresh new image. Entering the living area the eye is immediately drawn to the new increased storage capacity aircraft style lockers and new soft furnishings.

In terms of equipment Senator continues in a five star vein. 1999 sees the addition of a radio C.D. to standard specification and an unbeatable package once again includes standard fit Electrolux air conditioning.

Travel and arrive in style, choose Senator!



OPTIONAL
PERGOLA
WOVEN
JACQUARD
FABRIC

OPTIONAL
CURTAIN
MATERIAL

RAWHIDE
FABRIC

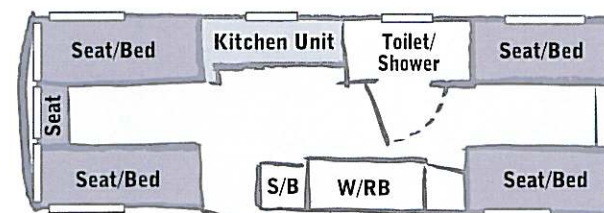
CARPET
COLOURWAY

CROWSON
CURTAIN
MATERIAL



Camargue

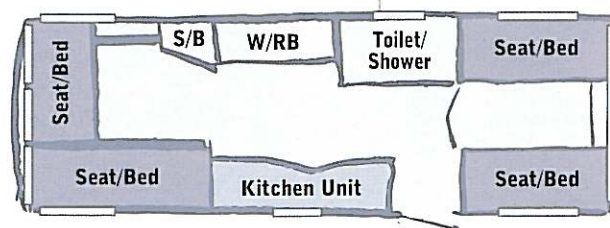
4 Berth



Shown in standard 'Rawhide' upholstery the luxurious front saloon of the Senator California

NEW LAYOUT Montana

5 Berth

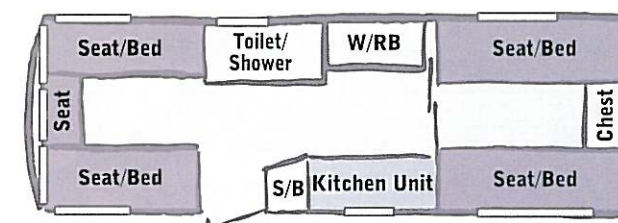


New Senator features for 1999

- > Thetford cassette toilet with integrated header tank (Swivel unit on separate shower washroom models)
- > Additional washroom storage furniture
- > Spinflow Caprice combined 4 burner hob/grill and domestic style glass fronted oven with spark ignition and flame failure device
- > Aircraft style overhead storage lockers
- > 'Rawhide' interior sprung upholstery as standard with matching lined curtains, pelmets and bolster cushions



A gourmet's delight - the kitchen of the Senator California



Nevada

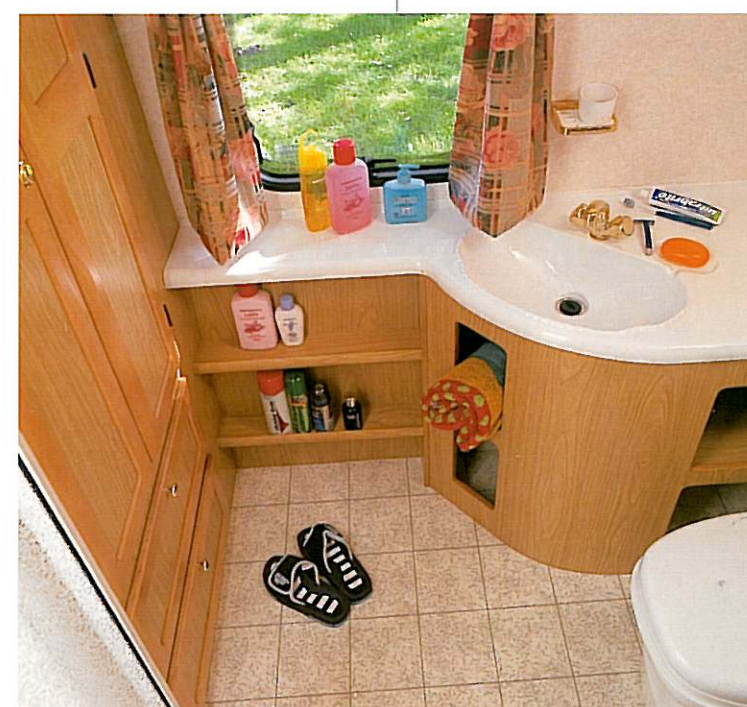
6 Berth

New Senator features for 1999

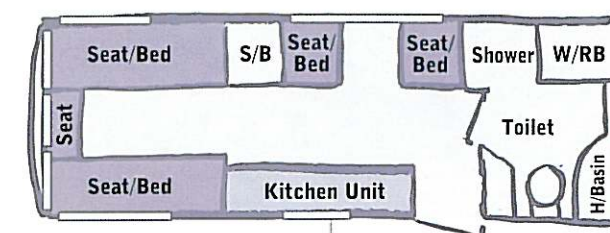
- > One piece GRP front panel with elegant high line profile
- > Polyplastic rounded windows
- > Reinforced gas bottle locker swing up lid
- > External gas barbeque point
- > Distinguished new gold design graphics with 3-D Senator poly-badges
- > Circular halogen ceiling lighting
- > Enhanced blown air heating throughout tourer interior
- > Carver 4000 Space heater with automatic ignition, silent running night setting and integrated fanmaster control



Looking astern the popular four berth Senator California



The award winning Senator California rear end washroom



California

4 Berth



Regency 472

Introducing the new 50th Anniversary celebration model...

REGENCY

Occasionally in life something special comes along, an event which strikes a chord and seems to make perfect sense. With fifty years of expertise gained in the design and crafting of luxurious Touring Homes the time is right for Regency.

A celebration of our touring heritage, Regency is a future classic in the making. Offering sumptuous levels of comfort combined with mouth watering equipment levels clothed in a state of the art bodyshell. Regency offers three proven layouts available in limited numbers for the 1999 season.

To make an appointment to view one of these most special Baileys contact your local Bailey retailer now!

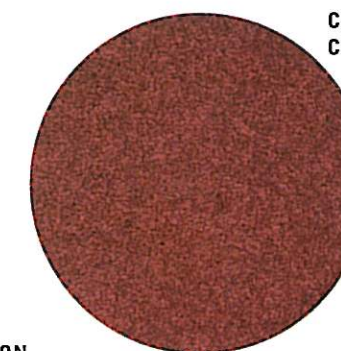
OPTIONAL CURTAIN MATERIAL



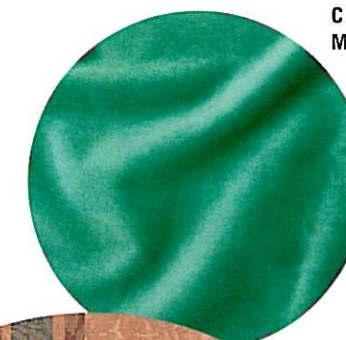
OPTIONAL HAMILTON VELOUR FABRIC



CARPET COLOURWAY



CURTAIN MATERIAL



DARWIN CROWSON JACQUARD FABRIC

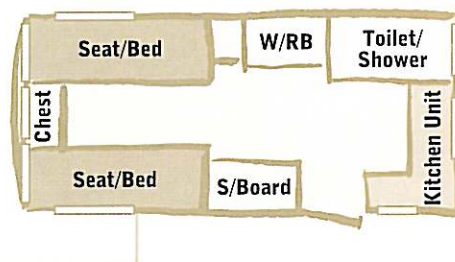




The front saloon of the Regency 442 shown in optional 'Hamilton' velour upholstery

442

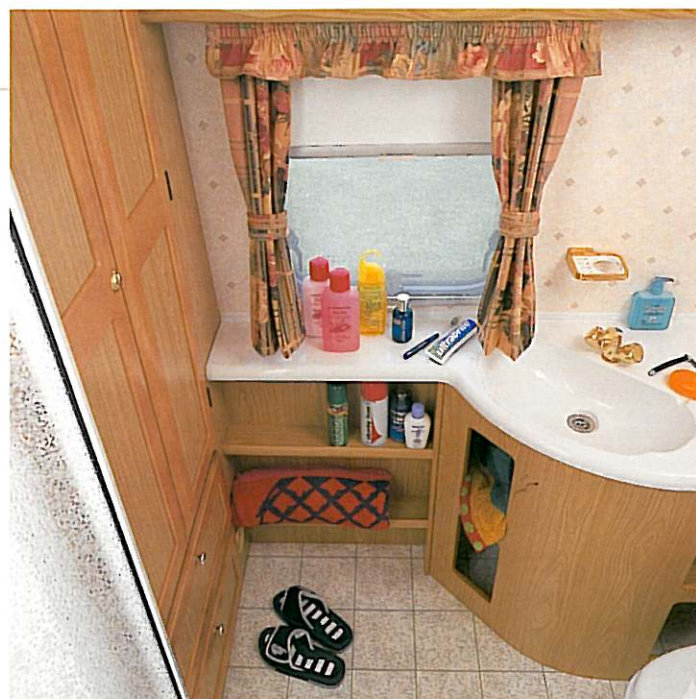
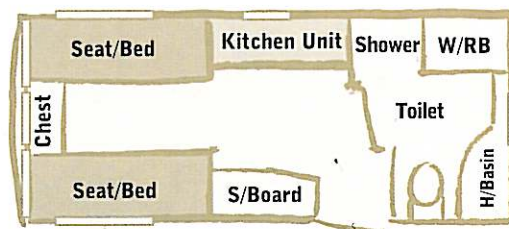
2 Berth



The Regency 472 shown in standard 'Darwin' jacquard upholstery

472

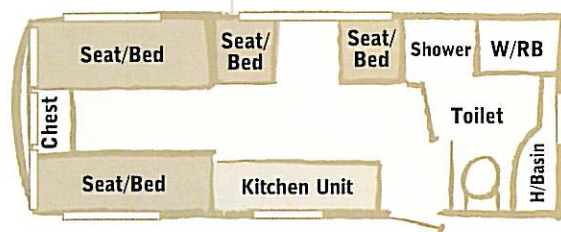
2 Berth



The spacious end washroom of the Regency 523

523

3 Berth



Regency three brand new layouts including:

442 > A 4.4 metre end kitchen 2 berth in the classical mould

472 > A 4.7 metre 2 berth with an award winning 'California' style end washroom

523 > For those seeking even more living space, a 5.2 metre 2-3 berth end washroom layout with the added convenience of a dedicated side dinette

When you are making key purchasing decisions do you look for products backed up by a comprehensive package of After Sales support and a history of reliability?

Bailey of Bristol believe you do and that is why we offer a package of warranty cover which is the envy of the touring home industry.

The additional cover that is available is provided at no extra cost to you the customer. It is a factory backed scheme which has been created to give you additional re-assurance in the structure and integrity of the tourer bodyshell, running gear and equipment.

Should you experience the unusual event of something going wrong then your first 'port of call' should be the Bailey Retailer from whom you purchased the tourer. There you should find all the help you need to correct any faults or problems that exist, backed up by the 'down the line' support we give to all approved Bailey Retailers.

Remember, always contact your supplying Retailer first. They will welcome the opportunity to resolve any problems you may encounter.

During the first year of ownership every Bailey Tourer is covered by one of the most complete and comprehensive Warranty schemes available.

For a period of 12 months from the date of purchase Bailey of Bristol offer a comprehensive warranty on all parts and components, as well as full coverage for any manufacturing faults. Many components used by Bailey are manufactured by well known brands (e.g. Electrolux, Carver etc) and these suppliers in turn offer packages of cover in conjunction with your supplying Retailer.

The second and third year of cover extends to these items:

Chassis; all chassis members including outriggers.

Suspension; springs, hangers, shackle pins, bushes, shock absorbers and mountings.

Running Gear; axles, hubs, hub bearings, hub oil seals, road wheels (excluding tyres and tubes).

Braking Systems; all mechanical linkage, backing plates, actuators, drums and shoes, (Exclusions: this warranty does not cover damage to brake drums, shoes or any faults caused through misuse of the braking system or normal wear and tear).

Towing Mechanism; all mechanical components fitted to tourers (excluding electrics).

Body Leaks & Delamination; water ingress through any permanently sealed seam or joints or delamination of panels and floor, being part of the original manufacturer's construction.

Cooker; the cooker unit including burners, grill, oven and flame failure device and igniter.

Fridge; door seal, condenser, gas control valve, gas igniter, flame and failure device, 12 and 240v heater elements, gas thermostat, 240v thermostat, 240v temperature control switch.

Water System; water heater (gas or electric), fresh water tank, water pump, water gauges, taps and shower head.

Auxiliary Electrics; mains hook-up input connector, ELCB, battery charger and distributor unit, interior lighting units (excluding bulbs).

Cassette Toilet; the cassette toilet is covered (excluding seals, valves and glands).

Heating System; thermostat, motor, switches, control unit, gas heater, flame failure device, igniter (excluding ducting and fittings).

The above offer is subject to the following conditions. The Warranty offer does not affect your statutory rights.

Warranty Extension

An additional 4 and 5 Year Warranty Package is also available. Please contact your local Bailey retailer for details.



The Bailey 3 Year Warranty is offered subject to the following simple conditions:

1. The duration of this warranty is 36 months from the date of purchase.
2. That the seams, joints and panels requiring repair are part of the original construction of the tourer and have not been tampered with or repaired otherwise than by Bailey Caravans Limited or an authorised Bailey dealer.
3. That an authorised Bailey dealer has inspected the tourer annually from the date of purchase as new (or within 6 weeks of each anniversary of purchase).
4. That original VAT invoices be retained as proof those annual inspections have been carried out.
5. That in the event of any repairs being identified as being necessary during the course of an annual inspection the tourer is made available to an authorised Bailey dealer or Bailey Caravans Limited within 6 weeks for the purpose of carrying out the repair work.
6. No repairs, including the fitting of any replacement unit, may be undertaken or commenced under the terms of the agreement unless authorisation is obtained by an authorised Bailey retailer from Bailey Caravans Limited. No liability will exist with regard to any claims not authorised in this way.
7. Bailey Caravans Limited reserve the right to examine the tourer before any repairs commence or any replacement part fitted.
8. No liability will be accepted for damage caused by neglect, corrosion, intrusion of foreign or deleterious matter, lack of servicing, over-heating, freezing or abuse or the continued use of the tourer after a fault has become evident or for the consequential loss or damage to parts not covered by this agreement.
9. That tourers covered by this agreement shall not be put out to hire, reward or any other commercial use in any timed competition race.
10. That the tourer shall be used only for its ordinary and intended purpose and shall not be subjected to any treatment or conditions which could reasonably be foreseen to cause or result in damage to the tourer or excessive wear and tear.
11. That the tourer registration card shall have been sent to Bailey Caravans Limited within 6 weeks of its purchase as new.
12. That private cars, or 4x4 type vehicles substituting as private cars, shall have only towed the tourer.
13. This agreement is personal to the purchaser of the tourer as new from an authorised Bailey dealer or their authorised representative and shall not be transferable by way of assignment, novation or otherwise.
14. Bailey Caravans Limited's liability under this agreement shall be limited to supplying labour and materials of a value not exceeding £2,500 including VAT in respect of each claim or series of claims. No liability arises out of this agreement for consequential costs or damage or for repair costs (other than labour materials).
15. No liability will be accepted for any accidental or fire damage or any losses incurred by accident or fire.
16. No liability will be accepted for transport costs to and from point of repair or consequential cost relating to transportation.
17. No liability of any kind exists in respect of third parties or bodily injury.

This agreement does not affect the purchaser's statutory rights.



Bailey of Bristol 1999 Range

TECHNICAL SPECIFICATIONS

Since 1st September 1998 a new touring home must comply with certain new European standards which replace existing British standards. One such standard (EN1645-2) covers tourer weights and requires a detailed breakdown of tourer payload in the interests of greater towing safety. The following definitions now apply:

(i) Maximum Technically Permissible Laden Mass (MTPLM)

The absolute limit to which the tourer can be loaded. Previously this was known as Maximum Technically Permissible Weight.

(ii) Mass in Running Order (MRO)

The mass of the unladen tourer as supplied from the factory. This was previously known as Ex. Works Weight.

(iii) User Payload is MTPLM - MRO

Payload is further broken down into three subsidiary parts:

a) Essential Habitation Equipment (EHE)

- a weight allowance for operational tourer services e.g. liquid petroleum gas, fluids in water, waste and toilet systems and electrical supply.

b) Personal Effects (PEP)

- a weight allowance for items common to all tourer occupants e.g. food, kitchenware, bed linen, clothing etc. This is a calculation based on tourer length and the number of berths.

c) Optional Equipment (OEP)

- a weight allowance for optional equipment offered as a retailer fitted upgrade. The figure quoted in the brochure is a total figure but a breakdown of the allowance for individual items can be found in the retailer fitted upgrades price list.

The total user payload = EHE + PEP + OEP

The payload in this brochure will be quoted as a total and by its component parts. If you require any further information on the new weight classifications please contact Bailey of Bristol.

RANGER							
	380/2	440/4	450/2	460/2	470/4	500/5	510/4
Berths	2	4	2	2	4	5	4
Internal Length	3.759m 12'4"	4.435m 14'7"	4.547m 14'11"	4.547m 14'11"	4.731m 15'6"	5.032m 16'6"	5.159m 16'11"
Shipping Length	5.249m 17'3"	5.925m 19'6"	6.037m 19'10"	6.037m 19'10"	6.221m 20'5"	6.522m 21'5"	6.649m 21'10"
Overall Width	2.19m 7'2"	2.19m 7'2"	2.19m 7'2"	2.19m 7'2"	2.19m 7'2"	2.19m 7'2"	2.19m 7'2"
Overall Height	2.71m 8'10"	2.71m 8'10"	2.71m 8'10"	2.71m 8'10"	2.71m 8'10"	2.71m 8'10"	2.71m 8'10"
Internal Headroom	1.90m 6'3"	1.90m 6'3"	1.90m 6'3"	1.90m 6'3"	1.90m 6'3"	1.90m 6'3"	1.90m 6'3"
Tyre Sizes	175 R13 4 ply	165 R13 6 ply	165 R13 6 ply	165 R13 6 ply	165 R13 6 ply	165 R13 6 ply	165 R13 6 ply
Awning Size (gd to gd)	795cm	867cm	873cm	873cm	896cm	928cm	942cm
M.T.P.L.M.	995kg 19.6cwt	1135kg 22.3cwt	1083kg 21.3cwt	1091kg 21.4cwt	1132kg 22.3cwt	1230kg 24.2cwt	1199kg 23.6cwt
M.R.O.	766kg 15.1cwt	876kg 17.2cwt	844kg 16.6cwt	860kg 16.9cwt	878kg 17.3cwt	954kg 18.8cwt	938kg 18.5cwt
Payload Allowance for Essential Habitation Eqpmnt	82kg 1.6cwt	82kg 1.6cwt	82kg 1.6cwt	74kg 1.5cwt	74kg 1.5cwt	82kg 1.6cwt	74kg 1.5cwt
Payload Allowance for Personal Effects	94kg 1.9cwt	121kg 2.4cwt	102kg 2.0cwt	102kg 2.0cwt	124kg 2.4cwt	137kg 2.7cwt	128kg 2.5cwt
Payload Allowance for Optional Equipment	55kg 1.0cwt	56kg 1.1cwt	55kg 1.1cwt	56kg 1.1cwt	56kg 1.1cwt	57kg 1.1cwt	59kg 1.2cwt
Total User Payload	229kg 4.5cwt	259kg 5.1cwt	239kg 4.7cwt	231kg 4.5cwt	254kg 5.0cwt	278kg 5.5cwt	261kg 5.1cwt

EXTERIOR

- Al-ko galvanised chassis with Euro-axle
- Fully insulated walls, floor and roof to grade II classification of EN1645-1
- Exterior door with window and window blind
- Fitted double glazed windows throughout
- Full height front panel in GRP
- Stylish wheel trims
- Exterior access battery box
- Dedicated gas bottle storage compartment
- Awning light
- Status TV aerial and booster

New for 1999

- NEW Bonded back panel for added rigidity
- NEW More durable ABS hitch cover
- NEW Wrap around rear light cluster with integral warning triangle
- NEW and distinctive Ranger design graphics

ELECTRICAL SYSTEM

- Mains electrics with two 230v sockets
- TV station with 230v/12v/aerial sockets
- 12v and 230v reading lights
- Switch mode battery charger with 12 amps output
- RCD/MCB protection for mains electric system
- 12v fluorescent lighting system
- 25 metre mains connecting lead

HEATING SYSTEM & WATER SYSTEM

- Carver Fanmaster and blown air distribution system
- Inboard pressurised hot and cold fresh water system with re-inforced hosing
- Large size waste outlets routed to rear of tourer
- Fully fitted shower, vanity unit, wall mirrors and integral storage

New for 1999

- NEW Truma 3002 3kw heater as standard
- NEW Truma Ultrastore water heater (gas/electric operation)
- NEW Thetford cassette toilet with integrated header tank (Swivel unit on separate shower washroom models)
- NEW Carver Crystal filtered water inlet with submersible pump

KITCHEN EQUIPMENT

- Large sink/drain in vitreous enamel
- Dedicated cutlery and crockery storage

New for 1999

- NEW Electrolux RM4270 77 litre refrigerator with full width freezer compartment
- NEW Spinflow Caprice combined 4 burner hob/grill and domestic style glass fronted oven plus flame failure device

FURNITURE & SOFT FURNISHINGS

- Free standing table with dedicated storage
- Pull out roller slatted bed
- Fully slatted bed box tops
- Real wood framed locker doors
- Chest of drawers with fold over coffee table
- Interior sprung upholstery and luxury carpet

New for 1999

- NEW 'Denver' velour fabric with matching lined curtains, pelmets and scatter cushions

GENERAL EQUIPMENT

- Flyscreen and sunblind to all principal windows
- Flyscreen and sunblind to 4 way rooftop light in saloon
- Analogue clock

New for 1999

- NEW Full length flyscreen to exterior door

SECURITY

- Selectamark electronic tagging
- Single key operation on all exterior doors
- Vin No. etched to all exterior windows
- Vin No. stamped in chassis member

BED SIZES

- 380/2 - Front saloon 6'8" x 4'7" or 2 @ 6'2" x 2'3"
- 440/4 - Front saloon 6'8" x 4'0" Rear single 6'8" x 2'3", Rear o'head bunk 6'8" x 1'10"
- 450/2 - Front saloon 6'8" x 4'6" or 1 @ 6'2" x 2'3" and 1 @ 6'1" x 2'3"
- 460/2 - Front saloon 6'8" x 4'6" or 2 @ 6'2" x 2'3"
- 470/4 - Front saloon 6'8" x 4'3", Side single 5'7" x 2'1", Side o'head bunk 5'5" x 1'10"
- 500/5 - Front saloon 6'8" x 4'6" or 2 @ 6'1" x 2'3", Rear double 6'8" x 3'11", Rear/side o'head bunk 6'8" x 1'10"
- 510/4 - Front saloon 6'8" x 4'4" or 1 @ 6'1" x 2'3" and 1 @ 6'0" x 2'3" Side single 5'11" x 2'1", Side o'head bunk 5'10" x 1'10"

PAGEANT						
	Majestic	Magenta	Imperial	Auvergne	Champagne	Moselle
Berths	2	2	2	5	4	4
Internal Length	4.115m 13'6"	4.547m 14'11"	4.731m 15'6"	5.258m 17'3"	5.258m 17'3"	5.258m 17'3"
Shipping Length	5.781m 19'0"	6.213m 20'5"	6.397m 21'0"	6.924m 22'9"	6.924m 22'9"	6.924m 22'9"
Overall Width	2.19m 7'2"	2.19m 7'2"	2.19m 7'2"	2.19m 7'2"	2.19m 7'2"	2.19m 7'2"
Overall Height	2.71m 8'10"	2.71m 8'10"	2.71m 8'10"	2.71m 8'10"	2.71m 8'10"	2.71m 8'10"
Internal Headroom	1.90m 6'3"	1.90m 6'3"	1.90m 6'3"	1.90m 6'3"	1.90m 6'3"	1.90m 6'3"
Tyre Sizes	165 R13 6 ply	165 R13 6 ply	165 R13 6 ply	175 R13 6 ply	175 R13 6 ply	175 R13 6 ply
Awning Size (gd to gd)	836cm	873cm	892cm	943cm	943cm	943cm
M.T.P.L.M.	1131kg 22.3cwt	1173kg 23.1cwt	1198kg 23.6cwt	1340kg 26.4cwt	1324kg 26.1cwt	1300kg 25.6cwt
*M.R.O.	870kg 17.1cwt	907kg 17.9cwt	937kg 18.4cwt	1054kg 20.7cwt	1034kg 20.4cwt	1010kg 19.9cwt
Payload Allowance for Essential Habitation Eqpmnt	81kg 1.6cwt	81kg 1.6cwt	73kg 1.4cwt	73kg 1.4cwt	81kg 1.6cwt	73kg 1.4cwt
Payload Allowance for Personal Effects	98kg 1.9cwt	102kg 2.0cwt	104kg 2.0cwt	140kg 2.8cwt	130kg 2.6cwt	130kg 2.6cwt
Payload Allowance for Optional Equipment	82kg 1.6cwt	83kg 1.6cwt	84kg 1.7cwt	65kg 1.3cwt	87kg 1.7cwt	87kg 1.7cwt
Total User Payload	261kg 5.1cwt	266kg 5.2cwt	261kg 5.1cwt	286kg 5.6cwt	290kg 5.7cwt	290kg 5.7cwt

EXTERIOR

- Al-ko galvanised chassis with Euro-axle
- Fully insulated walls, floor and roof to grade II classification of EN1645-1
- Exterior door with window and window blind
- Full height front panel in GRP plastic
- Rear full height acrylic capped A.B.S. panel with twin high level brake lights
- Stylish wheel trims
- Wrap around rear light clusters with integral rear triangle
- Exterior access battery box
- Dedicated gas bottle storage compartment
- Awning light
- Status TV aerial and booster

New for 1999

- NEW Chassis mounted spare wheel carrier
- NEW Polyplastic rounded windows
- NEW Reinforced gas bottle locker swing up lid
- NEW and distinctive design graphics with 3-D Pageant poly-badges

ELECTRICAL SYSTEM

- Mains electrics with three 230v sockets
- TV station with 230v/12v/aerial sockets
- 12v and 230v reading lights
- Switch mode battery charger with 12 amps output
- RCD/MCB protection for mains electric system
- 12v fluorescent lighting system
- 25 metre mains connecting lead
- 230 volt exterior mains socket

HEATING SYSTEM & WATER SYSTEM

- Carver Fanmaster and blown air distribution system
- Inboard pressurised hot and cold fresh water system with re-inforced hosing
- Carver Cascade GE plus Rapide water heater (gas/electric operation)
- Large size waste outlets routed to the rear of tourer
- Fully fitted shower, vanity unit, wall mirrors and integral storage

New for 1999

- NEW Ceramic ball kitchen mixer taps
- NEW Carver 4000 Space heater with automatic ignition and silent running night setting
- NEW Thetford cassette toilet with integrated header tank (Swivel unit on separate shower washroom models)
- NEW Additional washroom storage furniture
- NEW Carver Crystal filtered water inlet with submersible pump

KITCHEN EQUIPMENT

- Electrolux RM 4270 77 litre refrigerator with full width freezer compartment
- Large sink/drain in vitreous enamel
- Dedicated cutlery and crockery storage

New for 1999

- NEW Spinflow Caprice combined 4 burner hob/grill and domestic style glass fronted oven with spark ignition and flame failure device

FURNITURE & SOFT FURNISHINGS

- Free standing table with dedicated storage
- Pull out roller slatted bed
- Fully slatted bed box tops
- Drop down flaps on large bed box fronts
- Real wood framed furniture doors
- Deluxe chest of drawers with fold out table (not Moselle)
- Interior sprung upholstery and deep pile carpet

New for 1999

- NEW Standard 'Begonia' jacquard fabric with matching lined curtains, pelmet covers & bolster cushions

GENERAL EQUIPMENT

- Flyscreen and sunblind to all principal windows
- Flyscreen and sunblind to 4 way rooftop light in saloon
- Full length flyscreen to exterior door
- Fitted doorwell mat
- Analogue clock

SECURITY

- Selectamark electronic tagging
- Single key operation on all exterior doors
- Vin No. etched to all exterior windows
- Vin No. stamped in chassis member

BED SIZES

- Majestic - Front saloon 6'8" x 4'7" or 2 @ 6'2" x 2'3"
- Magenta - Front saloon 6'8" x 4'6" or 1 @ 6'2" x 2'3" and 1 @ 6'1" x 2'3"
- Imperial - Front saloon 6'8" x 4'7" or 2 @ 6'2" x 2'3"
- Auvergne - Front saloon 6'8" x 4'6" or 1 @ 6'2" x 2'3" and 1 @ 6'0" x 2'3"
- Champagne - Front saloon 6'8" x 4'3" Rear o'head bunk 6'8" x 1'10"
- Moselle - Front saloon 6'8" x 4'5", Side single 5'11" x 2'1", Side o'head bunk 5'10" x 1'10"

*MRO INCLUDES SPARE WHEEL CARRIER

SENATOR

	Camargue	Montana	Nevada	California
Berths	4	5	6	4
Internal Length	5.944m 19'6"	5.944m 19'6"	5.944m 19'6"	5.944m 19'6"
Shipping Length	7.610m 25'0"	7.610m 25'0"	7.610m 25'0"	7.610m 25'0"
Overall Width	2.19m 7'2"	2.19m 7'2"	2.19m 7'2"	2.19m 7'2"
Overall Height	2.71m 8'10"	2.71m 8'10"	2.71m 8'10"	2.71m 8'10"
Internal Headroom	1.90m 6'3"	1.90m 6'3"	1.90m 6'3"	1.90m 6'3"
Tyre Sizes	155 R13 4 ply	155 R13 4 ply	155 R13 4 ply	155 R13 4 ply
Awning Size (gd to gd)	1015cm	1015cm	1015cm	1015cm
M.T.P.L.M.	1524kg 30.0cwt	1558kg 30.7cwt	1579kg 31.1cwt	1511kg 29.7cwt
*M.R.O.	1241kg 24.4cwt	1264kg 24.9cwt	1275kg 25.1cwt	1236kg 24.3cwt
Payload Allowance for Essential Habitation Eqpmnt	110kg 2.2cwt	110kg 2.2cwt	110kg 2.2cwt	102kg 2.0cwt
Payload Allowance for Personal Effects	136kg 2.7cwt	146kg 2.9cwt	156kg 3.1cwt	136kg 2.7cwt
Payload Allowance for Optional Equipment	37kg 0.7cwt	38kg 0.7cwt	38kg 0.7cwt	37kg 0.7cwt
Total User Payload	283kg 5.6cwt	294kg 5.8cwt	304kg 6.0cwt	275kg 5.4cwt

*MRO INCLUDES SPARE WHEEL AND CARRIER

EXTERIOR

- Al-ko galvanised chassis with Euro-axle
- Fully insulated walls, floor and roof to grade II classification of EN1645-1
- Exterior door with window and window blind
- Rear full height acrylic capped A.B.S. panel
- Rear roof spoiler with high level brake light
- Stylish wheel trims
- Chassis mounted wheel carrier with spare wheel and tyre
- Exterior access battery box
- Wrap around rear light clusters with integral warning triangle
- Dedicated gas bottle storage compartment
- Awning light
- Status TV aerial and booster

New for 1999

- NEW One piece GRP front panel with elegant high line profile
- NEW Polyplastic rounded windows
- NEW Reinforced gas bottle locker swing up lid
- NEW External gas barbecue point
- NEW Distinguished new gold design graphics with 3-D Senator poly-badges

ELECTRICAL SYSTEM

- Mains electrics with three 230v sockets
- TV station with 230v/12v/aerial sockets
- 12v and 230v reading lights
- Switch mode battery charger with 12 amps output
- RCD/MCB protection for mains electric system
- 25 metre mains connecting lead
- 230 volt exterior mains socket

New for 1999

- NEW Circular halogen ceiling lighting

HEATING SYSTEM & WATER SYSTEM

- Carver Fanmaster and blown air distribution system
- Inboard pressurised hot and cold fresh water system with re-inforced hosing
- Large size waste outlets routed to the rear of tourer
- Carver Cascade GE plus Rapide water heater (gas/electric operation)
- Luxury fully fitted bathroom suite with matching shower, vanity unit, wall mirrors and integral storage
- Roof mounted Electrolux air conditioning unit in all models

New for 1999

- NEW Enhanced blown air heating throughout tourer interior
- NEW Thetford cassette toilet with integral header tank (Swivel unit on separate shower washroom models)
- NEW Additional washroom storage furniture
- NEW Carver Crystal filtered water inlet with submersible pump
- NEW Carver 4000 Space heater with automatic ignition silent running night setting and integrated fanmaster control

KITCHEN EQUIPMENT

- Electrolux RM 4271 86 litre refrigerator with electronic ignition and full width freezer compartment
- Large sink/drain in vitreous enamel
- Colour co-ordinated fold up work tops with finished edges
- Dedicated cutlery and crockery storage
- Kitchen locker mounted exterior fan

New for 1999

- NEW Spinflow Caprice combined 4 burner hob/grill and domestic style glass fronted oven with spark ignition and flame failure device

FURNITURE & SOFT FURNISHINGS

- Free standing table with dedicated storage
- Solid wood ash framed furniture doors
- Pull out roller slatted bed
- Fully slatted bed box tops
- Drop down flaps on large bed box fronts
- Interior sprung upholstery and deep pile padded carpet

New for 1999

- NEW Aircraft style overhead storage lockers
- NEW Standard "Rawhide" fabric with matching lined curtains, pelmets and bolster cushions

GENERAL EQUIPMENT

- Flyscreen and sunblind to all principal windows
- Flyscreen and sunblind to 4 way rooflight in saloon
- Full length flyscreen to exterior door
- Fitted doorwell mat
- Analogue clock

New for 1999

- NEW Stereo CD/Radio

SECURITY

- IDM-2 Security alarm
- Selectamark electronic tagging
- Single key operation on all exterior doors
- Vin No. etched to all exterior windows
- Vin No. stamped in chassis member

BED SIZES

- Camargue - Front saloon 6'8" x 5'5"
- Rear double 6'8" x 4'11"
- Rear o'head bunk 6'8" x 1'10"

- Montana - Front saloon 6'8" x 4'2"
- Rear double 6'8" x 4'11"
- Rear o'head bunk 6'8" x 1'10"

- Nevada - Front saloon 6'8" x 5'3"
- Rear saloon 6'8" x 4'2"
- Or 2 @ 6'2" x 2'3"
- And o'head bunks 2 @ 6'0" x 2'1"

- California - Front saloon 6'8" x 6'2"
- or 2 @ 6'2" x 2'3", Side single 5'11" x 2'1"
- Side o'head bunk 5'10" x 1'10"

(Swivel unit on separate shower washroom models)

KITCHEN EQUIPMENT

- Electrolux RM 4271 86 litre refrigerator with electronic ignition and full width freezer compartment
- Large sink/drain in vitreous enamel
- Colour co-ordinated fold up work tops with finished edges
- Dedicated cutlery and crockery storage
- Spinflow Caprice combined 4 burner hob/grill and domestic style glass fronted oven with spark ignition and flame failure device

FURNITURE & SOFT FURNISHINGS

- Free standing table with dedicated storage
- Solid wood ash framed furniture doors
- Pull out roller slatted bed
- Fully slatted bed box tops
- Drop down flaps on large bed box fronts
- Interior sprung upholstery and deep pile padded carpet
- Aircraft style overhead storage lockers
- Deluxe chest of drawers with fold out table
- 'Darwin' Jaquard fabric with matching lined curtains, pelmets and bolster cushions

GENERAL EQUIPMENT

- Flyscreen and sunblind to all principal windows
- Flyscreen and sunblind to 4 way rooflight in saloon
- Full length flyscreen to exterior door
- Fitted doorwell mat
- Analogue clock
- Stereo CD/Radio

SECURITY

- IDM-2 security alarm
- Selectamark electronic tagging
- Single key operation on all exterior doors
- Vin No. etched to all exterior windows
- Vin No. stamped in chassis member

BED SIZES

- 442 - Front saloon 6'8" x 4'7"
- or 2 @ 6'2" x 2'3"

- 472 - Front saloon 6'8" x 4'6"
- or 1 @ 6'2" x 2'3" and 1 @ 6'0" x 2'3"

- 523 - Front saloon 6'8" x 4'3"
- or 1 @ 6'2" x 2'3" and 1 @ 5'11" x 2'3"
- Side single 5'11" x 2'1"

REGENCY

	442	472	523
Berths	2	2	3
Internal Length	4.394m 14'4"	4.762m 15'6"	5.389m 17'7"
Shipping Length	6.060m 19'10"	6.428m 21'1"	7.055m 23'2"
Overall Width	2.19m 7'2"	2.19m 7'2"	2.19m 7'2"
Overall Height	2.71m 8'10"	2.71m 8'10"	2.71m 8'10"
Internal Headroom	1.90m 6'3"	1.90m 6'3"	1.90m 6'3"
Tyre Sizes	175 R13 6 ply	175 R13 6 ply	185 R13 6 ply
Awning Size (gd to gd)	864cm	895cm	956cm
M.T.P.L.M.	1242kg 24.4cwt	1255kg 24.7cwt	1371kg 27.0cwt
*M.R.O.	973kg 19.1cwt	990kg 19.5cwt	1087kg 21.4cwt
Payload Allowance for Essential Habitation Eqpmnt	110kg 2.2cwt	102kg 2.0cwt	102kg 2.0cwt
Payload Allowance for Personal Effects	101kg 2.0cwt	104kg 2.0cwt	120kg 2.4cwt
Payload Allowance for Optional Equipment	58kg 1.1cwt	59kg 1.2cwt	62kg 1.2cwt
Total User Payload	269kg 5.3cwt	265kg 5.2cwt	284kg 5.6cwt

*MRO INCLUDES SPARE WHEEL AND CARRIER

EXTERIOR

- Al-ko galvanised chassis with Euro-axle
- Fully insulated walls, floor and roof to grade II classification of EN1645-1
- Exterior door with window and window blind
- One piece GRP front panel with elegant high line front
- Polyplastic rounded windows
- Rear full height acrylic capped A.B.S. panel
- Rear roof spoiler with high level brake light
- Exterior access battery box
- Dedicated gas bottle storage compartment with swing up lid
- Awning light
- Status TV aerial and booster
- Stylish wheel trims
- Chassis mounted carrier with spare wheel and tyre
- Wrap around rear light clusters with integral warning triangle
- External gas barbecue point
- Distinguished gold design graphics with 3-D Regency poly-badges

ELECTRICAL SYSTEM

- Mains electrics with three 230v sockets
- TV station with 230v/12v/aerial sockets
- 12v and 230v reading lights
- Switch mode battery charger with 12 amps output
- RCD/MCB protection for mains electric system
- 25 metre mains connecting lead
- 230 volt exterior mains socket
- Circular halogen ceiling lighting

HEATING SYSTEM & WATER SYSTEM

- Carver Fanmaster and blown air distribution system
- Inboard pressurised hot and cold fresh water system with re-inforced hosing
- Carver Crystal filtered water inlet with submersible pump
- Large size waste outlets routed to the rear of tourer
- Carver Cascade GE plus Rapide water heater (gas/electric operation)
- Carver 4000 Space heater with automatic ignition, silent running night setting and fanmaster control
- Luxury fully fitted bathroom suite with matching shower, vanity unit, wall mirrors and integral storage
- Roof light mounted dual control extractor fan
- Roof strengthening and wiring for air conditioning option (air conditioning unit not included)
- Thetford cassette toilet with integral header tank



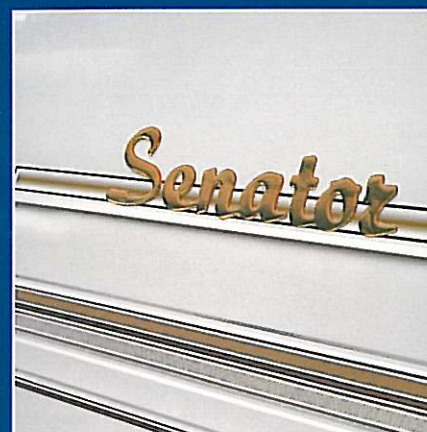
New Spinflow Caprice Hob/Grill/Oven



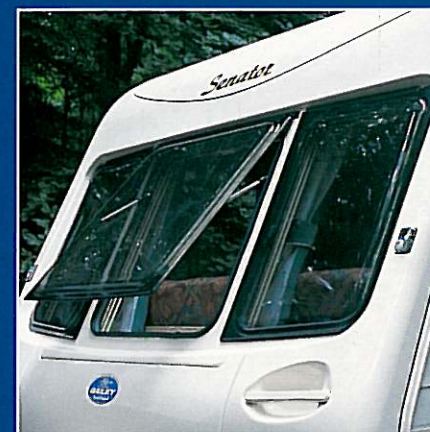
New Carver 4000 Heater - Pageant and Senator



New Chassis Mounted Spare Wheel Carrier - Pageant



New Senator 3-D Graphics



New Polyplastic Rounded Windows - Senator



The IDM-2 Alarm System



Regency 3-D Graphics



New Stereo CD/Radio - Senator and Regency



Electrolux Air Conditioning Unit - Senator



New External Gas Barbeque Point - Senator and Regency



New Aircraft Style Lockers - Senator and Regency



Status TV Aerial



Bailey of Bristol

SOUTH LIBERTY LANE
BRISTOL BS3 2SS
ENGLAND

Your Local Bailey Retailer

Whilst every attempt is made within this brochure to accurately reflect and describe our 1999 model home market tourers (those purchased and stored in the Mainland, and used for leisure purposes) our policy of continued improvement and changes in market and supply conditions mean that we reserve the right to alter specifications without further notice. In this brochure some of the photographs may feature items which are not included in the tourer specification – your Bailey retailer will confirm these and all specification details prior to you making your purchasing decision. Bailey retailers sell our products of their own choice and not as agents of Bailey. They are therefore unable to bind Bailey or make any representation or undertaking whatsoever on behalf of Bailey Caravans Ltd. Colour reproduction is subject to the limitations of the production process. Some materials used in the production of our tourers can result in a variation to the figures quoted in respect of measurements and weights. All data is calculated using metric weights and measurements. The imperial figures quoted are conversions thereof. The tourers in this brochure conform to the European norms EN1645-1, EN1645-2, EN1648-1 & EN721 and to the British Standards for Touring Homes BS5482 (Part II) & BS6765 (Part IV). E & O.E. The touring homes detailed in this brochure are designated by their model year. The model year runs from 1st September to the 31st August. 1999 models are despatched by Bailey to approved retailers from 1st September 1998.

Thanks to the following for their help in producing this brochure: Woodford Lodge Bristol Water, Dickies (UK), Land Rover, Roadford Lake Sailing Club/South West Water, T3 Magazine, Total Bike Magazine and Vauxhall.

Design: TRM Communications, Bristol. Photography: Simon M. Dodd. Print: Lawrence Allen, Weston-super-Mare.