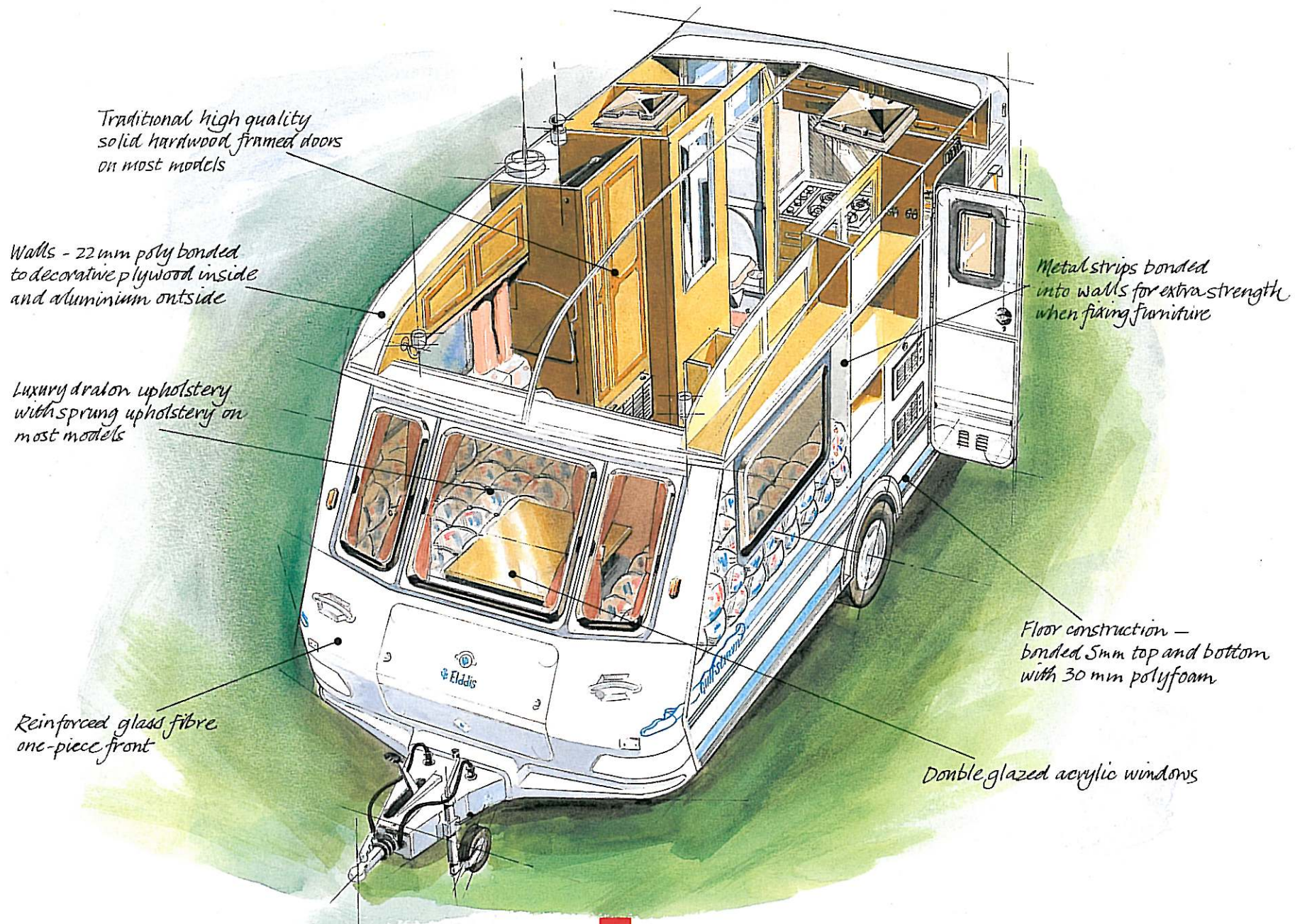


1 9 9 5



The inside story of our success

Elddis - the first 30 years

It was way back in 1965 that we at Elddis began producing our very first caravans. As you will see from this, our latest brochure, caravan designs have come on a very long way in the 30 years since then, and today we are pleased to be able to offer you what we believe are the finest caravans yet to have been created.



You'll find that we have six very different ranges for you to choose from, providing a comprehensive selection which more than caters for every need and every budget. Yet no matter how diverse these ranges may be, one thing is constant throughout them all, and that is the uncompromising quality and attention to detail with which they have been designed, fitted and constructed by our craftsmen.

We are confident, therefore, that as you browse through these pages you will discover that there is a caravan which perfectly matches your requirements.

Life on the range

From our ever-popular first-time buyers' caravan the Wisp, to the Crusader, the ultimate in luxury family caravanning, each of the Elddis ranges offers you an enormous choice of features, fixtures and fittings, many of which are new for 1995.

On the outside, this year's XLi and GTx models also sport newly redesigned fronts to make their sleek contours even more appealing than ever before. And right across the board, our stylish, tasteful graphics ensure that every Elddis caravan makes a real impact wherever it goes. But at the end of the day, it's what you need out of a caravan that will help you decide on one Elddis range or another. Your only real problem will be agreeing on which model you like best.

A name you can depend on

Wherever you see the Elddis name displayed, you can rest assured that you will be talking to a dealer who knows Elddis caravans inside out. That's because we take as much care in choosing our dealers as you do in choosing

your caravan. It's a policy which means we can be absolutely certain you will receive the kind of first-class service that these first-class products deserve - whether it is before, during or after the purchase.

For your added reassurance, every new Elddis caravan comes with a comprehensive 12-month warranty, backed up by an effective and reliable after-sales service. Make sure you ask for details as it will be your key to many, many years of carefree caravanning.

There's no substitute for the real thing

By the time you have finished perusing this brochure, you will no doubt have a good idea as to which Elddis caravan is best-suited to your

own personal needs. There is, however, nothing quite like taking a good long look at the real thing to be sure. So when you're done, take a trip to your local Elddis dealer soon and prepare to be amazed.



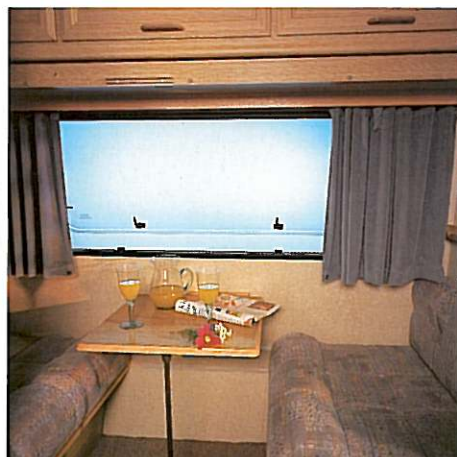
The Wisp Range



"We've discovered a whole new world."



The outstanding Elddis Wisp range has been designed with those buying their first caravan very much in mind. With a high level of specification as standard, these superb models offer a cosy and comfortable environment from which you can begin to discover the true joy of caravanning. Their beautifully co-ordinated interiors, for instance, contain everything you could possibly need to get started, while their elegantly liveried exteriors bear testimony to the superior styling and attention to detail which is an inherent part of every Elddis caravan.



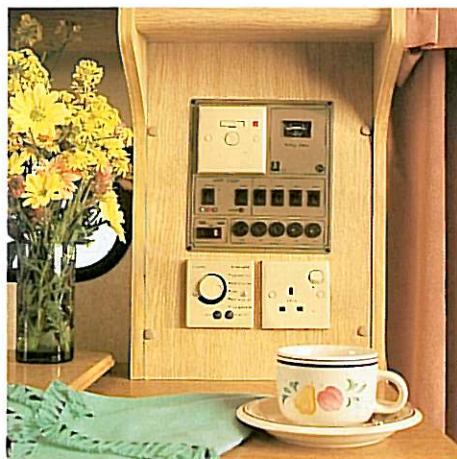
The Élusion Range



"Stunning - whichever way you look at it."



Every one of the caravans in the Elddis Éclusion range has been tailor-made to bring you unbeatable value for money, with a whole host of very special features included in each of their extremely competitive prices. For example, items such as water heaters and showers, cassette toilets and mains chargers are all fitted as standard, as is a superbly equipped kitchen, complete with its own larger-than-average fridge. Take a look at the specification page, however, and you'll soon see that these are just a few of the dozens of details which together make the Elddis Éclusion one of the most affordable and desirable caravans available today.



The XLi Range

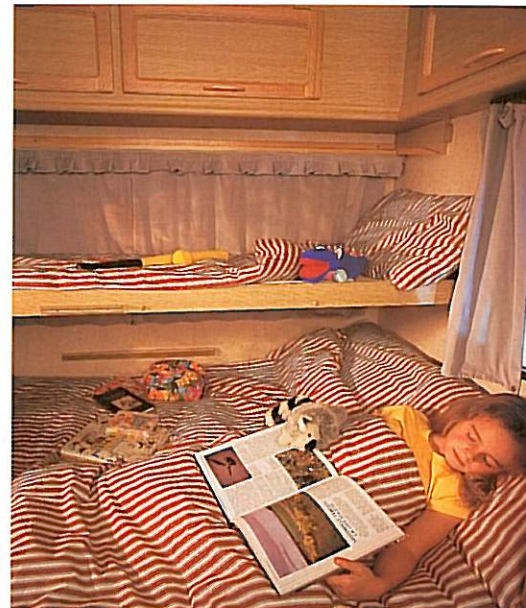
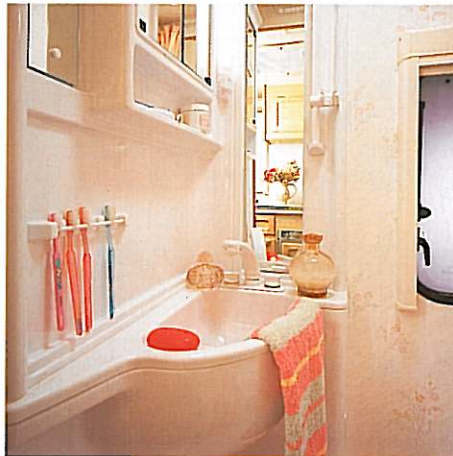


"A real sense of space and freedom."



The eight stunning models in the Elddis XLi range offer you not only incredibly high standards of comfort and luxury - the sprung interior upholstery and hardwood door frames are perfect examples - but also the freedom to choose a design which caters perfectly for your own individual caravanning needs.

On the interior, you will discover that each XLi is slightly different to the others, either in its layout or the particular features which it contains. While on the exterior, every Elddis XLi now boasts an innovatively reshaped front, new for 1995. Whichever model you decide upon, though, you can be sure that you are buying one of the finest caravans on the market.



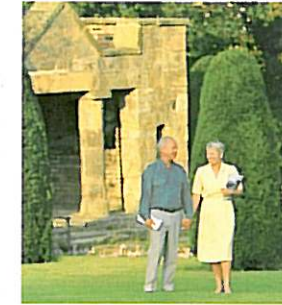
The Elf and Tynedale



"When we're away, there's no better place to stay."



Elf kitchen



New for 1995 come two very special additions to the Elddis range - The Elf and a new model Tynedale. The Tynedale is perfect for anyone who wishes to move up to a twin-axle caravan, or is looking for a twin-axle model that provides outstanding value for money. The Elf, however, is ideal for those who require a more compact caravan, but still demand that the finest equipment and features are included.

In either case, it goes without saying that in both these Specials you will find the quality and craftsmanship which is at the heart of each and every Elddis caravan.



Tynedale kitchen



The GTx Range



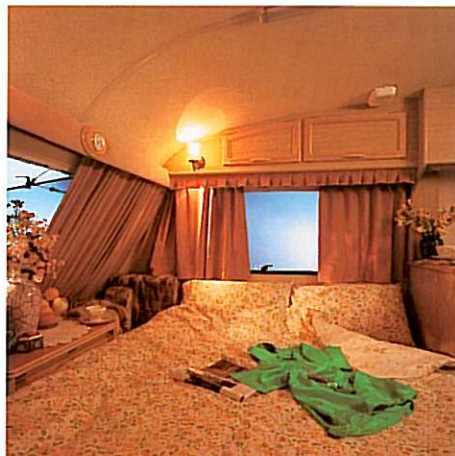
"Wherever we go, we always feel right at home."



Spacious, comfortable and equipped to an incredibly high level of specification, our stunning GTx range is ideally suited for those who demand the best when they take a caravan on the open road.

As with our XLi range, the new 1995 Eddis GTx caravans all sport a stylishly remodelled front, while on the inside a selection of new upholstery fabrics bring an added dimension to the luxurious accommodation.

With six models and seven layouts for you to choose from, the Eddis GTx is sure to appeal to everyone who takes both their caravanning and, more importantly, their creature comforts seriously.



The Crusader Range

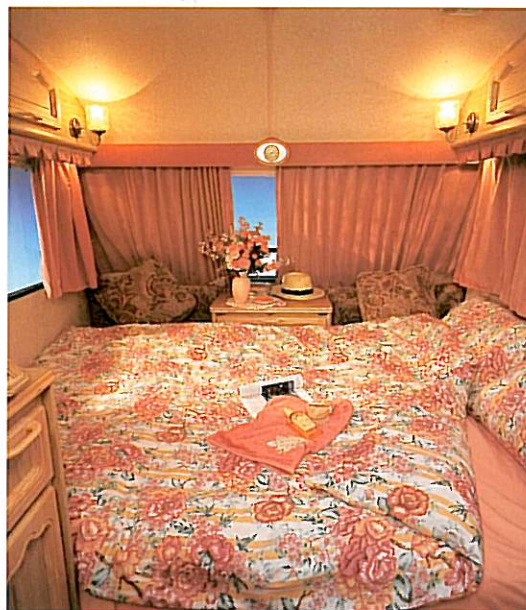


"It's the ultimate, however far you go."



Take one look at the Elddis Crusader range and you'll see why these magnificent caravans are regarded as the undisputed kings of the open road.

All three models provide breathtaking luxury, and what can only be described as palatial living accommodation. To ensure that you can enjoy year-round comfort, there's full blown-air central heating and air conditioning is also an available option. The fitted kitchen has been designed to provide you with every conceivable facility and the sleeping quarters are guaranteed to make you feel right at home - no matter how far you may actually roam.



Wisp Specification

EXTERIOR Profiled aluminium exterior • Aerodynamic shaped front with integral handles • Pre-painted striped aluminium panels with attractive coachlines • New exterior colours and graphics • Lightweight chassis • A-frame fairing • Front skirts • Awning rail and skirt rail • Bolt-on wheel trims • Laminated lightweight wall and floor construction • High level marker lights (450/510 only) • Front reflectors • Lockable front storage compartment • Battery compartment • Lockable corner steadies • 20m mains hook-up lead • Window in shower compartment • Single key locking

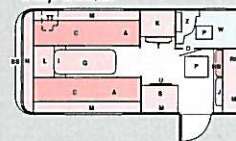
INTERIOR Traditional Elldis quality furniture • Luxury dralon upholstery and soft furnishings including velvet curtains and scatter cushions • TV shelf in some models • Slatted pull-out bed • Hinged kitchen worktops • Colour co-ordinated sink and drainer • 3 burner hob and grill as standard with FFD • Glass lid to cooker • Light over cooker • Electrolux RM4207 60 litre refrigerator • Vanity unit • Mains input • Electrics distribution panel • 13amp sockets and 12v distribution system • Flued space heater • Double glazed roof light • Roller blind to kitchen window • Blinds and flyscreens can be fitted as an optional extra

Model	350/2	450/CT	510/5
No. of Berths	2	4	5
Body Length	3605mm (11' 10")	4454mm (14' 7")	5047mm (16' 6 1/2")
Shipping Length	5043mm (16' 6 1/2")	5892mm (19' 4")	6485mm (21' 3")
Overall Width	2083mm (6' 10")	2184mm (7' 2")	2184mm (7' 2")
Overall Height	2394mm (7' 10 1/4")	2420mm (7' 11 1/2")	2420mm (7' 11 1/2")
Max Headroom	1867mm (6' 1 1/2")	1867mm (6' 1 1/2")	1867mm (6' 1 1/2")
Interior Width	1931mm (6' 4")	2032mm (6' 8")	2032mm (6' 8")
Wheel Rim	4 1/2J 13	5J 13	5J 13
Tyre Size	155 RR13/165 SR13	SUPERVAN 175C	SUPERVAN 175C
Tyre Pressure	42 PSI/36 PSI	44 PSI	51 PSI
Brake Size	1637	2051	2051
Hitch Ball Height Fully Laden	411mm	426mm	426mm
Awning Sizes Ground to Ground	7460mm	8330mm	8950mm
Bed Sizes: Option 1	1 x Single 6'0" x 2'2 1/2" 1 x Single 5'11" x 2'2 1/2"	2 x Single 6'1" x 2'3 1/2" 1 x Single 6'8" x 2'3" 1 x Single 6'7" x 1'11"	2 x Single 6'2" x 2'3 1/2" 1 x Double 6'8" x 4'0" 1 x Single 6'7" x 1'11"
Bed Sizes: Option 2	1 x Double 6'2" x 4'8"	1 x Double 6'8" x 4'11" 1 x Single 6'8" x 2'3" 1 x Single 6'7" x 1'11"	1 x Double 6'8" x 4'9" 1 x Double 6'8" x 4'0" 1 x Single 6'7" x 1'11"
Max Authorised Wt Kgs (cwt)	900 (17.7)	1060 (20.8)	1180 (23.2)
Ex Works Wt Kgs (cwt)	659 (12.9)	806 (15.9)	892 (17.5)
Caravan allowable Payload Min Kgs (cwt)	216 (4.2)	229 (4.5)	263 (5.2)
Caravan allowable Payload Max Kgs (cwt)	241 (4.7)	254 (5.0)	288 (5.7)

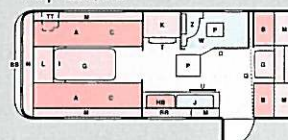
1995 Wisp Range Floor Plan Key

- A DINETTE/DOUBLE BED
- B DINETTE/SINGLE BED WITH BUNK OVER
- BB GAS BOTTLE LOCKER
- C SINGLE BED
- F DINETTE/DOUBLE BED WITH BUNK OVER
- G TABLE
- GG TABLE STORAGE UNIT
- HB 3 BURNER HOB & GRILL
- I PULL-OUT BED
- J SINK & DRAINER
- K WARDROBE
- L CHEST OF DRAWERS
- M WALL LOCKERS
- N SHELF
- O TOILET COMPARTMENT
- P ROOFLIGHT
- Q DIVIDING CURTAIN
- RR CROCKERY LOCKER
- S CUPBOARD
- T HEATER
- TT BATTERY BOX
- U FRIDGE
- W SHOWER TRAY
- X FOLDING DOOR
- Z VANITY UNIT

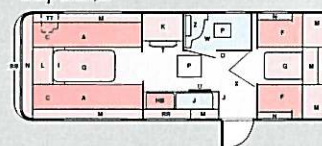
Wisp 350/2



Wisp 450/CT



Wisp 510/5



Élusion Specification

EXTERIOR Profiled aluminium exterior • Aerodynamic shaped front with integral handles • Pre-painted striped aluminium panels with attractive coachlines • New exterior colours and graphics • Lightweight chassis • A-frame fairing • Front skirts • Awning light, rail and skirt rail • Bolt-on wheel trims • Laminated lightweight wall and floor construction • High level marker lights (not 350/2) • Front reflectors • Lockable front storage compartment • Battery compartment • Lockable corner steadies • 20m mains hook-up lead • Window in door with blind • Window in shower compartment • Single key locking

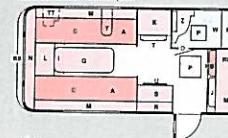
INTERIOR Traditional Elldis quality furniture • Luxury dralon upholstery and soft furnishings including velvet curtains and scatter cushions • TV shelf in some models • Upholstered pelmet with clock • Slatted pull-out bed • Hinged kitchen worktops • Colour co-ordinated sink and drainer • 3 burner hob and grill as standard with FFD • Glass lid to cooker • Light over cooker • Electrolux RM4236 70 litre refrigerator • Carver Cascade gas/electric hot water system and shower • Vanity unit • Thetford cassette toilet • Mains input • Electrics distribution panel • 13 amp sockets and 12v distribution system • Mains charging unit • Flued space heater • Double glazed roof light • Roller blind to kitchen window and door • Blinds and flyscreens fitted to nearside and offside front dinette windows

Model	350/2	420/4	450/CT	470/2	510/5	510/6	520/4
No. of Berths	2	4	4	2	5	6	4
Body Length	3605mm (11'10")	4206mm (13'9 1/2")	4454mm (14'7")	4552mm (14'11")	5047mm (16'6 1/2")	5047mm (16'6 1/2")	5047mm (16'6 1/2")
Shipping Length	5058mm (16'7")	5661mm (18'6 1/2")	5907mm (19'4 1/2")	5995mm (19'8")	6500mm (21'3 1/2")	6500mm (21'3 1/2")	6500mm (21'3 1/2")
Overall Width	2083mm (6'10")	2184mm (7'2")	2184mm (7'2")	2184mm (7'2")	2184mm (7'2")	2184mm (7'2")	2184mm (7'2")
Overall Height	2394mm (7'10 1/4")	2410mm (7'11")	2420mm (7'11 1/2")	2420mm (7'11 1/2")	2420mm (7'11 1/2")	2420mm (7'11 1/2")	2420mm (7'11 1/2")
Max Headroom	1867mm (6'1 1/2")	1867mm (6'1 1/2")	1867mm (6'1 1/2")	1867mm (6'1 1/2")	1867mm (6'1 1/2")	1867mm (6'1 1/2")	1867mm (6'1 1/2")
Interior Width	1931mm (6'4")	2032mm (6'8")	2032mm (6'8")	2032mm (6'8")	2032mm (6'8")	2032mm (6'8")	2032mm (6'8")
Wheel Rim	4 1/2J 13	4 1/2J 13	5J 13	4 1/2J 13	5J 13	5J 13	5J 13
Tyre Size	155 RR13/165 SR13	165 RR13/175 SR13	SUPERVAN 175C	165 RR13/175 SR13	SUPERVAN 175C	SUPERVAN 175C	SUPERVAN 175C
Tyre Pressure	42 PS I/36 PS I	45 PS I/36 PS I	44 PS I	45 PS I/36 PS I	51 PS I	51 PS I	51 PS I
Brake Size	1637	2051	2051	2051	2051	2051	2051
Hitch Ball Height Fully Laden	411mm	426mm	426mm	426mm	426mm	426mm	426mm
Awning Sizes Ground to Ground	7460mm	8050mm	8330mm	8428mm	8950mm	8950mm	8950mm
Bed Sizes: Option 1	1 x Single 6'0" x 2'3 1/2" 1 x Single 5'11" x 2'1 1/2"	1 x Double 6'8" x 3'9 1/4" 1 x Single 6'2" x 3'8"	2 x Single 6'1" x 2'3 1/2" 1 x Single 6'8" x 2'3" 1 x Single 6'7" x 1'11"	1 x Single 6'2" x 2'3 1/2" 1 x Single 6'1" x 2'2 1/2"	2 x Single 6'2" x 2'3 1/2" 1 x Single 6'7" x 1'11" 1 x Double 6'8" x 4'0"	1 x Double 6'8" x 4'5" 2 x Single 6'0" x 2'3 1/2" 2 x Single 5'11" x 1'10"	1 x Single 6'2" x 2'3 1/2" 1 x Single 6'0" x 2'4 1/2" 2 x Single 6'0" x 2'0"
Bed Sizes: Option 2	1 x Double 6'4" x 4'8"		1 x Double 6'8" x 4'11" 1 x Single 6'8" x 2'3" 1 x Single 6'8" x 1'11"	1 x Double 6'8" x 4'8"	1 x Double 6'8" x 4'9" 1 x Double 6'8" x 4'0" 1 x Single 6'7" x 1'11"		1 x Double 6'8" x 4'8" 2 x Single 6'0" x 2'0"
Max Authorised Wt Kgs (cwt)	900 (17.7)	1000 (19.7)	1080 (21.2)	1060 (20.9)	1180 (23.2)	1180 (23.2)	1150 (22.6)
Ex Works Wt Kgs (cwt)	694 (13.7)	769 (15.1)	841 (16.5)	818 (16.1)	927 (18.3)	918 (18.0)	896 (17.6)
Caravan allowable Payload Min Kgs (cwt)	181 (3.6)	206 (4.0)	214 (4.2)	217 (4.3)	228 (4.5)	237 (4.7)	229 (4.5)
Caravan allowable Payload Max Kgs (cwt)	206 (4.0)	231 (4.6)	239 (4.7)	242 (4.7)	253 (5.0)	262 (5.1)	254 (5.0)

1995 Élusion Range Floor Plan Key

- A DINETTE/DOUBLE BED
- B DINETTE/SINGLE BED WITH BUNK OVER
- BB GAS BOTTLE LOCKER
- C SINGLE BED
- F DINETTE/DOUBLE BED WITH BUNK OVER
- G TABLE
- GG TABLE STORAGE UNIT
- HB 3 BURNER HOB & GRILL
- I PULL-OUT BED
- J SINK & DRAINER
- K WARDROBE
- L CHEST OF DRAWERS
- M WALL LOCKERS
- N SHELF
- O TOILET COMPARTMENT
- P ROOFLIGHT
- PP PORTA POTTI
- Q DIVIDING CURTAIN
- R COCKTAIL CABINET
- RR CROCKERY LOCKER
- S CUPBOARD
- T HEATER
- TT BATTERY BOX
- U FRIDGE
- W SHOWER
- X FOLDING DOOR
- Y WATER HEATER
- Z VANITY UNIT
- ZZ SHOWER/DRESSING ROOM

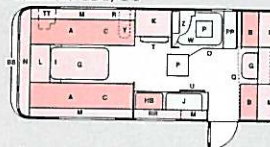
Élusion 350/2



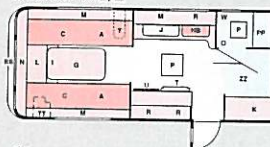
Élusion 420/4



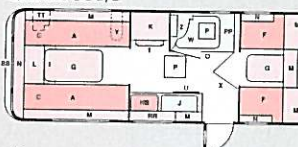
Élusion 450/CT



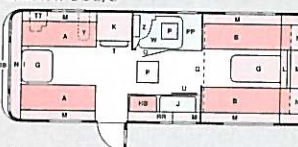
Élusion 470/2



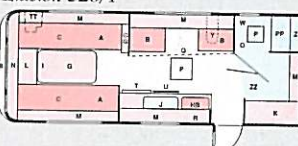
Élusion 510/5



Élusion 510/6



Élusion 520/4



XLi Specification

EXTERIOR Aerodynamic shaped front with integral handles • Pre-painted striped aluminium panels with attractive coachlines • New exterior colours and graphics • Boat shaped fully insulated roof • Lightweight galvanised chassis • A-frame fairing • Complete skirts • Awning light, rail and skirt rail • Colour co-ordinated bolt-on wheel trims • Laminated lightweight wall and floor construction • Moulded one-piece wraparound rear light panel • Reversing light • High level marker lights • Front reflectors • Lockable front storage compartment with spring assisted door • Battery compartment • Lockable corner steadies • 20m mains hook-up lead • Double glazed opening windows throughout • Window in door • Window in shower compartment • Single key locking

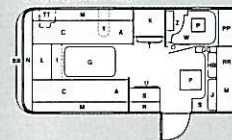
INTERIOR Traditional Elddis quality furniture • Luxury dralon upholstery and soft furnishings including velvet curtains and scatter cushions • Sprung interior upholstery including backrests • Hardwood framed cabinet doors • Free standing dining table • Small occasional table on some models • Table storage areas and cupboards • TV aerial socket • TV shelf in some models • Recessed reading lights • Cocktail cabinet • Upholstered front pelmet with clock • Removable soft pleated pelmets • Vitreous enamel sink and drainer • 3 burner hob and grill with FFD • Sliding rack with wire storage baskets (selected models) • Electrolux RM4236 70 litre refrigerator • Carver Cascade gas/electric water system and shower • Carver Fanmaster blown air ducted heating • Vanity unit • Thetford cassette toilet • Mains input with charger converter • Electrics distribution panel • 13 amp sockets • Cassette blinds and flyscreens to all windows

Model	Whirlwind	Gulfstream	Tornado	Hurricane	Shamal	Jetstream	Typhoon	Cyclone
No. of Berths	2	2	4	2	4	4	4	5
Body Length	3782mm (12'5")	4306mm (14'1")	4552mm (14'11")	4552mm (14'11")	4552mm (14'11")	5047mm (16'7")	5047mm (16'7")	5047mm (16'7")
Shipping Length	5225mm (17'2")	5749mm (18'10")	5995mm (19'8")	5995mm (19'8")	5995mm (19'8")	6490mm (21'4")	6490mm (21'4")	6490mm (21'4")
Overall Width	2184mm (7'2")	2184mm (7'2")	2184mm (7'2")	2184mm (7'2")	2184mm (7'2")	2184mm (7'2")	2184mm (7'2")	2184mm (7'2")
Overall Height	2464mm (8'1")	2464mm (8'1")	2474mm (8'1 1/2")	2474mm (8'1 1/2")	2474mm (8'1 1/2")	2474mm (8'1 1/2")	2474mm (8'1 1/2")	2474mm (8'1 1/2")
Max Headroom	1905mm (6'3")	1905mm (6'3")	1905mm (6'3")	1905mm (6'3")	1905mm (6'3")	1905mm (6'3")	1905mm (6'3")	1905mm (6'3")
Interior Width	2032mm (6'8")	2032mm (6'8")	2032mm (6'8")	2032mm (6'8")	2032mm (6'8")	2032mm (6'8")	2032mm (6'8")	2032mm (6'8")
Wheel Rim	4 1/2 J 13	5J 13	5J 13	5J 13	5J 13	5J 13	5J 13	5J 13
Tyre Size	165HR/175SR	SUPERVAN 175C	SUPERVAN 175C	SUPERVAN 175C	SUPERVAN 175C	SUPERVAN 175C	SUPERVAN 175C	SUPERVAN 175C
Tyre Pressure	45 P.S.I./36 P.S.I	44 P.S.I	47 P.S.I	44 P.S.I	47 P.S.I	51 P.S.I	51 P.S.I	51 P.S.I
Brake Size	2005 5	2005 5	2005 5	2005 5	2005 5	2005 5	2005 5	2005 5
Hitch Ball Height Fully Laden	421mm	425mm	436mm	436mm	436mm	433mm	433mm	433mm
Awning Sizes Ground to Ground	7510mm	8150mm	8360mm	8360mm	8360mm	8855mm	8855mm	8855mm
Bed Sizes: Option 1	1 x Single 6'2" x 2'3 1/2" 1 x Single 6'0" x 2'3 1/2"	1 x Single 6'1 1/2" x 3'8" 1 x Single 5'11" x 2'3 1/2"	1 x Double 6'1 1/2" x 3'8" 1 x Single 6'2" x 2'3 1/2" 1 x Single 5'6" x 2'3 1/2"	1 x Single 6'2" x 2'3 1/2" 1 x Single 6'1" x 2'3 1/2"	2 x Single 6'2" x 2'3 1/2" 1 x Single 6'8" x 2'3" 1 x Single 6'8" x 2'0"	1 x Single 6'2" x 2'3 1/2" 1 x Single 5'11" x 2'3 1/2" 2 x Single 6'0" x 2'0"	1 x Single 6'2" x 2'3 1/2" 1 x Single 6'0" x 2'3 1/2" 2 x Single 6'0" x 2'0"	1 x Double 6'6" x 4'0" 2 x Single 6'2" x 2'3 1/2" 1 x Single 6'8" x 1'10 1/2"
Bed Sizes: Option 2	1 x Double 6'8" x 4'8"	1 x Double 6'8" x 4'8"	1 x Double 6'8" x 4'8" 1 x Double 6'1 1/2" x 3'8"	1 x Double 6'8" x 4'8"	1 x Double 6'8" x 4'8" 2 x Single 6'8" x 2'3" 1 x Single 6'8" x 2'0"	1 x Double 6'8" x 4'8" 2 x Single 6'0" x 2'0"	1 x Double 6'6" x 4'8" 2 x Single 6'0" x 2'0"	1 x Double 6'6" x 4'8" 1 x Double 6'6" x 4'0" 1 x Single 6'8" x 1'10 1/2"
Max Authorised Wt Kgs (cwt)	1000 (19.7)	1100 (21.7)	1150 (22.6)	1100 (21.7)	1150 (22.6)	1250 (24.6)	1200 (23.6)	1250 (24.6)
Ex Works Wt Kgs (cwt)	798 (15.7)	861 (16.9)	874 (17.2)	885 (17.4)	907 (17.8)	968 (19.0)	957 (18.8)	993 (19.6)
Caravan allowable Payload Min Kgs (cwt)	171 (3.4)	214 (4.2)	251 (4.9)	190 (3.7)	218 (4.2)	257 (5.0)	218 (4.2)	232 (4.6)
Caravan allowable Payload Max Kgs (cwt)	196 (3.8)	239 (4.7)	276 (5.4)	215 (4.2)	243 (4.8)	282 (5.6)	243 (4.8)	257 (5.0)

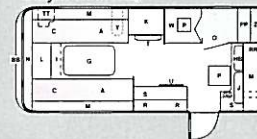
1995 XLi Range Floor Plan Key

- A DINETTE/DOUBLE BED
- B DINETTE/SINGLE BED WITH BUNK OVER
- BB GAS BOTTLE LOCKER
- C SINGLE BED
- F DINETTE/DOUBLE BED WITH BUNK OVER
- G TABLE
- GG TABLE STORAGE UNIT
- HB 3 BURNER HOB & GRILL
- I PULL-OUT BED
- J SINK & DRAINER
- K WARDROBE
- L CHEST OF DRAWERS
- M WALL LOCKERS
- N SHELF
- O TOILET COMPARTMENT
- P ROOFLIGHT
- PP PORTA POTTI
- Q DIVIDING CURTAIN
- R COCKTAIL CABINET
- RR CROCKERY LOCKER
- S CUPBOARD
- T HEATER
- TT BATTERY BOX
- U FRIDGE
- W SHOWER
- X FOLDING DOOR
- Y WATER HEATER
- Z VANITY UNIT
- ZZ SHOWER DRESSING ROOM

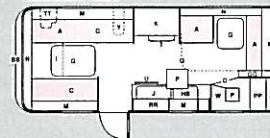
Whirlwind XLi



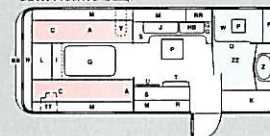
Gulfstream XLi



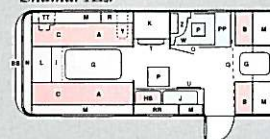
Tornado XLi



Hurricane XLi



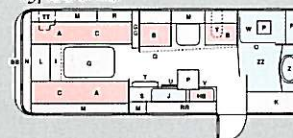
Shamal XLi



Jetstream XLi



Typhoon XLi



Cyclone XLi



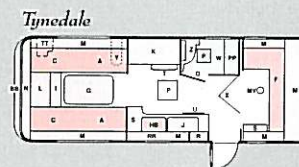
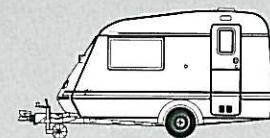
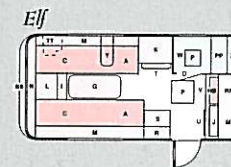
Elf/Tynedale Specification

EXTERIOR Aerodynamic shaped front with integral handles • Pre-painted striped aluminium panels with attractive coachlines • New exterior colours and graphics • Lightweight galvanised chassis • Twin axle (Tynedale only) • Front panel with 3 opening windows • A-frame fairing • Complete skirts • Awning light, rail and skirt rail • Colour co-ordinated bolt-on wheel trims • Laminated lightweight wall and floor construction • Moulded one-piece wraparound rear light panel • Reversing light • High level marker lights (Tynedale only) • Front reflectors • Lockable front storage compartment with spring assisted door • Battery compartment • Lockable corner steadies • 20m mains hook-up lead • Double glazed opening windows throughout • Window in door • Window in shower compartment • Single key locking

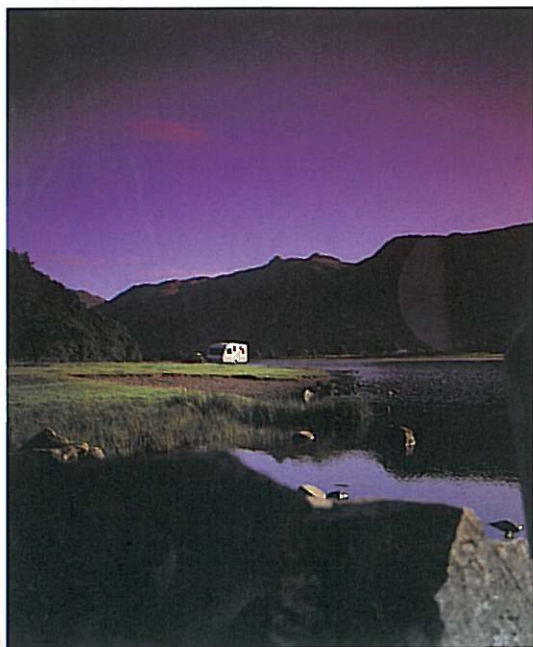
INTERIOR Traditional Elldis quality furniture • Luxury dralon upholstery and soft furnishings including velvet curtains and bolster cushions • Sprung upholstery including backrests • Hardwood framed cabinet doors • Free standing dining table (Tynedale only) • Quality carpets • Table storage areas and cupboards • TV aerial socket • TV shelf • Recessed reading lights • Mains spot lights (Elf only) • Cocktail cabinet • Upholstered front pelmet with clock • Removable soft pleated pelmets • Vitreous enamel sink and drainer • Spin-flo oven (Elf only) • 3 burner hob and grill with FFD (Elf has 4 burner hob) • Extractor fan (Elf only) • Additional pull-out worktops (Elf only) • Sliding rack with wire storage baskets • Electrolux RM4236 70 litre refrigerator (Tynedale) • Electrolux RM4270 77 litre refrigerator (Elf) • Carver Fanmaster blown air ducted heating • Carver Cascade gas/electric water heater • Fully fitted shower unit • Vanity unit • Thetford cassette toilet • Mains input with charger converter • Electrics distribution panel • 13 amp sockets • Cassette blinds and fly screens to all windows

Model	Elf	Tynedale
No. of Berths	2	5
Body Length	3542mm (11'7 1/4")	5347mm (17'6")
Shipping Length	4980mm (16'4")	6785mm (22'2 1/2")
Overall Width	1980mm (6'6")	2184mm (7'2")
Overall Height	2440mm (8'0")	2420mm (7'11 1/2")
Max Headroom	1867mm (6'1 1/2")	1867mm (6'1 1/2")
Interior Width	1831mm (6'0")	2032mm (6'8")
Wheel Rim	4 1/2J 13	4 1/2J 13
Tyre Size	155 RR 13/165 SR 13	155 SR13
Tyre Pressure	42 P.S.I./36 P.S.I	36 P.S.I
Brake Size	1637	1637
Hitch Ball Height Fully Laden	415mm	415mm
Awning Size: Ground to Ground	7397mm	9250mm
Bed Sizes: Option 1	1 x Single 6'2" x 2'0 1/2" 1 x Single 5'10" x 2'0 1/2"	1 x Double 6'0" x 4'0" 2 x Single 6'2" x 2'3 1/2" 1 x Single 6'8" x 1'10 1/2"
Bed Sizes: Option 2	1 x Double 6'0" x 4'7"	1 x Double 6'8" x 4'8" 1 x Double 6'0" x 4'0" 1 x Single 6'8" x 1'10 1/2"
Max Authorised Wt Kgs (cwt)	900 (17.7)	1420 (27.9)
Ex Works Wt Kgs (cwt)	718 (14.1)	1096 (21.6)
Caravan allowable Payload Min Kgs (cwt)	157 (3.0)	299 (5.9)
Caravan allowable Payload Max Kgs (cwt)	182 (3.6)	324 (6.3)

1995 Elf/Tynedale Range Floor Plan Key



- A DINETTE/DOUBLE BED
- BB GAS BOTTLE LOCKER
- C SINGLE BED
- F DINETTE/DOUBLE BED WITH BUNK OVER
- G TABLE
- HB 3 BURNER HOB & GRILL
- I PULL-OUT BED
- J SINK & DRAINER
- K WARDROBE
- L CHEST OF DRAWERS
- M WALL LOCKERS
- MV MUSHROOM VENT
- N SHELF
- O TOILET COMPARTMENT
- P ROOFLIGHT
- PP PORTA POTTI
- R COCKTAIL CABINET
- RR CROCKERY LOCKER
- S CUPBOARD
- T HEATER
- TT BATTERY BOX
- U FRIDGE
- V OVEN
- W SHOWER
- X FOLDING DOORS
- Y WATER HEATER
- Z VANITY UNIT



Special features for 1995

To help celebrate Eddis Caravans' first 30 years, we have incorporated a whole host of special features into our 1995 models.

For example, you'll discover pull-down kitchen shelves, door fly screens, TV shelves, thoughtful siting of electric controls and sockets, light switches which have been conveniently located closer to the doors and much, much more.

Indeed, throughout these pages you will find that wherever we have been able to make improvements we have done so, and that our unrivalled attention to detail has resulted in some of the most luxurious yet practical caravan designs ever to grace the highways. We very much hope that you will enjoy them.



Sprung upholstery



Folding worktop extension



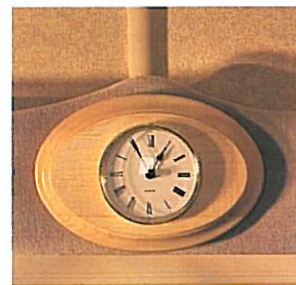
TV shelf



Luxurious armrests



Cocktail cabinet



Quartz clock



Colour co-ordinated oven,
hob and sink



Pull-down shelf in kitchen



Carver Fanmaster heater



Electric distribution console



Flush socket edging



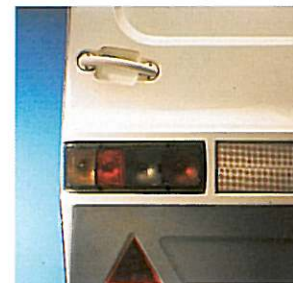
Light switch by door



Fly screen on door



Spring assisted locker door

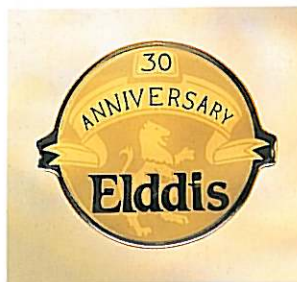


Re-designed rear light cluster



Stylish modern graphics





30th Anniversary badging



Slatted bed tops



Pull-out worktops



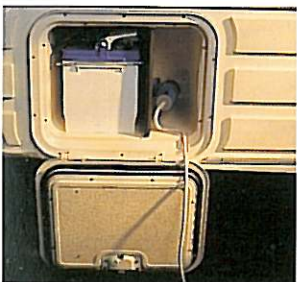
Crockery tidy



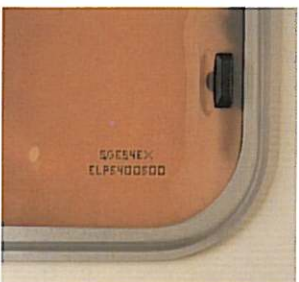
Wire storage baskets



Table storage areas



Exterior battery box



Security etching to windows

Range Checklist

	WISP	ÉLUSION	XLI	ELF	TYNEDALE	GTx	CRUSADER
Aerodynamic shaped front with integral handles	●	●	●	●	●	●	●
New exterior colours and graphics	●	●	●	●	●	●	●
Front panel with three opening windows	●	●	●	●	●	●	●
Boat shaped fully insulated roof			●			●	●
GRP rear panel and roof spoiler						●	
Twin Axle					●		●
Awning light, rail and skirt rail		●	●	●	●	●	●
Colour co-ordinated bolt-on wheel trims	●	●	●	●	●	●	●
Moulded one-piece wraparound rear light panel		●	●	●	●		●
Reversing lights			●	●	●	●	●
Lockable front storage compartment with spring assisted door			●		●	●	●
Lockable front storage compartment	●	●		●			
Lockable battery compartment	●	●	●	●	●	●	●
Lockable corner steadies	●	●	●	●	●	●	●
Roof mounted TV aerial with booster				●		●	●
Window in door with blind		●	●	●	●	●	●
Window in shower compartment	●	●	●	●	●	●	●
Single key locking	●	●	●	●	●	●	●
Sprung interior upholstery			●	●	●	●	●
Hardwood framed doors			●	●	●	●	●
Free standing dining table		●	●	●	●	●	●
TV shelf (Some models)	●	●	●	●	●	●	●
12v TV socket and aerial socket		●	●	●	●	●	●
Mains lights				●		●	●
12v reading lights			●	●	●	●	●
Cocktail cabinet with light						●	●
Upholstered pelmet with clock		●	●	●	●	●	●
Spin-flo thermostatic oven				●		●	●
3 burner hob & grill with colour co-ordinated sink & drainer	●	●	●		●		
4 burner hob with FFD, oven and grill				●		●	●
Glass lid to cooker	●	●	●	●	●	●	●
Pull down kitchen shelf (Some models)			●	●	●	●	●
Extractor fan				●		●	●
Electrolux refrigerator (Litres)	60	70	70	77	70	70	70
Carver Fanmaster blown air ducted heating			●	●	●	●	●
Carver Cascade gas/electric hot water system and shower		●	●	●	●	●	●
Shower tray and vanity unit	●	●	●	●	●	●	●
In-board water tank with waterlevel indicator							●
Mains input with charger converter	○	●	●	●	●	●	●
Electrics distribution panel	●	●	●	●	●	●	●
13 amp sockets			●	●	●	●	●
Courtesy light to doorway	○	○	○	○	○	●	●
Cassette blinds and flyscreens	○	○	●	●	●	●	●
Flyscreens to door	○	○	○	○	○	●	●

● Standard ○ Optional

If you require finance to help pay for your caravan,
Elddis have established a strong relationship with
NWS Caravan Finance - a part of the
Bank of Scotland Group. They can arrange credit
facilities of up to £15,000. Details are available upon
request from your Elddis dealer, or from
NWS BANK plc, NWS House, City Road, Chester X,
CH99 3AN.

The content of this publication is as accurate as possible
from information available at the time of going to print
(October 1994).

Elddis Caravans (Consett) Ltd. reserves the right to alter
specifications, prices and model ranges as materials
and conditions demand and can accept no
responsibility for discrepancies between this information
and subsequent models.



FOR PEOPLE GOING PLACES

Elddis Caravans (Consett) Ltd, Delves Lane, Consett, Co. Durham DH8 7LG. Tel: (0207) 503477. Fax: (0207) 591018.