

Q U A L I T Y W I T H S T Y L E



SWIFT 

1 9 9 4 R A N G E

KEEP

DESIGNED TO LAST

FROM THE TIME THE VERY FIRST SWIFT MODEL WAS PRODUCED 29 YEARS AGO, INNOVATIVE DESIGN AND QUALITY OF CONSTRUCTION HAVE BEEN THE HALLMARK OF THE COMPANY.

TODAY, THE SWIFT GROUP IS ONE OF THE LEADING COMPANIES PRODUCING LEISURE VEHICLES IN EUROPE.

ALL SWIFT MODELS ARE BUILT TO STAND THE TEST OF TIME AND AN EXCELLENT RESALE VALUE IS TESTIMONY TO THEIR ONGOING POPULARITY OVER THE YEARS.

THE ULTRA MODERN 26 ACRE PRODUCTION COMPLEX AT COTTINGHAM IN EAST YORKSHIRE BRISTLES WITH ALL THE LATEST HIGH TECHNOLOGY DESIGN AND PRODUCTION EQUIPMENT AND IS ONE OF THE MOST SOPHISTICATED IN THE INDUSTRY.

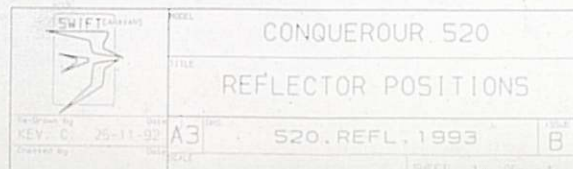
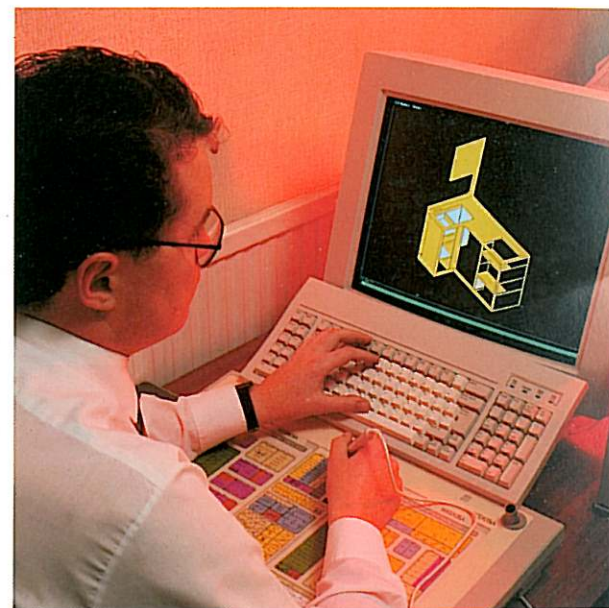
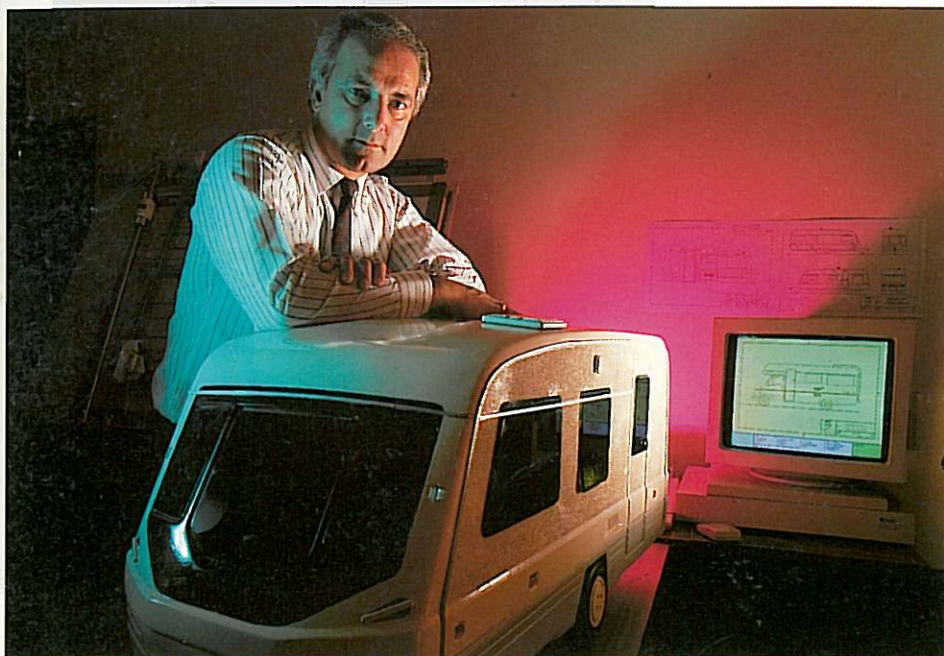
THE SWIFT DEVELOPMENT AND PRODUCTION PROCEDURES HAVE BEEN FORMULATED TO MEET THE EXACTING STANDARDS SET DOWN IN BS 5750 PART 1, AND ALL SECTIONS OF THE BUSINESS OPERATE USING THE SAME CENTRALLY GENERATED COMPUTERISED INFORMATION ENSURING TOTAL CO-ORDINATION AT ALL STAGES OF DESIGN AND PRODUCTION.

THIS HAS TRANSFORMED THE WAY THE MODERN CARAVAN IS CONCEIVED AND MANUFACTURED. STARTING AT THE DESIGN STAGE, A POWERFUL CAD (COMPUTER AIDED DESIGN) SYSTEM PRODUCES EVERYTHING FROM INITIAL CONCEPTS TO THE FINAL DRAWINGS FOR THE PRODUCTION LINES.

IT PROVIDES THE DESIGNERS WITH HUNDREDS OF OPTIONS, MANY IN THREE DIMENSIONS, ENABLING THEM TO PICTURE TOMORROW'S SWIFT MODELS WITHOUT A PANEL BEING BUILT. ONLY WHEN THE FINAL DETAILS HAVE BEEN CAREFULLY CHECKED AND APPROVED IS THE ACTUAL PROTOTYPE MODEL CONSTRUCTED.

THIS THEN UNDERGOES A SERIES OF RIGOROUS SPEED AND CONSTRUCTION TESTS TO PROVE THE SAFETY AND STABILITY OF THE NEW MODEL BEYOND DOUBT. SOME OF THESE TESTS ARE UNIQUE TO SWIFT, AS ARE MANY OF THE NEW MANUFACTURING PROCESSES.

TOGETHER THEY HELP THE COMPANY TO BUILD A BETTER CARAVAN.



QUALITY BUILT-IN

YEARS OF EXPERIENCE AND CRAFTSMANSHIP ARE BUILT INTO EVERY NEW SWIFT PRODUCT, EXPERIENCE THAT HAS GAINED THE COMPANY THE REPUTATION FOR MAKING THE BEST QUALITY TOURING CARAVANS IN EUROPE.

MANY OF THE COMPONENTS FOR THE CARAVANS ARE MANUFACTURED BY SWIFT GROUP COMPANIES ON THE COTTINGHAM COMPLEX TO PROVIDE MAXIMUM CONTROL OVER BOTH COMPLEMENTARY DESIGN AND THE QUALITY OF MANUFACTURING.

ALL THE FURNITURE, INCLUDING THE HARDWOOD FRAMED DOORS FEATURED IN MANY OF THE MODELS, IS MANUFACTURED TO PINPOINT ACCURACY ON THE LATEST COMPUTER NUMERICALLY CONTROLLED MACHINES, USING ONLY THE FINEST QUALITY TIMBER.

MANY OF THE GRP (GLASS REINFORCED PLASTIC) ITEMS, INCLUDING THE INDIVIDUALLY STYLED AERODYNAMIC ONE PIECE FRONTS AND REAR PANELS WITH INTEGRAL ROAD LIGHTS ARE MANUFACTURED BY THE GROUP'S OWN SPECIALIST PLASTICS COMPANY.

ALL THE PROPRIETARY ITEMS LIKE OVENS REFRIGERATORS, HEATERS AND ELECTRICAL

CONTROL SYSTEMS ARE CAREFULLY SOURCED FROM HOUSEHOLD NAME COMPANIES WHO ADOPT SIMILAR HIGH STANDARDS OF QUALITY CONTROL PROCEDURES. THESE COMPONENTS ARE ONLY FITTED TO SWIFT PRODUCTS AFTER THEY HAVE BEEN RIGOROUSLY TESTED IN SITU TO MAKE SURE THEY MEET OUR OWN HIGH STANDARDS.

THE GROUP'S NORTHMOOR PRODUCTION COMPLEX HAS BEEN DEVELOPED TO PROVIDE ONE OF THE MOST SOPHISTICATED MANUFACTURING FACILITIES IN THE INDUSTRY.

BY USING CENTRALLY GENERATED COMPUTERISED INFORMATION, AND THE LATEST SPECIALISED MACHINERY, THE FLOW LINE PRODUCTION FACILITIES ARE ABLE TO BUILD ONE OF THE WIDEST RANGES OF LEISURE VEHICLES IN EUROPE TO CONSISTENTLY HIGH STANDARDS OF QUALITY AND FINISH.

ADD THE UNIQUE SWIFT WORKFORCE, WHICH INCLUDES MANY CRAFTSMEN WHO HAVE WORKED ON GENERATIONS OF SUCCESSFUL SWIFT MODELS, AND WHOSE TRADITIONAL SKILLS HAVE NOW BEEN COMBINED WITH MODERN DAY TECHNOLOGY, AND YOU HAVE THE FINAL INGREDIENT IN THE SWIFT SUCCESS STORY.



THE INSIDE STORY

INSIDE EVERY SWIFT MODEL IS A STORY OF CRAFTSMANSHIP, ATTENTION TO DETAIL AND YEARS OF EXPERIENCE SUPPORTING THE COMPANY'S REPUTATION FOR BUILDING A BETTER TOURING CARAVAN.

MANY OF THE MORE IMPORTANT POINTS ARE HIDDEN FROM THE EYE. FLOORS THAT ARE 44MM THICK, WALLS 25MM THICK AND A ROOF 32MM THICK, PROVIDE SUPERIOR STRENGTH AND INSULATION.

ALL MODELS HAVE FRAMED FURNITURE DOORS AND MOST HAVE HARDWOOD FRAMES WITH STYLISH PROFILES FOR GOOD LOOKS AND LONG

LIFE. ALL MODELS, EXCEPT THE RAPIDE, FEATURE A UNIQUE NEW SOFT SHUT SEAL ON THE LOCKER DOORS FOR A QUIET CLOSING ACTION.

AND ALL THE FURNITURE IS FITTED USING THE UNIQUE SWIFT SYSTEM OF LOCATING THE FIXING SCREWS INTO STEEL PLATES THAT ARE BONDED INTO THE LAMINATED WALLS IN STRATEGIC POSITIONS, PROVIDING STRONG SECURE FIXING. FIXING STRONG ENOUGH TO STAND THE RIGOURS OF A TEST TRACK DESIGNED TO SHAKE 20 TON TRUCKS TO PIECES.

MANY MODELS HAVE SPECIAL VENTILATION BOARDS BEHIND THE SEAT RESTS. THIS FEATURE, TOGETHER WITH SLATTED BED BOX TOP

CONSTRUCTION, ELIMINATES CONDENSATION IN THESE HIGH RISK AREAS. AND FOR 1994, THE SLATTED BED BOX SUPPORTS OPERATE IN NEW SMOOTH ACTION RUNNERS.

THE LATEST LIGHT WEIGHT CHASSIS AND WIDE TRACK AL-KO EURO AXLE ENSURES OPTIMUM SAFETY AND PERFORMANCE ON THE ROAD.

OTHER SAFETY IMPROVEMENTS FOR 1994 INCLUDE A CENTRAL MANIFOLD GAS SYSTEM WITH INDIVIDUAL ISOLATION TAPS FOR EACH GAS APPLIANCE, INBOARD RIGID PLASTIC PLUMBING WITH DOMESTIC PUSH FIT CONNECTORS AND A PRESSURISED FRESH WATER SYSTEM.



MANY OF THE 1994 MODELS FEATURE A NEW MODULAR CONSOLE, WHICH HOUSES ALL THE MAIN ELECTRICAL CONTROLS, THE 12 VOLT FUSES, AND THE 240 VOLT RESIDUAL CIRCUIT BREAKERS. THIS IS UNIQUE TO SWIFT FOR 1994. ALL MODELS (EXCEPT RAPIDE) ALSO HAVE NEW INTERIOR ENTRY LIGHTS WITH A SWITCH IN THE DOORWAY.



ALL SWIFT MODELS MEET NATIONAL SAFETY STANDARDS AND ELECTRICAL POWER PACKS AND WIRING CONFORM TO INTERNATIONAL STANDARDS ISO 8818, MAKING THEM SUITABLE FOR USE THROUGHOUT EUROPE.



SAFETY AND STABILITY

THREE OF THE MOST IMPORTANT THINGS TO CONSIDER WHEN BUYING A CARAVAN ARE SAFETY, STABILITY AND SECURITY.

WHEN IT COMES TO SAFETY AND STABILITY, SWIFT HAVE A RECORD SECOND TO NONE. EVERY PROTOTYPE CARAVAN HAS TO UNDERGO RIGOROUS STABILITY TESTS CARRIED OUT AT SPEEDS OF UP TO 80 MPH, AND STRUCTURAL TESTS INVOLVING 25,000 MILES OF SIMULATED USE BEFORE THEY CAN GO INTO PRODUCTION.

ONE OF THE TESTS INCLUDES MONITORING THE NOSE WEIGHT WHILE THE CARAVAN IS ACTUALLY BEING TOWED, USING A UNIQUE PIECE OF EQUIPMENT WHICH HAS BEEN EXCLUSIVELY DEVELOPED FOR SWIFT.

SWIFT IS THE ONLY CARAVAN MANUFACTURER ABLE TO CHECK THE AERODYNAMICS AND TOWING STABILITY OF THEIR CARAVANS BY RECORDING THE NOSE WEIGHT IN EVERY POSSIBLE TOWING AND BRAKING SITUATION.

AND WHEN IT COMES TO SPEED, A STANDARD RAPIDE 380 HOLDS THE NATIONAL 24 HOUR SPEED RECORD, AT AN AVERAGE OF JUST OVER 97MPH FOR 24 HOURS, BEHIND A STANDARD VAUXHALL CARLTON. TRUE TESTAMENT TO THE SAFETY AND STABILITY OF THE SWIFT MARQUE.

THE WHEELS ON ALL SWIFT MODELS ARE FITTED WITH A DOUBLE HUMP SAFETY FEATURE TO REDUCE THE RISK OF THE TYRE LEAVING THE WHEEL RIM IN THE UNLIKELY EVENT OF A MOTORWAY BLOWOUT.



WHEN IT COMES TO SECURITY, ALL MODELS HAVE SECURITY NUMBERS ETCHED INTO EVERY WINDOW AND STAMPED INTO THE 'A' FRAME OF THE CHASSIS. THIS NUMBER IS RECORDED ON A CENTRAL COMPUTER SYSTEM FOR INSTANT OWNER IDENTIFICATION.



FOR EVEN MORE PEACE OF MIND A SOPHISTICATED INFRA RED ALARM SYSTEM IS OFFERED ON SOME OF THE HIGHER SPECIFICATION MODELS IN 1994, AND ALL MODELS HAVE A NEW HIGH SECURITY LOCK WITH A SINGLE KEY SYSTEM FOR ALL EXTERNAL DOORS.



MAIN FEATURES

Lightweight galvanised steel chassis
with Al-Ko Euro Axle

Front gas bottle & optional
spare wheel storage

Opening front window

Double glazing with
night latch ventilation

Mains electrics with one socket

20 metre mains hook up cable

12 volt socket

Awning light

Reversing lights

Exterior access battery box
(excluding battery)

Fluorescent lights

Front reflector & side markers

10amp switch mode
charger/transformer

Electrolux 60 litre fridge

3 burner enamel hob with FFD

High impact polycarbonate bowl drainer

Carver 1.8kw underfloor flued heater

Gas/Electric water heater

Fitted shower with vanity unit

Inboard rigid piped pressurised
fresh water system

Thefford cassette toilet

Free standing table

Pull out roller slatted bed

Moulded framed furniture doors

Exterior door window with blind

Lined velvet curtains

Two bolster cushions

Bolt on wheel trims

RAPIDE GXL



490 GXL

Technical Specifications

THE FIVE MODEL RAPIDE GXL RANGE
PROVIDES THE IDEAL STARTING POINT FOR
THE BEST IN STYLE AND VALUE FOR MONEY.

IT BRINGS THE RENOWNED SWIFT QUALITY
OF CONSTRUCTION AND STANDARD OF FINISH

WITHIN THE RANGE OF ANYONE LOOKING FOR
A NEW CARAVAN.

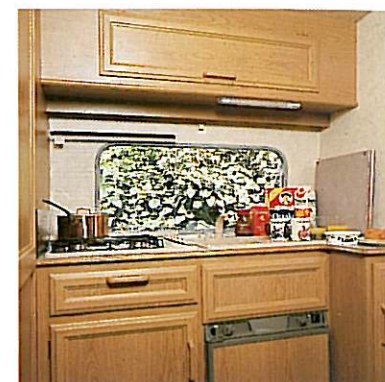
FOR 1994, THE RAPIDES GIVE YOU MORE
FOR LESS. THERE IS A NEW 470 MODEL AND
OUTSIDE, THE CRISP WHITE EXTERIOR HAS

STRIKING NEW BURGUNDY COACH MARKINGS
AND MATCHING INSERTS IN THE MOULDINGS.

INSIDE THE SPECIFICATION IS INCREASED
TO INCLUDE A LUXURY SHOWER ROOM, WATER
HEATER, CASSETTE TOILET, EXTERIOR ACCESS



All models



380 GXL



490 GXL



490 GXL

RAPIDE GXL	Internal Length (at bed box height)	Overall Width	Overall Height	Overall Length	Ex Works Weight +/- 5%	Maximum Authorised Weight	Caravan Allowable Pay Load
380	3.84m/12'7"	2.13m/7'0"	2.51m/8'3"	5.24m/17'2"	690kg/13.6cwt*	900kg/17.7cwt	210kg/4.1cwt*
440	4.51m/14'9"	2.13m/7'0"	2.51m/8'3"	5.90m/19'5"	770kg/15.1cwt*	1000kg/19.7cwt	230kg/4.6cwt*
450	4.51m/14'9"	2.13m/7'0"	2.51m/8'3"	5.90m/19'5"	800kg/15.7cwt*	1000kg/19.7cwt	200kg/4.0cwt*
470	4.67m/15'4"	2.13m/7'0"	2.51m/8'3"	6.06m/19'10"	835kg/16.4cwt*	1060kg/20.8cwt	225kg/4.4cwt*
490	4.90m/16'1"	2.13m/7'0"	2.51m/8'3"	6.30m/20'8"	850kg/16.7cwt*	1060kg/20.8cwt	210kg/4.1cwt*

* Estimated

IMPACT POLYCARBONATE BOWL AND DRAINER, WITH DOMESTIC STYLE MIXER TAP, AND EITHER A 70 LITRE, OR 77 LITRE FRIDGE WITH FULL WIDTH FREEZER COMPARTMENT, DEPENDING ON THE MODEL.

THE NEW HONEY OAK COLOURED FURNITURE FEATURES THE LATEST SOLID ASH FRAMED DOORS, WHILE THE ALL WHITE BATHROOMS HAVE A NEW VANITY UNIT WITH INTEGRAL TOOTH BRUSH HOLDER, TOILET

ROLL HOLDER AND TOWEL RAILS, TO COMPLEMENT THE FULLY FITTED SHOWER AND CASSETTE TOILET.

ALL THE OPENING WINDOWS HAVE FLYSCREENS, THERE IS A BLIND TO THE

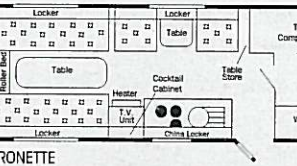
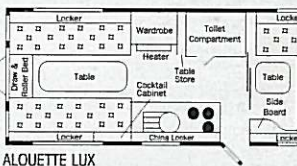
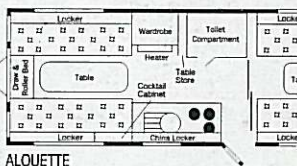
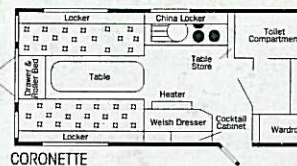
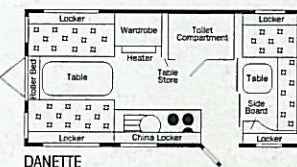
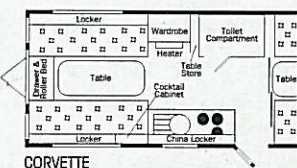
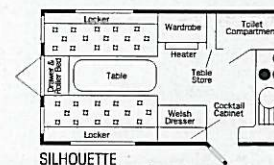
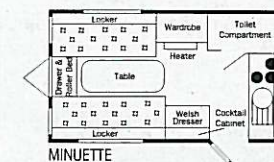
KITCHEN WINDOW, AND NEW STYLE TOP QUALITY SOFT FURNISHINGS, USING THE LATEST FABRICS COMPLETE THE SPECIFICATION OF THIS EVER POPULAR RANGE.



Alouette

SWIFT DIAMOND	Internal Length (at bed box height)	Overall Width	Overall Height	Overall Length	Ex Works Weight +/- 5%	Maximum Authorised Weight	Caravan Allowable Pay Load
CORONETTE	4.65m/15'3"	2.13m/7'0"	2.51m/8'3"	6.12m/20'1"	895kg/17.6cwt	1100kg/21.6cwt	205kg/4.0cwt
ALOUETTE	5.15m/16'11"	2.13m/7'0"	2.51m/8'3"	6.62m/21'9"	950kg/18.7cwt*	1200kg/23.6cwt	250kg/4.9cwt*
ALOUETTE LUX	5.15m/16'11"	2.13m/7'0"	2.51m/8'3"	6.62m/21'9"	965kg/19.0cwt	1200kg/23.6cwt	235kg/4.6cwt
BARONETTE	5.25m/17'3"	2.13m/7'0"	2.51m/8'3"	6.72m/22'0"	975kg/19.2cwt	1200kg/23.6cwt	225kg/4.4cwt

* Estimated



MAIN FEATURES

- Mains electrics with 3 sockets
- 20 metre mains hook up cable
- 12v socket
- TV aerial socket
- 12v and 240v reading lights
- Awning light
- Reversing lights
- Exterior access battery box (excluding battery)
- 10amp switch mode charger/transformer
- Electrolux 70 litre electronic ignition fridge
- Electrolux 77 litre electronic ignition fridge (360/520)
- Maxol 3000 spark ignition oven
- 4 burner spark ignition enamel hob with Flame Failure Device
- High impact polycarbonate bowl drainer
- Carver 3Kw heater (1.8Kw in 360)
- Blown air central heating
- Night blinds & flyscreens to all opening windows
- Gas/Electric water heater
- Fitted shower with vanity unit
- Inboard rigid piped pressurised fresh water system
- Electric flush cassette toilet
- Doormat tray with brush out facility
- Free standing table
- Drawer unit with occasional table (6'3" beds)
- Pull out roller slatted beds
- Dedicated table storage
- Quartz clock
- Roof lights with night blind & flyscreen
- Fitted cocktail cabinet (not 450)
- Hardwood framed furniture doors
- Exterior door window with blind
- Lined velvet curtains

CHALLENGER SE



470 SE

Technical Specifications

THE CHALLENGER 'SE' REMAINS BRITAIN'S MOST POPULAR RANGE OF TOURING CARAVANS, PROVIDING A UNIQUE BLEND OF MODERN STYLING, WIDE CHOICE OF LAYOUTS AND A HIGH LEVEL OF INTERNAL COMFORT.

THE 1994 CHALLENGERS HAVE A NEW ALL WHITE EXTERIOR, WITH BURGUNDY AND GREY METALLIC COACH MARKINGS. THE 510 HAS BEEN LENGTHENED AND RENAMED THE CHALLENGER 520.

NEW STYLE THICKER TOP QUALITY UPHOLSTERY AND HONEY OAK STYLE ASH FRAMED FURNITURE GIVES THE INTERIOR A MORE LUXURIOUS APPEAL. FULL NIGHT BLINDS AND FLYSCREENS ARE FITTED TO ALL



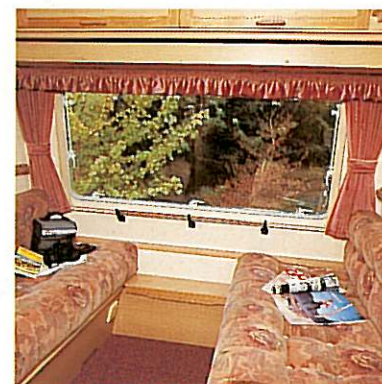
470 SE



470 SE



490 SE



490 SE

CHALLENGER SE	Internal Length (at bed box height)	Overall Width	Overall Height	Overall Length	Ex Works Weight +/- 5%	Maximum Authorised Weight	Caravan Allowable Pay Load
360	3.58m/11'10"	2.13m/7.0"	2.51m/8'3"	5.06m/16'7"	740kg/14.5cwt	900kg/17.7cwt	160kg/3.2cwt
400	4.22m/13'10"	2.13m/7.0"	2.51m/8'3"	5.69m/18'8"	830kg/16.3cwt	1060kg/20.8cwt	230kg/4.5cwt
440	4.62m/15'2"	2.13m/7.0"	2.51m/8'3"	6.10m/20'0"	910kg/17.9cwt	1150kg/22.6cwt	240kg/4.7cwt
450	4.59m/15'1"	2.13m/7.0"	2.51m/8'3"	6.07m/19'11"	910kg/17.9cwt*	1150kg/22.6cwt	240kg/4.7cwt*

* Estimated

MAIN FEATURES

- Mains electrics with 3 sockets
- 20 metre mains hook up cable
- 12v sockets
- TV aerial & booster
- Philips retractable stereo radio cassette
- 12v and 240v reading lights
- Awning light
- Reversing lights
- Exterior access battery box (excluding battery)
- 10amp switch mode charger/transformer
- Electrolux 70 litre electronic ignition fridge
- Green Stoves thermostatic spark ignition oven
- 4 burner spark ignition enamel hob
- Pull out extractor hood in kitchen
- High impact polycarbonate bowl drainer
- Carver 3Kw heater
- Blown air central heating
- Night blinds & flyscreens to all opening windows
- Gas/Electric water heater
- Fitted shower with vanity unit
- Electric flush cassette toilet
- Inboard rigid piped pressurised fresh water system
- Insulated fresh water tank
- Doormat tray with brush out facility
- Free standing table
- Drawer unit with occasional table
- Pull out roller slatted bed
- Quartz clock
- Spare wheel & tyre & Scissor jack
- Roof lights with night blind & flyscreen
- Hardwood framed furniture doors
- Exterior door window with blind
- Passive infra red security alarm

CORNICHE



15/2 E

Technical Specifications

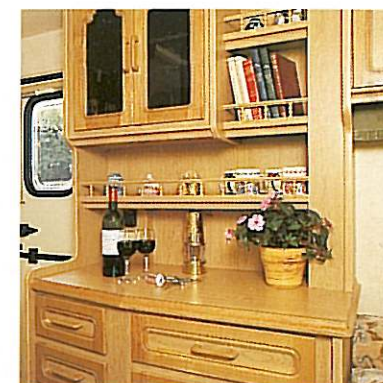
THE ALL NEW CORNICHE FEATURES A UNIQUE EXTERIOR SHAPE, WHICH THROUGH THE SKILLED USE OF GRP, SETS NEW STANDARDS IN EXTERIOR CARAVAN DESIGN, AND IS ARGUABLY ONE OF THE MOST

ATTRACTIVE SHAPES ANYWHERE IN EUROPE. OUTSIDE, THE TWO TONE WHITE AND FAWN EXTERIOR FEATURES GRP SKIRTS, ONE PIECE GRP FRONT AND REAR PANELS, AND A STYLED GRP ROOF, WITH INTEGRAL HIGH LEVEL REAR

TAIL LIGHTS. THE WINDOWS HAVE METALLIC GOLD FRAMES, AND THE GAS BOTTLE LOCKER FEATURES A UNIQUE CANTILEVER OPENING ACTION, WHICH REVEALS A DEDICATED STORAGE AREA FOR TWO 7KG CYLINDERS OR A



15/2 E



15/2 E



13/2



15/2 E

CORNICHE	Internal Length (at bed box height)	Overall Width	Overall Height	Overall Length	Ex Works Weight +/- 5%	Maximum Authorised Weight	Caravan Allowable Pay Load
13/2	3.99m/13'1"	2.13m/7'0"	2.71m/8'11"	5.58m/18'4"	880kg/17.3cwt	1100kg/21.6cwt	220kg/4.3cwt
15/2	4.65m/15'3"	2.13m/7'0"	2.71m/8'11"	6.25m/20'6"	995kg/19.6cwt	1250kg/24.6cwt	255kg/5.0cwt
15/2 E	4.65m/15'3"	2.13m/7'0"	2.71m/8'11"	6.25m/20'6"	990kg/19.5cwt	1250kg/24.6cwt	260kg/5.1cwt

OPENING WINDOWS.

ALL MODELS FEATURE TV SHELVES AND A NEW ELECTRICAL CONTROL CONSOLE, UNIQUE TO SWIFT, WHICH INCORPORATES THE ELECTRICAL CONTROLS FOR WATER HEATER,

ELECTRIC PUMP, FUSES FOR THE 12 VOLT

SYSTEM, RESIDUAL CIRCUIT BREAKERS FOR THE 240 VOLT MAINS SYSTEM, BATTERY LEVEL INDICATOR AND SWITCH MODE CHARGER/TRANSFORMER.

THE SHOWER ROOMS FEATURE THE NEW ALL

WHITE HIGH GLOSS FINISH WITH ADDITIONAL LOWER VANITORY STORAGE. THERE IS A DEDICATED CROCKERY STORAGE AREA IN THE KITCHEN AND THE 360 AND 520 MODELS

FEATURE THE LARGER 77 LITRE FRIDGE, WITH FULL WIDTH FREEZER COMPARTMENT.

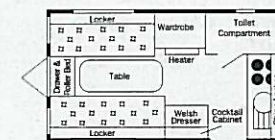
A GLANCE AT THE IMPRESSIVE LIST OF FEATURES SHOWS WHY THE CHALLENGERS ARE STILL LEADING THE PACK.



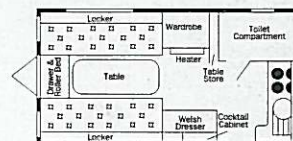
490 SE

CHALLENGER SE	Internal Length (at bed box height)	Overall Width	Overall Height	Overall Length	Ex Works Weight +/- 5%	Maximum Authorised Weight	Caravan Allowable Pay Load
470	4.65m/15'3"	2.13m/7.0"	2.51m/8'3"	6.13m/20'1"	910kg/17.9cwt	1150kg/22.6cwt	240kg/4.7cwt
490	5.15m/16'11"	2.13m/7.0"	2.51m/8'3"	6.62m/21'9"	995kg/19.6cwt	1250kg/24.6cwt	255kg/5.0cwt
490 LUX	5.15m/16'11"	2.13m/7.0"	2.51m/8'3"	6.62m/21'9"	995kg/19.6cwt	1250kg/24.6cwt	255kg/5.0cwt
520	5.25m/17'3"	2.13m/7.0"	2.51m/8'3"	6.72m/22'0"	1000kg/19.7cwt	1250kg/24.6cwt	250kg/4.9cwt

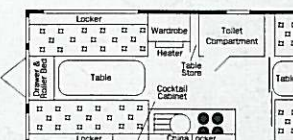
* Estimated



CHALLENGER 360



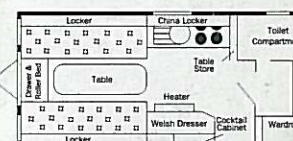
CHALLENGER 400



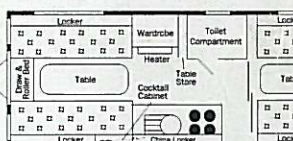
CHALLENGER 440



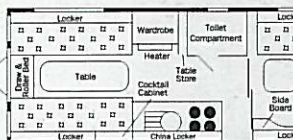
CHALLENGER 450



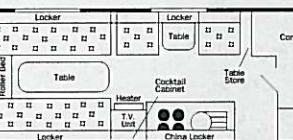
CHALLENGER 470



CHALLENGER 490



CHALLENGER 490 LUX



CHALLENGER 520

BATTERY BOX AND WINDOW IN THE DOOR
WITH BLIND AS STANDARD.

ALL '94 SWIFT MODELS HAVE RIGID
PLUMBING AND A PRESSURISED FRESH WATER
SYSTEM WITH WHALE WATERMASTER PUMP

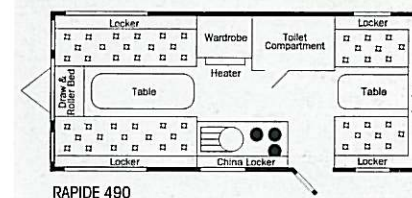
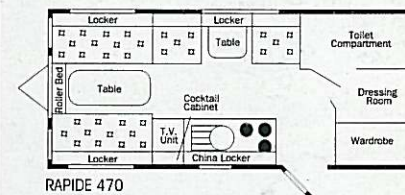
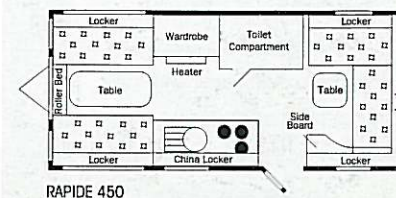
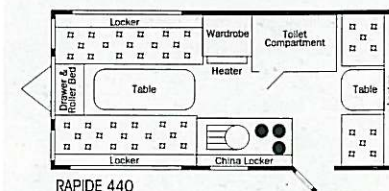
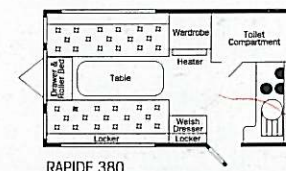
NEATLY INTEGRATED INTO THE BATTERY BOX
HOUSING.

THE RAPIDES HAVE THE NEW CENTRAL
MANIFOLD GAS SYSTEM, WITH INDIVIDUAL
ISOLATION TAPS FOR EACH APPLIANCE, AND

ALL EXTERIOR DOORS OPERATE USING A
SINGLE KEY HIGH SECURITY LOCK.

NEW WALL COVERINGS, HONEY OAK STYLE
FRAMED FURNITURE, TOP QUALITY SOFT
FURNISHINGS AND A KITCHEN WITH A HIGH

IMPACT POLYCARBONATE DRAINER AND BOWL
WITH MIXER TAP, GIVES THE RAPIDES THE
STYLE AND APPEAL OF MANY COMPETITOR'S
MORE EXPENSIVE MODELS.



MAIN FEATURES

- Mains electrics with 2 sockets
- 20 metre mains hook up cable
- 12v socket
- Aerial socket
- 12v reading lights
- Central electrical distribution console
- Awning light
- Single key high security lock on exterior doors
- Reversing lights
- Front reflector & side markers
- Exterior access battery box (excluding battery)
- 10amp switch mode charger/transformer
- Electrolux 70 litre fridge (77 litre Minulette/Baronette)
- 3 burner enamel hob with FFD
- High impact polycarbonate bowl drainer
- Carver 1.8kw underfloor flued heater
- Full flyscreens to opening windows
- Gas/Electric water heater
- Fitted shower with vanity unit
- Inboard rigid piped pressurised fresh water system
- Thetford cassette toilet
- Free standing table
- Drawer unit with occasional table (6'3" bed)
- Pull out roller slatted bed
- Dedicated Table storage
- Quartz clock
- Roof lights with night blind & flyscreen
- Fitted cocktail cabinet (not Danette)
- Hardwood framed furniture doors
- Exterior door window with blind
- Lined velvet curtains
- Two bolster & scatter cushions (6'3" beds)

SWIFT DIAMOND



Alouette

Technical Specifications

THE SWIFT DIAMOND RANGE OFFERS A LAYOUT AND A SIZE TO SUIT EVERY CONCEIVABLE TASTE, AND NEW FOR 1994 IS THE TOP OF THE RANGE BARONETTE MODEL. OUTSIDE THE CRISP WHITE EXTERIOR WITH

GREY/GREEN METALLIC PRE-PAINTED COACH MARKINGS AND NEW FIVE SPOKE WHITE BOLT ON WHEEL TRIMS, GIVES THE RANGE A STRIKING NEW APPEARANCE.

THE ALOUETTE IS NOW AVAILABLE IN TWO

LAYOUTS, WITH EITHER L SHAPED OR CONVENTIONAL REAR DINETTES.

INSIDE THE VALUE FOR MONEY SPECIFICATION GETS EVEN BETTER.

THE KITCHEN HAS A NEW STYLE HIGH



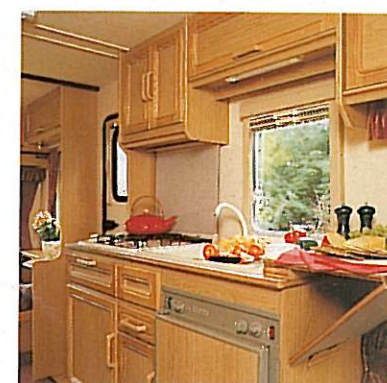
All models



Alouette Lux



Corvette



Alouette

SWIFT DIAMOND	Internal Length (at bed box height)	Overall Width	Overall Height	Overall Length	Ex Works Weight +/- 5%	Maximum Authorised Weight	Caravan Allowable Pay Load
MINUETTE	3.58m/11'10"	2.13m/7'0"	2.51m/8'3"	5.06m/16'7"	715kg/14.1cwt*	900kg/17.7cwt	185kg/3.6cwt*
SILHOUETTE	4.22m/13'10"	2.13m/7'0"	2.51m/8'3"	5.69m/18'8"	790kg/15.5cwt	1000kg/19.7cwt	210kg/4.1cwt
CORVETTE	4.62m/15'2"	2.13m/7'0"	2.51m/8'3"	6.10m/20'0"	860kg/16.9cwt*	1060kg/20.8cwt	200kg/3.9cwt*
DANETTE	4.59m/15'1"	2.13m/7'0"	2.51m/8'3"	6.07m/19'11"	840kg/16.5cwt*	1060kg/20.8cwt	220kg/4.3cwt*

* Estimated

13KG AND 7KG CYLINDER, AND ALSO FOR THE JACK, WHEEL BRACE AND SPARE WHEEL.

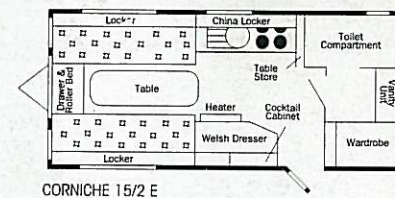
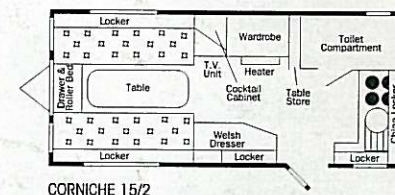
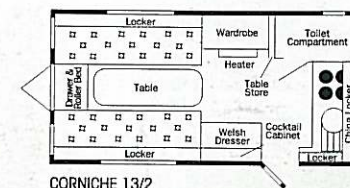
INSIDE THE CORNICHEs ARE PURE LUXURY. THE KITCHEN FEATURES MATCHING DOMESTIC STANDARD FOUR BURNER HOB AND GLASS

FRONTED OVEN IN DARK GREEN ENAMEL FINISH WITH BRASS DOOR HANDLES, UNIQUE TO SWIFT.

THE FRESH WATER SYSTEM IS FED FROM AN UNDER-SLUNG INSULATED WATER TANK.

THE UPHOLSTERY IS DOMESTIC QUALITY SETTEE STYLE, AND THE 15/2E FEATURES A SEPARATE SHOWER WITH CASSETTE TOILET, AND A VANITORY UNIT WITH WASH HAND BASIN IN THE CHANGING AREA.

THIS MOST LUXURIOUS OF ALL THE SWIFTS EVEN HAS A DIGITAL RADIO CASSETTE PLAYER AND IS PROTECTED BY A UNIQUE KEY PAD OPERATED PASSIVE INFRA RED ALARM SYSTEM.



MAIN FEATURES

- Mains electrics with 3 sockets
- 20 metre mains hook up cable
- 12v sockets (2 in 640)
- Aerial socket (2 in 640)
- TV aerial & booster (not 520)
- 12v and 240v reading lights
- Awning light
- Reversing lights
- Exterior access battery box (excluding battery)
- 10amp switch mode charger/transformer
- Electrolux 70 litre electric ignition fridge (77 litre in 520)
- Stoves thermostatic spark ignition oven
- 4 burner spark ignition enamel FFD hob
- High impact polycarbonate bowl drainer
- Carver 3Kw heater (5Kw in 640)
- Blown air central heating
- Night blinds & flyscreens to all opening windows
- Gas/Electric water heater
- Fitted shower with sanitary unit
- Inboard rigid piped pressurised fresh water system
- Inboard fresh water tank (not 520)
- Electric flush cassette toilet
- Doormat tray with brush out facility
- Free standing table
- Drawer unit with occasional table
- Pull out roller slatted beds
- Dedicated table storage
- Quartz clock
- Spare wheel, tyre & scissor jack (not 520)
- Roof lights with night blind & flyscreen
- Fitted cocktail cabinet
- Hardwood framed furniture doors
- Exterior door window with blind
- Passive infra red security alarm system (not 520)

CONQUEROR



FOR SIZE, STYLE AND COMFORT, THE THREE MODEL CONQUEROR RANGE OFFERS THE ULTIMATE TOURING EXPERIENCE. WITH ONE SINGLE AXLE AND TWO TWIN AXLE MODELS, THE CONQUERORS PROVIDE A CHOICE OF LAYOUTS

THAT INCLUDE ONE OF EUROPE'S MOST POPULAR CONFIGURATIONS IN THE 520, AND ONE OF THE MOST SPACIOUS ERGONOMIC KITCHENS TO BE FOUND IN A TOURING CARAVAN IN THE 550 LUX AND 640 SALON MODELS.

FOR 1994, THESE KITCHENS FEATURE THE EYE CATCHING AND HIGHLY PRACTICAL STOVES THERMOSTATIC ELECTRONIC IGNITION OVEN, WITH IT'S DARK GREEN ENAMEL FINISH AND BRASS STYLE HANDLES, AND MATCHING 4



640 Salon



All models



640 Salon



520 Lux

Technical Specifications

CONQUEROR	Internal Length (at bed box height)	Overall Width	Overall Height	Overall Length	Ex Works Weight +/- 5%	Maximum Authorised Weight	Caravan Allowable Pay Load
520 LUX	5.25m/17'3"	2.22m/7'3"	2.71m/8'11"	6.73m/22'1"	1010kg/19.9cwt	1250kg/24.6cwt	240kg/4.7cwt
550 LUX	5.50m/18'0"	2.22m/7'3"	2.71m/8'11"	6.97m/22'10"	1135kg/22.3cwt	1400kg/27.5cwt	265kg/5.2cwt
640 SALON	6.35m/20'10"	2.22m/7'3"	2.71m/8'11"	7.84m/25'8"	1275kg/25.0cwt	1600kg/31.4cwt	325kg/6.4cwt

BURNER SPARK IGNITION HOB WITH FFD.

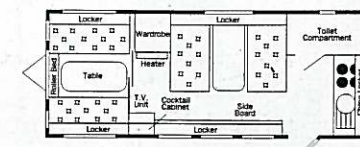
ALSO UNIQUE TO SWIFT FOR 1994 IS THE LATEST HIGH TECH MODULAR ELECTRICAL DISTRIBUTION PANEL. THIS HOUSES WATER HEATER CONTROLS, WATER PUMP SWITCH,

WATER TANK LEVEL INDICATOR (NOT 520), BATTERY CONDITION, CHANGEOVER AND CHARGER CONTROLS, 12 VOLT FUSES, RCB'S FOR THE 240 VOLT SYSTEM, AND KEY PAD FOR THE PASSIVE INFRA RED ALARM SYSTEM (NOT

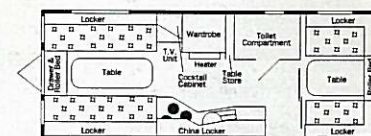
520), WHICH HAS EXTERIOR DOOR SENSORS AND AN INTERIOR INFRA RED BEAM.

WITH AN ALL WHITE EXTERIOR, METALLIC GREY COACH MARKINGS AND AN INTERIOR SPECIFICATION THAT INCLUDES EVERY

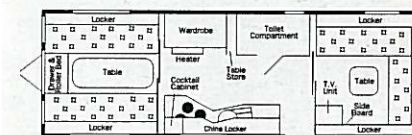
CONCEIVABLE HOME COMFORT, THE CONQUERORS PROVIDE YEAR ROUND CARAVANNING IN THE GRANDEST OF STYLE.



CONQUEROR 520 LUX



CONQUEROR 550 LUX



CONQUEROR 640 SALON

S P E C I F I C A T I O N S & F E A T U R E S

	RAPIDE	SWIFT DIAMOND	CHALLENGER	CORNICHE	CONQUEROR
Mains electrics with sockets	1	2	3	3	3
12v sockets (2 in Conqueror 640)	1	1	1	1	1
Aerial socket (2 in Conqueror 640)		1	1	1	1
TV aerial and booster (not Conqueror 520)				*	*
Philips retractable stereo radio cassette player				*	
240v reading lights			*	*	*
12v directional reading lights		*	*	*	*
Fluorescent lights	*	*	*	*	*
Awning light	*	*	*	*	*
Side repeater flashers		*	*	*	*
Reversing lights	*	*	*	*	*
Front reflector and side markers	*	*	*	*	*
Exterior access battery box (excluding battery)	*	*	*	*	*
10amp charger/transformer (switch mode)	*	*	*	*	*
Electrolux 60 litre fridge	*				
Electrolux 70 litre piezo ignition fridge		*			
Electrolux 70 litre electric ignition fridge			*	*	*
Electrolux 77 litre piezo ignition fridge with full width freezer complt.		MIN/BAR			
Electrolux 77 litre electric ignition fridge with full width freezer complt.			360/520		520
Maxol 3000 oven	OPT	OPT	*		
Stoves thermostatic spark ignition oven				*	*
3 burner enamel hob	*	*			
4 burner spark ignition enamel hob		OPT	*	*	*
High impact polycarbonate bowl drainer	*	*	*	*	*
Carver 1.8kw heater	*	*	360		
Carver 3kw heater (not Challenger 360)			*	*	*
Carver 5kw heater					640

	RAPIDE	SWIFT DIAMOND	CHALLENGER	CORNICHE	CONQUEROR
Blown air central heating			*	*	*
Flyscreens to opening windows		*			
Night blinds and flyscreens to all opening windows	OPT	OPT	*	*	*
Double glazing with night latch ventilation	*	*	*	*	*
Dual powered water heater	*	*	*	*	*
Vanitory unit with lower storage and shower tray		*	*	*	*
Fitted shower and vanitory unit	*	*	*	*	*
Inboard rigid piped pressurised fresh water system	*	*	*	*	*
Inboard or underslung fresh water tank (not Conqueror 520)				*	*
Manual flush cassette toilet	*	*			
Electric flush cassette toilet			*	*	*
Doormat tray with brush out facility			*	*	*
Free standing table	*	*	*	*	*
Drawer unit with occasional table (6'3" beds only)		*	*	*	*
Pull out roller slatted bed	*	*	*	*	*
Table store locker (excluding Minulette, Chall 360, Conq 520)		*	*	*	*
Quartz clock		*	*	*	*
Spare wheel and tyre (not Conqueror 520)				*	*
Scissor jack (not Conqueror 520)				*	*
Roof lights with night blind and flyscreen		*	*	*	*
Hardwood frame furniture doors		*	*	*	*
Moulded frame furniture doors	*				
Exterior door with window and window blind	*	*	*	*	*
Towel storage facility		*	*	*	*
Three opening front windows	OPT	*	*	*	*
Lined velvet curtains	*	*	*	*	*
Key pad operated passive infra red alarm system (not 520)		OPT	OPT	*	*
Single key operation high security locks to all doors	*	*	*	*	*

* - Standard fitment.
OPT - Available as factory fitted option



Refrigerator



China locker



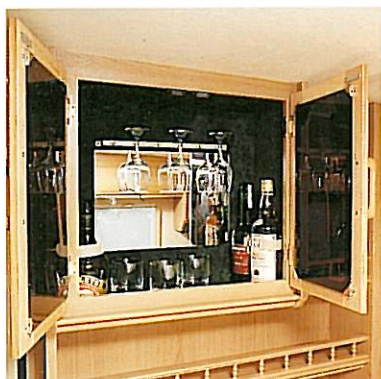
Oven



Occasional table



Exterior door flyscreen (Corniche & Conqueror only)



Cocktail cabinet



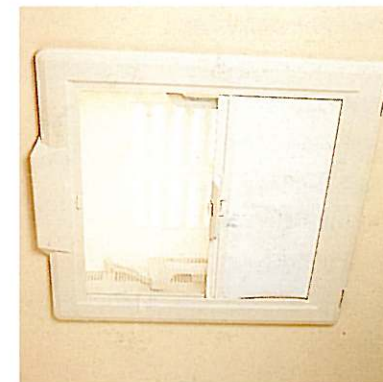
Quartz clock



Ducted blown air heater



Seat back ventilation



Roof light with night blind and flyscreen



Blinds and flyscreens



Slatted beds and bed box tops



Soft shut locker action



Mains, 12v and T.V. Co-axial sockets



Exterior access battery box
(Excluding battery & water container)

S P E C I F I C A T I O N S & F E A T U R E S

MODEL	AWNING SIZES (GROUND TO GROUND)	TYRE SIZES	BED SIZES
Rapide 380	8.00m/26'3"	165 R 13	RAPIDE 380: 2 Berth: Front double 201cm x 152cm (6'7"x5'0") or singles 191cm x 69cm (6'3"x2'3")
Rapide 440	8.66m/28'5"	165 R 13 Reinforced	RAPIDE 440: 2-4 Berth: Front double 201cm x 152cm (6'7"x5'0") or singles 191cm x 69cm (6'3"x2'3"), single 201cm x 76cm (6'7"x2'6"), bunk 201cm x 69cm (6'7"x2'3")
Rapide 450	8.66m/28'5"	165 R 13 Reinforced	RAPIDE 450: 2-5 Berth: Front double 201cm x 135cm (6'7"x4'5"), rear double 183cm x 116cm (6'0"x3'9"), bunk 201cm x 69cm (6'7"x2'3")
Rapide 470	8.82m/28'11"	165 R 13 Reinforced	RAPIDE 470: 2-4 Berth: Front double 201cm x 135cm (6'7"x4'5"), single 180cm x 60cm (5'11"x2'0"), bunk 180cm x 60cm (5'11"x2'0")
Rapide 490	9.06m/29'9"	165 R 13 Reinforced	RAPIDE 490: 2-5 Berth: Front double 201cm x 152cm (6'7"x5'0") or singles 191cm x 69cm (6'3"x2'3"), rear double 201cm x 116cm (6'7"x3'9"), bunk 201cm x 69cm (6'7"x2'3")
Swift Diamond Minulette	7.60m/24'11"	165 R 13	SWIFT DIAMOND MINULETTE: 2 Berth: Front double 201cm x 142cm (6'7"x4'8") or singles 191cm x 69cm (6'3"x2'3") and 183cm x 69cm (6'0"x2'3")
Swift Diamond Silhouette	8.23m/27'1"	165 R 13 Reinforced	SWIFT DIAMOND SILHOUETTE: 2 Berth: Front double 201cm x 152cm (6'7"x5'0") or singles 191cm x 69cm (6'3"x2'3")
Swift Diamond Corvette	8.65m/28'5"	165 R 13 Reinforced	SWIFT DIAMOND CORVETTE: 2-4 Berth: Front double 201cm x 152cm (6'7"x5'0") or singles 191cm x 69cm (6'3"x2'3") and 201cm x 76cm (6'7"x2'6"), bunk 201cm x 69cm (6'7"x2'3")
Swift Diamond Danette	8.60m/28'3"	165 R 13 Reinforced	SWIFT DIAMOND DANETTE: 2-5 Berth: Front double 201cm x 135cm (6'7"x4'5"), rear double 183cm x 116cm (6'0"x3'9") or single 183cm x 69cm (6'0"x2'3"), bunk 201cm x 69cm (6'7"x2'3")
Swift Diamond Coronette	8.66m/28'5"	175 R 13 Reinforced	SWIFT DIAMOND CORONETTE: 2 Berth: Front double 201cm x 152cm (6'7"x5'0") or singles 191cm x 69cm (6'3"x2'3")
Swift Diamond Alouette	9.16m/30'0"	175 R 13 6 Ply	SWIFT DIAMOND ALOUETTE: 2-5 Berth: Front double 201cm x 152cm (6'7"x5'0") or singles 191cm x 69cm (6'3"x2'3"), rear double 201cm x 116cm (6'7"x3'9"), bunk 201cm x 69cm (6'7"x2'3")
Swift Diamond Alouette Lux	9.16m/30'0"	175 R 13 6 Ply	SWIFT DIAMOND ALOUETTE LUX: 2-5 Berth: Front double 201cm x 152cm (6'7"x5'0") or singles 191cm x 69cm (6'3"x2'3"), rear double 201cm x 116cm (6'7"x3'9"), bunk 201cm x 69cm (6'7"x2'3")
Swift Diamond Baronette	9.27m/30'5"	175 R 13 6 Ply	SWIFT DIAMOND BARONETTE: 2-4 Berth: Front double 201cm x 142cm (6'7"x4'8") or singles 191cm x 69cm (6'3"x2'3") and 183cm x 69cm (6'0"x2'3")
Challenger 360	7.60m/24'11"	165 R 13	CHALLENGER 360: 2 Berth: Front double 197cm x 142cm (6'5"x4'8") or singles 191cm x 67cm (6'3"x2'2") and 183cm x 67cm (6'0"x2'2")
Challenger 400	8.23m/27'1"	165 R 13 Reinforced	CHALLENGER 400: 2 Berth: Front double 197cm x 152cm (6'5"x5'0") or singles 191cm x 67cm (6'3"x2'2")
Challenger 440	8.65m/28'5"	175 R 13 Reinforced	CHALLENGER 440: 2-4 Berth: Front double 197cm x 152cm (6'5"x5'0") or singles 191cm x 67cm (6'3"x2'2") and 197cm x 76cm (6'5"x2'6"), bunk 201cm x 69cm (6'7"x2'3")
Challenger 450	8.60m/28'3"	175 R 13 Reinforced	CHALLENGER 450: 2-5 Berth: Front double 197cm x 135cm (6'5"x4'5"), rear double 180cm x 116cm (5'11"x3'9") or single 180cm x 69cm (5'11"x2'3"), bunk 201cm x 69cm (6'7"x2'3")
Challenger 470	8.66m/28'5"	175 R 13 Reinforced	CHALLENGER 470: 2 Berth: Front double 197cm x 152cm (6'5"x5'0") or singles 191cm x 67cm (6'3"x2'2")
Challenger 490	9.16m/30'0"	175R 13 6 Ply	CHALLENGER 490: 2-5 Berth: Front double 197cm x 152cm (6'5"x5'0") or singles 191cm x 67cm (6'3"x2'2")
Challenger 490 Lux	9.16m/30'0"	175R 13 6 Ply	CHALLENGER 490 LUX: 2-5 Berth: Front double 197cm x 152cm (6'5"x5'0") or singles 191cm x 67cm (6'3"x2'2"), rear double 180cm x 116cm (5'11"x3'9") or single 180cm x 69cm (5'11"x2'3"), bunk 201cm x 69cm (6'7"x2'3")
Challenger 520	9.27m/30'5"	175R 13 6 Ply	CHALLENGER 520: 2-4 Berth: Front double 197cm x 142cm (6'5"x4'8") or singles 191cm x 67cm (6'3"x2'2"), 183cm x 67cm (6'0"x2'2"), rear single 180cm x 60cm (5'11"x2'0"), bunk 180cm x 60cm (5'11"x2'0")
Corniche 13/2	7.96m/26'1"	175 R 13 Reinforced	CORNICHE 13/2: 2 Berth: Front double 197cm x 152cm (6'5"x5'0") or singles 191cm x 67cm (6'3"x2'2")
Corniche 15/2	8.62m/28'3"	175R 13 6 Ply	CORNICHE 15/2: 2 Berth: Front double 197cm x 152cm (6'5"x5'0") or singles 191cm x 67cm (6'3"x2'2")
Corniche 15/2 E	8.62m/28'3"	175R 13 6 Ply	CORNICHE 15/2 E: 2 Berth: Front double 197cm x 152cm (6'5"x5'0") or singles 191cm x 67cm (6'3"x2'2")
Conqueror 520 Lux	9.27m/30'5"	175R 13 6 Ply	CONQUEROR 520 LUX: 2-4 Berth: Front double 206cm x 135cm (6'9"x4'11"), rear double 190cm x 135cm (6'2"x4'11")
Conqueror 550 Lux	9.52m/31'3"	155 R 13	CONQUEROR 550 LUX: 2-5 Berth: Front double 206cm x 152cm (6'9"x4'11") or singles 191cm x 67cm (6'3"x2'2"), rear double 206cm x 116cm (6'9"x3'9"), bunk 210cm x 69cm (6'10"x2'3")
Conqueror 640 Salon	10.37m/34'0"	155 R 13	CONQUEROR 640 SALON: 2-4 Berth: Front double 206cm x 152cm (6'9"x4'11") or singles 191cm x 67cm (6'3"x2'2"), rear double 191cm x 140cm (6'3"x4'7") or single 191cm x 68cm (6'3"x2'3")

CUSTOMER

CARE

ACCESSORIES LTD

ASH DOORS

THE BEST PRODUCTS DESERVE THE BEST DEALERS AND THE BEST AFTER SALES CARE. SWIFT'S NATIONWIDE DEALERS ARE ALL CAREFULLY CHOSEN TO ENSURE THE STANDARD OF QUALITY BUILT INTO EACH CARAVAN IS MATCHED BY THE STANDARD OF ALL ROUND SERVICE THEY PROVIDE.

AT SWIFT, WE ALSO AIM TO PROVIDE THE BEST CUSTOMER CARE SERVICE IN THE INDUSTRY. A HAND PICKED TEAM OF SPECIALISTS SUPPORTED BY THE LATEST COMPUTER TECHNOLOGY CONTROL A HEAD OFFICE CUSTOMER CARE OPERATION DESIGNED TO SUPPORT SWIFT DEALERS AND SWIFT OWNERS NATIONWIDE, WITH COMPREHENSIVE HELP AND ADVICE ON ALL GROUP

PRODUCTS.

THE AFTER SALES OPERATION IS ONE OF THE LARGEST IN EUROPE. BASED IN A PURPOSE BUILT WAREHOUSE ADJACENT TO THE NORTH MOOR PRODUCTION COMPLEX, IT USES A SOPHISTICATED COMPUTERISED STOCK CONTROL SYSTEM TO RECORD THE THOUSANDS OF SPARE PARTS HELD ON STOCK TO SERVICE AND REPAIR ALL SWIFT MODELS.

AFTER SALES DELIVERY VEHICLES, WITH SPECIAL DEMOUNTABLE BODIES, PROVIDE A YEAR ROUND SUPPLY OF THOSE VITAL SPARE PARTS TO THE DEALER NETWORK, ON A WEEKLY BASIS. AND WITH DEALER WORKSHOP STAFF ATTENDING REGULAR SERVICE COURSES AT THE COMPANY'S TRAINING CENTRE,

EVERY SWIFT CUSTOMER CAN REST ASSURED THAT THEY ARE RECEIVING THE MOST PROFESSIONAL HELP AVAILABLE.

FACTORY TOURS

AT SWIFT WE DO NOT JUST TALK ABOUT BUILDING BETTER CARAVANS, WE INVITE ANYONE OWNING OR CONSIDERING BUYING ONE OF OUR PRODUCTS TO COME AND SEE ONE OF EUROPE'S MOST SOPHISTICATED CARAVAN PRODUCTION PLANTS IN OPERATION FOR THEMSELVES.

WE HAVE THE CONFIDENCE IN OUR PRODUCTS TO OPERATE THE INDUSTRY'S ONLY FORMAL FACTORY TOUR PROGRAMME. ON CERTAIN DAYS FROM APRIL TO SEPTEMBER, YOU ARE WELCOME TO COME BY APPOINTMENT AND HAVE A GUIDED TOUR OF THE FACTORY TO SEE THE CARE WITH WHICH WE BUILD OUR CARAVANS.

TO EXPERIENCE THE SWIFT QUALITY OF BUILD PERSONALLY, PLEASE CONTACT OUR MARKETING SERVICES TEAM ON THE NUMBER SHOWN AT THE BACK OF THIS BROCHURE. BOOKING IS ESSENTIAL, AS ALL PLACES ARE PRE-ALLOCATED, AND A SMALL CHARGE IS MADE.



NO ONE ELSE OFFERS YOU THIS UNIQUE OPPORTUNITY. WE ARE CONFIDENT THAT BY THE END OF THE TOUR YOU WILL NOT ONLY HAVE SEEN HOW SWIFT BUILD A BETTER CARAVAN, BUT YOU WILL ALSO BE CONVINCED THAT IN OWNING A SWIFT, YOU ARE INVESTING IN A UNIQUE BLEND OF QUALITY AND STYLE.



ITEM No.	DESCRIPTION	PART No.	ITEM No.
A	OAK CURBOARD HANDLE	9302070	P TURN
B	OAK CURBOARD HANDLE	9302021	Q TURN
C	SLIDING DOOR HANDLE - LONG REACH	9302022	R SHUT
D	TOILET DOOR CATCH - OAK		
E	WARDROBE DOOR CATCH		
F	SAR...		



Your Swift Dealer



Swift Group Limited, Dunswell Road, Cottingham, North Humberside, HU16 4JX
Tel: 0482 847332. Fax: 0482 841042

All caravans are manufactured for towing behind normal road cars and are not suitable for towing behind commercial vehicles other than passenger car derivatives. If in doubt, please consult Swift Caravans. This brochure does not constitute an offer by the Company. The Swift Group Limited (Swift) reserve the right to alter specifications and prices as materials and conditions demand. Distributors and dealers sell Swift products on their own account and not as agents of Swift. Accordingly, they have no authority to bind Swift or to make any representation or undertaking whatsoever on behalf of Swift. The caravans in this brochure conform to the British Standards for Touring Caravans: BS4626 and BS6765. Cars courtesy of Vauxhall. Props supplied by Hammonds.